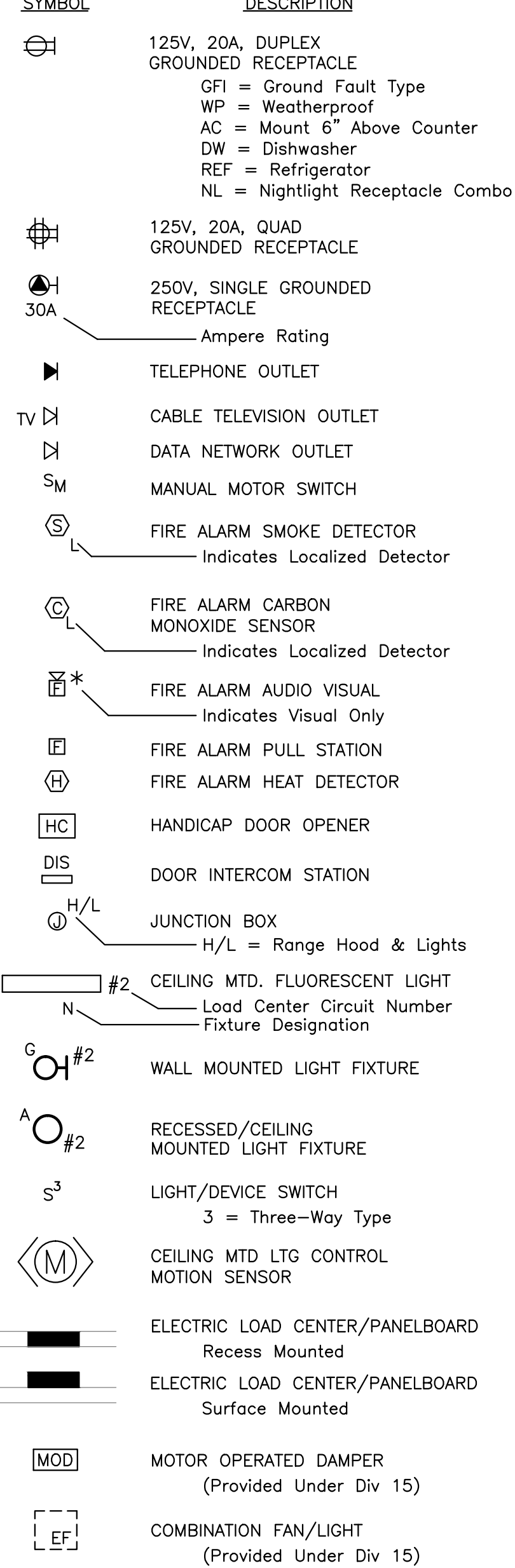
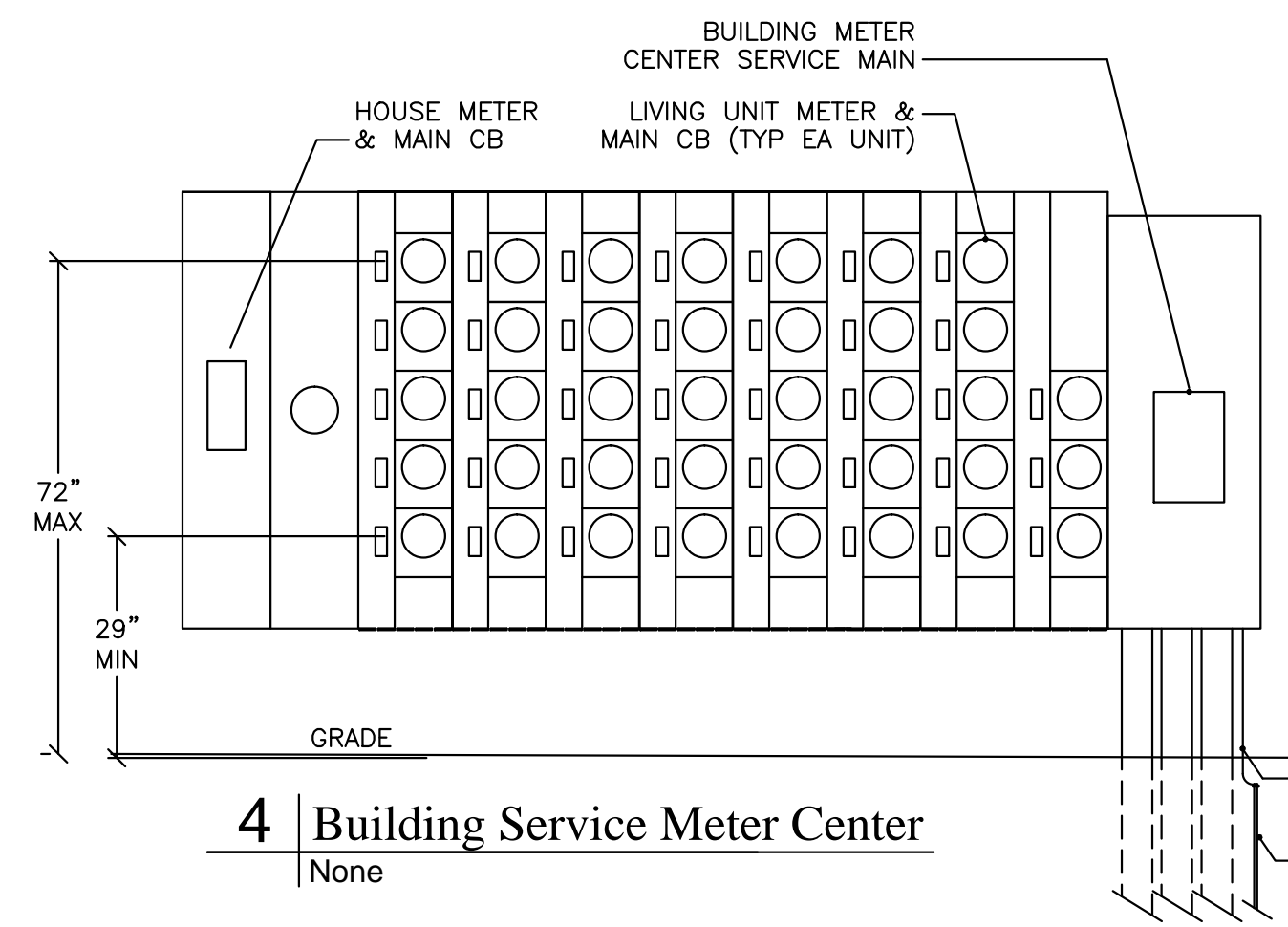
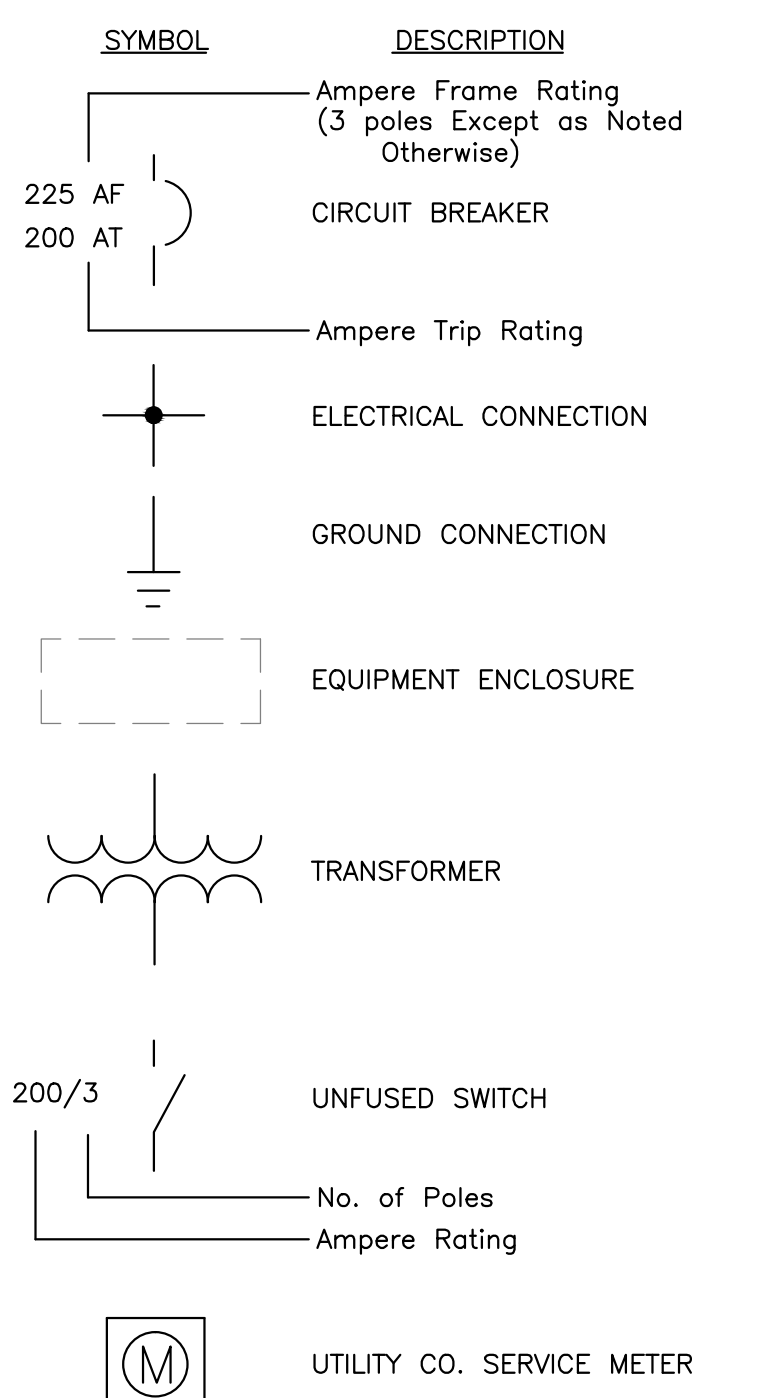


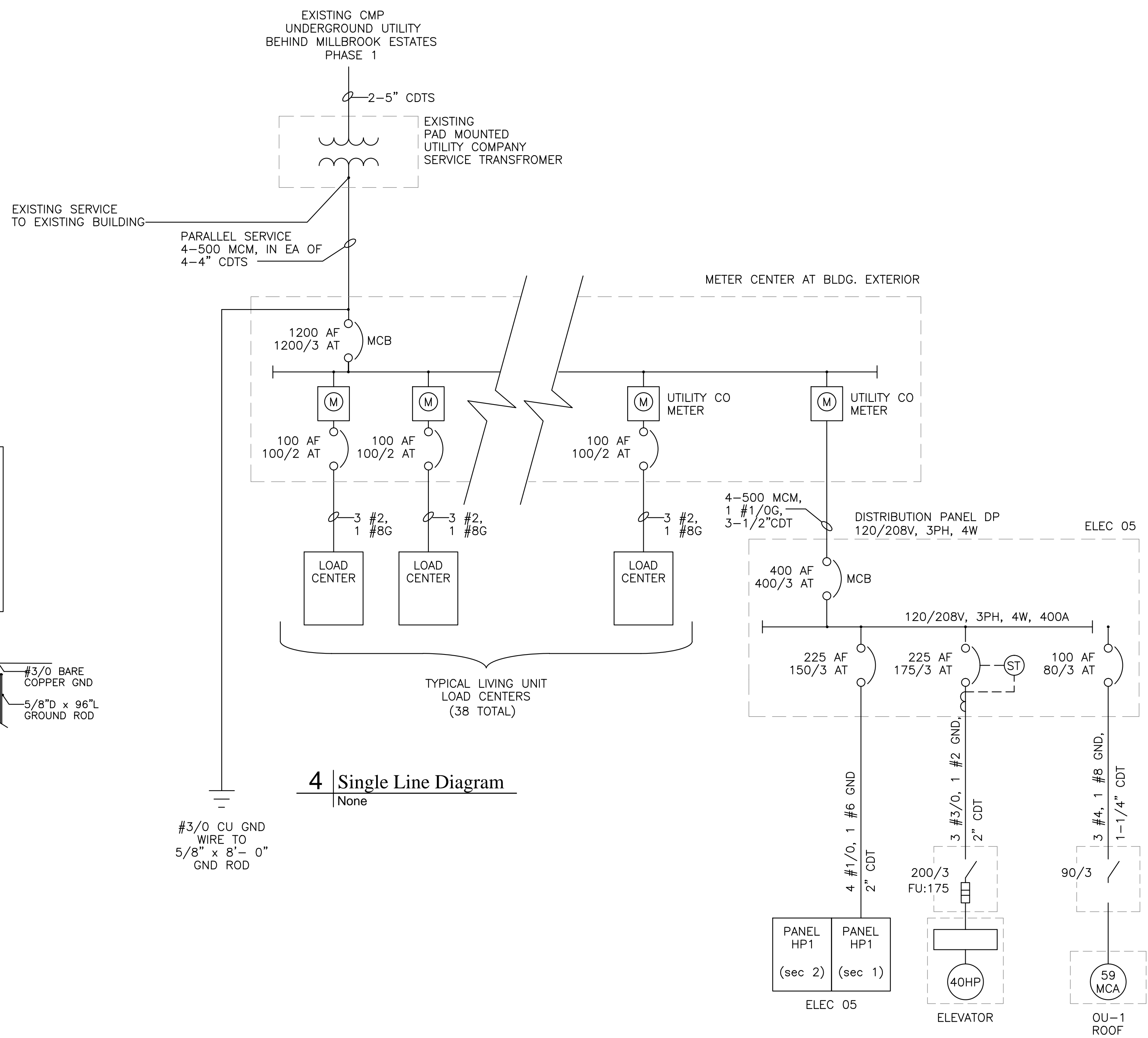
PLAN SYMBOLS



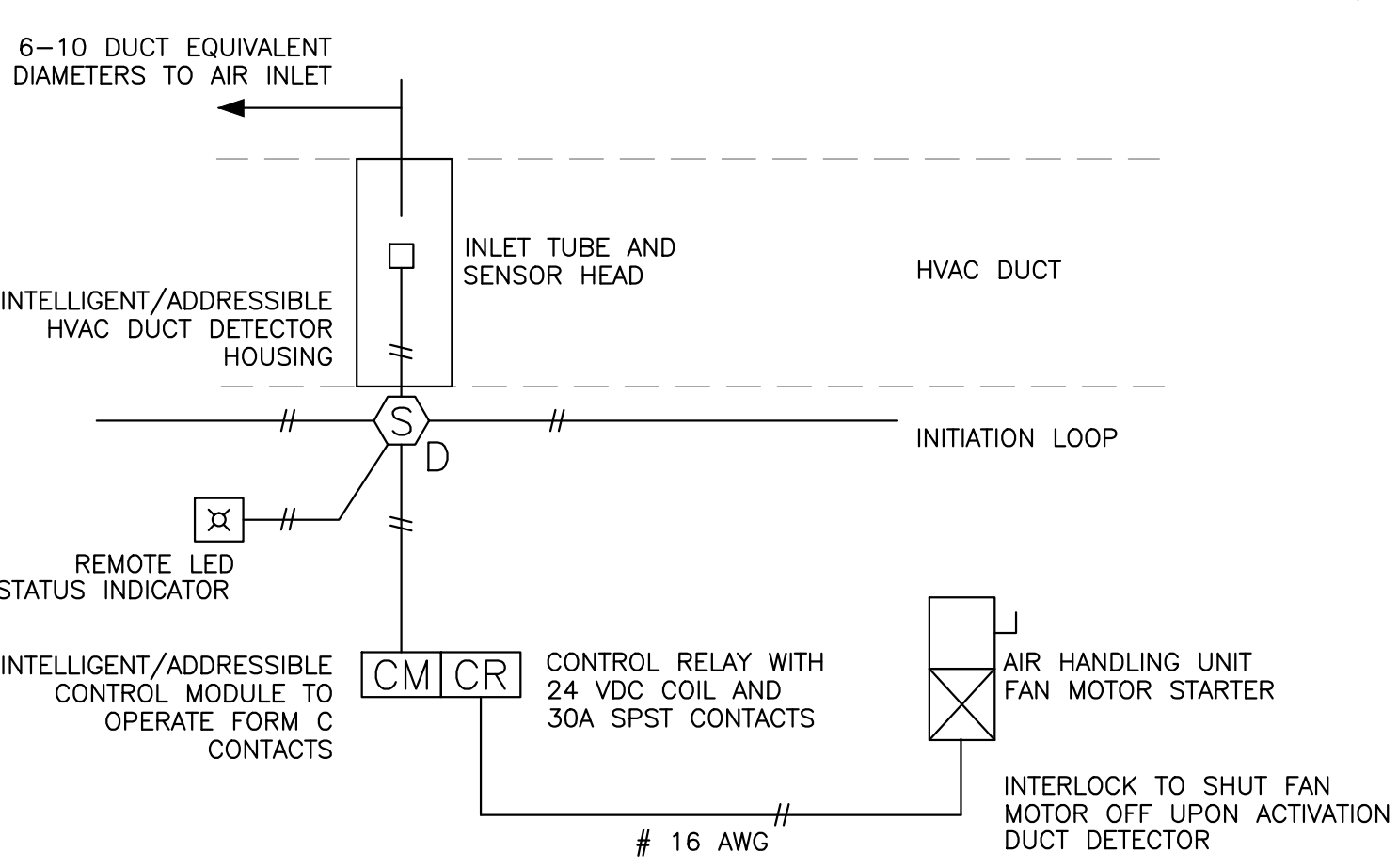
SINGLE LINE DIAGRAM SYMBOLS



4 Building Service Meter Center
None

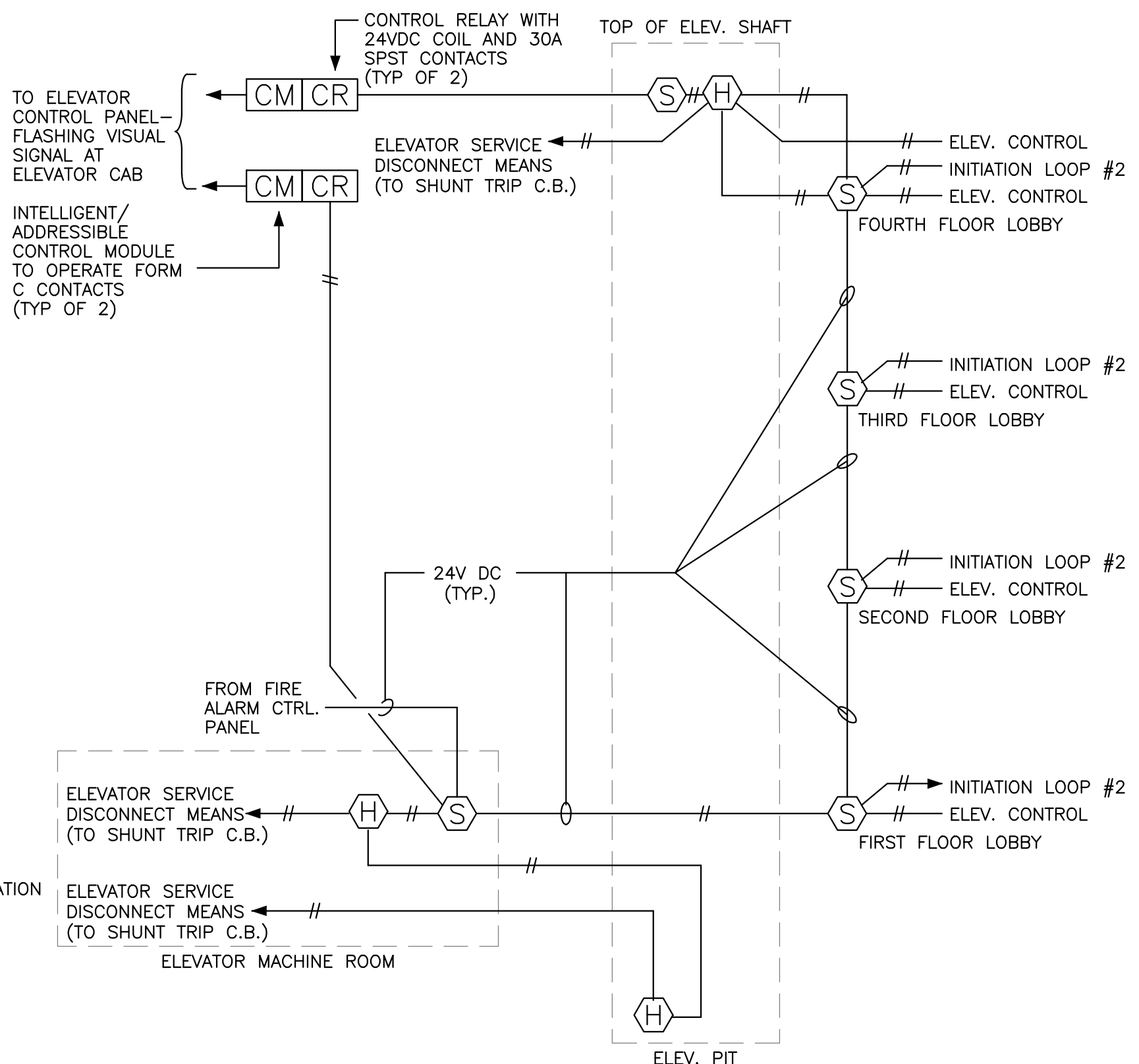


4 Single Line Diagram
None



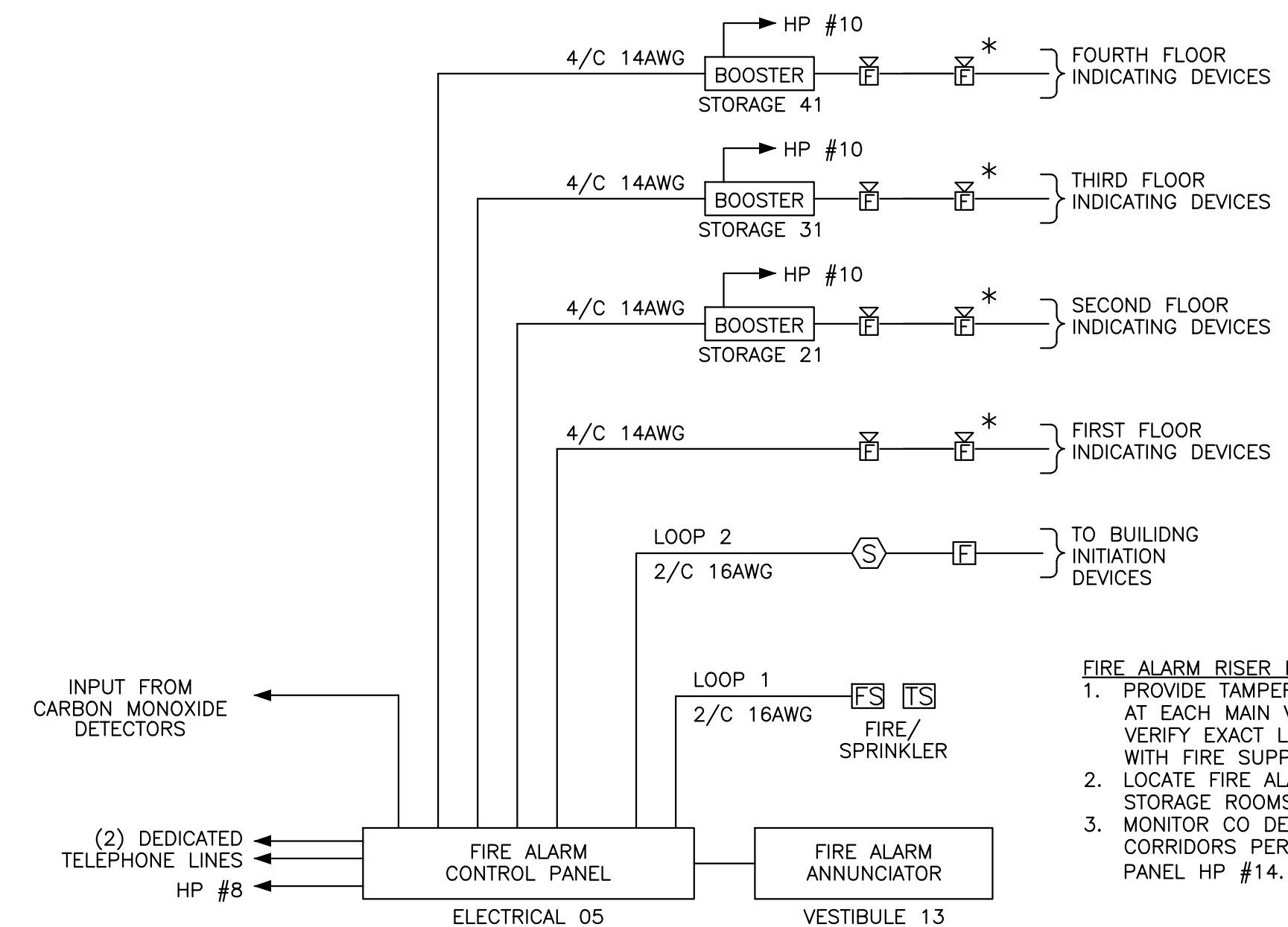
INSTALL DUCT DETECTORS IN CONFORMANCE WITH NFPA 90A
PROVIDE SINGLE DUCT DETECTOR FOR HVAC UNITS SIZED 2000 CFM - 4000 CFM.
PROVIDE DUCT DETECTORS IN BOTH SUPPLY AND RETURN DUCTS FOR HVAC UNITS SIZED ABOVE 4000 CFM.

1 Fire Alarm HVAC Interface Diagram
None



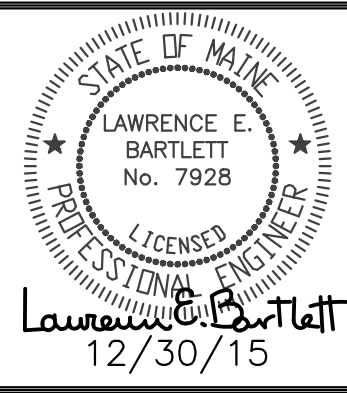
2 Fire Alarm Elevator Recall Interface Diagram
None

- ELEVATOR FIRE ALARM INTERFACE WIRING DIAGRAM NOTES:**
1. AUTOMATIC HEAT DETECTORS SHOWN FOR AUTOMATIC DISCONNECT OF ELEVATOR ELECTRIC SERVICE BY MEANS OF SHUNT TRIP C.B. ARE REQUIRED ONLY WHEN FACILITY IS SPRINKLERED.
 2. FOR SPRINKLERED FACILITIES, WHEN A SPRINKLER HEAD IS LOCATED IN THE ELEVATOR SHAFT WITHIN 24" OF THE PIT FLOOR, THE AUTOMATIC HEAT DETECTOR AT THE ELEVATOR PIT FOR ELEVATOR SERVICE DISCONNECT IS NOT REQUIRED.
 3. FOR SPRINKLERED FACILITIES WHERE NO SPRINKLER HEADS ARE INSTALLED IN THE ELEVATOR SHAFT, NEITHER THE AUTOMATIC HEAT DETECTOR AT THE TOP OF THE ELEVATOR SHAFT FOR ELEVATOR DISCONNECT, NOR THE AUTOMATIC SMOKE DETECTOR AT THE TOP OF THE ELEVATOR ARE REQUIRED.
 4. ADJUST QUANTITY OF SMOKE DETECTORS AND INITIATION LOOPS AS NECESSARY TO ACCOMMODATE ALL ELEVATOR STOPS.
 5. PROVE A SMOKE DETECTOR AT THE TOP OF THE ELEVATOR SHAFT TO OPERATE THE SMOKE DAMPER.
 6. INSTALL DETECTORS AND WIRING IN CONFORMANCE WITH STATE ELEVATOR CODE.



- FIRE ALARM RISER NOTES:**
1. PROVIDE TAMPER AND FLOW SWITCHES AT EACH MAIN VALVE AS REQUIRED. VERIFY EXACT LOCATION AND QUANTITIES WITH FIRE SUPPRESSION DRAWINGS.
 2. LOCATE FIRE ALARM BOOSTERS IN STORAGE ROOMS.
 3. MONITOR CO DETECTORS IN PUBLIC CORRIDORS PER FLOOR. CIRCUIT TO PANEL HP #14.

3 Fire Alarm Riser Diagram
None



Prepared For:
Westbrook Development Corp. & Millbrook Estates LLP

Consultant:
Bartlett Design
LIGHTING & ELECTRICAL ENGINEERING
100 WASHINGTON STREET, PORTLAND, ME 04101
TEL: (207) 773-6022 FAX: (207) 773-6090

Architect:
ARCHETYPE Architects
Portland, Maine 04101
48 Union Wharf ARCHETYPE@ARCHETYPEPA.COM
(207) 773-6022

Project:
MILLBROOK ESTATE SENIOR HOUSING
300 East Bridge Street
Westbrook, ME 04092

Revisions:

Date: **JAN 04, 2016**
Scale: **NONE**

ELECTRICAL DETAILS
E2.02

FOR BID