

Prepared For:
Westbrook Development Corp. & Millbrook Estates LLP

Consultant:
Bartlett Design
 LIGHTING & ELECTRICAL ENGINEERING
 48 Union Wharf Portland, Maine 04101
 TEL: (207) 773-6022 FAX: (207) 773-6020

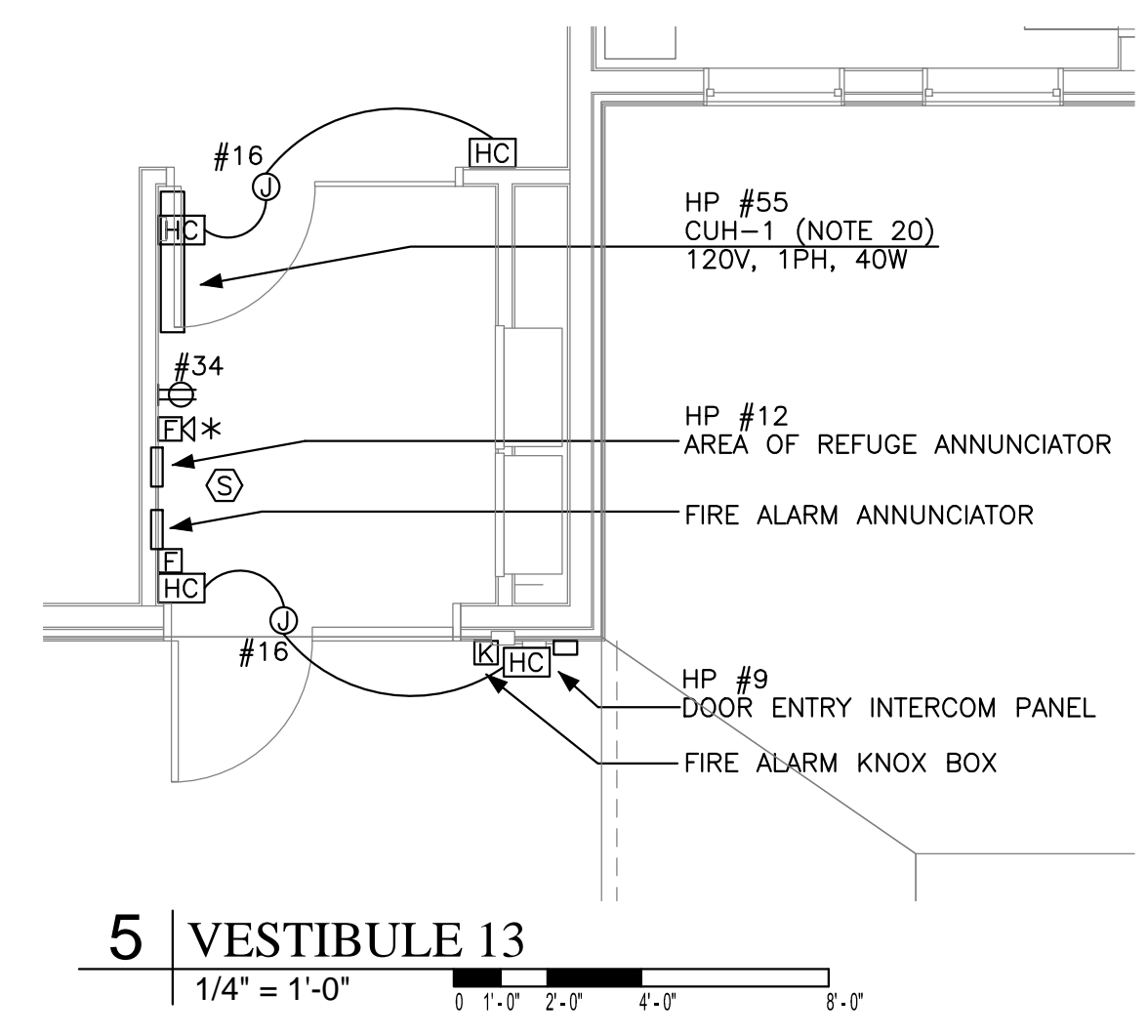
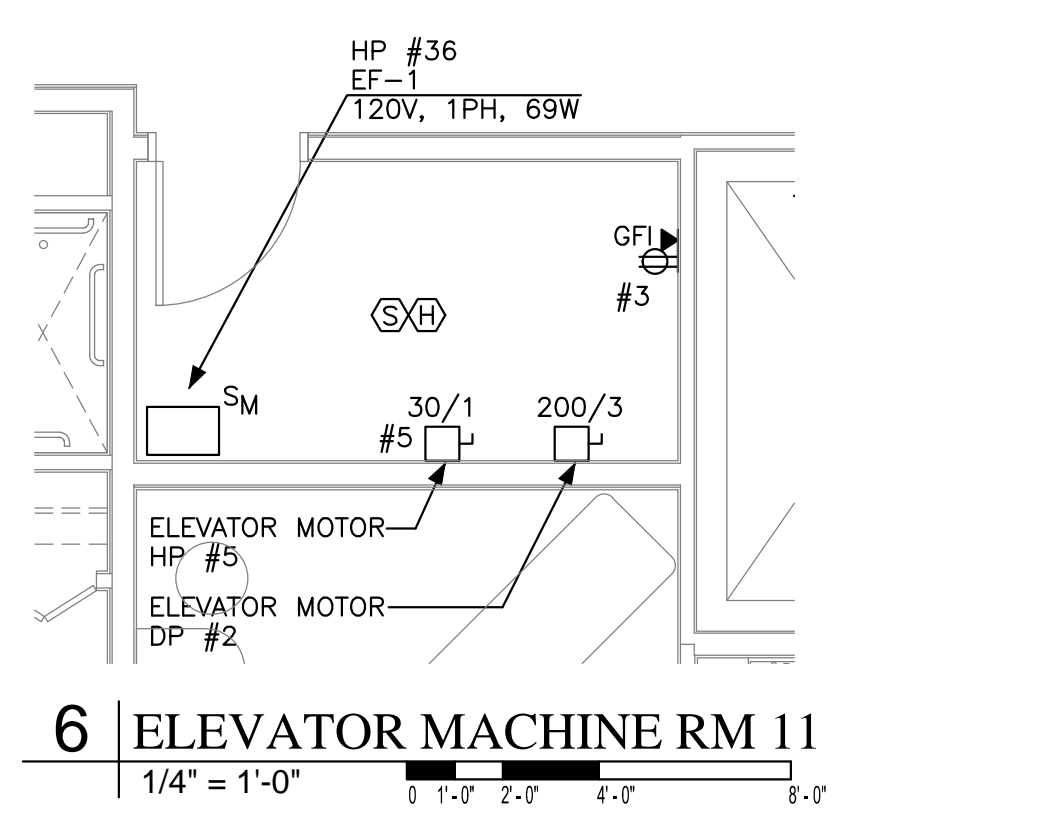
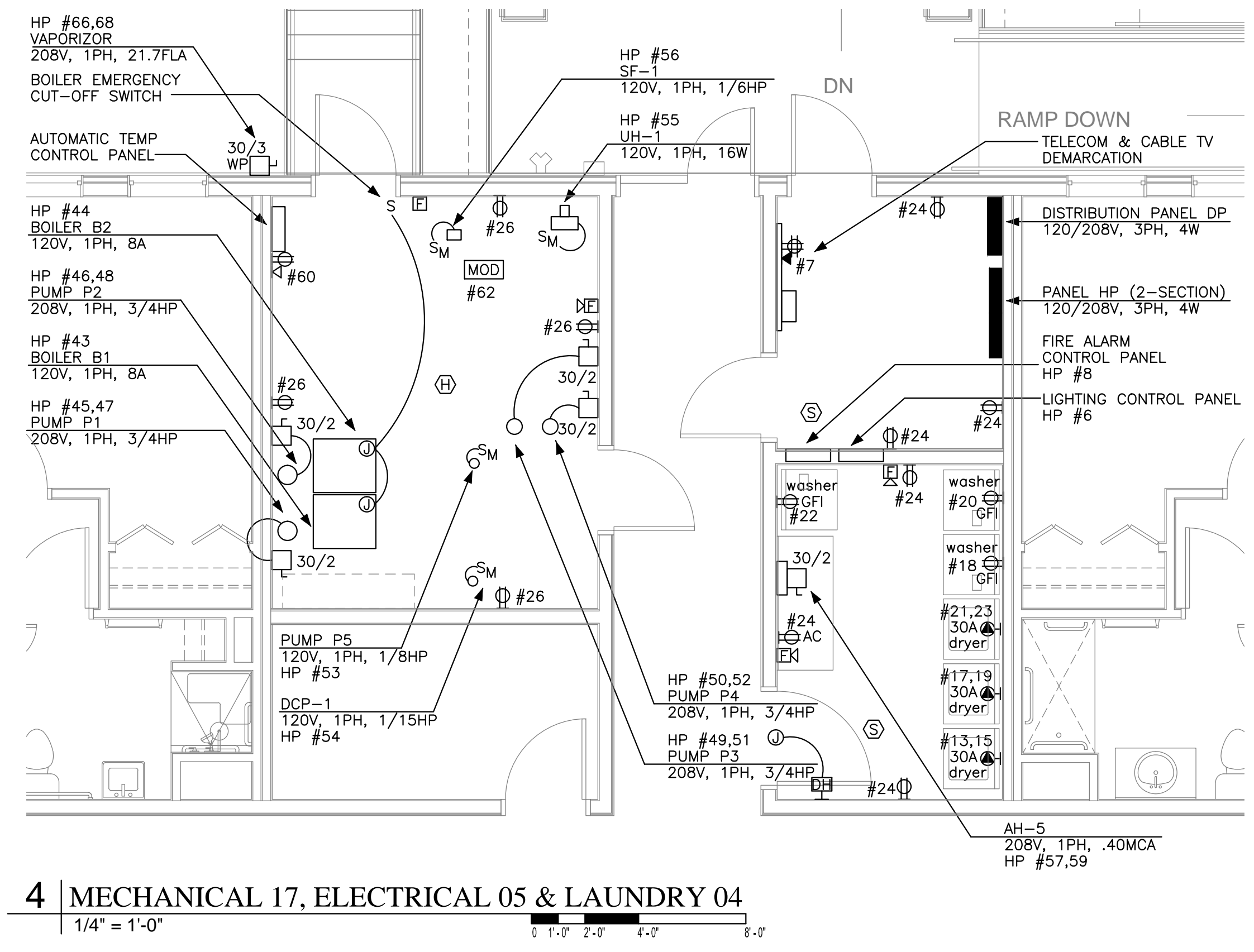
Architect:
ARCHETYPE Architects
 48 Union Wharf Portland, Maine 04101
 (207) 773-6022 ARCHETYPE@ARCHETYPEPA.COM

Project:
MILLBROOK ESTATE SENIOR HOUSING
 300 East Bridge Street
 Westbrook, ME 04092

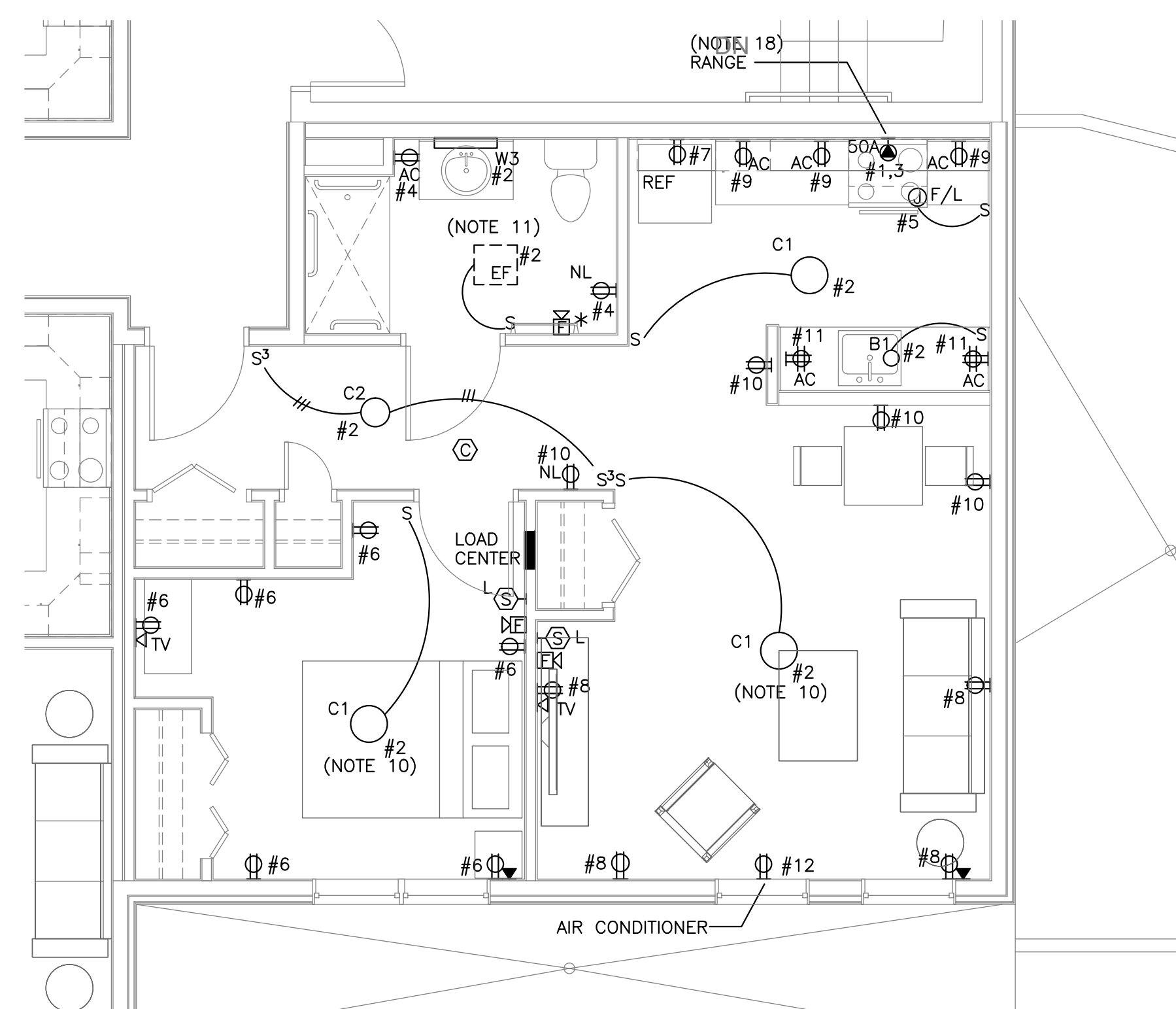
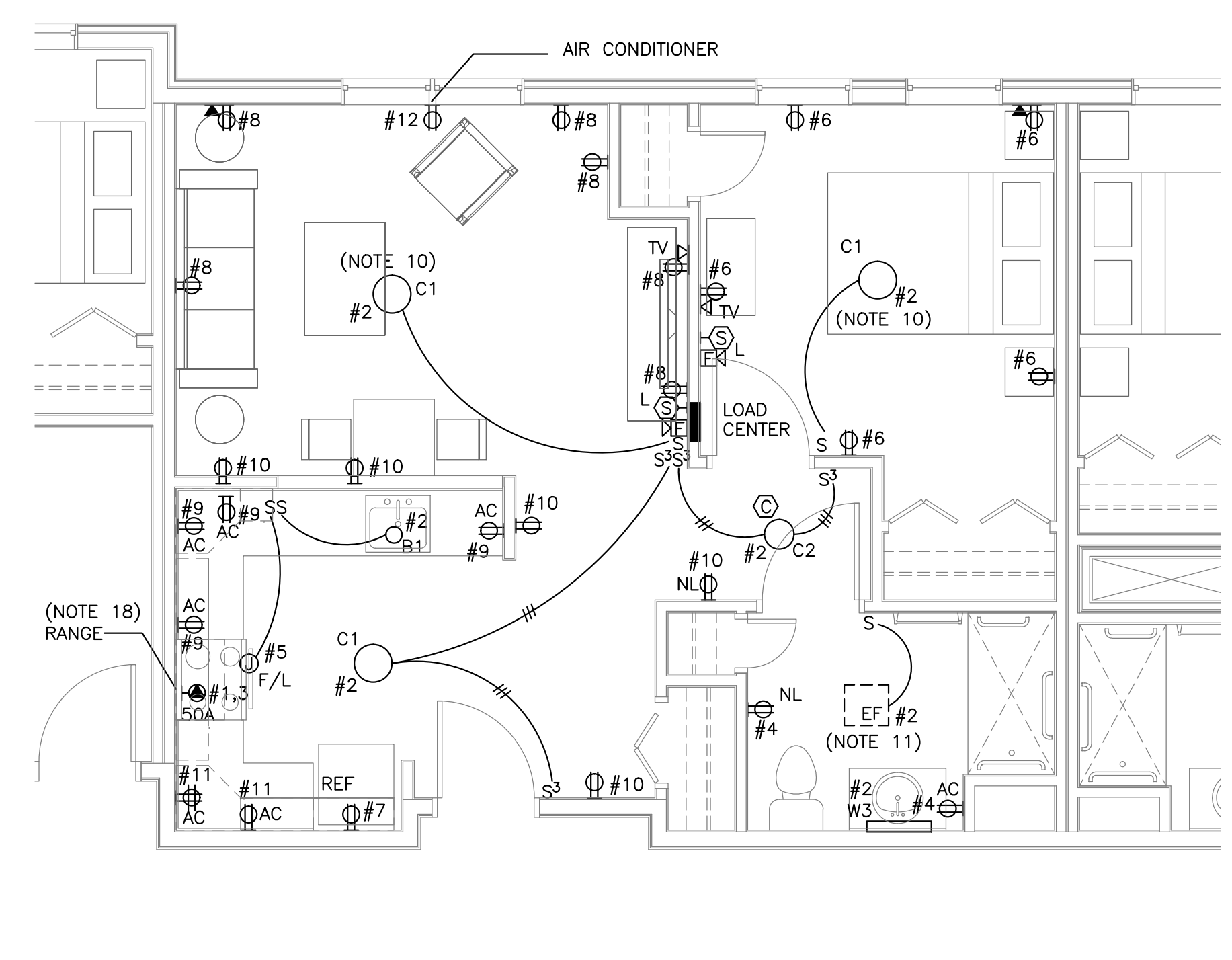
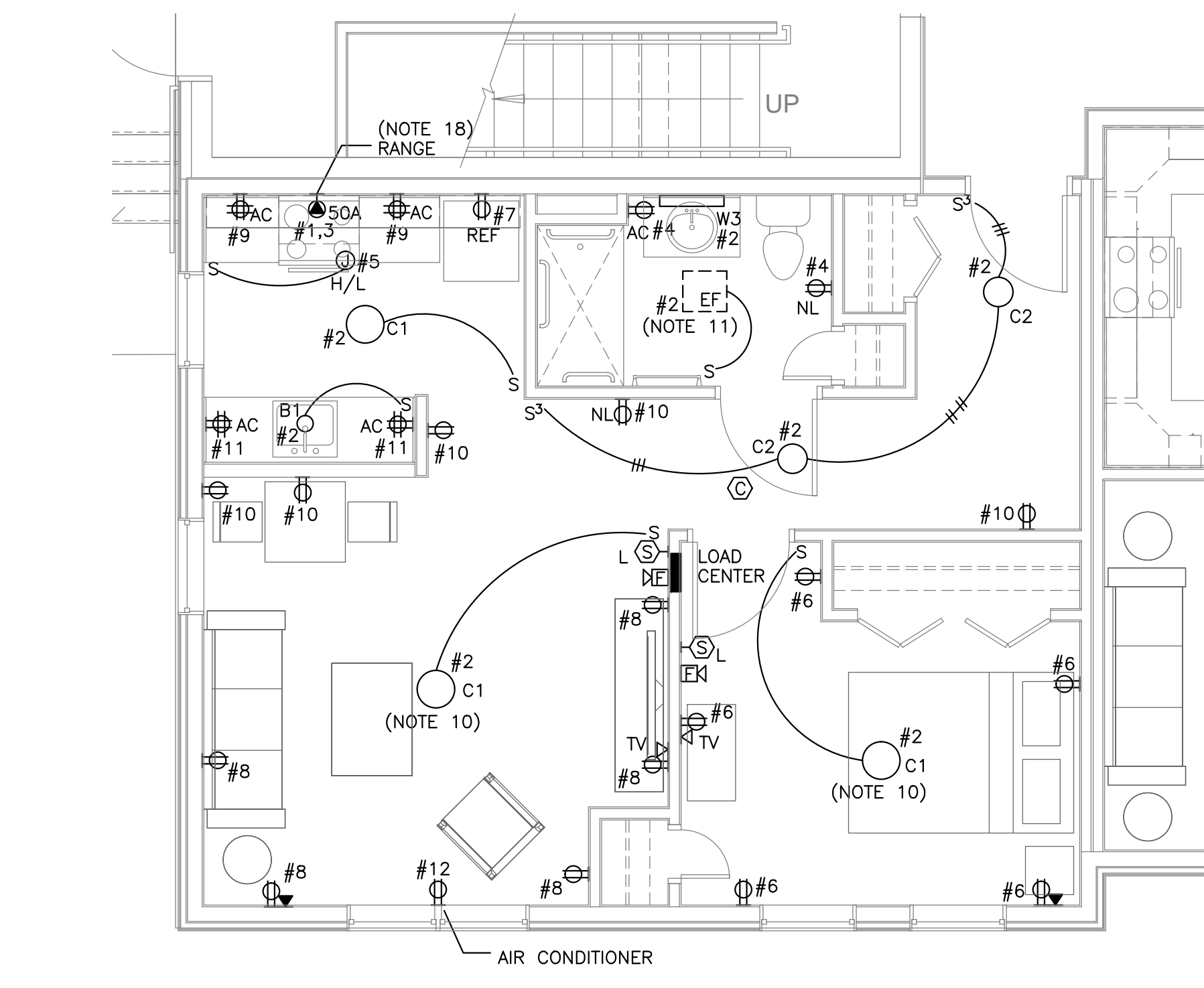
Revisions:

Date: **JAN 04, 2016**
 Scale: **1/8" = 1'-0"**

FOR BID
ENLARGED UNIT & DETAIL PLANS
E2.01



- PROJECT NOTES:**
- ALL 120V RECEPTACLES IN KITCHENS SHALL BE GFCI RATED EXCEPT FOR THE REFRIGERATOR.
 - MINIMUM CIRCUIT BREAKER SIZE SHALL BE 20 AMP. MINIMUM WIRE SIZE SHALL BE #12 AWG.
 - ALL 120 VOLT RECEPTACLE CIRCUITS IN LIVING UNITS SHALL BE ARC-FAULT TYPE CIRCUIT BREAKERS IN LOAD CENTERS, EXCEPT FOR BATHROOM RECEPTACLE CIRCUIT WHICH SHALL BE COMBINATION ARC-FAULT, GROUND FAULT.
 - ALL RECEPTACLES IN LIVING UNITS SHALL BE TAMPER-RESISTANT.
 - COMBINATION HORN/STROBE/SMOKE DETECTORS SHALL BE PHOTOELECTRIC TYPE.
 - SMOKE DETECTORS AND CARBON MONOXIDE DETECTORS IN LIVING UNITS SHALL BE CIRCUITED TO THE LOCAL LIGHTING CIRCUIT.
 - WHERE STROBE CANDELA RATING IS NOT SHOWN FOR HOUSE FIRE ALARM NOTIFICATION APPLIANCES, STROBE RATING SHALL BE 15cd. PROVIDE AN ABOVE COUNTER RECEPTACLE AT ALL KITCHEN COUNTERS THAT ARE GREATER THAN 12".
 - COORDINATE THE EXACT LOCATION OF RECEPTACLES IN KITCHENS SO THAT NO POINT ON THE COUNTER IS GREATER THAN 24" TO A RECEPTACLE.
 - UNDER BASE BID PROVIDE TYPE C1 LIGHT IN UNIT LIVING ROOMS AND BEDROOMS AS SHOWN. UNDER ALTERNATE BID PROVIDE A COMBINATION CEILING FAN/LIGHT IN UNIT LIVING ROOMS AND BEDROOMS. SEE SPECIFICATIONS FOR DETAILS.
 - MECHANICAL CONTRACTOR TO SUPPLY BATHROOM EXHAUST FAN/LIGHT WITH TIMER DELAY/HUMIDITY SENSOR SWITCH. COORDINATE INSTALLATION REQUIREMENTS WITH MECHANICAL CONTRACTOR. CIRCUIT FAN/LIGHT TO UNIT LIGHTING CIRCUIT.
 - DO NOT INSTALL FLUSH MOUNTED BOXES BACK-TO-BACK IN WALLS. PROVIDE A MINIMUM 24 INCH SEPARATION. WHERE 24 INCH SEPARATION IS NOT PHYSICALLY POSSIBLE, APPROVAL FOR CLOSER SPACING SHALL BE OBTAINED FROM THE ARCHITECT PRIOR TO ROUGH-IN. IN SUCH CASES, PROVIDE UL LISTED FIRESTOP PADS FOR BOXES.
 - PROVIDE AIR-VAPOR BARRIER BOXES FOR ALL OUTLETS IN CEILINGS AT THE TOP FLOOR. BOXES SHALL BE MANUFACTURED BY LESSCO. OR APPROVED EQUAL. CABLE PENETRATIONS AT AIR-SEAL BOXES SHALL BE SEALED.
 - ENSURE THAT OUTLET BOXES IN COMMON WALLS OF DWELLING UNITS ARE SEALED AGAINST AIR FILTRATION THROUGH THE USE OF CAULKING DRYWALL TO THE BOX AND PROVIDING COVER PLATE GASKETS.
 - PROVIDE DOOR CHIME BUTTON AND DOOR CHIME ASSOCIATED WITH UNIT 201.
 - CIRCUIT CARBON MONOXIDE DETECTORS IN COMMON CORRIDORS TO PANEL HP1 #14.
 - NOT USED.
 - ELECTRICAL CONTRACTOR TO PROVIDE (2) PAR20 LED LAMPS TO BE INSTALLED WITHIN KITCHEN HOOD.
 - CIRCUIT NUMBERS REFER TO PANEL HP UNLESS SPECIFICALLY NOTED OTHERWISE.
 - ELECTRICAL CONTRACTOR TO REMOVE CORD AND PLUG PROVIDE WITH CABINET UNIT HEATER. PROVIDE A SPST SWITCH MOUNTED EITHER BESIDE OR BELOW THE HEATER TO UNIT CONTROL. HARDWIRE HEATER TO PANEL HP #55.



TYPICAL FOR UNITS 101, 102, 110, 201, 202, 210, 301, 302, 310, 401, 402, & 410

TYPICAL FOR UNITS 103, 104, 107, 108, 109, 203, 204, 205, 206, 207, 208, 303, 304, 305, 306, 307, 308, 403, 404, 405, 406, 407, 408

TYPICAL FOR UNITS 209, 309, 409