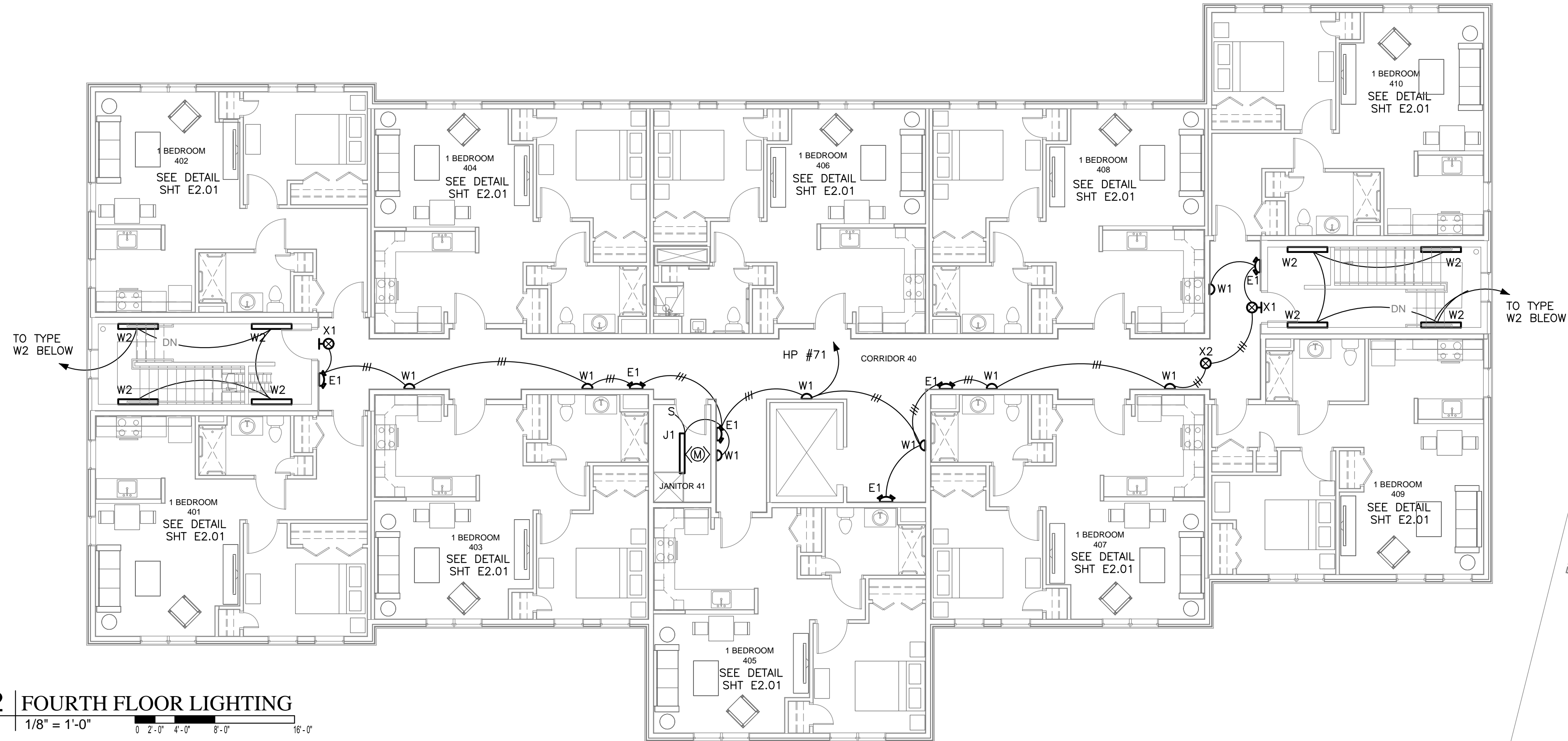


**1 | FOURTH FLOOR POWER**  
 1/8" = 1'-0"

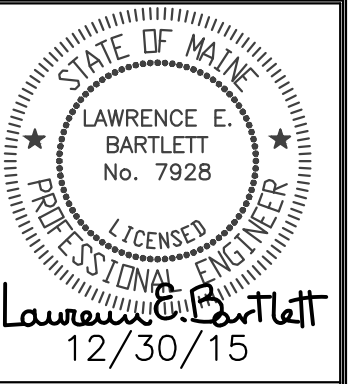


**2 | FOURTH FLOOR LIGHTING**  
 1/8" = 1'-0"

EXISTING BUILDING

EXISTING BUILDING

FOR BID



Prepared For:  
**Westbrook Development Corp. & Millbrook Estates LLP**

Consultant:  
**Bartlett Design**  
 LIGHTING & ELECTRICAL ENGINEERING  
 48 UNION WHARF PORTLAND, ME 04101  
 TEL: (207) 773-6022 FAX: (207) 773-6090

Architect:  
**ARCHETYPE**  
 Architects  
 48 Union Wharf Portland, Maine 04101  
 (207) 773-6022 ARCHETYPE@ARCHETYPEPA.COM

Project:  
**MILLBROOK ESTATE SENIOR HOUSING**  
 300 East Bridge Street  
 Westbrook, ME 04092

Revisions:

Date: **JAN 04, 2016**  
 Scale: **1/8" = 1'-0"**  
**FOURTH FLOOR LIGHTING & POWER PLANS**

**E1.04**