

Prepared For:  
**Westbrook Development Corp. & Millbrook Estates LLP**

Consultant:  
**Bartlett Design**  
 LIGHTING & ELECTRICAL ENGINEERING  
 100 WASHINGTON STREET, SUITE 400  
 WESTBROOK, ME 04091  
 TEL: (603) 468-9447 FAX: (603) 468-9490

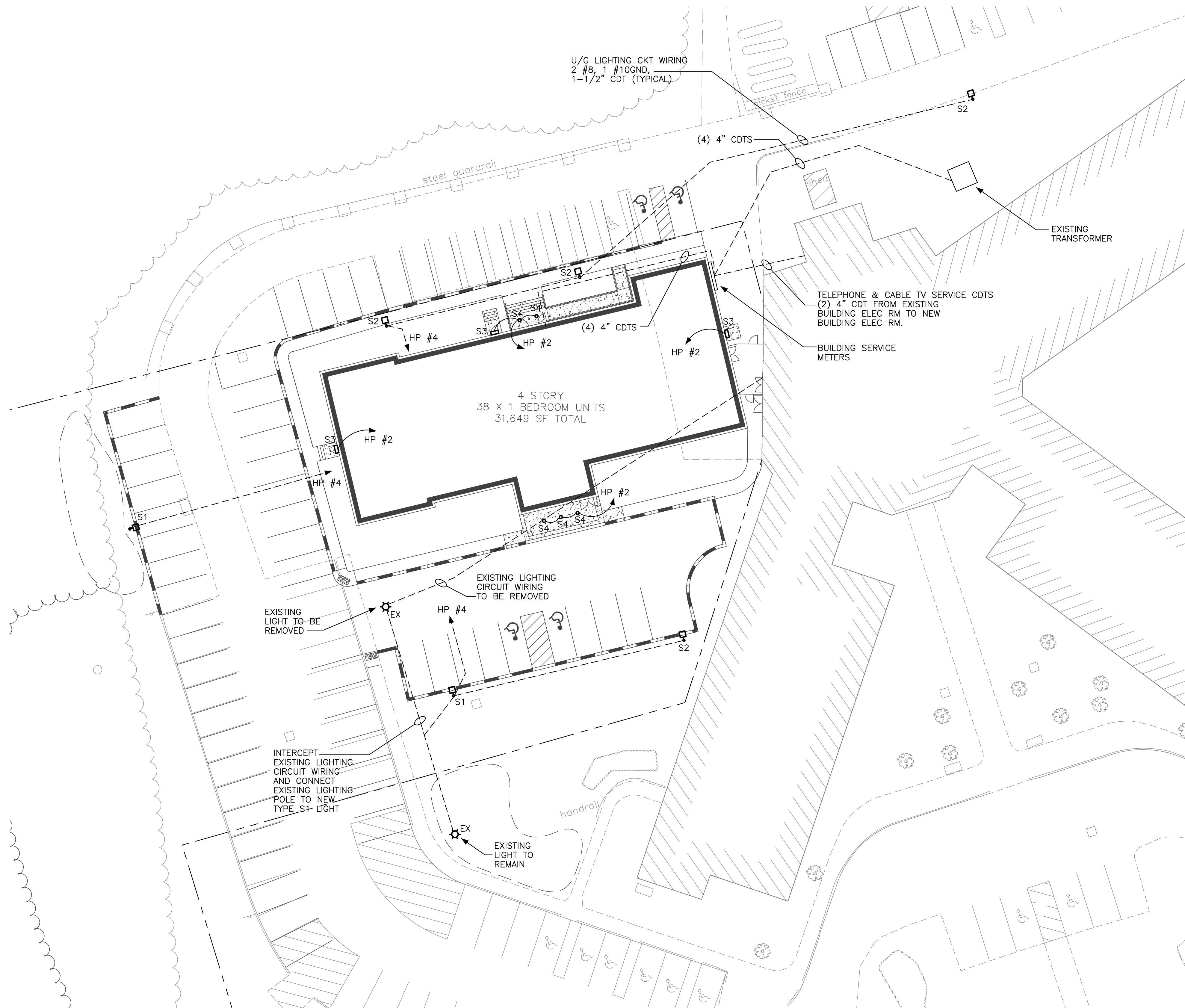
Architect:  
**ARCHETYPE Architects**  
 48 Union Wharf Portland, Maine 04101  
 (207) 772-6022 ARCHETYPE@ARCHETYPEPA.COM

Project:  
**MILLBROOK ESTATE SENIOR HOUSING**  
 300 East Bridge Street  
 Westbrook, ME 04092

Revisions:

Date: **JAN 04, 2016**  
 Scale: **1" = 20'-0"**  
**ELECTRICAL SITE PLAN**

**E0.01**



**1 ELECTRICAL SITE PLAN**  
 1" = 20'-0"

| PLAN SYMBOLS |   | SINGLE LINE DIAGRAM SYMBOLS |   |
|--------------|---|-----------------------------|---|
| SYMBOL       | DESCRIPTION   | SYMBOL                      | DESCRIPTION   |
|              | 125V, 20A, DUPLEX GROUND RECEPTACLE<br>GFI = Ground Fault Type<br>WP = Weatherproof<br>AC = Mount 6" Above Counter<br>DW = Dishwasher<br>REF = Refrigerator<br>NL = Nightlight Receptacle Combo |                             | Ampere Frame Rating (3 poles Except as Noted Otherwise) |
|              | 125V, 20A, QUAD GROUND RECEPTACLE   |                             | CIRCUIT BREAKER<br>Ampere Trip Rating                   |
|              | 250V, SINGLE GROUND RECEPTACLE<br>Ampere Rating   |                             | ELECTRICAL CONNECTION                                   |
|              | TELEPHONE OUTLET  |                             | GROUND CONNECTION                                       |
|              | CABLE TELEVISION OUTLET   |                             | EQUIPMENT ENCLOSURE                                     |
|              | DATA NETWORK OUTLET   |                             | TRANSFORMER   |
|              | MANUAL MOTOR SWITCH   |                             | UNFUSED SWITCH<br>No. of Poles<br>Ampere Rating         |
|              | FIRE ALARM SMOKE DETECTOR<br>Indicates Localized Detector   |                             | UTILITY CO. SERVICE METER                               |
|              | FIRE ALARM CARBON MONOXIDE SENSOR<br>Indicates Localized Detector   |                             |   |
|              | FIRE ALARM AUDIO VISUAL<br>Indicates Visual Only  |                             |   |
|              | FIRE ALARM PULL STATION   |                             |   |
|              | FIRE ALARM HEAT DETECTOR  |                             |   |
|              | HANDICAP DOOR OPENER  |                             |   |
|              | DOOR INTERCOM STATION   |                             |   |
|              | JUNCTION BOX<br>H/L = Range Hood & Lights   |                             |   |
|              | #2 CEILING MTD. FLUORESCENT LIGHT<br>Load Center Circuit Number<br>Fixture Designation  |                             |   |
|              | RECESSED/CEILING MOUNTED LIGHT FIXTURE  |                             |   |
|              | LIGHT/DEVICE SWITCH<br>3 = Three-Way Type   |                             |   |
|              | CEILING MTD. LGT CONTROL MOTION SENSOR  |                             |   |
|              | ELECTRIC LOAD CENTER/PANELBOARD<br>Recess Mounted   |                             |   |
|              | ELECTRIC LOAD CENTER/PANELBOARD<br>Surface Mounted  |                             |   |
|              | MOTOR OPERATED DAMPER<br>(Provided Under Div 15)  |                             |   |
|              | COMBINATION FAN/LIGHT<br>(Provided Under Div 15)  |                             |   |

FOR BID