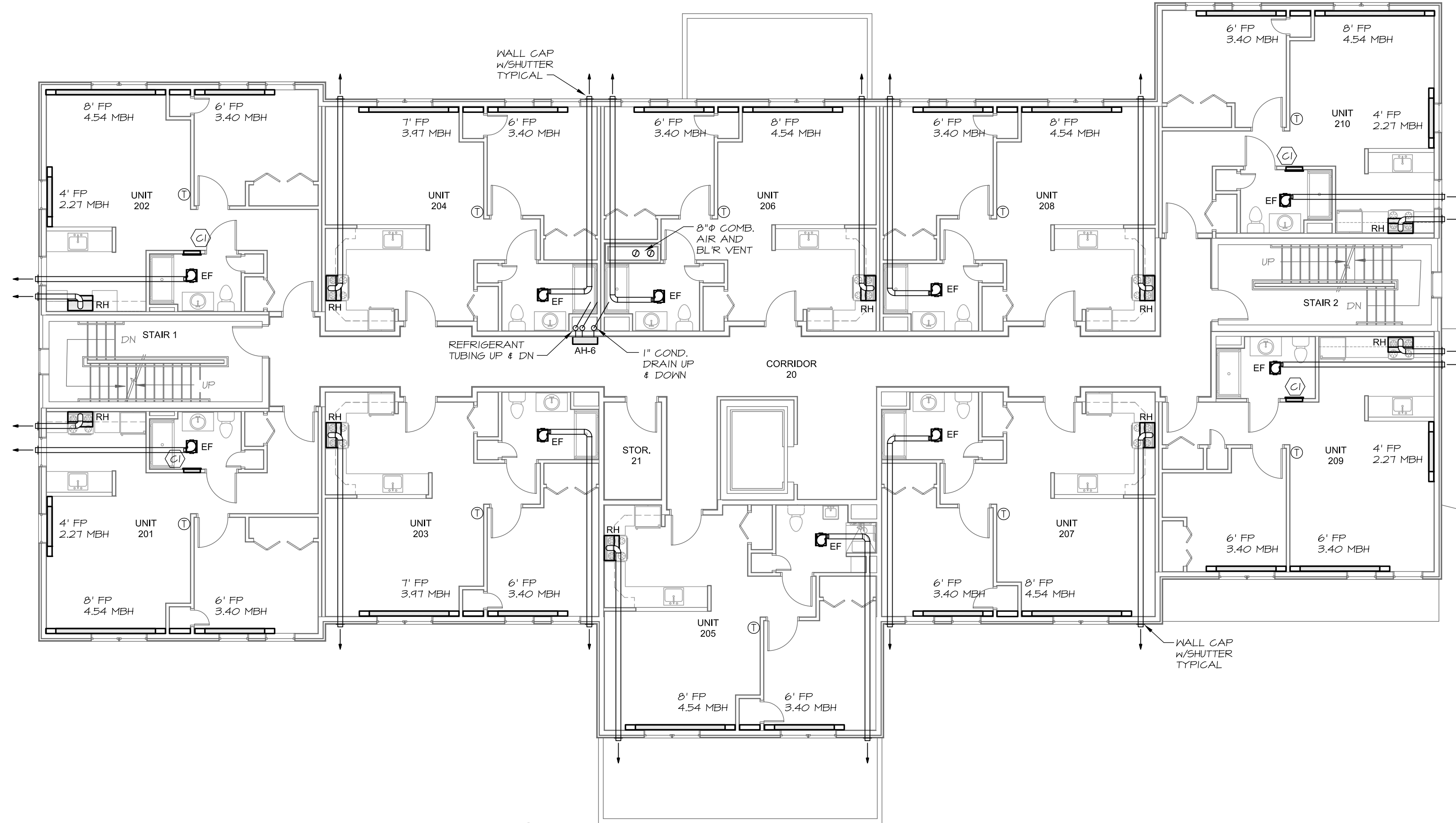


# APARTMENT WATER FLOW

UNIT	MBH	GPM
101	11.91	1.25
102	11.91	1.25
103	9.07	1.00
104	9.07	1.00
107	9.07	1.00
108	9.07	1.00
109	9.64	1.00
110	12.47	1.25
201	10.21	1.25
202	10.21	1.25
203	7.37	1.00
204	7.37	1.00
205	7.94	1.00
206	7.94	1.00
207	7.94	1.00
208	7.94	1.00
209	9.07	1.00
210	10.21	1.25
301	10.21	1.25
302	10.21	1.25
303	7.37	1.00
304	7.37	1.00
305	7.94	1.00
306	6.80	1.00
307	7.37	1.00
308	6.80	1.00
309	8.51	1.00
310	10.21	1.25
401	10.21	1.25
402	10.77	1.25
403	7.94	1.00
404	7.94	1.00
405	8.51	1.00
406	7.94	1.00
407	7.94	1.00
408	7.94	1.00
409	9.07	1.00
410	10.21	1.25



**3 SECOND FLOOR MECHANICAL PLAN**  
SCALE: 1/8" = 1'-0"

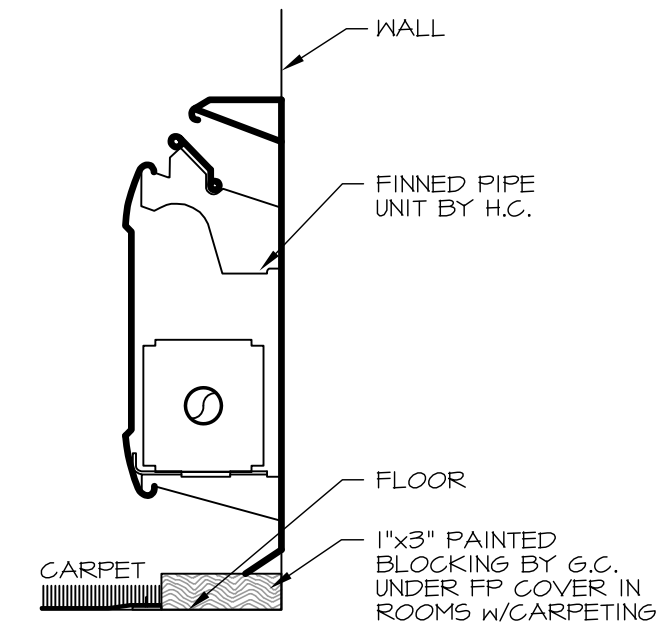
ALL RANGE HOODS TO HAVE 7" DUCTS WRAPPED IN FIRE BLANKET ABOVE THE GYPSUM CEILINGS. THEN REDUCE TO 6" AT EXTERIOR WALLS AND EXIT WITH WALL CAPS

ALL BATHROOM EXHAUST FANS TO HAVE RADIATION DAMPERS, 6" DUCTS AND 6" WALL CAPS.

BRANCH PIPING TO ALL HEATING ZONES AND TERMINAL UNITS TO BE 3/4" PEX UNLESS NOTED OTHERWISE.

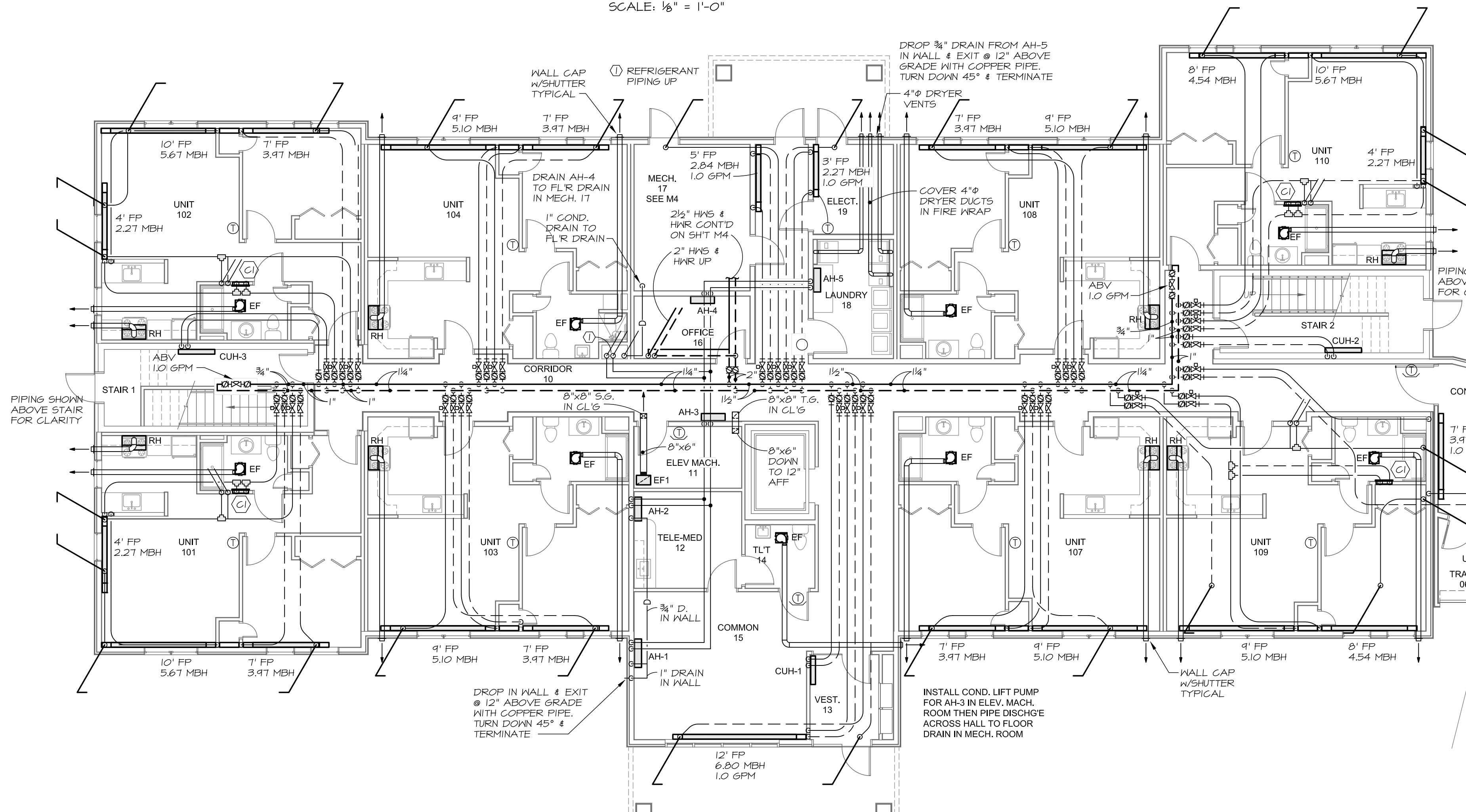
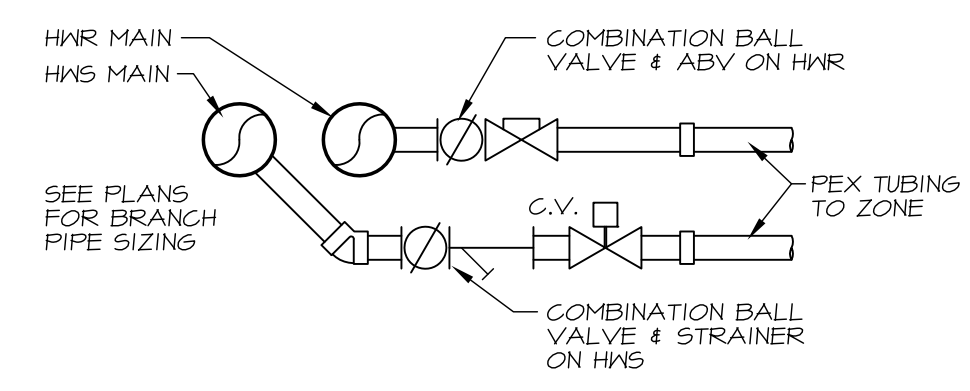
## 1 FINNED PIPE MOUNTING DETAIL

NO SCALE



## 2 BRANCH PIPING CONNECTION AT MAINS

NO SCALE

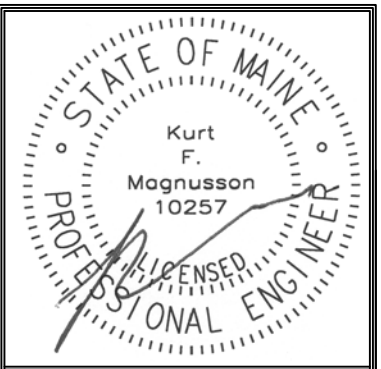
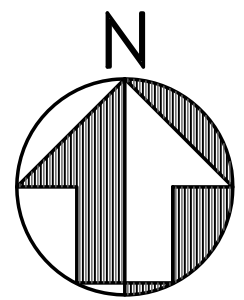


**4 FIRST FLOOR MECHANICAL PLAN**  
SCALE: 1/8" = 1'-0"

ALL RANGE HOODS TO HAVE 7" DUCTS WRAPPED IN FIRE BLANKET ABOVE THE GYPSUM CEILINGS. THEN REDUCE TO 6" AT EXTERIOR WALLS AND EXIT WITH WALL CAPS

ALL BATHROOM EXHAUST FANS TO HAVE RADIATION DAMPERS, 6" DUCTS AND 6" WALL CAPS.

BRANCH PIPING TO ALL HEATING ZONES AND TERMINAL UNITS TO BE 3/4" PEX UNLESS NOTED OTHERWISE.



Prepared For:  
**WESTBROOK HOUSING AUTHORITY**  
Westbrook, ME 04330

Consulting Engineer:  
**MECHANICAL SYSTEMS ENGINEERS**  
ROYAL RIVER CENTER, UNIT 108  
10 FOREST FALLS ROAD, WESTBROOK, ME 04091  
FACEBOOK: MECHANICAL SYSTEMS ENGINEERS  
© COPYRIGHT 2016

Architect:  
**ARCHITECTYPE architects**  
48 Union Wharf Portland, Maine 04101  
(207) 775-0022 ARCHITYPE@ARCHITYPEPA.COM  
© COPYRIGHT 2016

Project:  
**MILLBROOK ESTATES APARTMENTS**  
WESTBROOK, MAINE

Revisions:  
1-04-2016 Bid Set

Date: 04 JAN. 2016  
Scale: 1/8" = 1'-0"  
**1st & 2nd FLOORS MECHANICAL PLANS**



December 11, 2015 - 3:44 pm  
\\WestPSE1\Projects\1513 Millbrook Estates\Drawings\1513 M1-M3.dwg