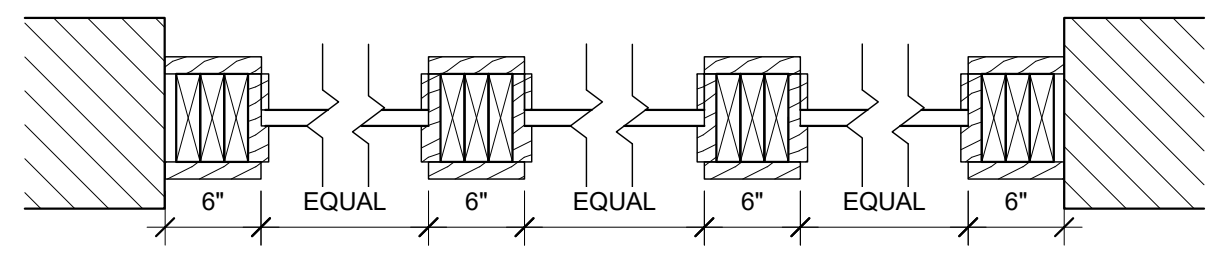


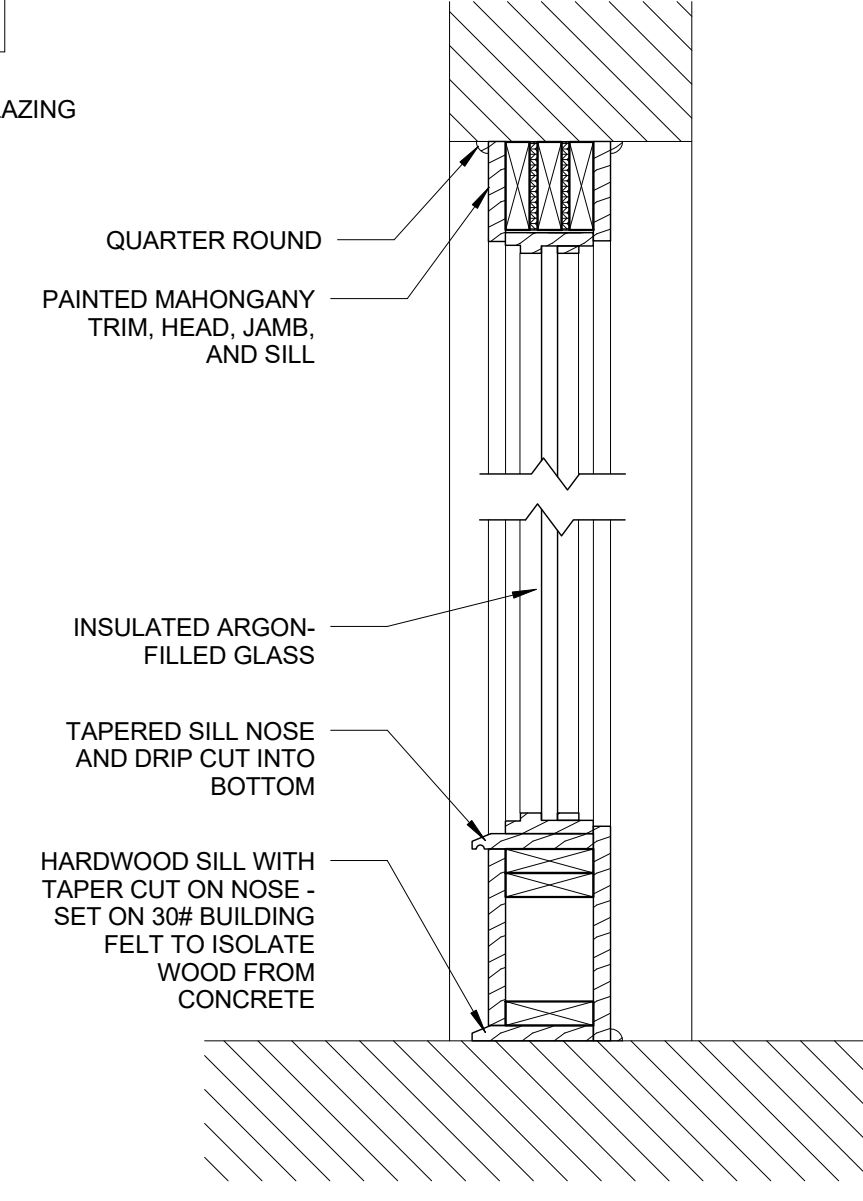
**2 WINDOW ELEVATIONS**

3/8" = 1'-0"



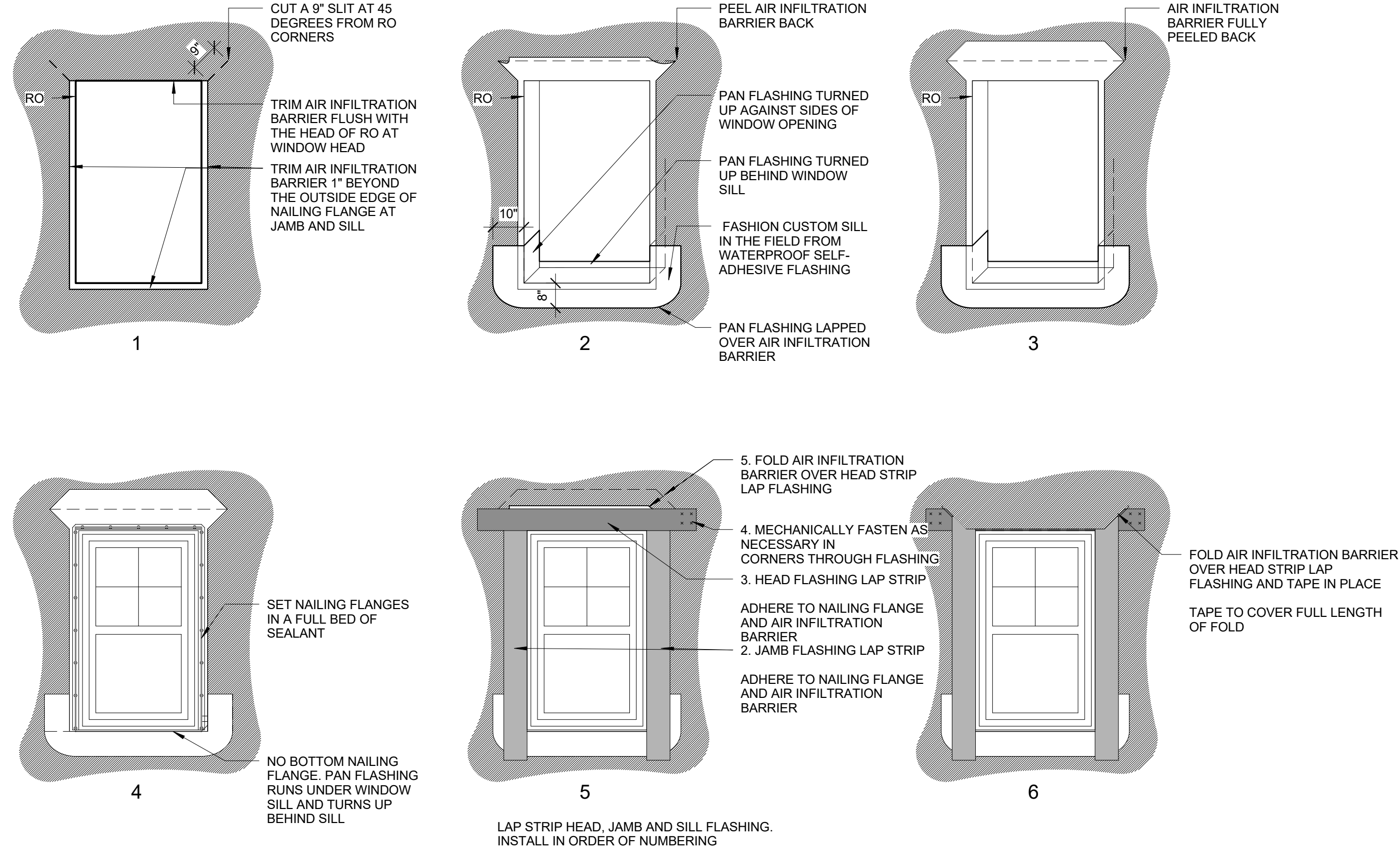
**4 TYPICAL STOREFRONT PLAN**

1" = 1'-0"



**5 TYPICAL STOREFRONT SECTION**

1" = 1'-0"



**ORDER OF INSTALLATION OF WATER PROOFING AT WINDOWS. WATER PROOFING AT STOREFRONT AND DOORS USE STEPS 1-3**

NOTE: MOCK-UP FIRST WINDOW TO BE APPROVED BY MSHA, AND ARCHITECT PRIOR TO ANY INSTALLATION

**3 ORDER OF INSTALLATION OF WATERPROOFING AT WINDOWS**

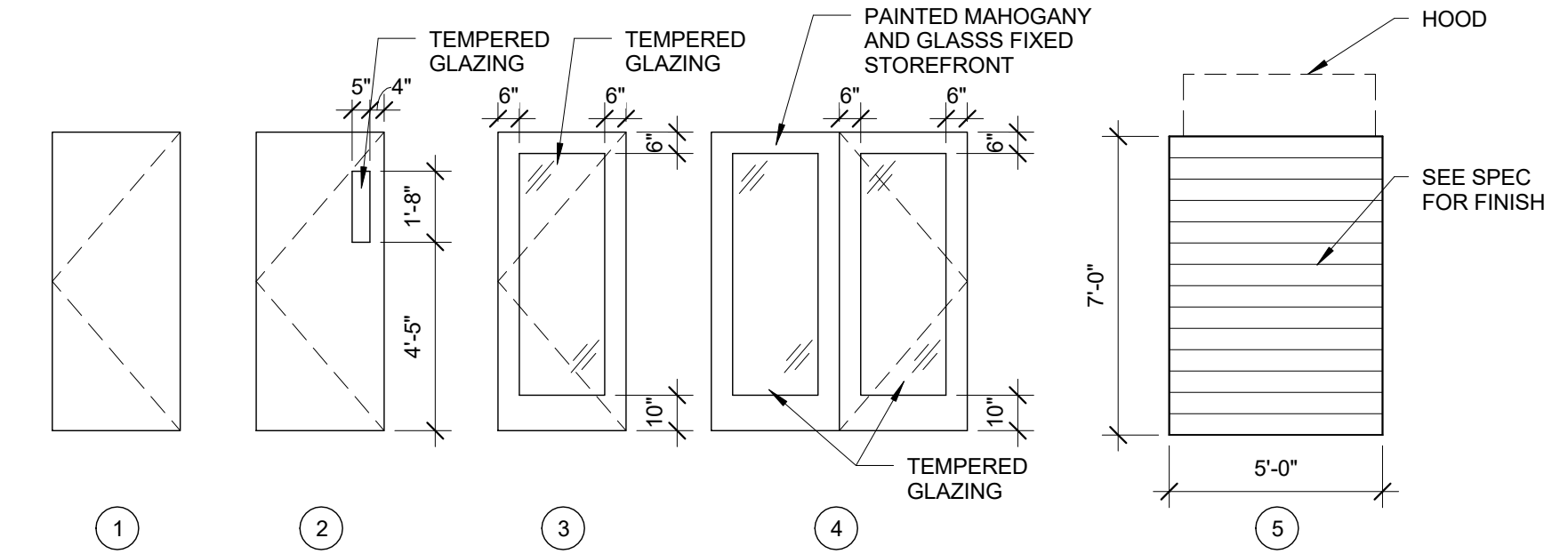
3/8" = 1'-0"

- 1. INSTALL AIR INFILTRATION BARRIER IN ORDER AS SHOWN BY NUMBERS.
- 2. IF APPLICABLE, LEAVE RELEASE PAPER ON LOWER HALF OF SILL FLASHING UNTIL FUTURE TIE-IN.
- 3. INSTALL FLASHING AND AIR INFILTRATION BARRIER TO FORM WATER SHEDDING LAPS.
- 4. COORDINATE WITH FLASHING REQUIREMENTS OF WINDOW MANUFACTURER.
- 5. FOLLOW MANUFACTURER'S RECOMMENDATIONS FOR INSTALLATION.

**DOOR SCHEDULE**

Level	DOOR No.	LOCATION	DOOR W	H	THCK	TYPE	MATL	FINISH	FRAME THRESHOLD	MATL	FINISH	LABEL	OPER.	SWEEP	CL.	REMARKS
1ST FLOOR	101	VEST.	6'-0"	7'-0"	1 3/4"	4	MAHOGANY	PAINTED	ALUMINUM	WD	PAINTED	-	ENTRY	Yes	Yes	
1ST FLOOR	102	VEST.	6'-0"	7'-0"	1 3/4"	4	WD	PAINTED	ALUMINUM	WD	PAINTED	-	PASSAGE	Yes	Yes	
1ST FLOOR	103	TELE-MED ROOM	3'-0"	7'-0"	1 3/4"	1	WD	PAINTED	ALUMINUM	HM	PAINTED	-	OFFICE	Yes	No	
1ST FLOOR	105	ELEV.MACH.	3'-0"	7'-0"	1 3/4"	1	HM	PAINTED	ALUMINUM	HM	PAINTED	20	STORAGE	Yes	Yes	
1ST FLOOR	106	STAIR 1	3'-0"	7'-0"	1 3/4"	2	HM	PAINTED	ALUMINUM	HM	PAINTED	90	PASSAGE	Yes	Yes	
1ST FLOOR	107	STAIR 1	3'-0"	7'-0"	1 3/4"	1	GALV-INSUL HM	PAINTED	ALUMINUM	HM	PAINTED	-	ENTRY	Yes	Yes	
1ST FLOOR	108	OFFICE	3'-0"	7'-0"	1 3/4"	1	HM	PAINTED	ALUMINUM	HM	PAINTED	20	OFFICE	Yes	No	
1ST FLOOR	109	MECHANICAL	3'-0"	7'-0"	1 3/4"	1	HM	PAINTED	ALUMINUM	HM	PAINTED	20	STORAGE	Yes	Yes	
1ST FLOOR	110	MECHANICAL	3'-0"	7'-0"	1 3/4"	1	GALV-INSUL HM	PAINTED	ALUMINUM	HM	PAINTED	-	STORAGE	Yes	Yes	
1ST FLOOR	111	CORRIDOR	5'-0"	7'-0"	1 3/4"	4	MAHOGANY	PAINTED	ALUMINUM	HM	PAINTED	-	ENTRY	Yes	Yes	
1ST FLOOR	112	LAUNDRY	3'-6"	7'-0"	1 3/4"	1	HM	PAINTED	ALUMINUM	HM	PAINTED	60	PASSAGE	Yes	Yes	MAG HOLD OPEN
1ST FLOOR	113	ELEC.	3'-0"	7'-0"	1 3/4"	1	HM	PAINTED	ALUMINUM	HM	PAINTED	20	STORAGE	Yes	Yes	
1ST FLOOR	114	STAIR 2	3'-0"	7'-0"	1 3/4"	2	HM	PAINTED	ALUMINUM	HM	PAINTED	90	PASSAGE	Yes	Yes	
1ST FLOOR	115	STAIR 2	3'-0"	7'-0"	1 3/4"	1	GALV-INSUL HM	PAINTED	ALUMINUM	HM	PAINTED	-	ENTRY	Yes	Yes	
1ST FLOOR	116	CONNECTOR	6'-0"	7'-0"	1 3/4"	4	GALV-INSUL HM	PAINTED	ALUMINUM	HM	PAINTED	-	ENTRY	Yes	Yes	
1ST FLOOR	117	CONNECTOR	4'-0"	7'-0"	1 3/4"	1	HM	PAINTED	ALUMINUM	HM	PAINTED	90	PASSAGE	Yes	Yes	MAG HOLD OPEN
1ST FLOOR	118	TRASH	5'-0"	7'-0"	2"	F	GALV-INSUL HM	PAINTED	ALUMINUM	HM	PAINTED	-	PASSAGE	Yes	Yes	OVERHEAD DOOR - REF. SPEC.
1ST FLOOR	119	ELEC.	3'-0"	7'-0"	1 3/4"	1	GALV-INSUL HM	PAINTED	ALUMINUM	HM	PAINTED	-	STORAGE	Yes	Yes	
1ST FLOOR	120	EXISTING	3'-0"	7'-0"	1 3/4"	1	EXISTING	PAINTED	EXISTING	EXISTING	PAINTED	-	PASSAGE	No	No	EXISTING DOOR - PAINT AND PROVIDE NEW HARDWARE
2ND FLOOR																
2ND FLOOR	201	STAIR 1	3'-0"	7'-0"	1 3/4"	2	HM	PAINTED	ALUMINUM	HM	PAINTED	90	PASSAGE	Yes	Yes	
2ND FLOOR	202	STORAGE	3'-0"	7'-0"	1 3/4"	1	HM	PAINTED	ALUMINUM	HM	PAINTED	20	STORAGE	Yes	Yes	
2ND FLOOR	203	STAIR 2	3'-0"	7'-0"	1 3/4"	2	HM	PAINTED	ALUMINUM	HM	PAINTED	90	PASSAGE	Yes	Yes	
3RD FLOOR																
3RD FLOOR	301	STAIR 1	3'-0"	7'-0"	1 3/4"	1	HM	PAINTED	ALUMINUM	HM	PAINTED	90	PASSAGE	Yes	Yes	
3RD FLOOR	302	STORAGE	3'-0"	7'-0"	1 3/4"	1	HM	PAINTED	ALUMINUM	HM	PAINTED	20	STORAGE	Yes	Yes	
3RD FLOOR	303	STAIR 2	3'-0"	7'-0"	1 3/4"	1	HM	PAINTED	ALUMINUM	HM	PAINTED	90	PASSAGE	Yes	Yes	
4TH FLOOR																
4TH FLOOR	401	STAIR 1	3'-0"	7'-0"	1 3/4"	1	HM	PAINTED	ALUMINUM	HM	PAINTED	90	PASSAGE	Yes	Yes	
4TH FLOOR	402	JANITOR	3'-0"	7'-0"	1 3/4"	1	HM	PAINTED	ALUMINUM	HM	PAINTED	20	STORAGE	Yes	Yes	
4TH FLOOR	403	STAIR 2	3'-0"	7'-0"	1 3/4"	1	HM	PAINTED	ALUMINUM	HM	PAINTED	90	PASSAGE	Yes	Yes	

**PUBLIC AREA DOORS**



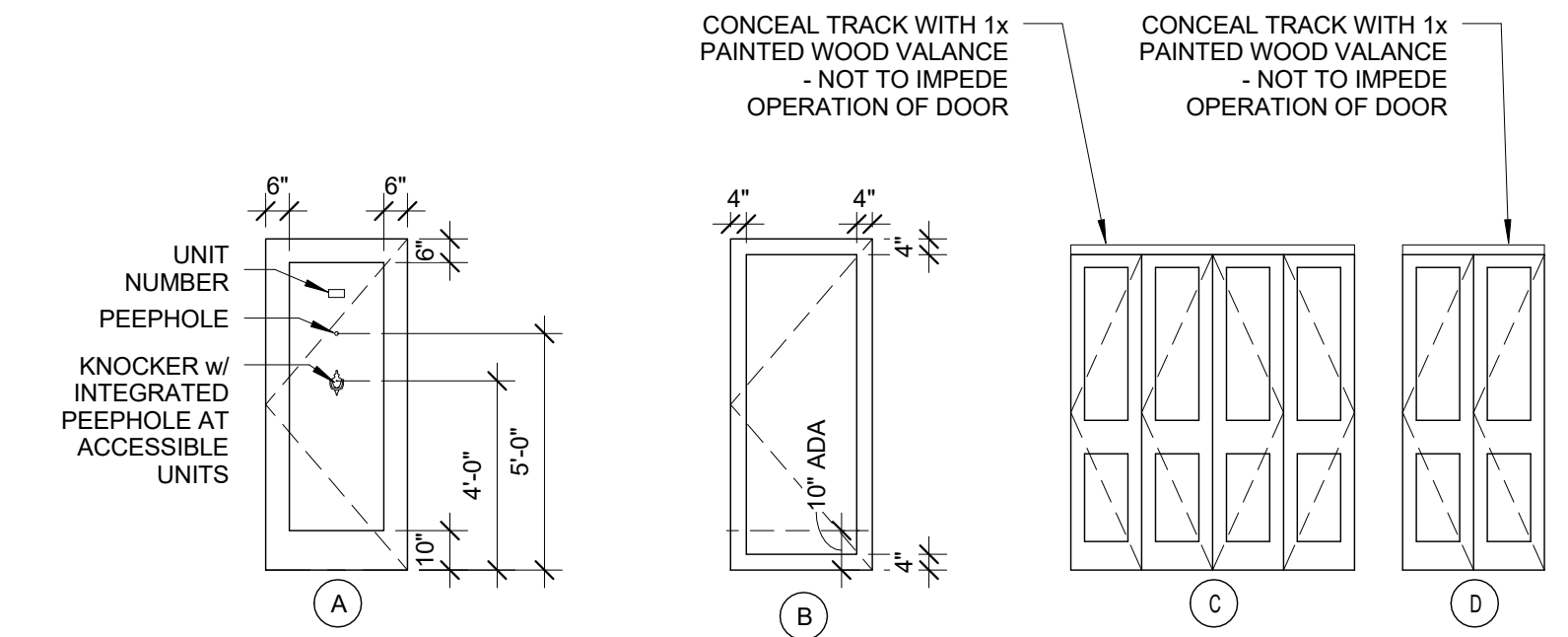
**NOTES**

- ALL DOORS ARE TO BE PAINT-GRADE, U.N.O.
- ALL DOOR SWEEPS TO BE CENTER-MORTISED
- ALL INTERIOR PUBLIC DOORS AND UNIT ENTRY DOORS TO BE EQUIPPED WITH SMOKESEALS
- ALL EXTERIOR DOORS TO BE EQUIPPED WITH WEATHERSTRIPPING
- ALL EXTERIOR DOORS TO HAVE 1x4 PVC TRIM AT EXT. JAMB AND 1x6 PVC TRIM AT EXT. HEAD

**UNIT DOOR SCHEDULE**

UNIT	W	H	THCK	TYPE	MATL	FINISH	FRAME THRESHOLD	MATL	FINISH	LABEL	OPER.	SWEEP	CL.	REMARKS
U1	3'-0"	7'-0"	1 3/4"	A	WD	PAINTED	ALUMINUM	HM	20	PAINTED	ENTRY			
U2	3'-0"	6'-8"	1 3/4"	B	SC	PAINTED	-	WD	-	PAINTED	PRIVACY			
U3	1'-6"	6'-8"	1 3/8"	B	SC	PAINTED	-	WD	-	PAINTED	PASSAGE			
U4	6'-0"	6'-8"	1 3/8"	C	SC	PAINTED	-	WD	-	PAINTED	-			
U5	5'-0"	6'-8"	1 3/8"	C	SC	PAINTED	-	WD	-	PAINTED	-			
U6	4'-0"	6'-8"	1 3/8"	C	SC	PAINTED	-	WD	-	PAINTED	-			
U7	3'-0"	6'-8"	1 3/8"	D	SC	PAINTED	-	WD	-	PAINTED	-			
U8	2'-10"	6'-8"	1 3/8"	D	SC	PAINTED	-	WD	-	PAINTED	-			
U9	2'-6"	6'-8"	1 3/8"	D	SC	PAINTED	-	WD	-	PAINTED	-			
U10	2'-0"	6'-8"	1 3/8"	B	SC	PAINTED	-	WD	-	PAINTED	PASSAGE			

**UNIT DOORS**



Prepared For:  
Westbrook Development Corp. & Millbrook Estates LLP  
P.O. Box 7486  
Portland, ME 04112

Architect:  
**ARCHETYPE** architects  
48 Union Wharf Portland, Maine 04101  
(207) 772-0022 ARCHETYPE@ARCHETYPEA.COM

Project:  
MILLBROOK ESTATES  
300 East Bridge Street  
Westbrook, ME 04092

Revisions:

Date: 10 AUG 2015  
Scale: As indicated  
**DOOR & WINDOW SCHEDULE**

**A8.01**