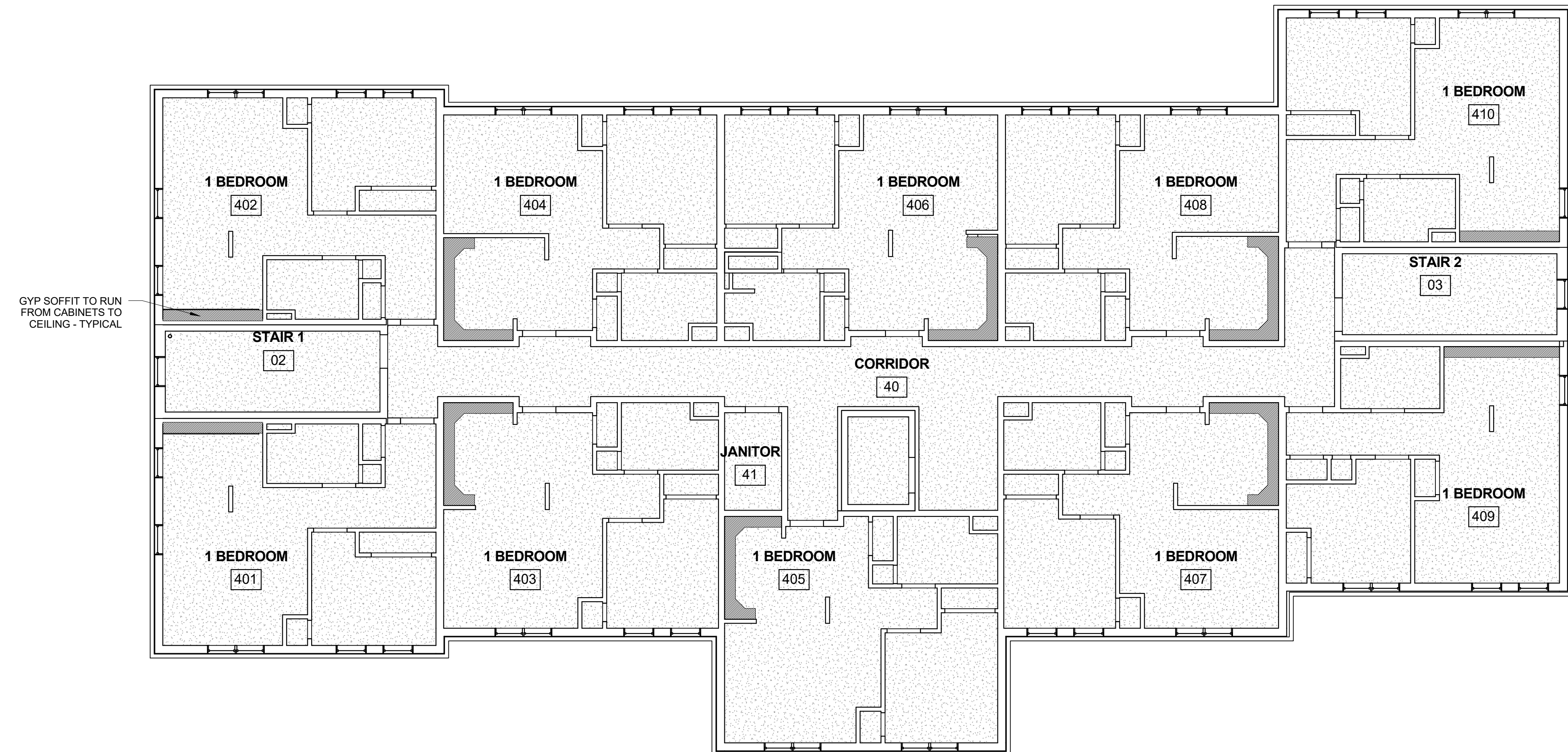


2 | 3RD FLOOR
1/8" = 1'-0"



1 | 4TH FLOOR
1/8" = 1'-0"

Date: 10 AUG 2015	Scale: 1/8" = 1'-0"	REFLECTED CEILING PLANS - 3RD AND 4TH FLOOR	Revisions:
			Project: MILLBROOK ESTATES 300 East Bridge Street Westbrook, ME 04092
Architect: ARCHETYPE architects 48 Union Wharf Portland, Maine 04101 (207) 772-6022 ARCHETYPE@ARCHETYPEPA.COM	Consultant:	Prepared For: Westbrook Development Corp. & Millbrook Estates LLP	

A7.02