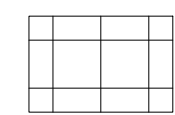
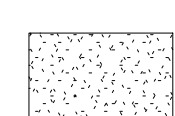
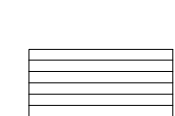
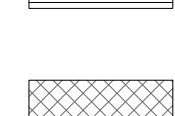
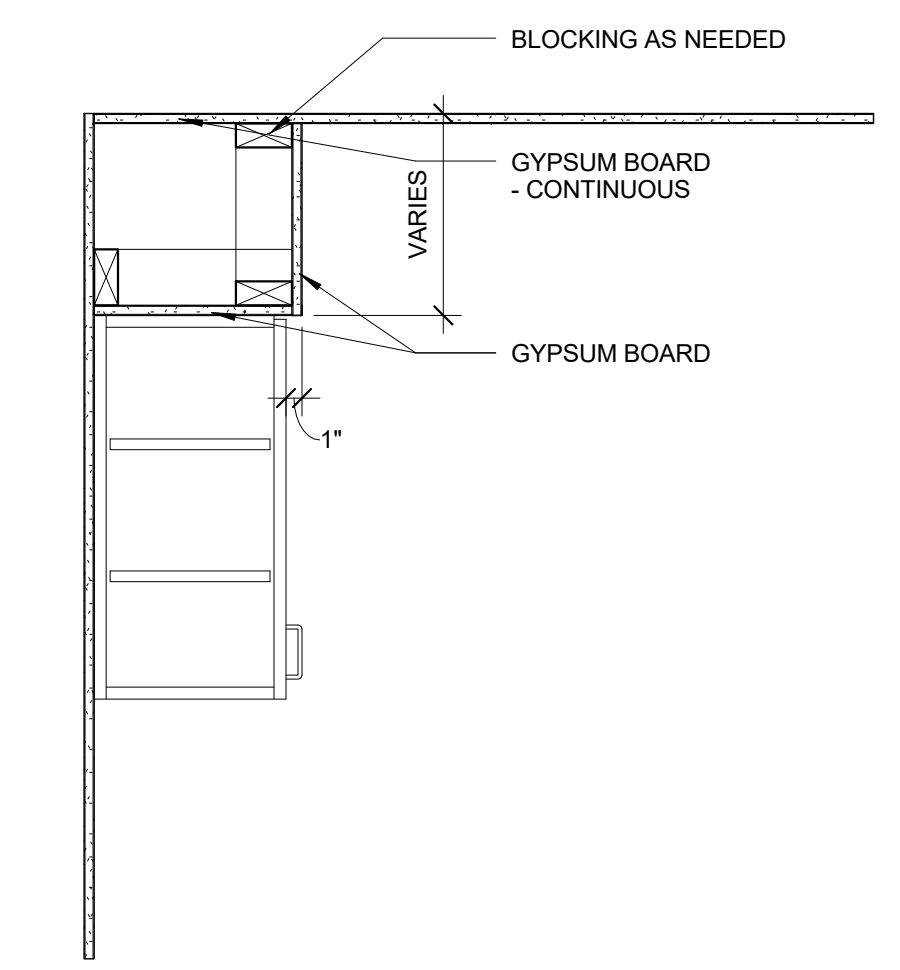


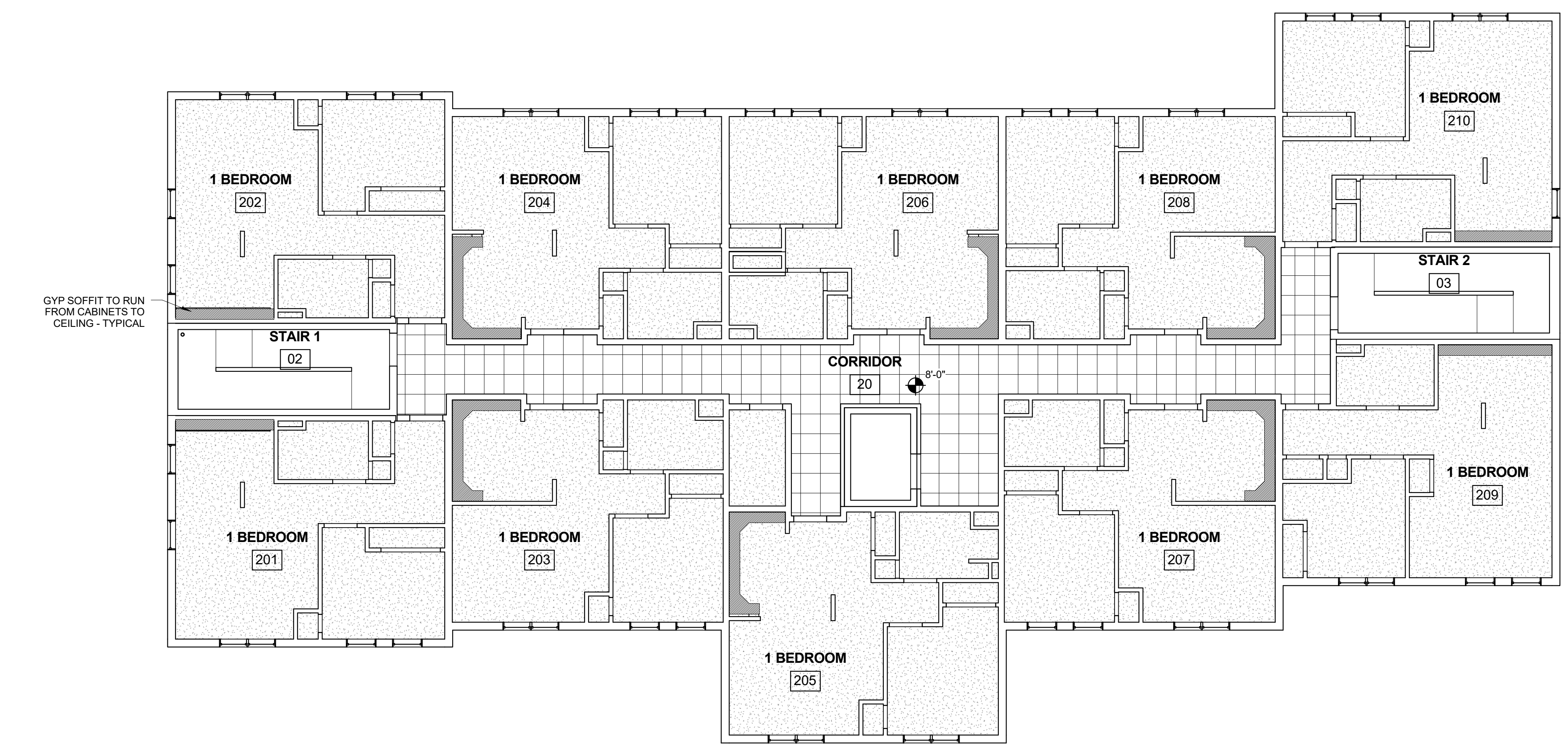
1 | 1ST FLOOR  
1/8" = 1'-0"

-  = ACOUSTICAL CEILING TILE
-  = GYP CEILING
-  = T&G PINE BEAD BOARD
-  = 2 LAYERS GYP. CEILING TYPE C1

REFLECTED CEILING PLAN - LEGEND  
1/8" = 1'-0"



3 | SOFFIT AT WALL CABINET  
1" = 1'-0"



2 | 2ND FLOOR  
1/8" = 1'-0"

Prepared For:  
Westbrook Development  
Corp. & Millbrook Estates  
LLP  
Address  
City, State

Consultant:  
**ARCHETYPE**  
architects  
48 Union Wharf Portland, Maine 04101  
(207) 772-6022 ARCHETYPE@ARCHETYPEPA.COM

Project:  
MILLBROOK ESTATES  
300 East Bridge Street  
Westbrook, ME 04092

Date: 10 AUG 2015  
Scale: As indicated  
REFLECTED CEILING  
PLANS - FIRST AND  
SECOND FLOOR

A7.01