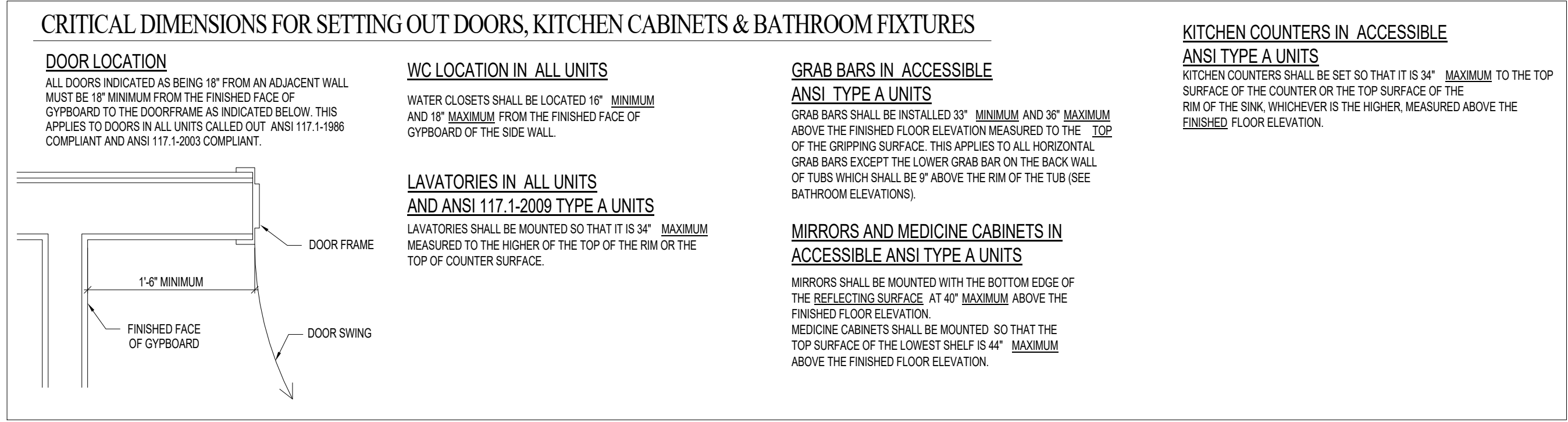
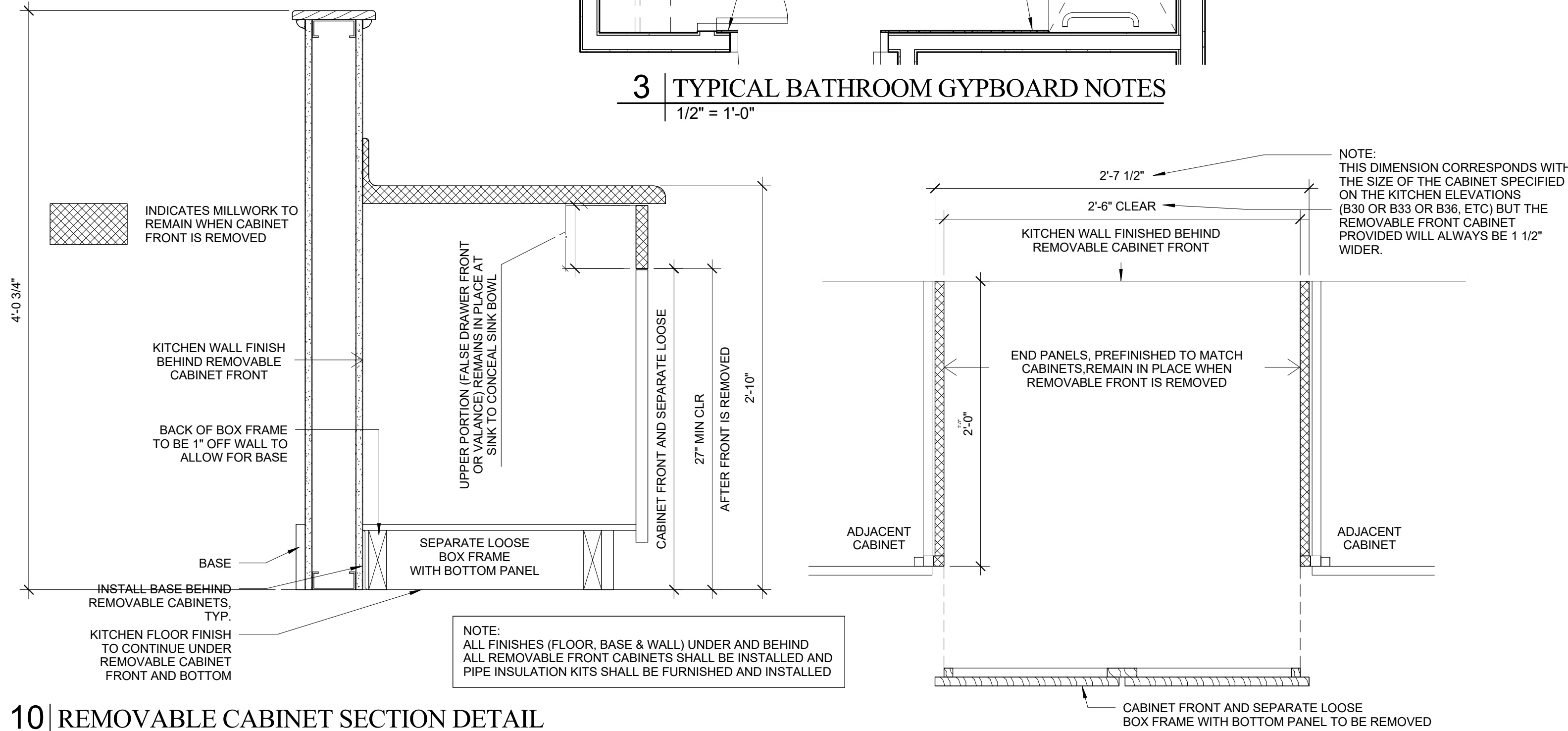


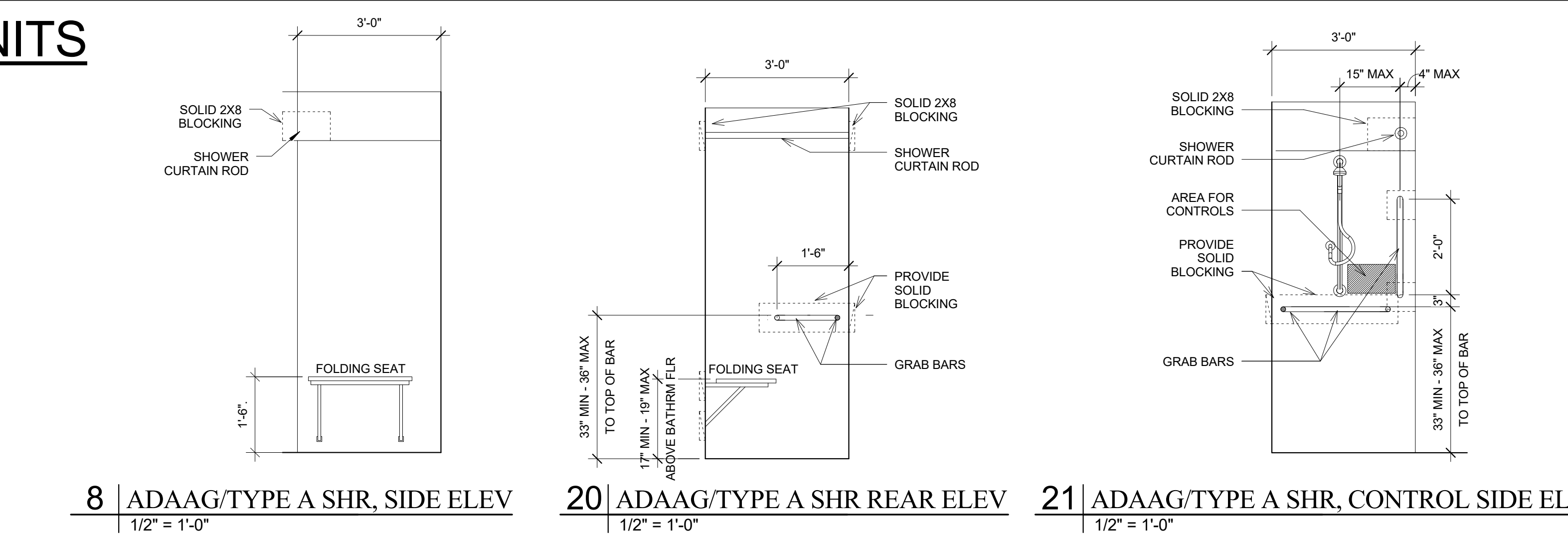
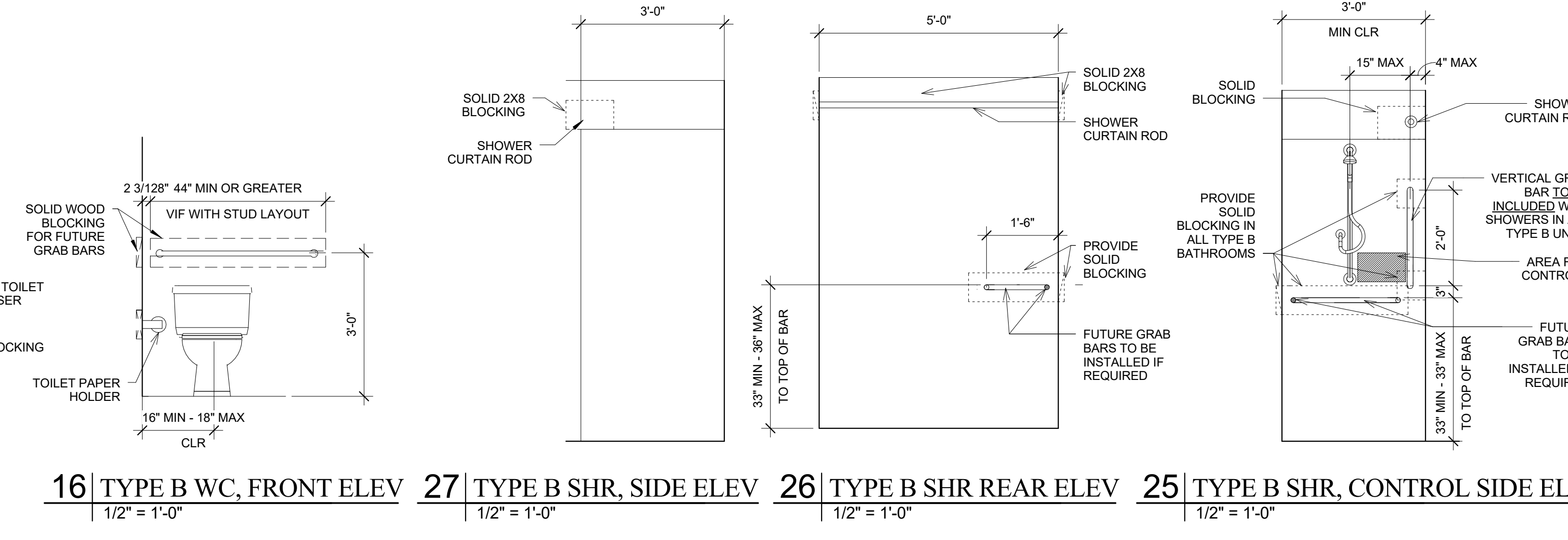
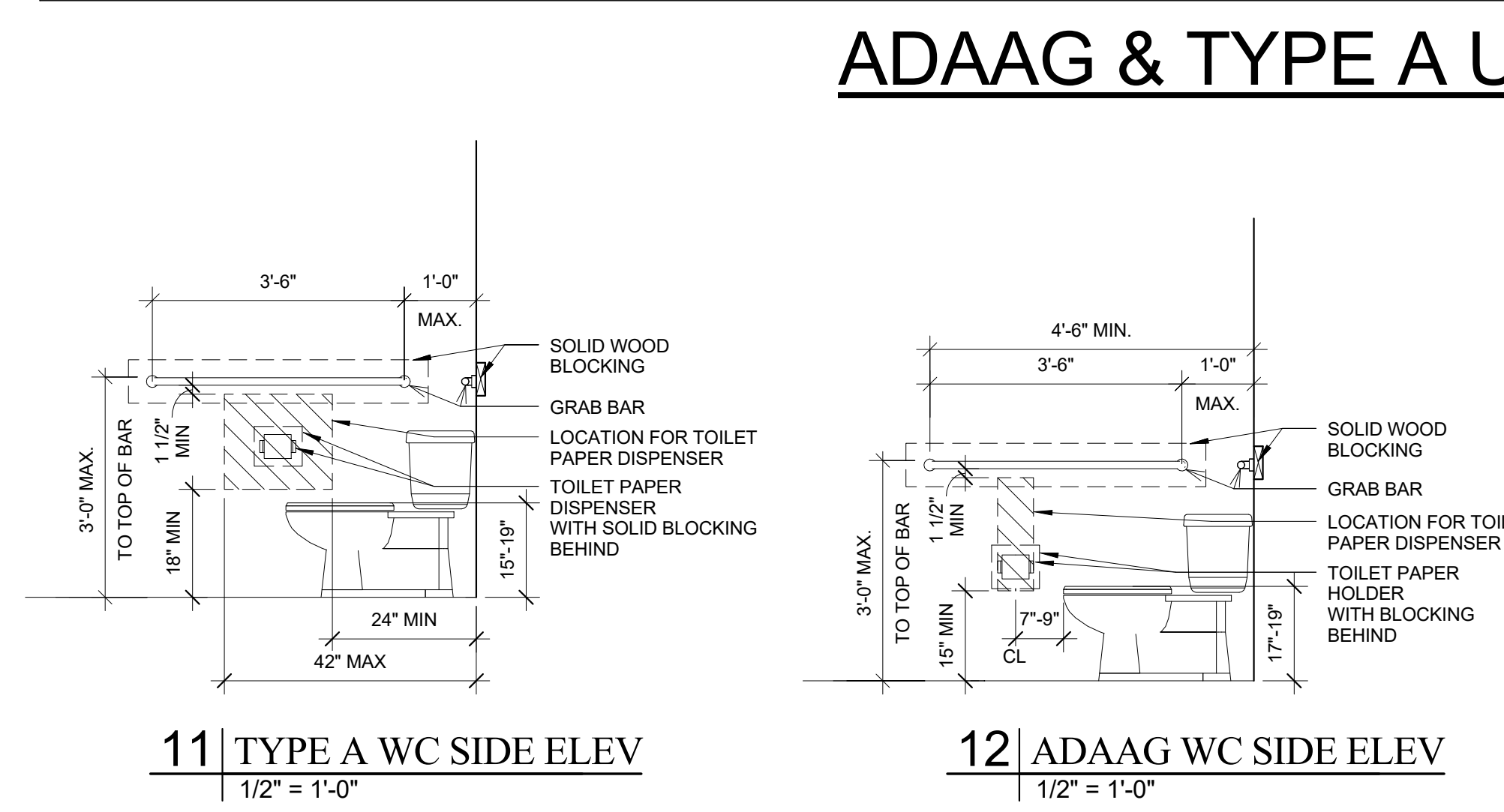
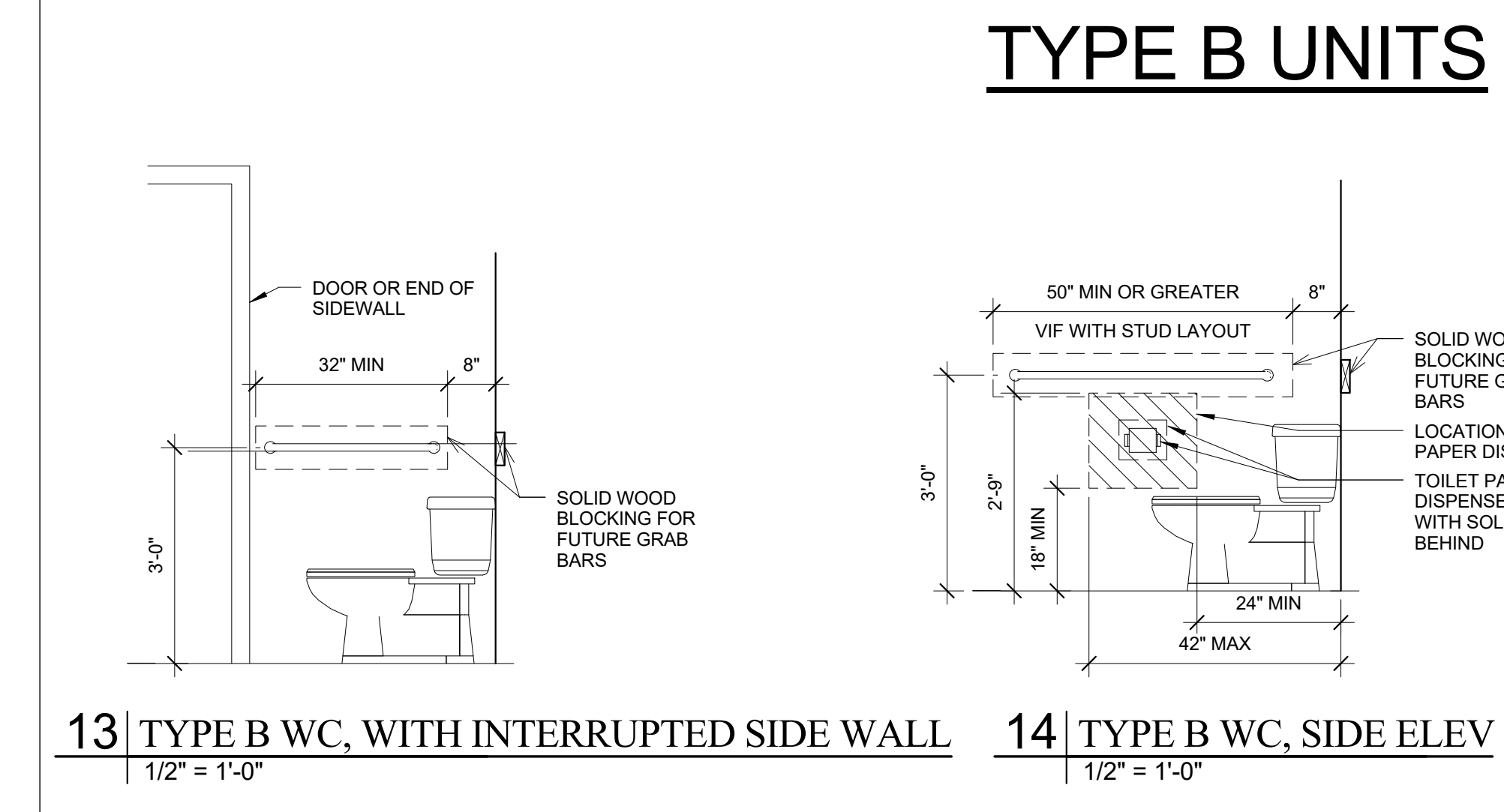
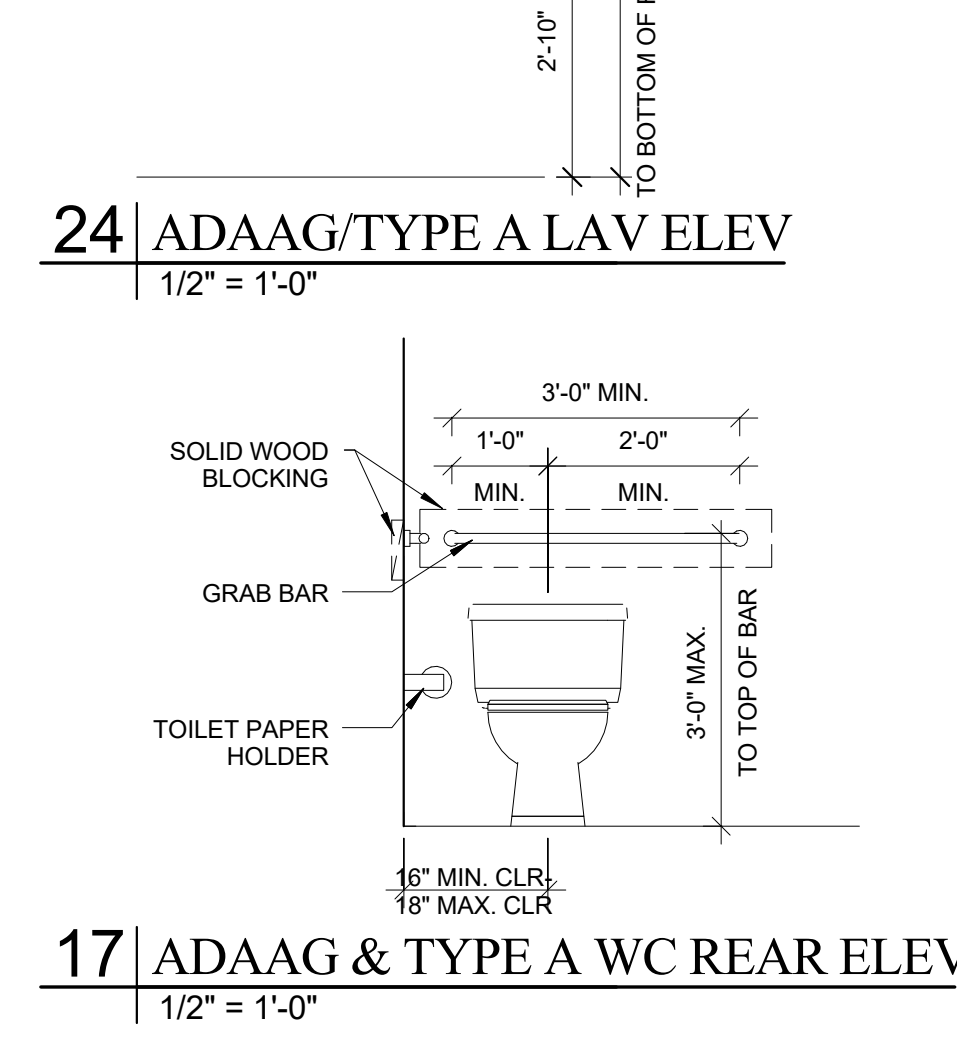
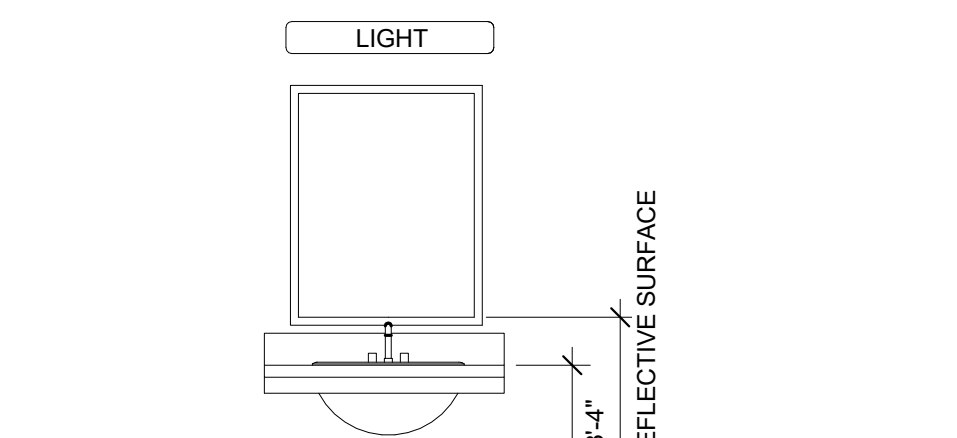
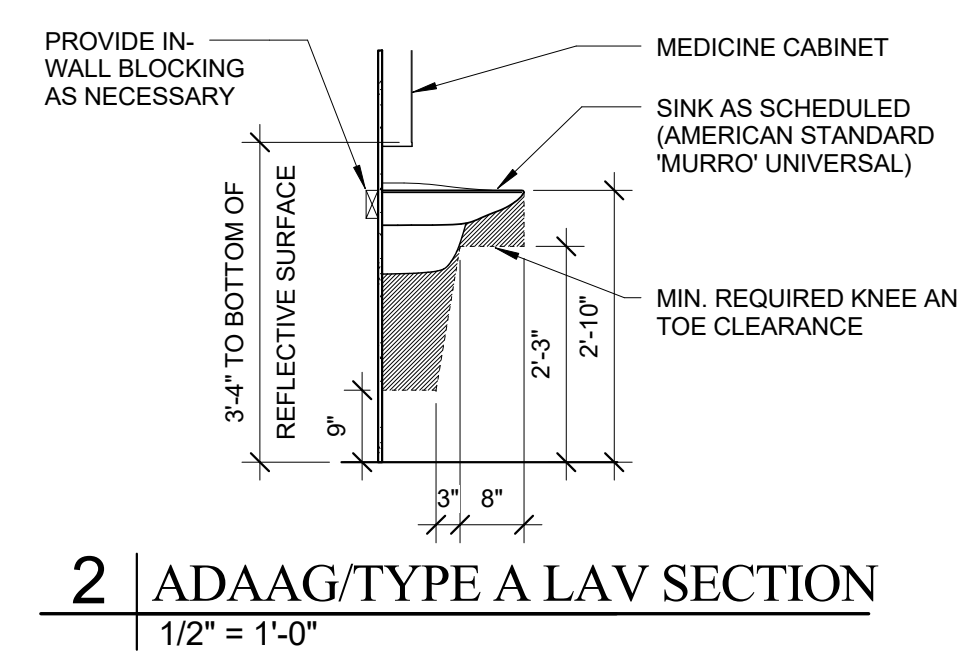
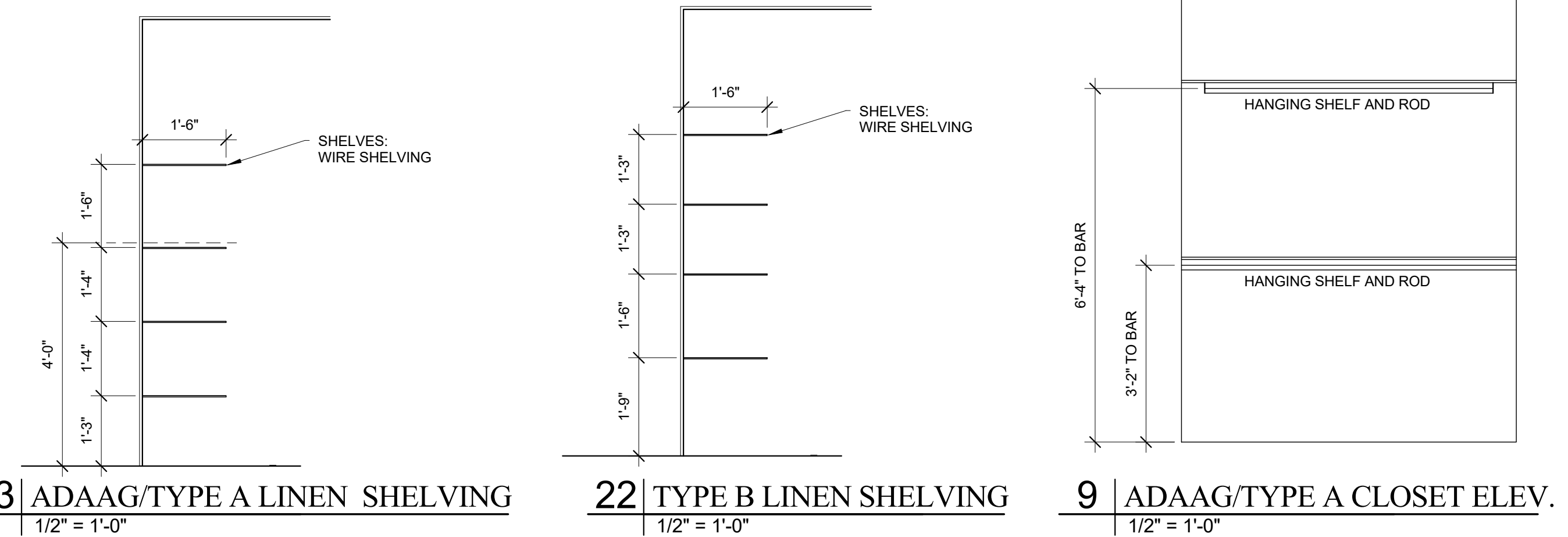
3 TYPICAL BATHROOM GYPBOARD NOTES
1/2" = 1'-0"



1 CRITICAL DIMENSIONS
1" = 1'-0"



10 REMOVABLE CABINET SECTION DETAIL
1 1/2" = 1'-0"



Prepared For:
Westbrook Development Corp. & Millbrook Estates LLP

Consultant:
ARCHETYPE architects
48 Union Wharf Portland, Maine 04101
(207) 772-6022 ARCHETYPE@ARCHETYPEA.COM

Architect:
MILLBROOK ESTATES
300 East Bridge Street
Westbrook, ME 04092

Project:
MILLBROOK ESTATES

Revisions:
Date: 10 AUG 2015
Scale: As indicated
UNIT PLANS
A6.05