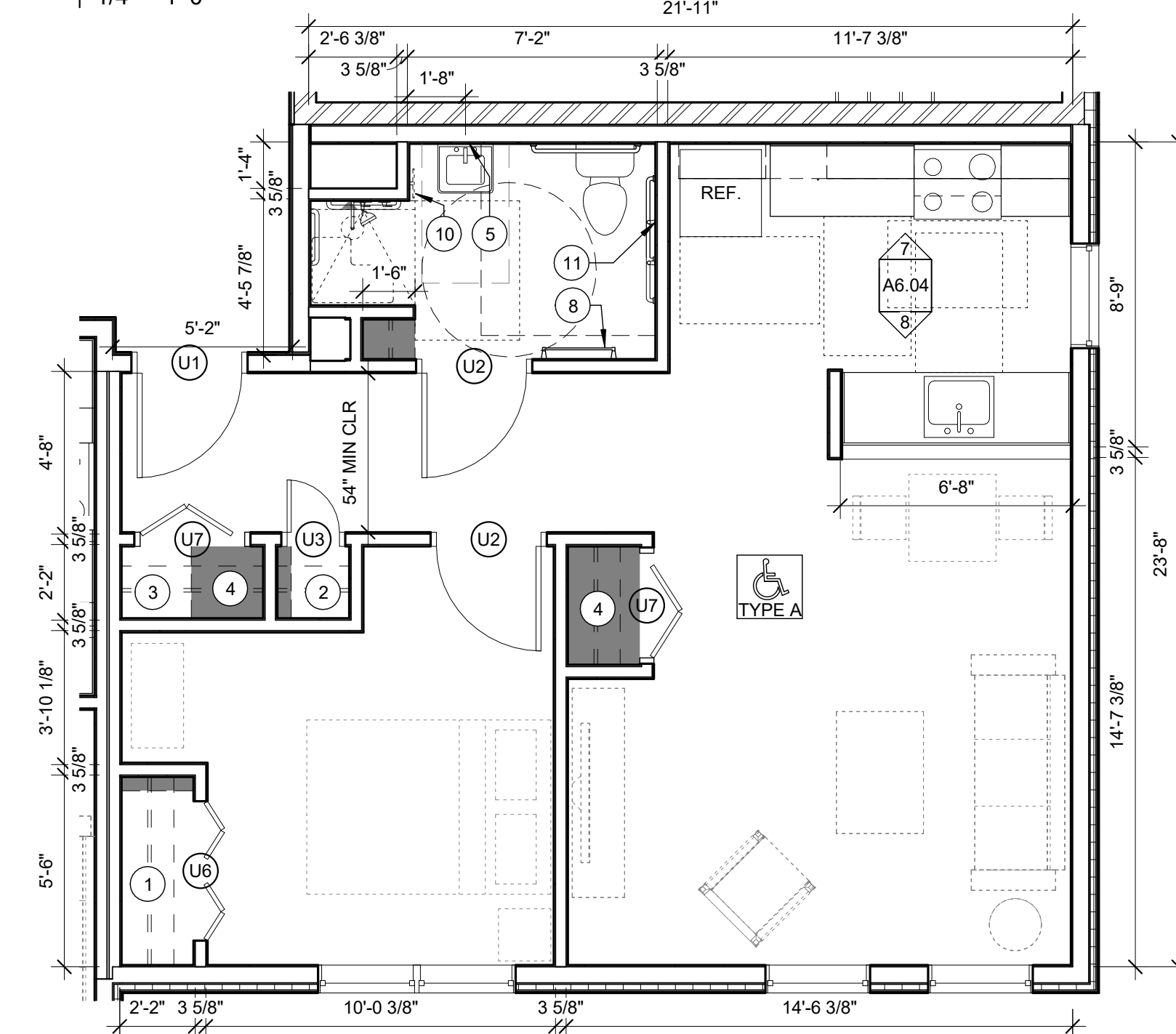
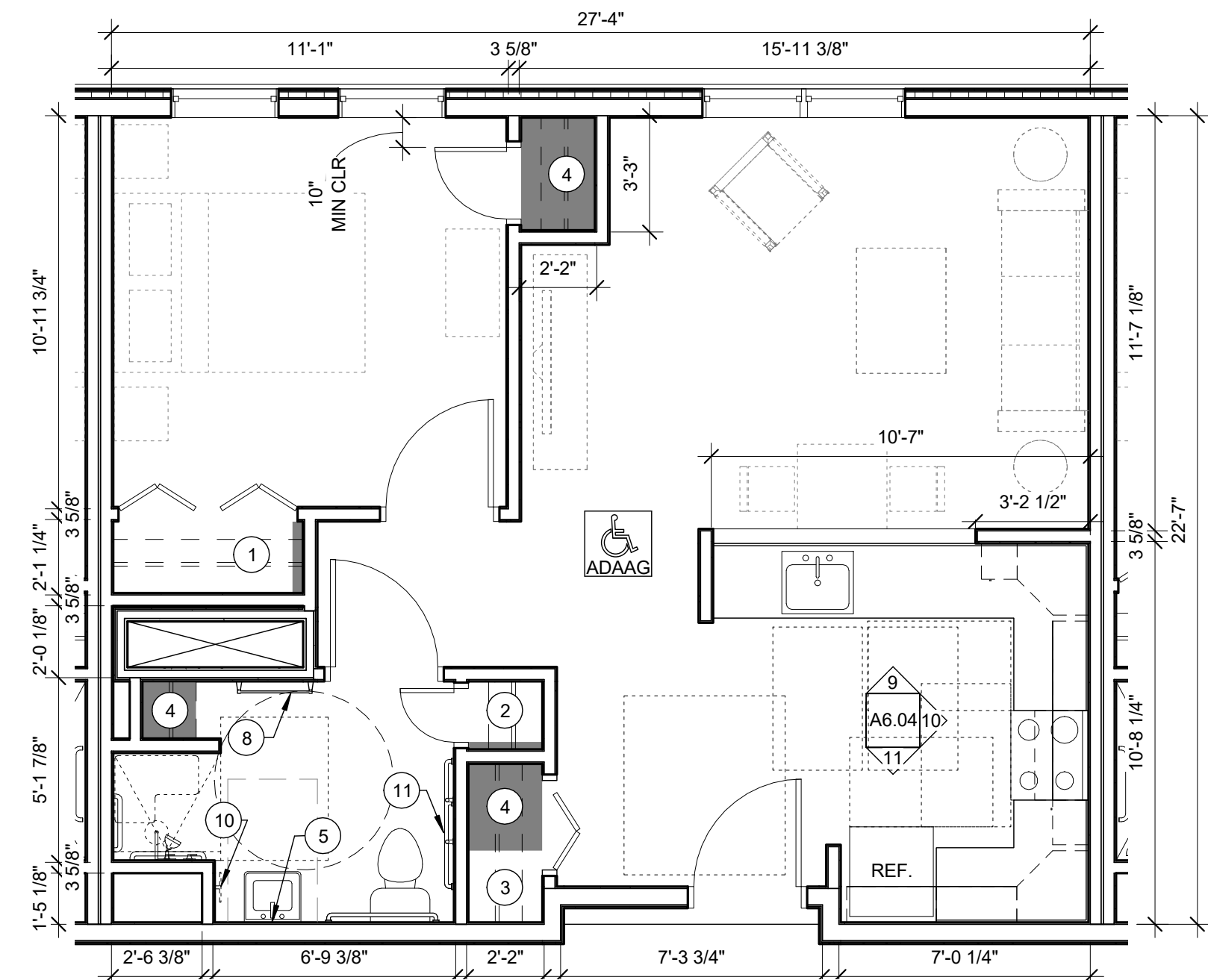


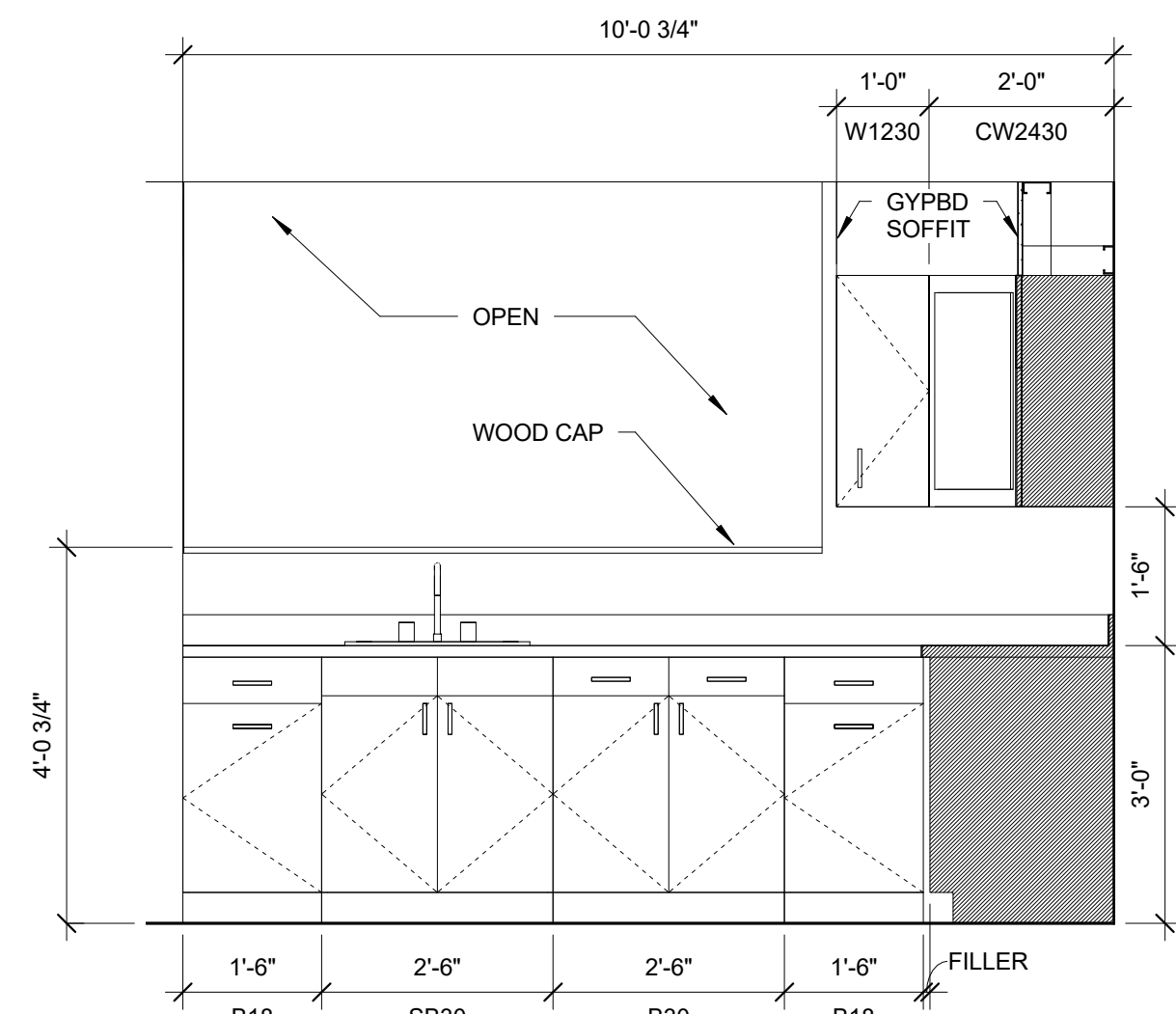
1 UNIT TYPE 13 (UNITS 305, 405)
1/4" = 1'-0"



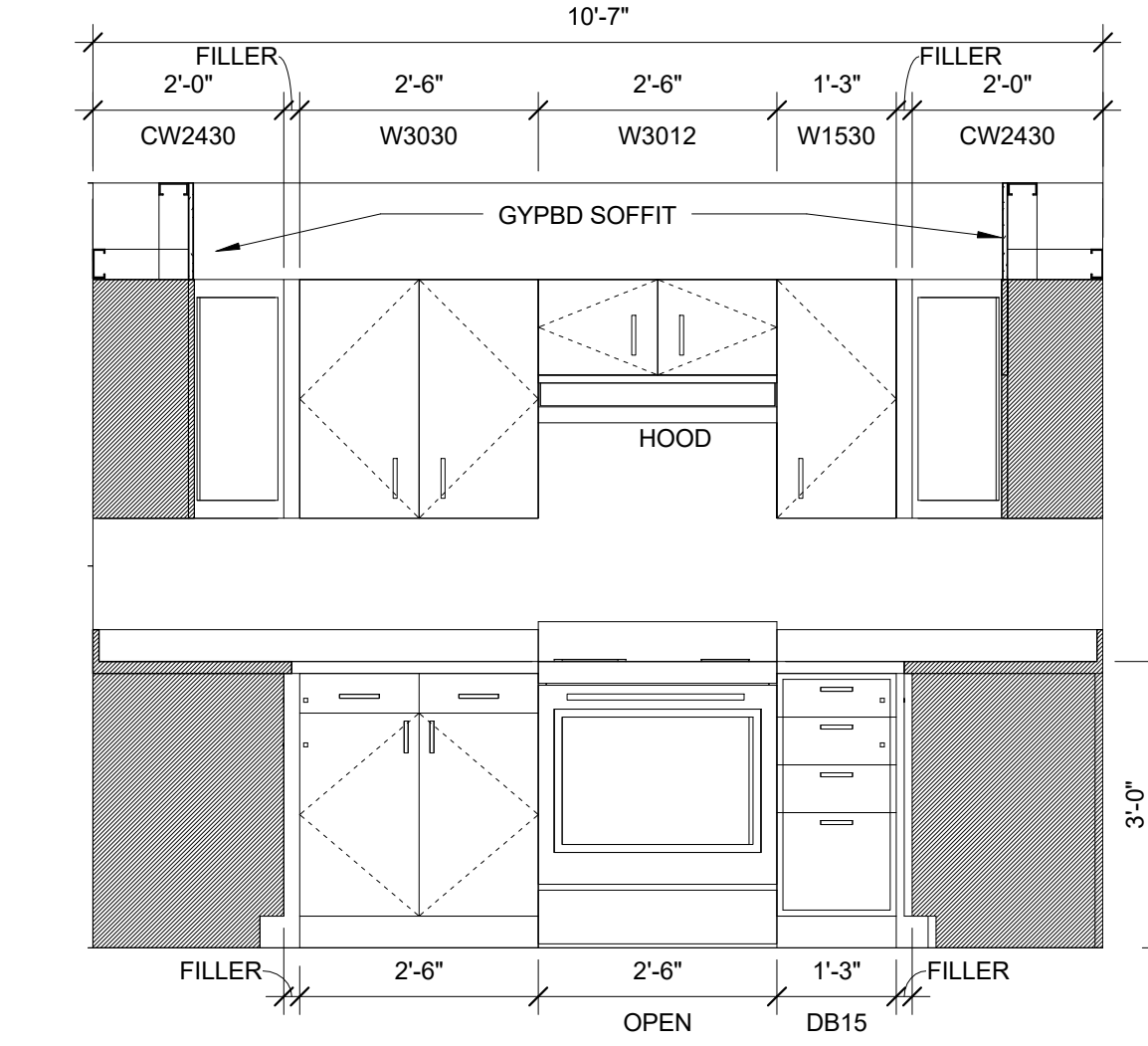
2 UNIT TYPE 14 (UNIT 309)
1/4" = 1'-0"



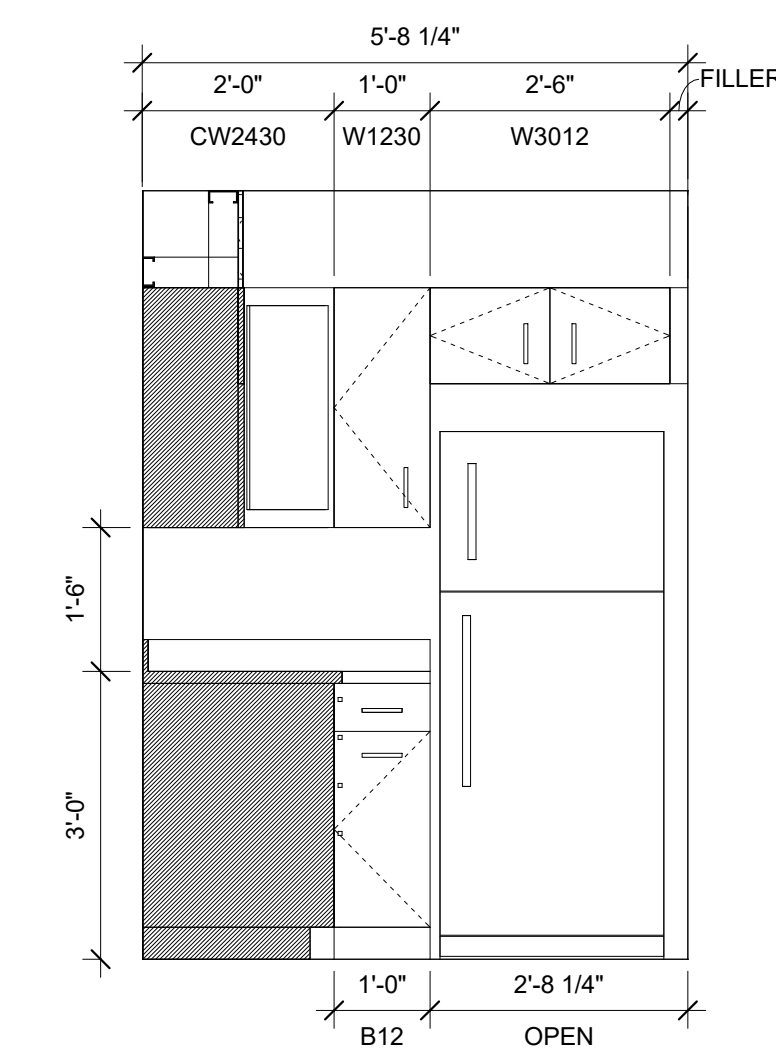
3 UNIT TYPE 15 (UNIT 406)
1/4" = 1'-0"



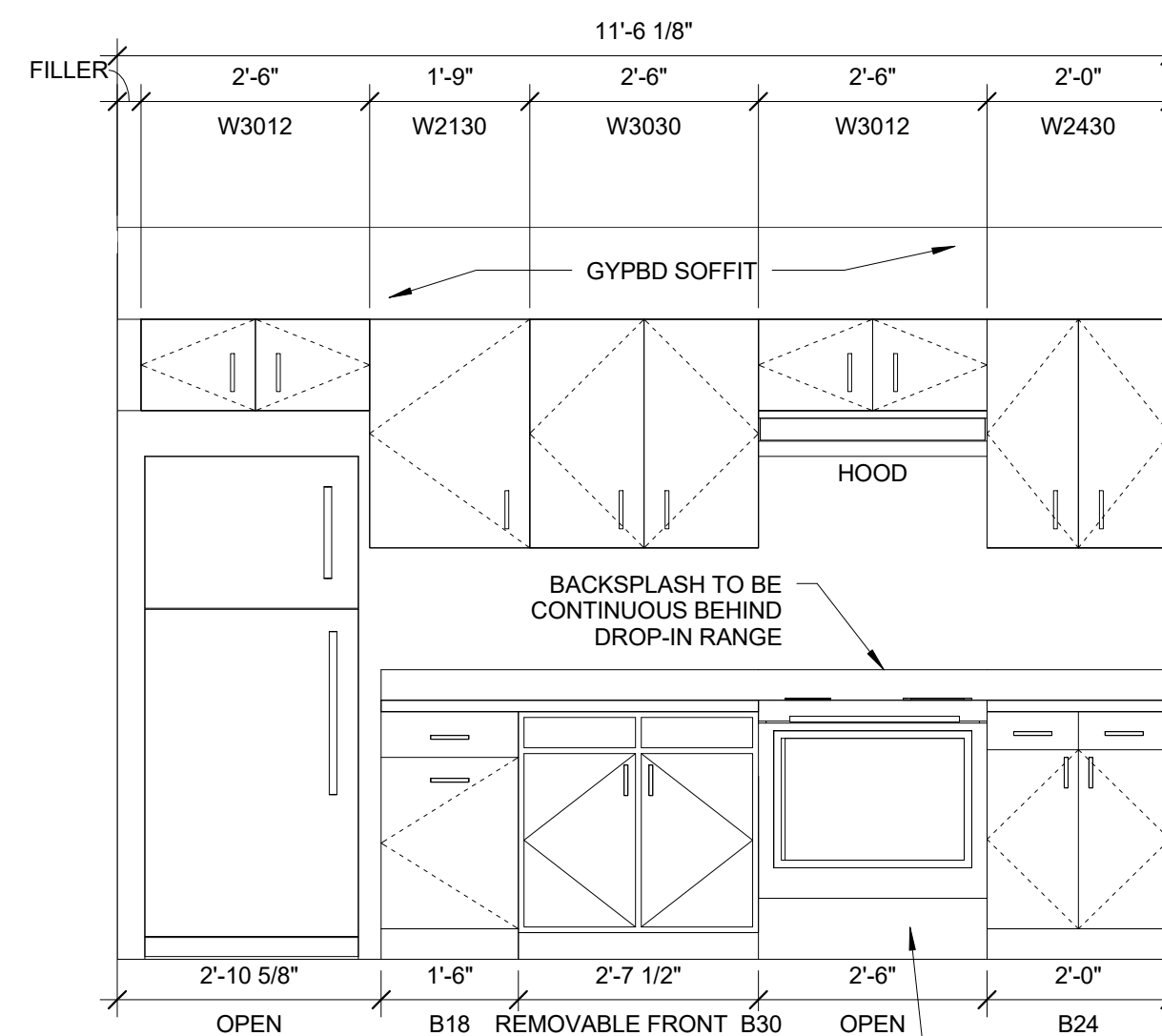
4 UNIT TYPE 13 KITCHEN ELEV
1/2" = 1'-0"



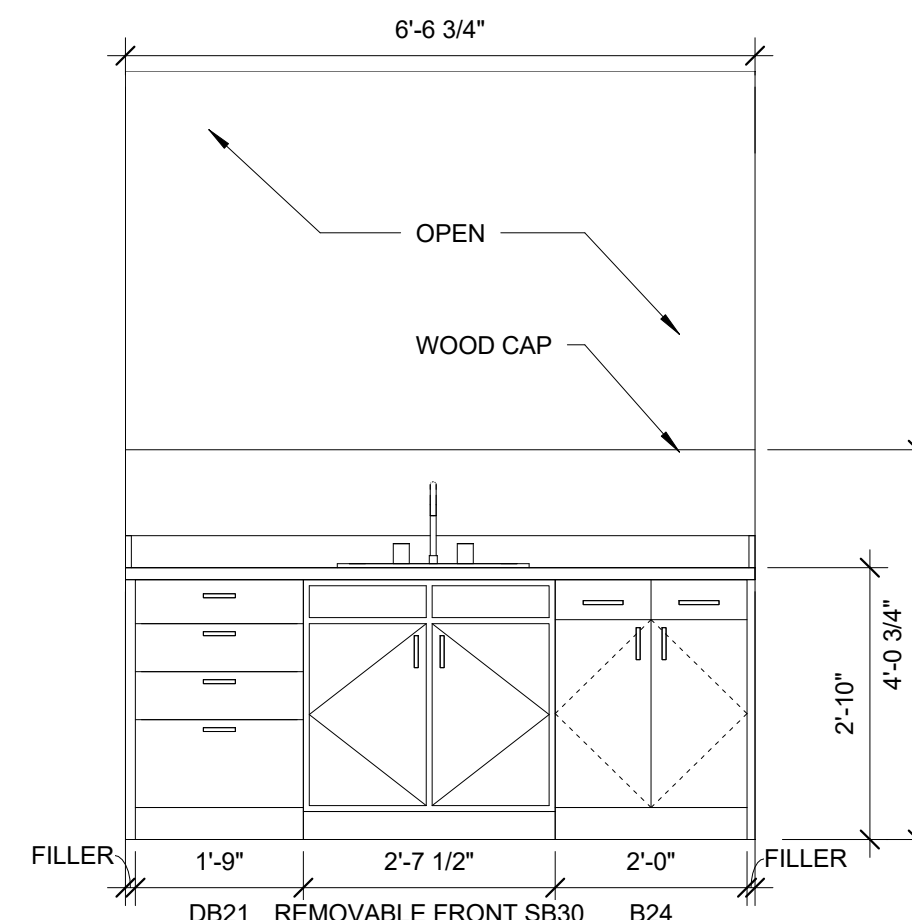
5 UNIT TYPE 13 KITCHEN ELEV.
1/2" = 1'-0"



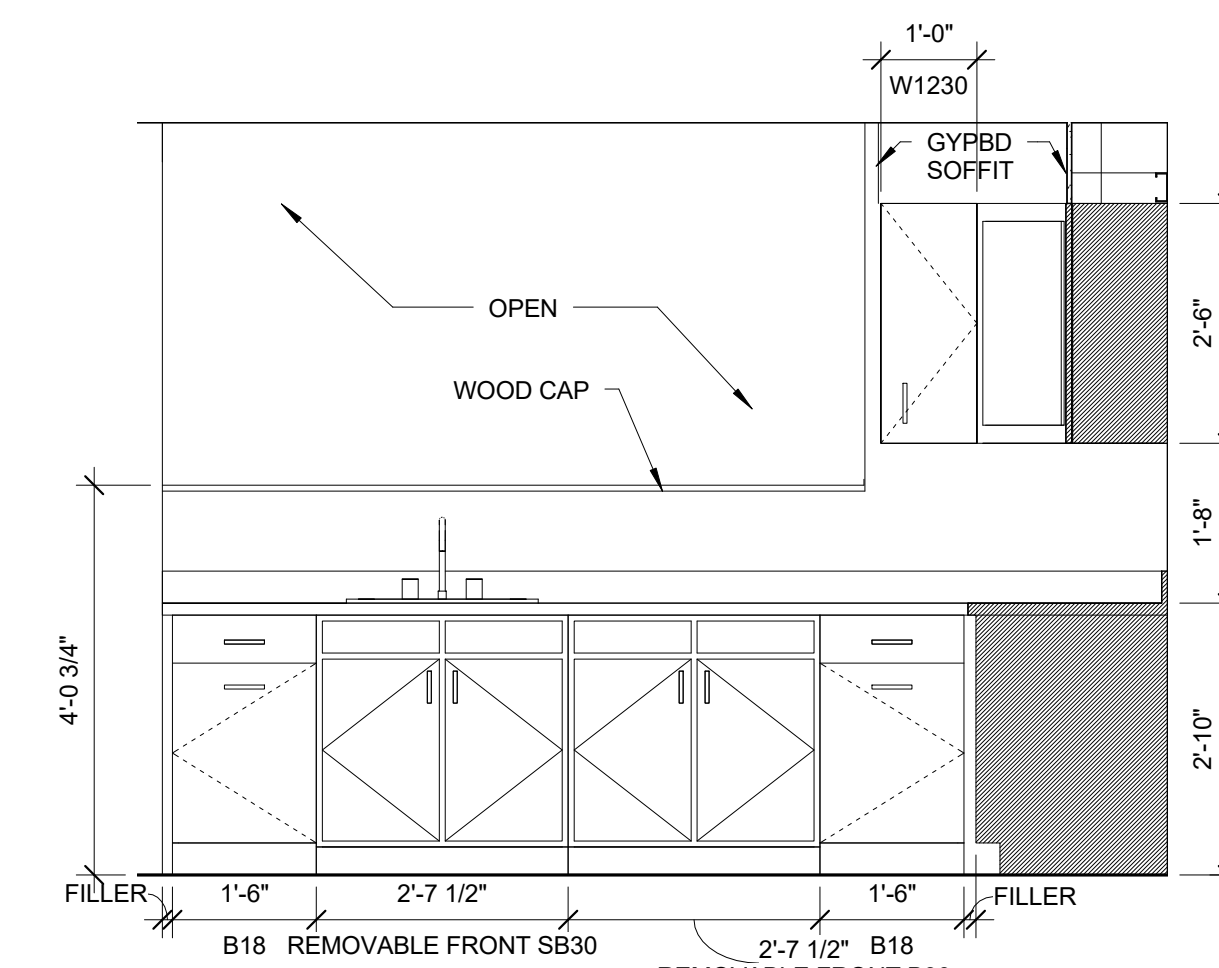
6 UNIT TYPE 13 KITCHEN ELEV.
1/2" = 1'-0"



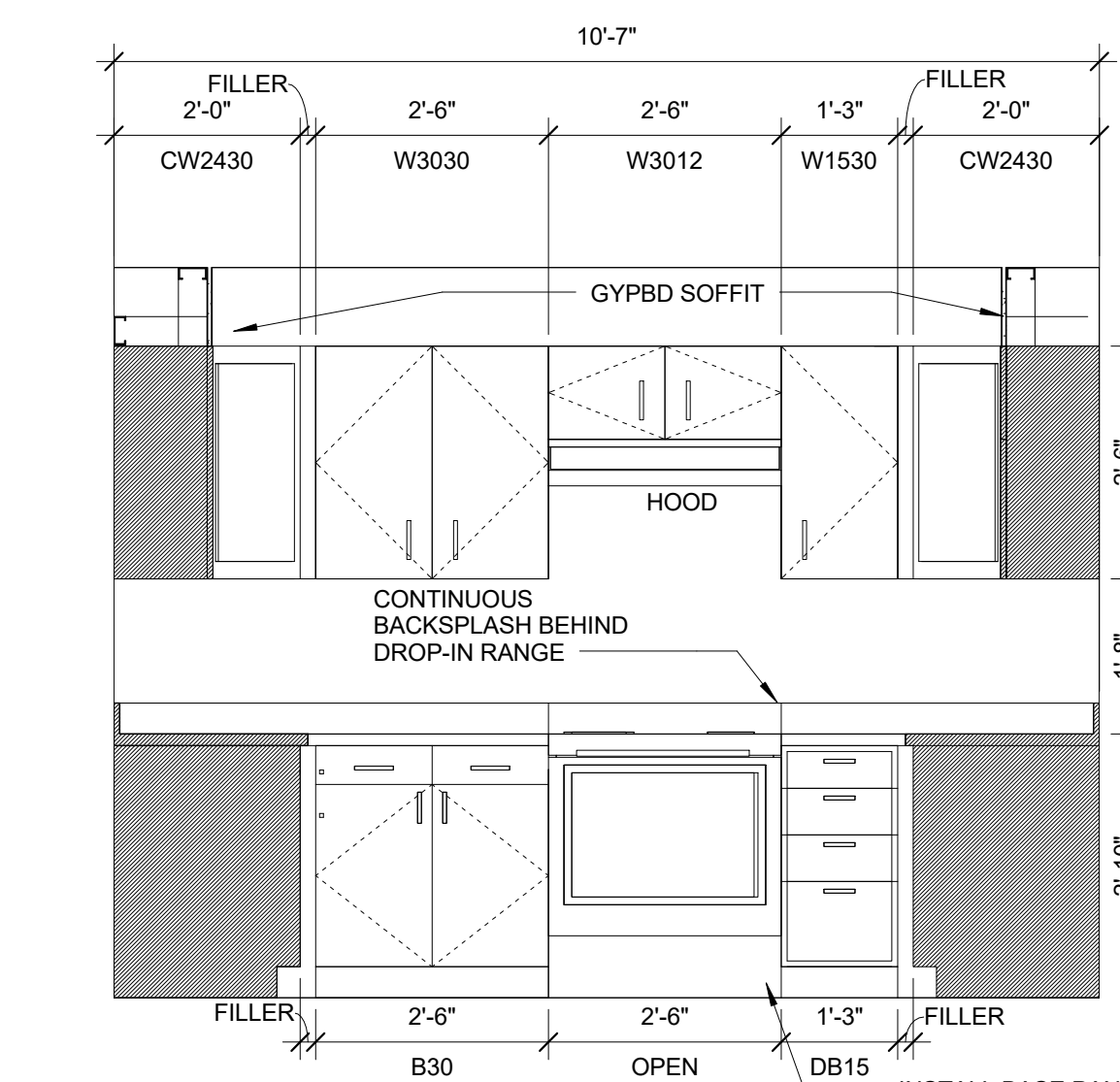
7 UNIT TYPE 14 KITCHEN ELEV
1/2" = 1'-0"



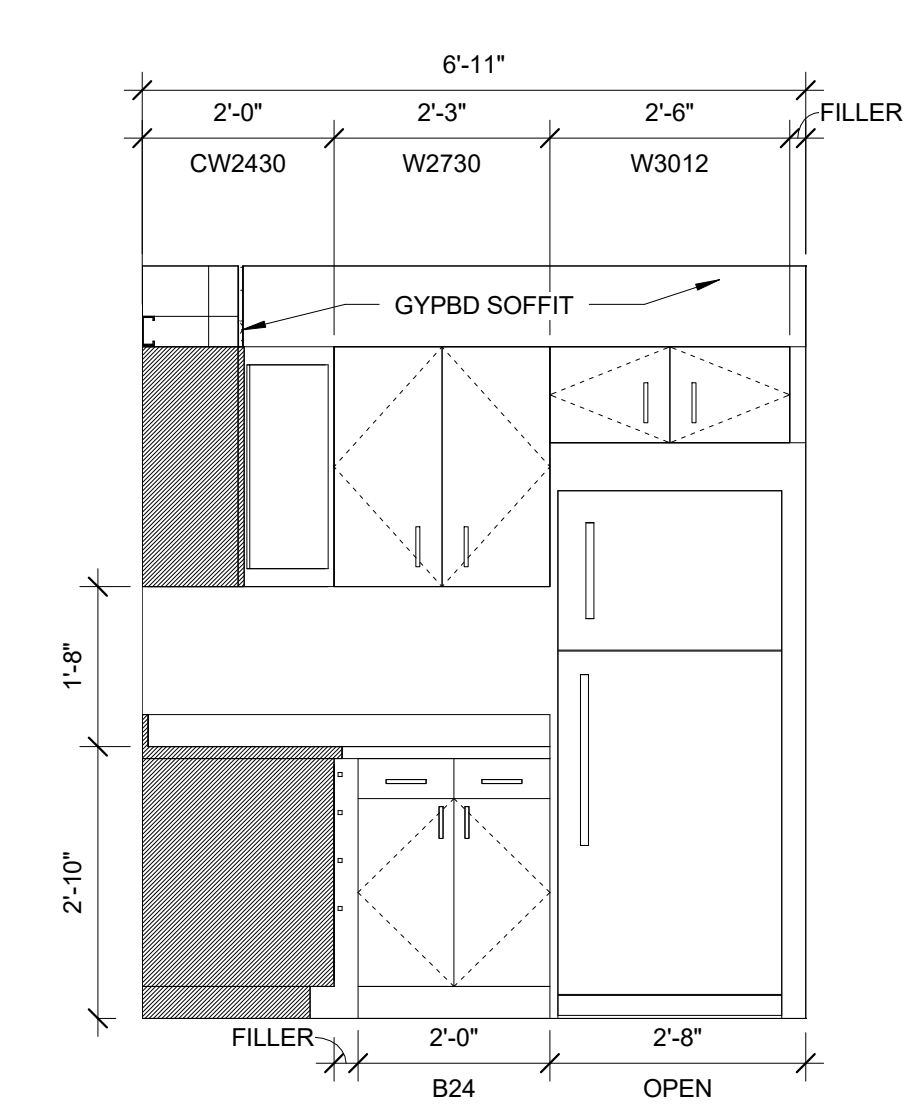
8 UNIT TYPE 14 KITCHEN ELEV.
1/2" = 1'-0"



9 UNIT TYPE 15 KITCHEN ELEV.
1/2" = 1'-0"



10 UNIT TYPE 15 KITCHEN ELEV.
1/2" = 1'-0"



11 UNIT TYPE O KITCHEN ELEV 3
1/2" = 1'-0"

Prepared For:
Westbrook Development
Corp. & Millbrook Estates
LLP

Consultant:

ARCHETYPE
architects
48 Union Wharf Portland, Maine 04101
(207) 772-6022 ARCHETYPE@ARCHETYPEPA.COM

Architect:

MILLBROOK ESTATES
300 East Bridge Street
Westbrook, ME 04092

Project:

Revisions:

Date: 10 AUG 2015
Scale: As indicated

UNIT PLANS

A6.04