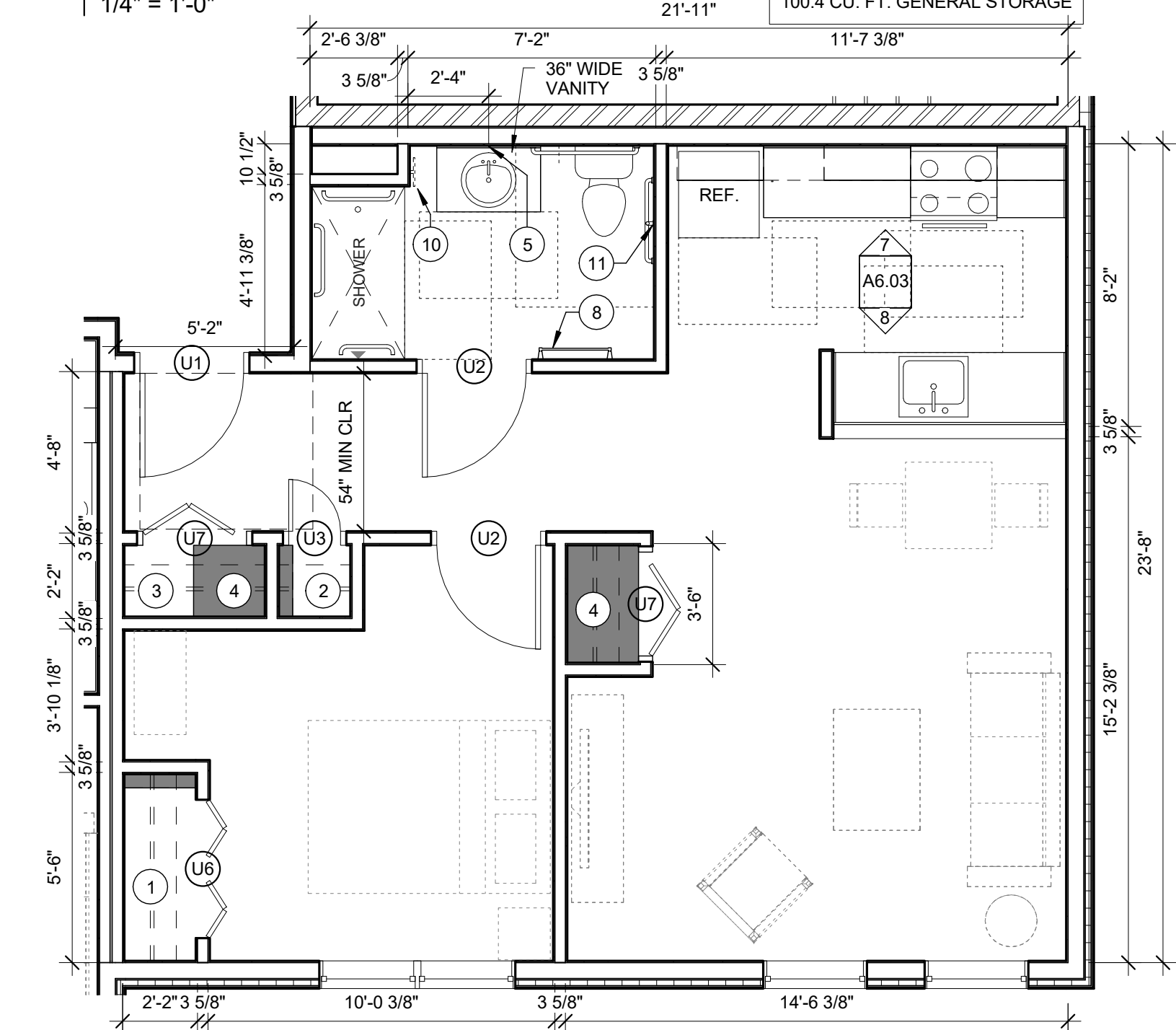
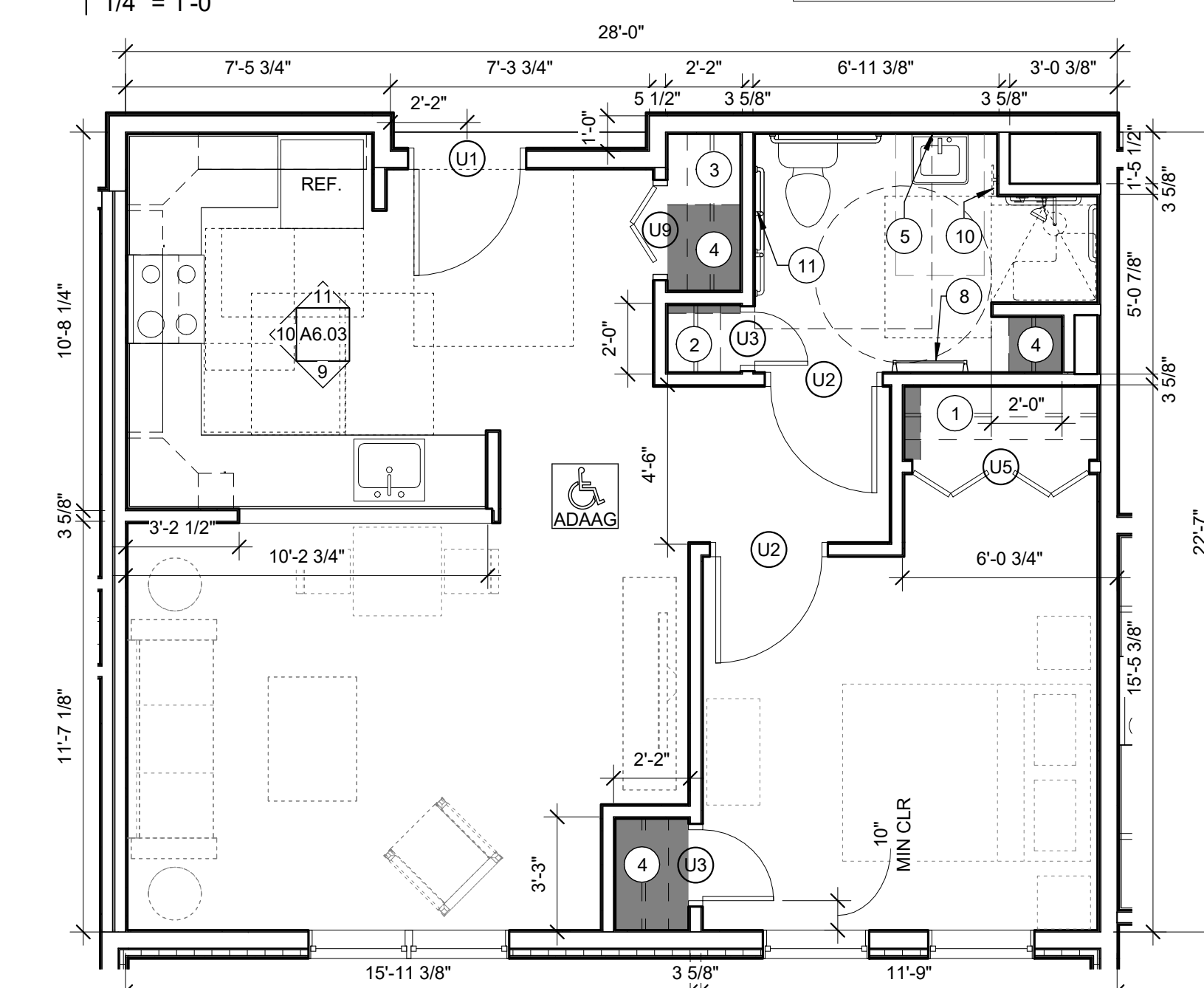


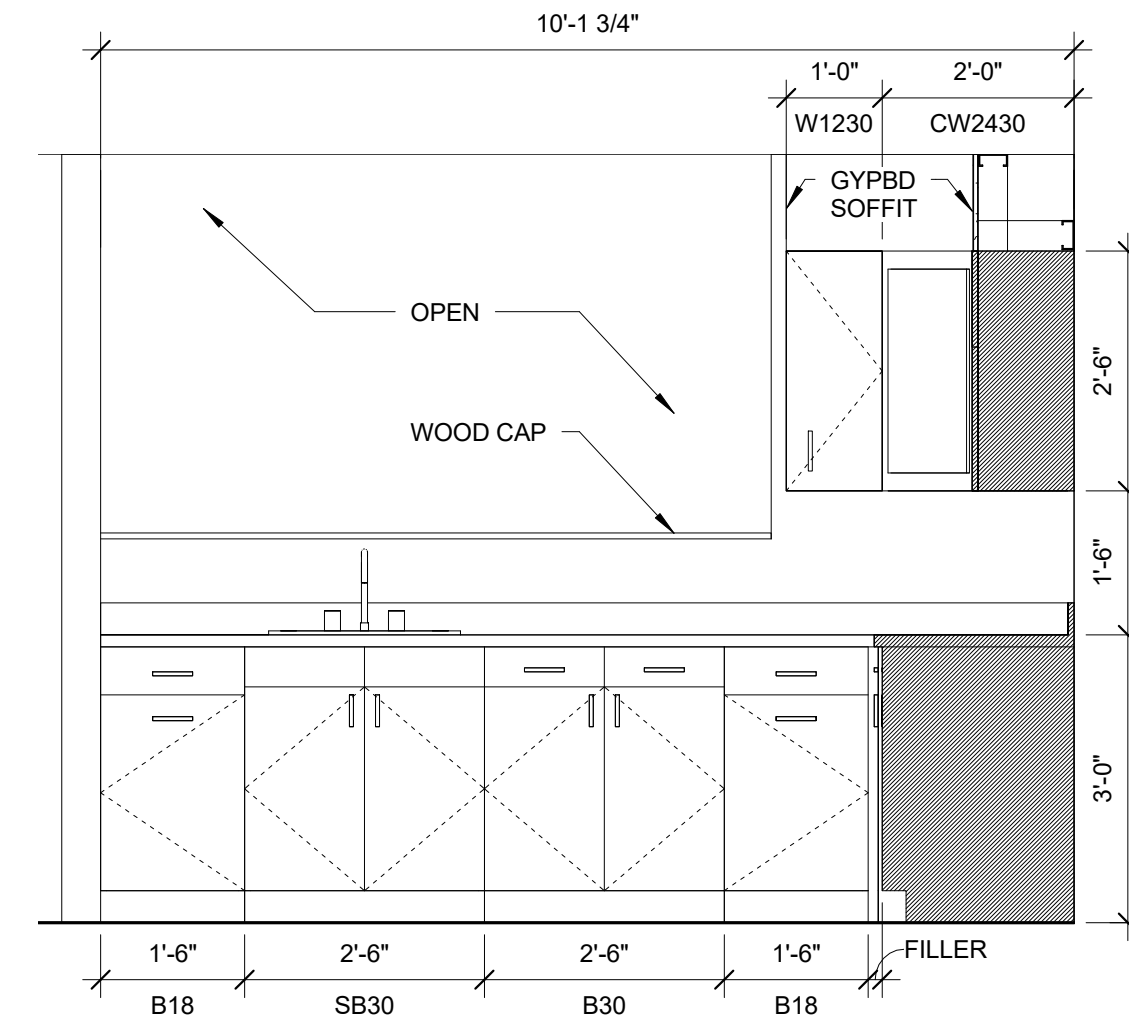
**1 UNIT TYPE 10 (UNITS 206,306)**  
1/4" = 1'-0"



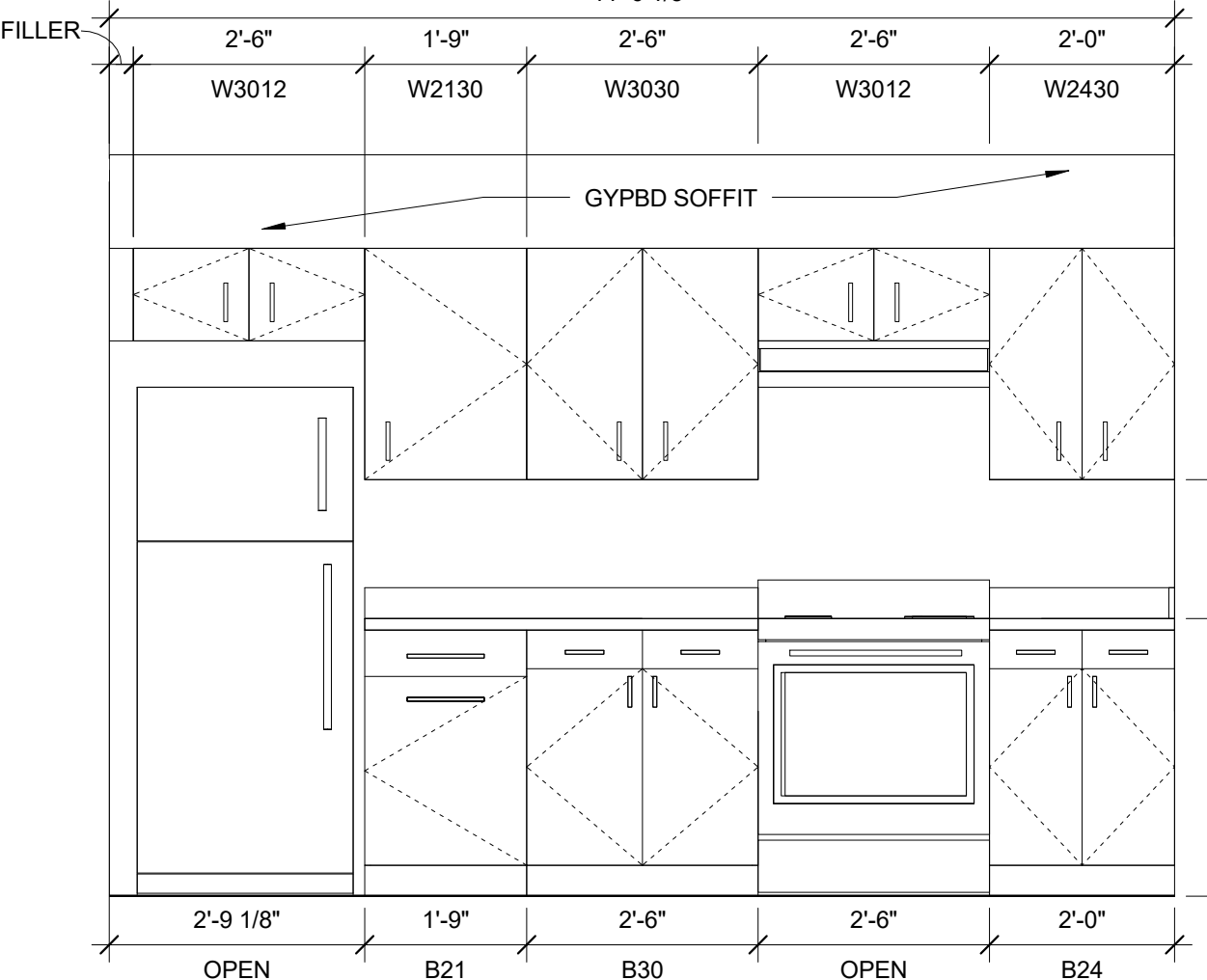
**2 UNIT TYPE 11 (UNITS 209, 409)**  
1/4" = 1'-0"



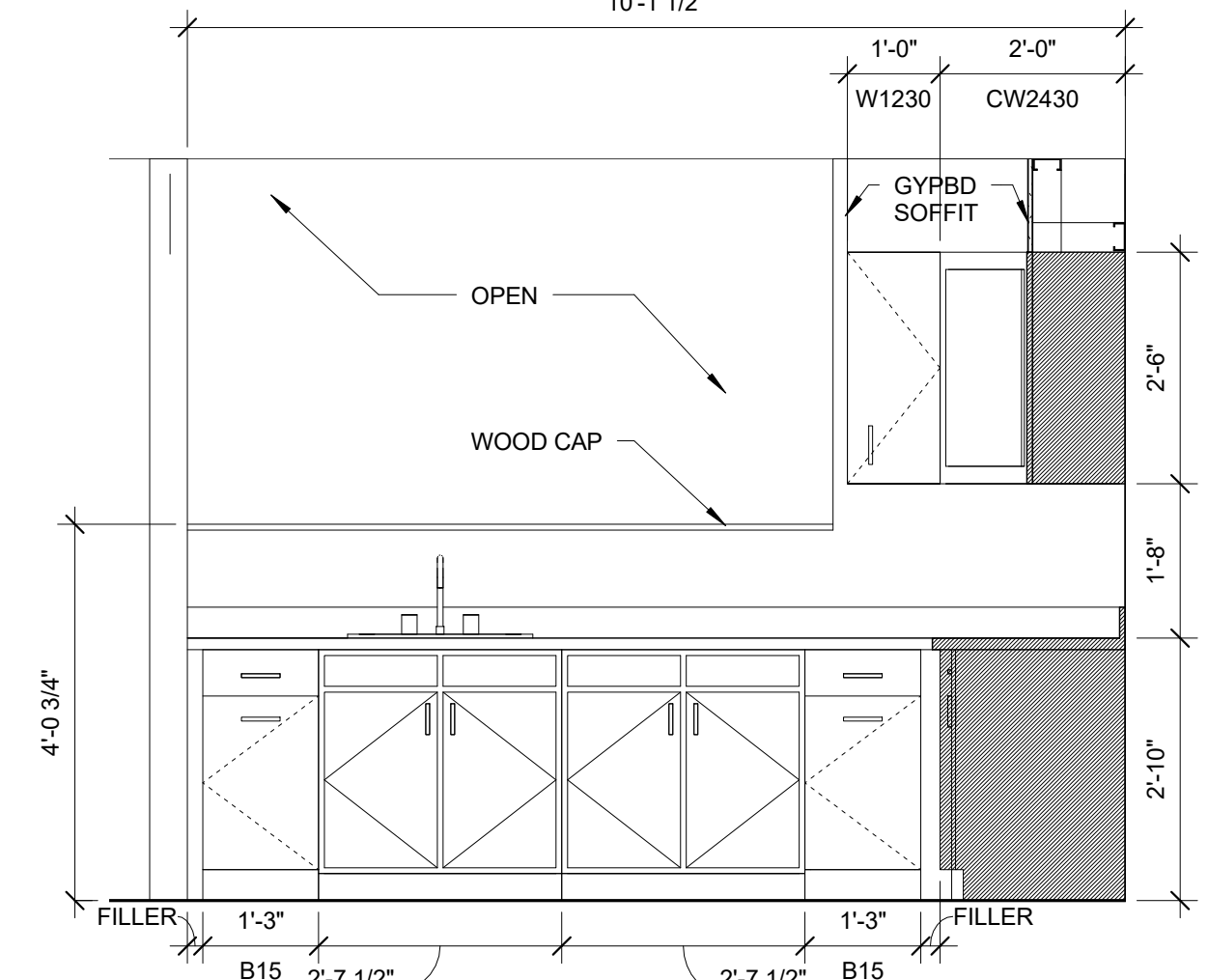
**3 UNIT TYPE 12 (UNIT 303)**  
1/4" = 1'-0"



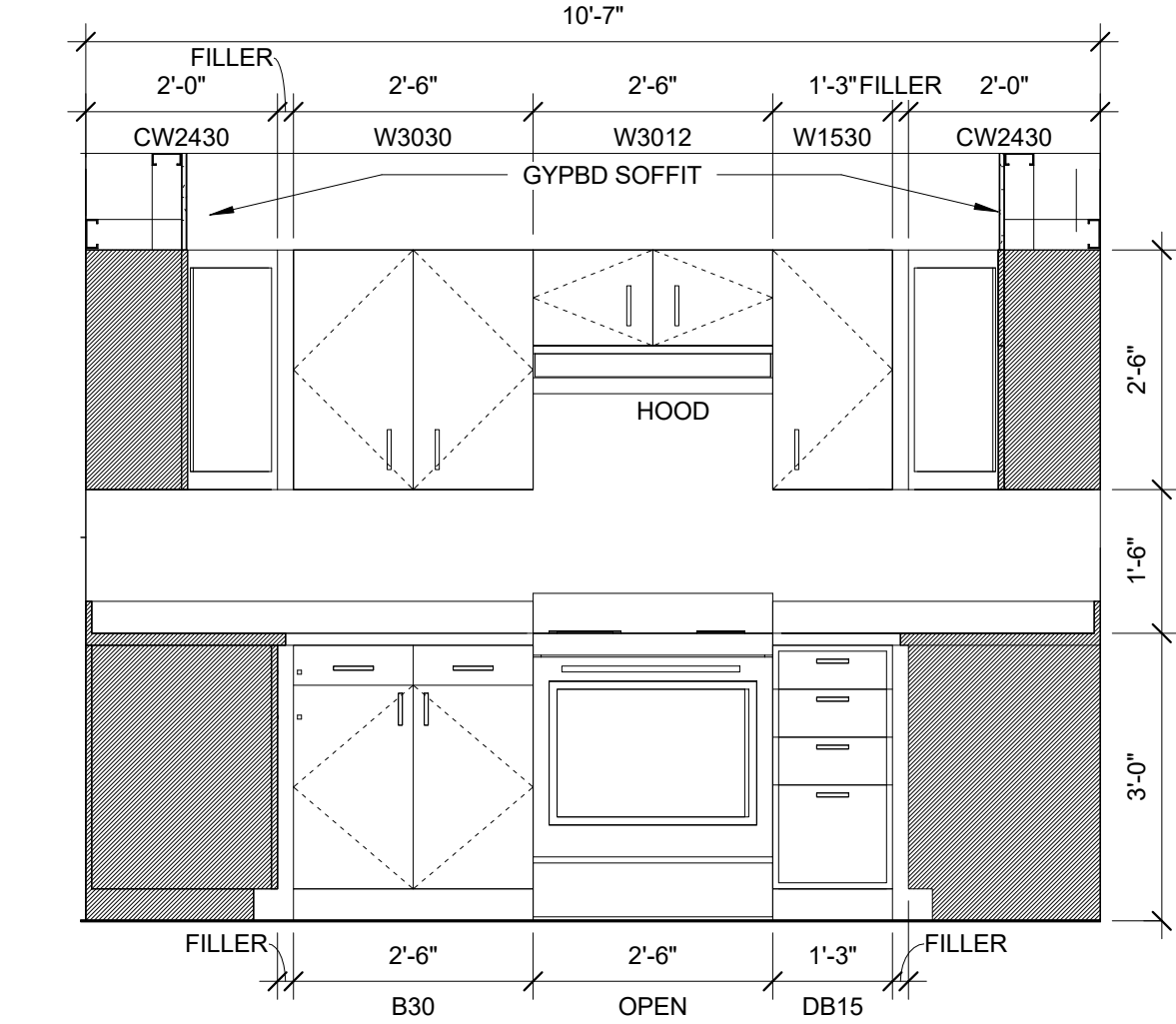
**4 UNIT TYPE 10 KITCHEN ELEV.**  
1/2" = 1'-0"



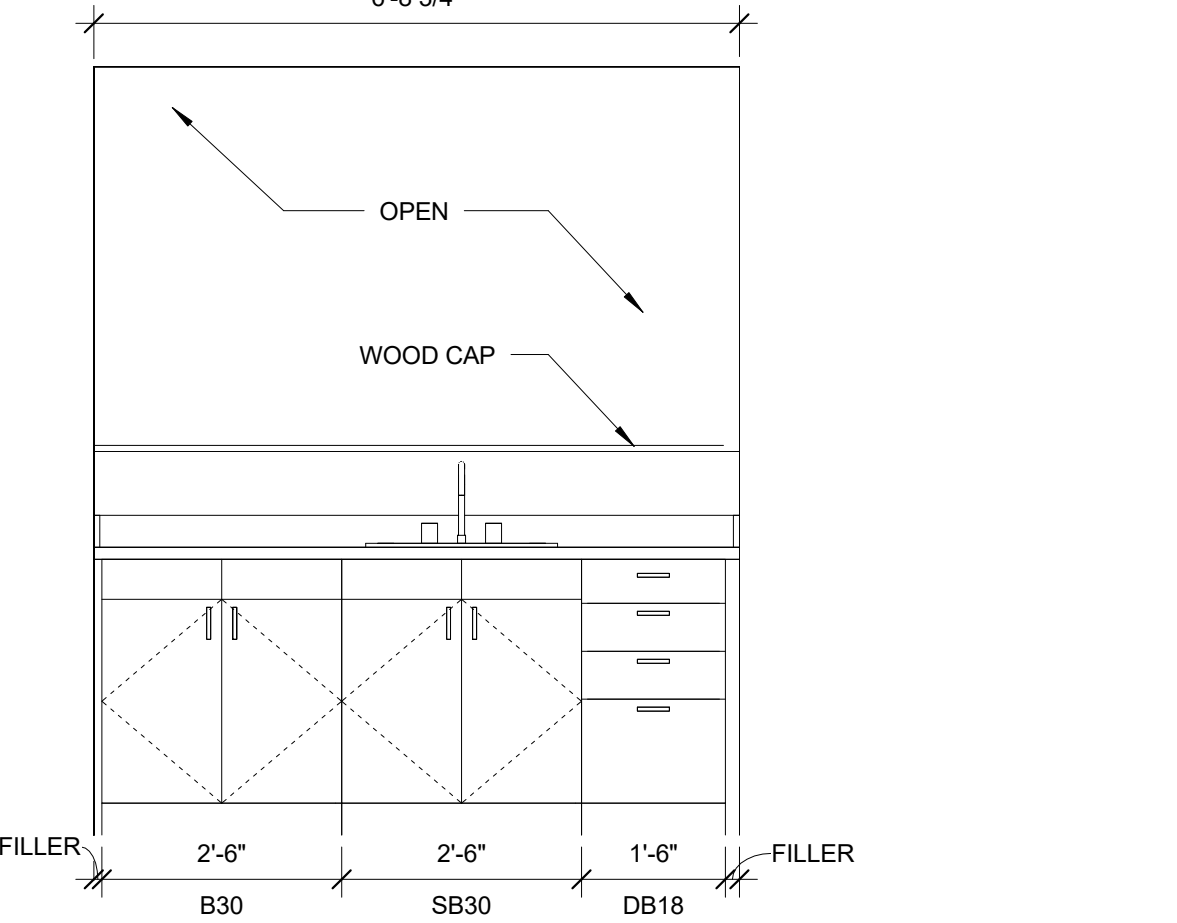
**7 UNIT TYPE 11 KITCHEN ELEV.**  
1/2" = 1'-0"



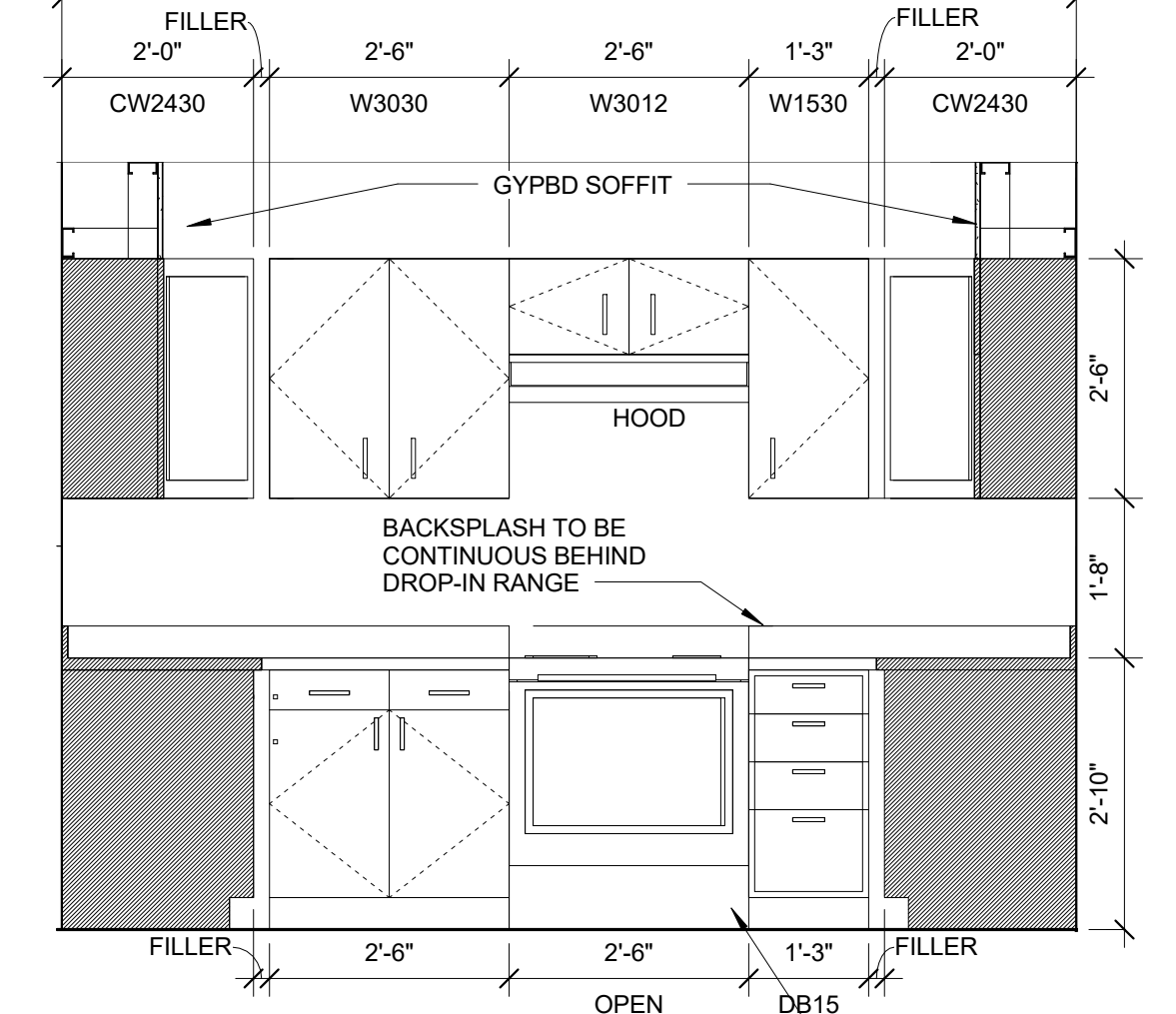
**9 UNIT TYPE 12 KITCHEN ELEV.**  
1/2" = 1'-0"



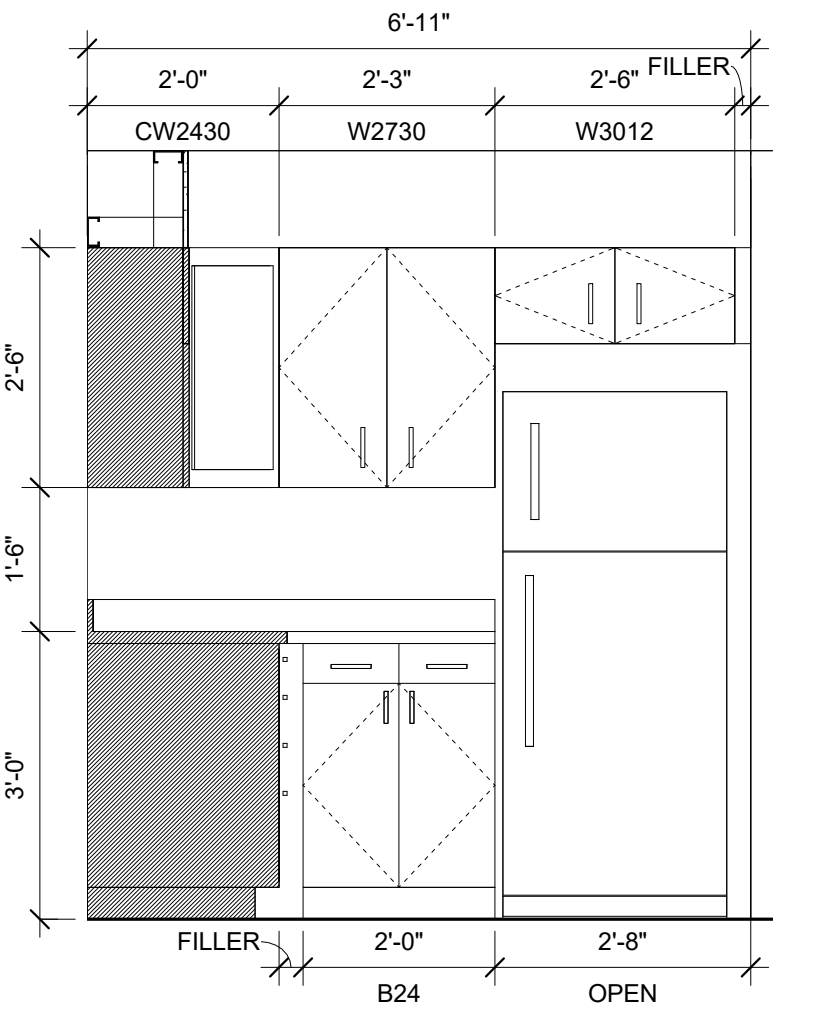
**5 UNIT TYPE 10 KITCHEN ELEV.**  
1/2" = 1'-0"



**8 UNIT TYPE 11 KITCHEN ELEV.**  
1/2" = 1'-0"

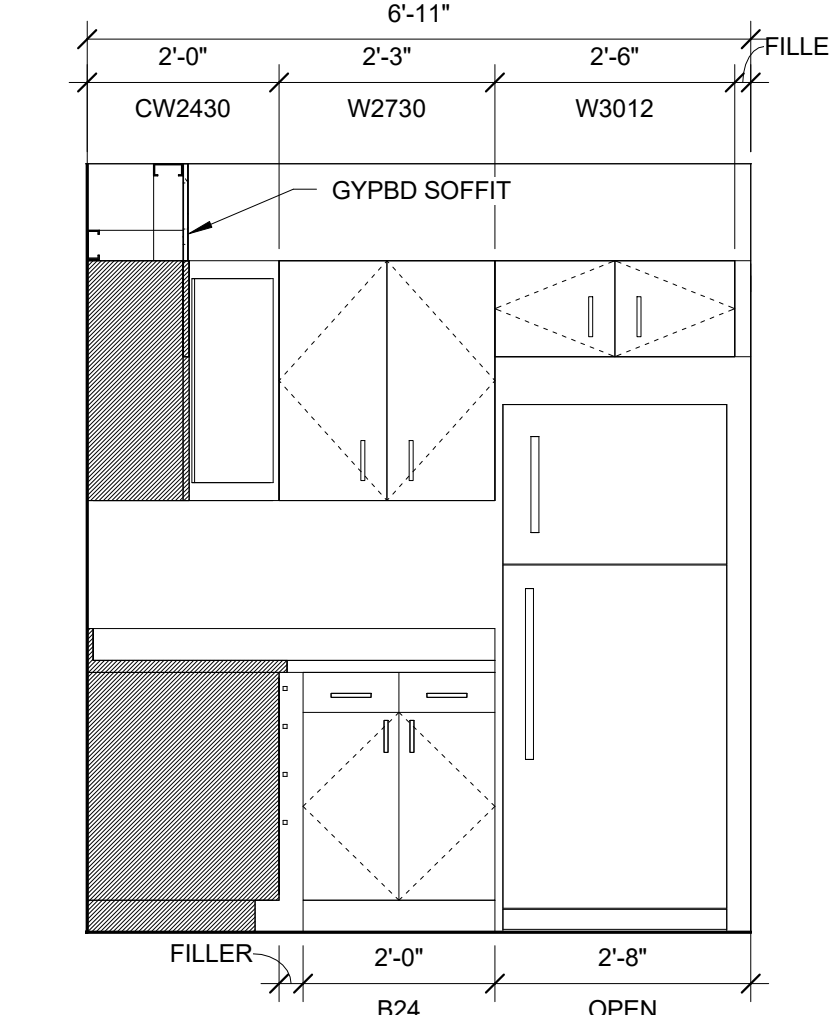


**10 UNIT TYPE 12 KITCHEN ELEV.**  
1/2" = 1'-0"



**6 UNIT TYPE 10 KITCHEN ELEV.**  
1/2" = 1'-0"

- TYPICAL UNIT STORAGE & BATHROOM ACCESSORIES LEGEND**
- 1. TYPICAL UNIT BEDROOM CLOSET  
(1) 2'-0" DEEP X 5'-0" WIDE BY 8'-0" HIGH
  - 1A. EFFICIENCY UNIT BEDROOM CLOSET  
(1) 2'-0" DEEP X 3'-0" WIDE BY 8'-0" HIGH
  - 2. LINEN STORAGE CLOSET  
(1) 1'-6" DEEP X 1'-8" (MIN) WIDE BY 8'-0" HIGH. PROVIDE WITH (4) SHELVES SPACED AS SHOWN ON 2/A5.01 YIELDS 10 SF MINIMUM OF SHELVING AREA. IN ADAAG AND ANSII TYPE A UNITS SPACE SHELVES AS SHOWN ON 3/A5.01
  - 3. COAT CLOSET  
(1) 2'-0" DEEP X 2'-0" DEEP BY 8'-0" HIGH.
  - 4. GENERAL STORAGE  
TYPICAL FINISHED CEILING HEIGHT IS 8'-0". EACH LINEAR FOOT OF GENERAL STORAGE CLOSET YIELDS 16 CUBIC FEET OF STORAGE. TOTAL CUBIC FEET HAS BEEN INDICATED ON EACH UNIT AS MEETING OR EXCEEDING 100 CUBIC FEET FOR 1 BEDROOM UNITS, 50 CUBIC FEET FOR EFFICIENCIES. SEE CLOSET AREA. SHOWN IN DARK GREY.
  - 5. SURFACE MOUNTED MEDICINE CABINET WITH LIGHT  
REFER TO SPECIFICATIONS
  - 6. NOT USED
  - 7. NOT USED
  - 8. 24" TOWEL BAR
  - 9. 18" TOWEL BAR
  - 10. TAYMOR 01-9404 TOWEL RING
  - 11. TOILET PAPER HOLDER
- ▼ = WALL WHERE SHOWER CONTROLS & SHOWER HEAD MUST BE LOCATED



**11 UNIT TYPE 12 KITCHEN ELEV.**  
1/2" = 1'-0"

Prepared For:  
Westbrook Development  
Corp. & Millbrook Estates  
LLP

Consultant:

**ARCHETYPE**  
architects  
48 Union Wharf Portland, Maine 04101  
(207) 772-6022 ARCHETYPE@ARCHETYPEPA.COM

Architect:

**MILLBROOK ESTATES**

Project:

300 East Bridge Street  
Westbrook, ME 04092

Revisions:

Date: 10 AUG 2015  
Scale: As indicated

UNIT PLANS

**A6.03**