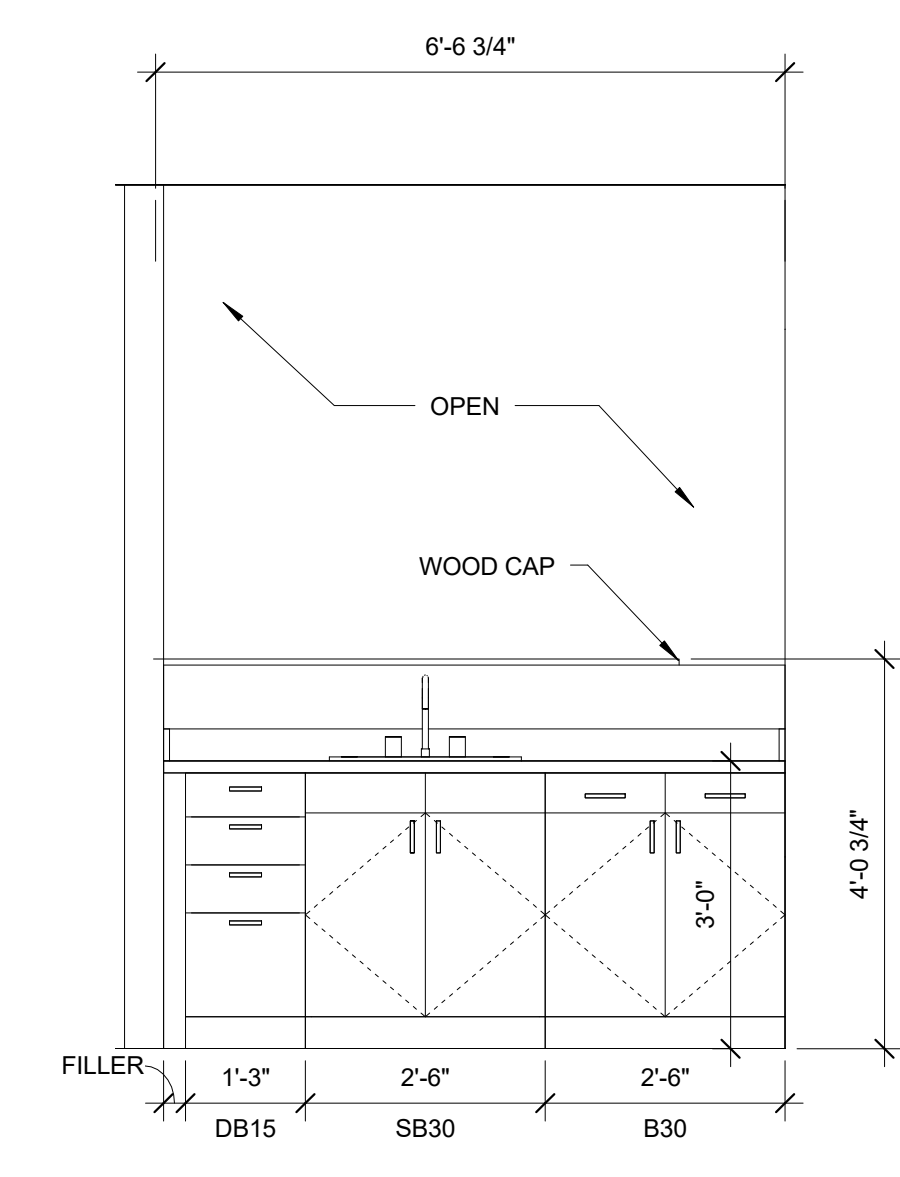
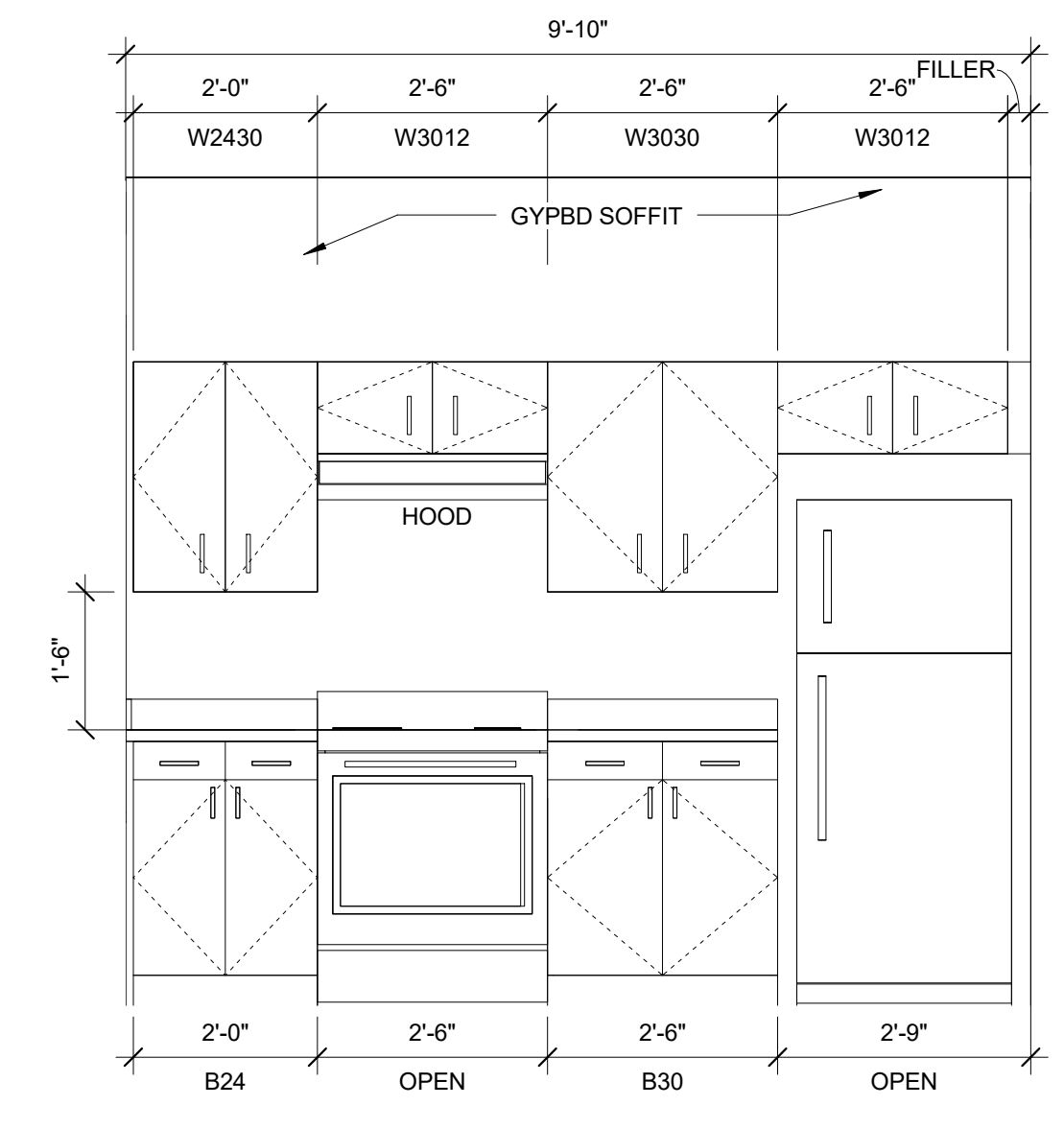


**1 UNIT TYPE 7 (UNITS 110, 210, 310, 410)**  
 1/4" = 1'-0"  
 ANSI 117.1 TYPE 'B' UNIT  
 111.9 CU. FT. GENERAL STORAGE

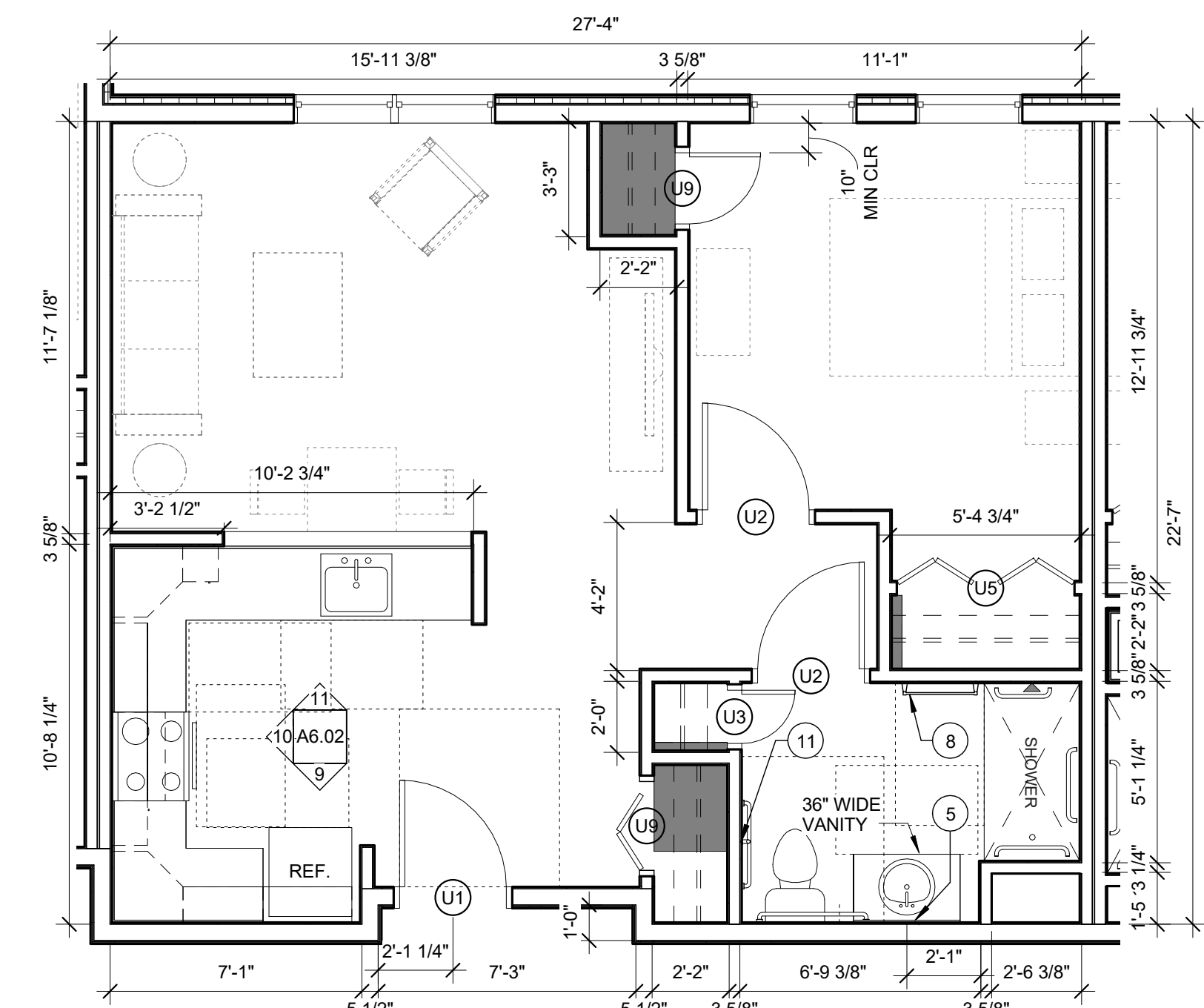


**4 UNIT TYPE 7 KITCHEN ELEV.**  
 1/2" = 1'-0"

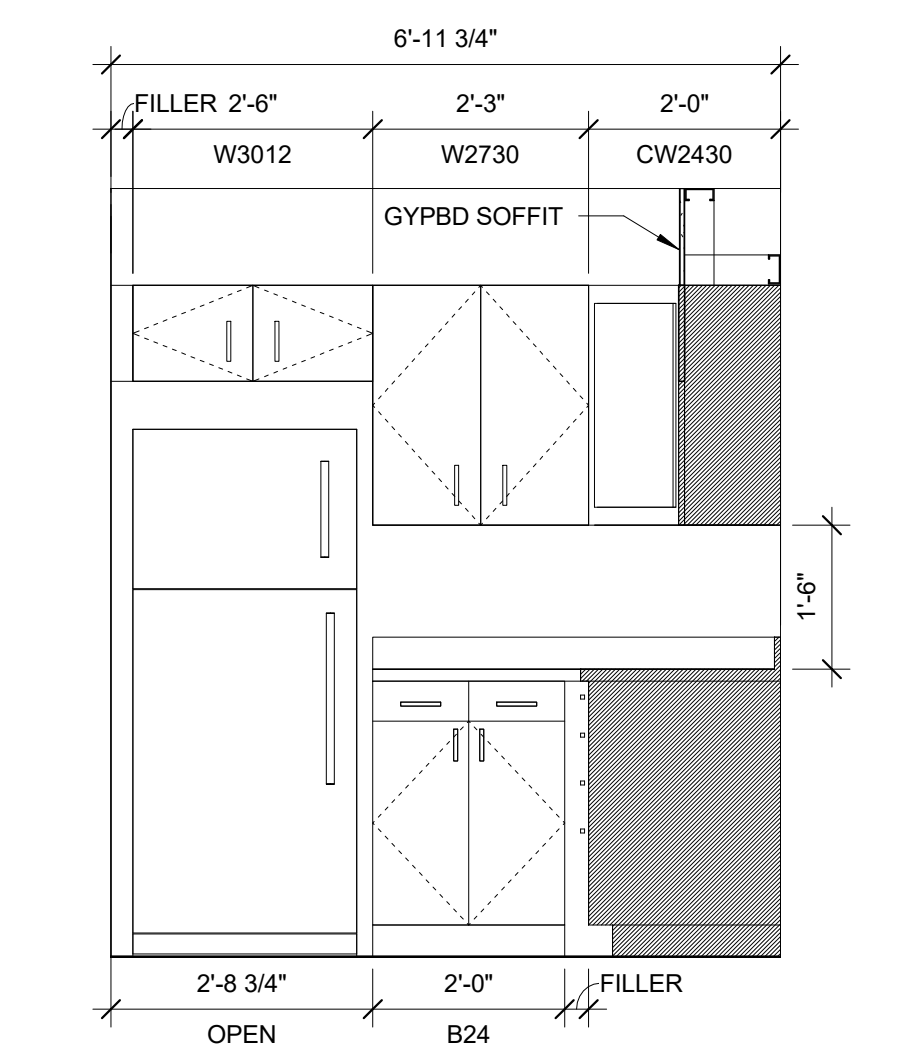


**5 UNIT TYPE 7 KITCHEN ELEV.**  
 1/2" = 1'-0"

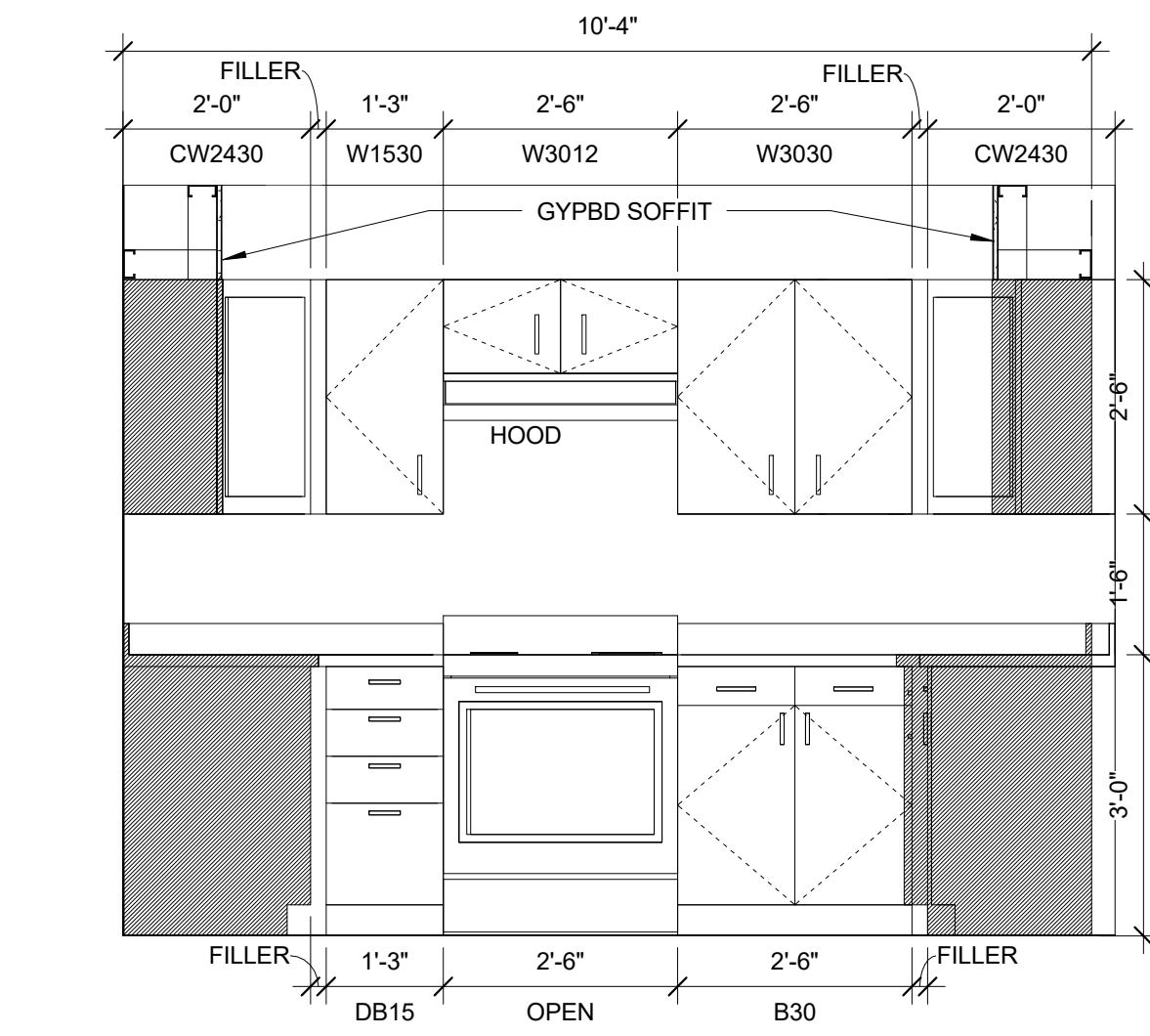
- TYPICAL UNIT STORAGE & BATHROOM ACCESSORIES LEGEND**
- 1. TYPICAL UNIT BEDROOM CLOSET  
 (1) 2'-0" DEEP X 5'-0" WIDE BY 8'-0" HIGH
  - 1A. EFFICIENCY UNIT BEDROOM CLOSET  
 (1) 2'-0" DEEP X 3'-0" WIDE BY 8'-0" HIGH
  - 2. LINEN STORAGE CLOSET  
 (1) 1'-6" DEEP X 1'-8" (MIN) WIDE BY 8'-0" HIGH. PROVIDE WITH (4) SHELVES SPACED AS SHOWN ON 2/A6.01 YIELDS 16 CUBIC FEET OF STORAGE. TOTAL CUBIC FEET HAS BEEN INDICATED ON EACH UNIT AS MEETING OR EXCEEDING 100 CUBIC FEET FOR 1 BEDROOM UNITS, 50 CUBIC FEET FOR EFFICIENCIES. SEE CLOSET AREA, SHOWN IN DARK GREY.
  - 3. COAT CLOSET  
 (1) 2'-0" DEEP X 2'-0" DEEP BY 8'-0" HIGH.
  - 4. GENERAL STORAGE  
 TYPICAL FINISHED CEILING HEIGHT IS 8'-0". EACH LINEAR FOOT OF GENERAL STORAGE CLOSET YIELDS 16 CUBIC FEET OF STORAGE. TOTAL CUBIC FEET HAS BEEN INDICATED ON EACH UNIT AS MEETING OR EXCEEDING 100 CUBIC FEET FOR 1 BEDROOM UNITS, 50 CUBIC FEET FOR EFFICIENCIES. SEE CLOSET AREA, SHOWN IN DARK GREY.
  - 5. SURFACE MOUNTED MEDICINE CABINET WITH LIGHT  
 REFER TO SPECIFICATIONS
  - 6. NOT USED
  - 7. NOT USED
  - 8. 24" TOWEL BAR
  - 9. 18" TOWEL BAR
  - 10. TAYMOR 01-9404 TOWEL RING
  - 11. TOILET PAPER HOLDER
- ▼ = WALL WHERE SHOWER CONTROLS & SHOWER HEAD MUST BE LOCATED



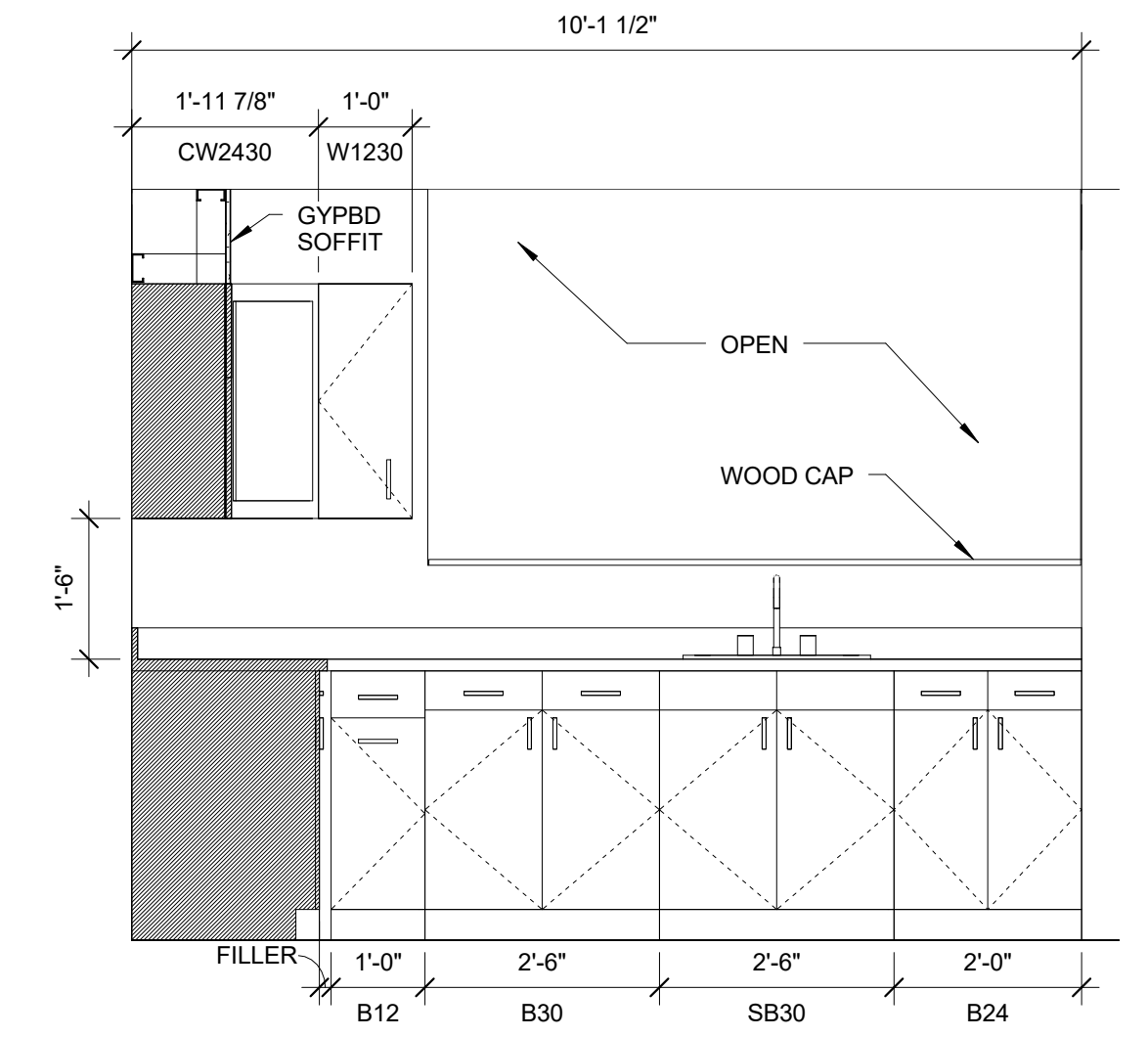
**2 UNIT TYPE 8 (UNITS 204, 304, 404)**  
 1/4" = 1'-0"  
 ANSI 117.1 TYPE 'B' UNIT  
 100.6 CU. FT. GENERAL STORAGE



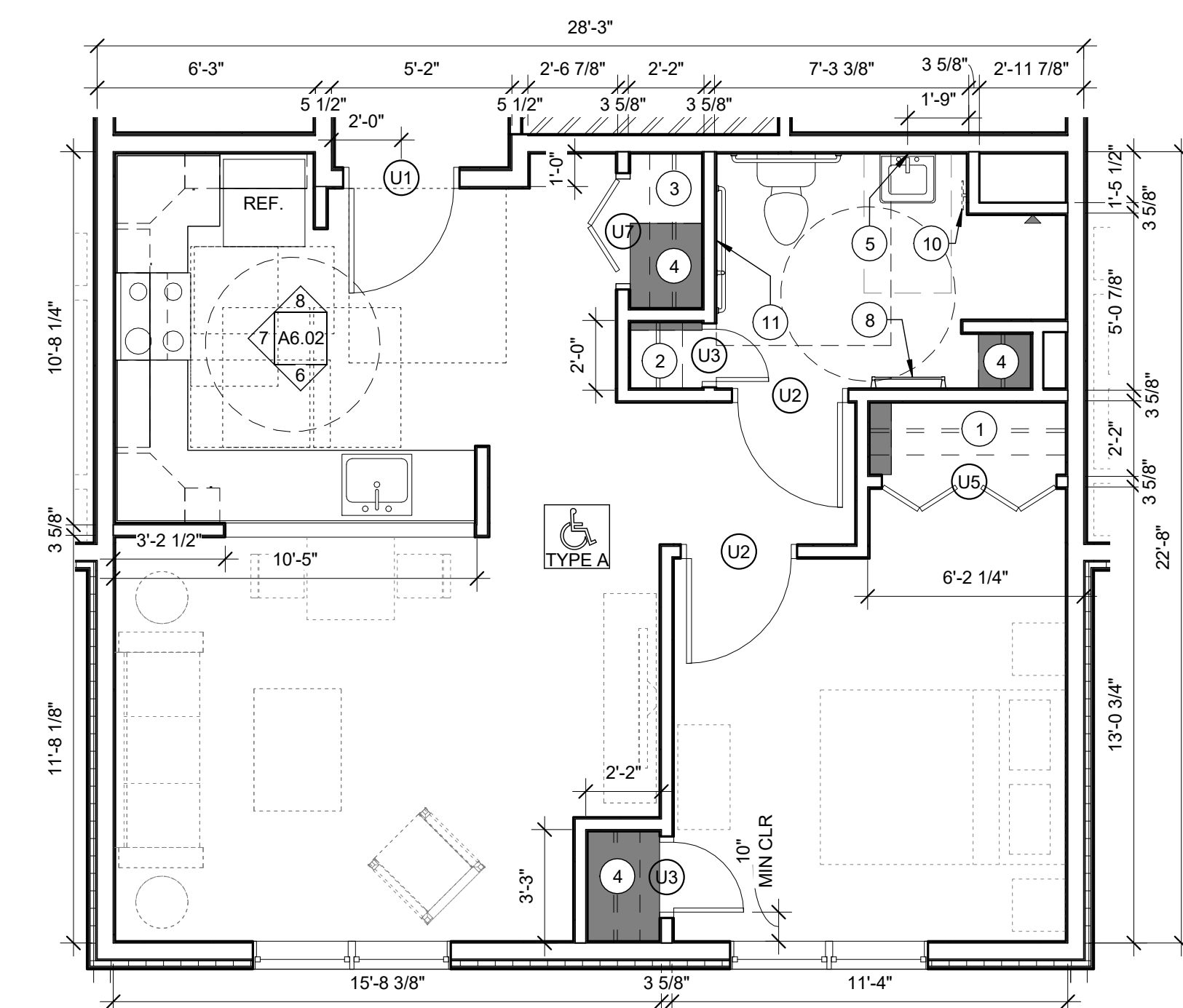
**9 UNIT TYPE 8 KITCHEN ELEV.**  
 1/2" = 1'-0"



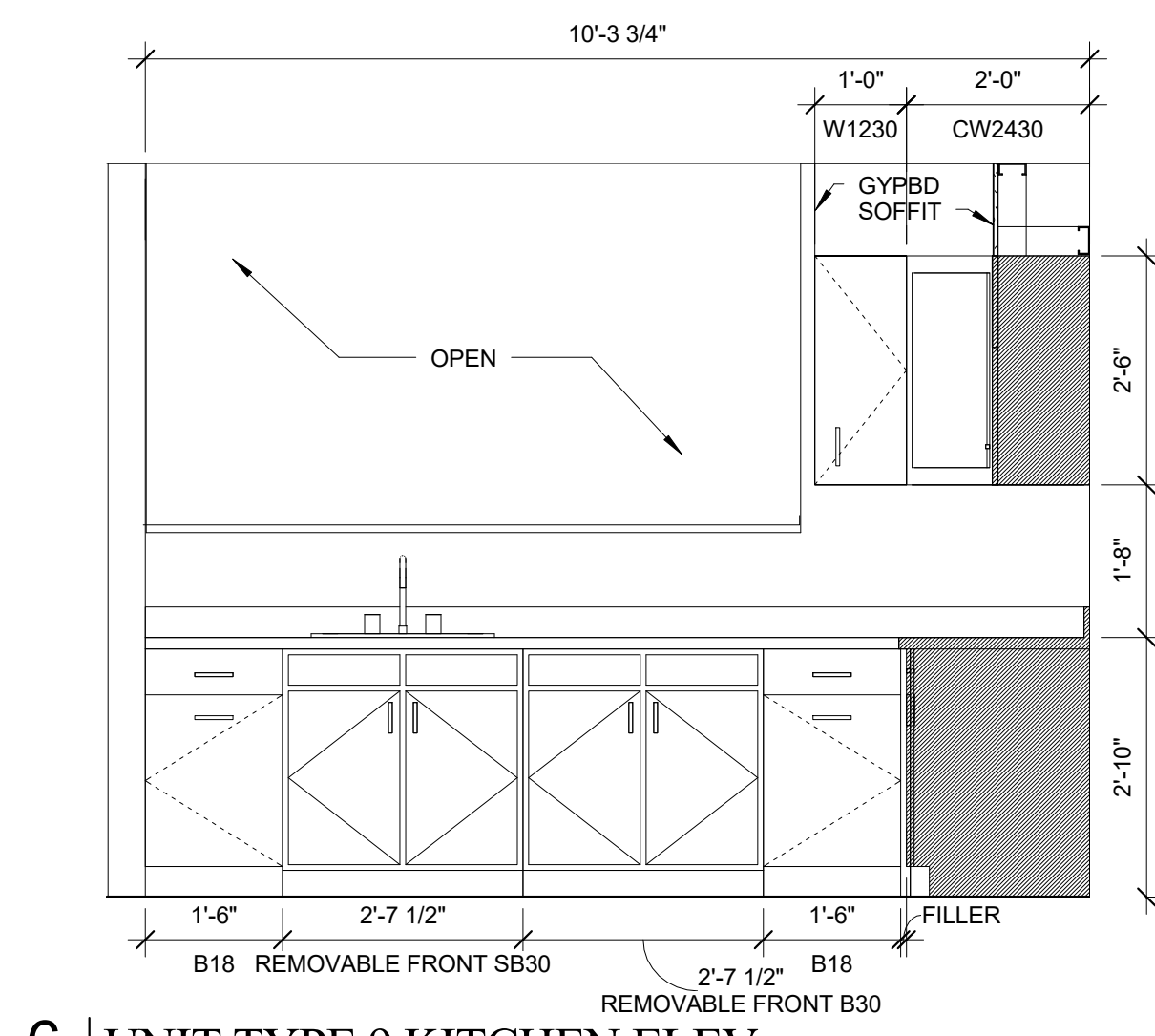
**10 UNIT TYPE 8 KITCHEN ELEV.**  
 1/2" = 1'-0"



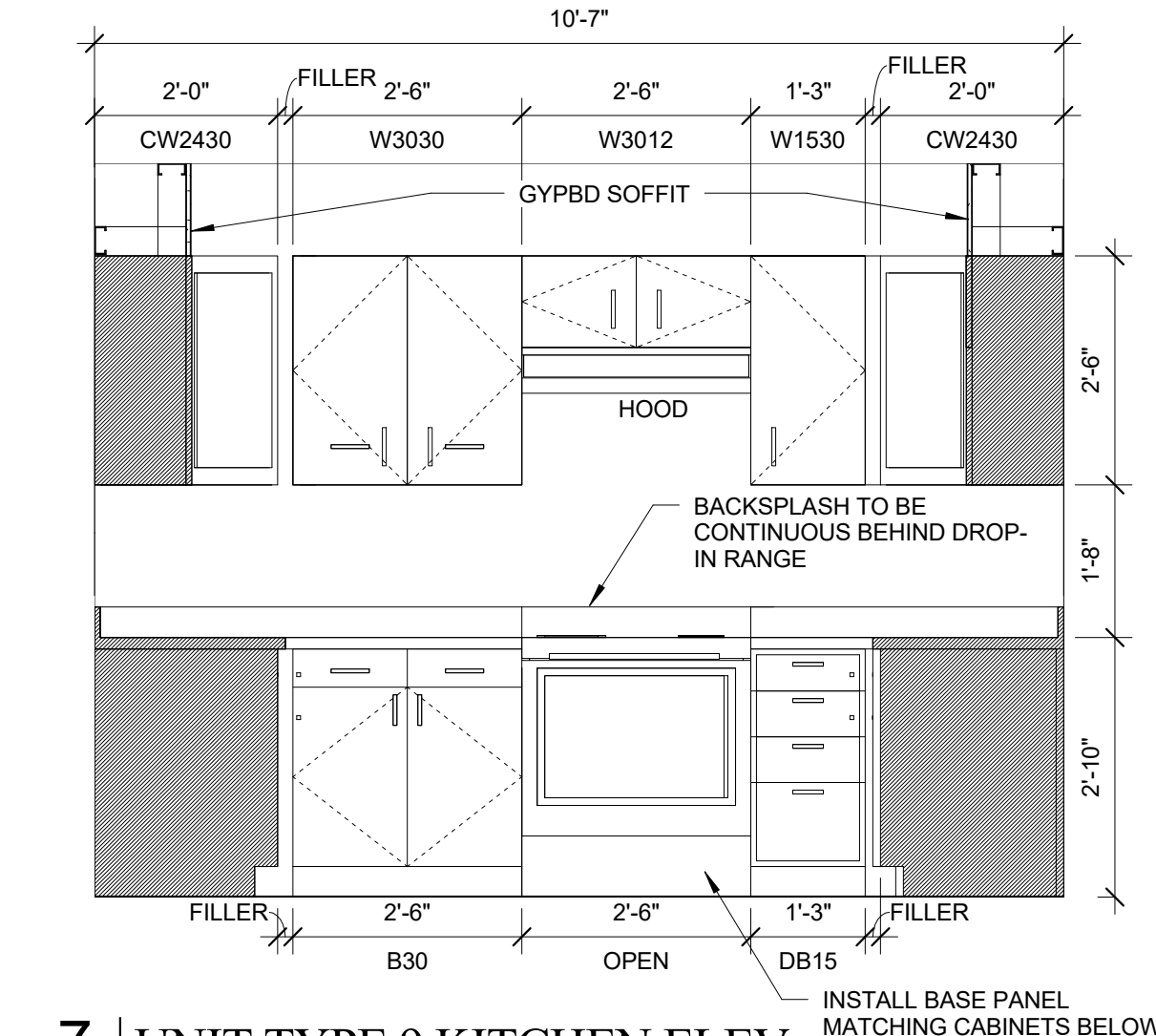
**11 UNIT TYPE 8 KITCHEN ELEV.**  
 1/2" = 1'-0"



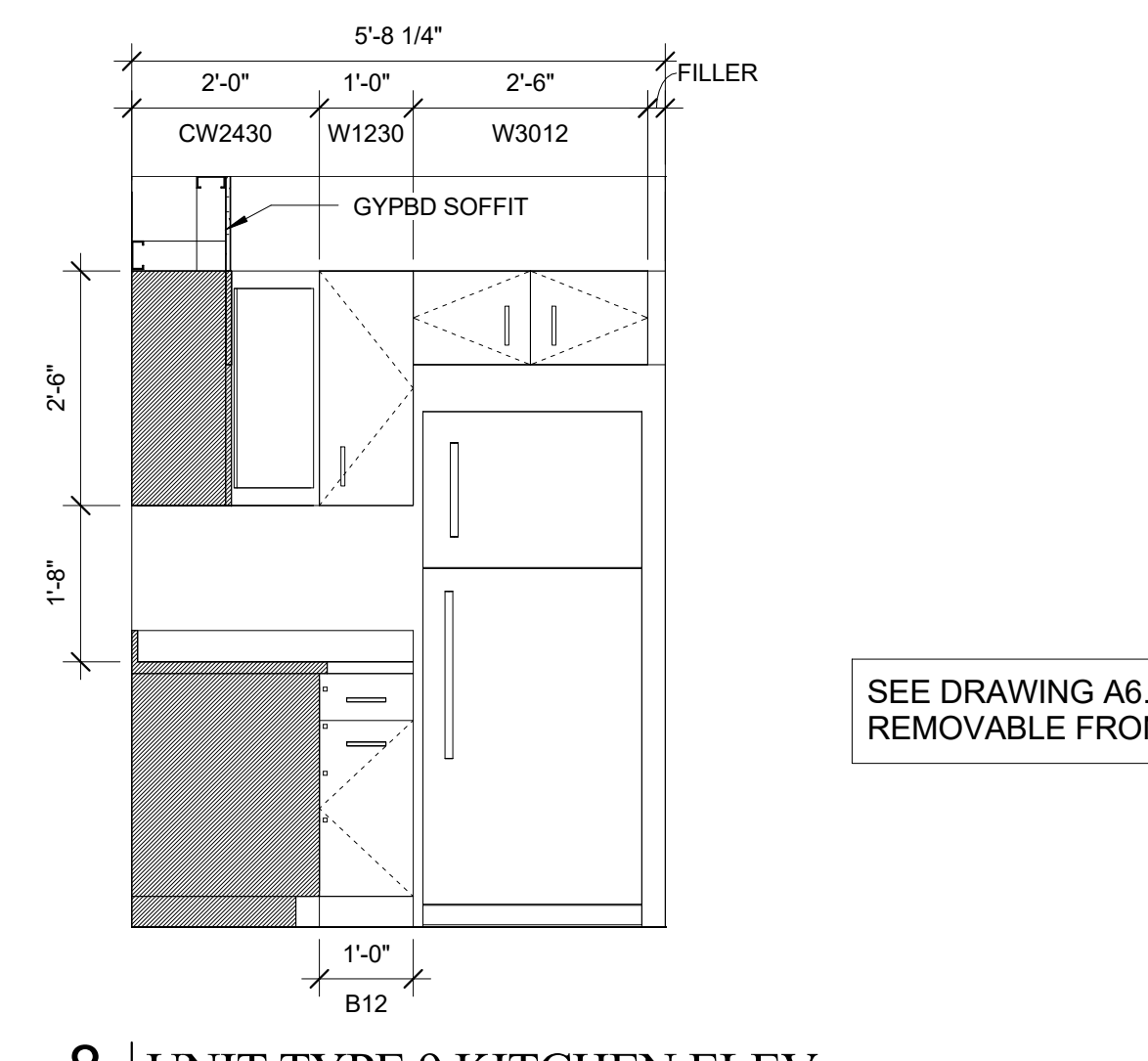
**3 UNIT TYPE 9 (UNIT 205)**  
 1/4" = 1'-0"  
 ANSI 117.1 TYPE 'A' UNIT  
 124.7 CU. FT. GENERAL STORAGE



**6 UNIT TYPE 9 KITCHEN ELEV.**  
 1/2" = 1'-0"



**7 UNIT TYPE 9 KITCHEN ELEV.**  
 1/2" = 1'-0"



**8 UNIT TYPE 9 KITCHEN ELEV.**  
 1/2" = 1'-0"

SEE DRAWING A6.05 FOR REMOVABLE FRONT DETAILS

Prepared For:  
 Westbrook Development  
 Corp. & Millbrook Estates  
 LLP

Consultant:

**ARCHETYPE**  
 architects  
 48 Union Wharf Portland, Maine 04101  
 (207) 772-6022 ARCHETYPE@ARCHETYPEPA.COM

Architect:

**MILLBROOK ESTATES**  
 300 East Bridge Street  
 Westbrook, ME 04092

Project:

Revisions:

Date: 10 AUG 2015  
 Scale: As indicated

UNIT PLANS

**A6.02**