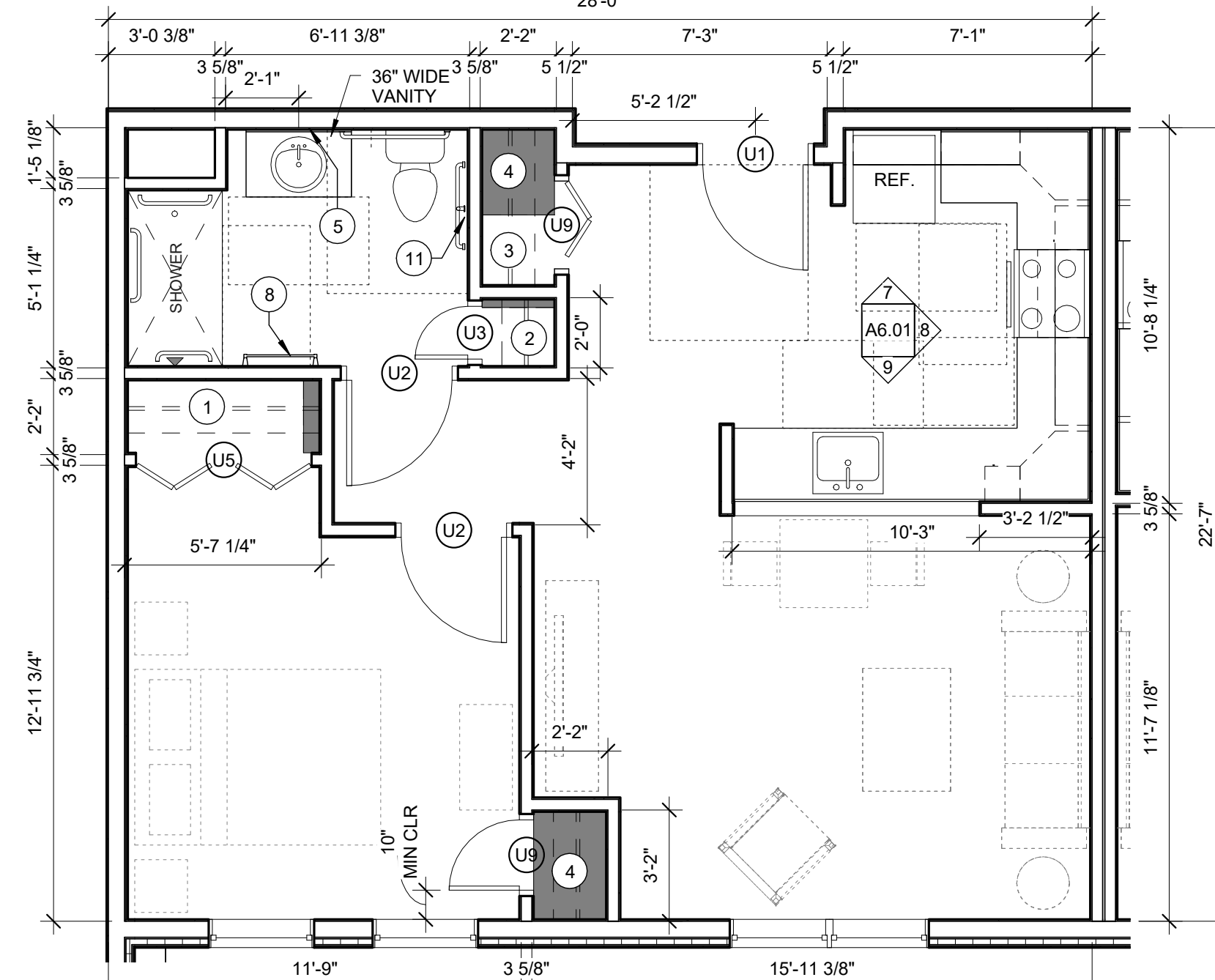
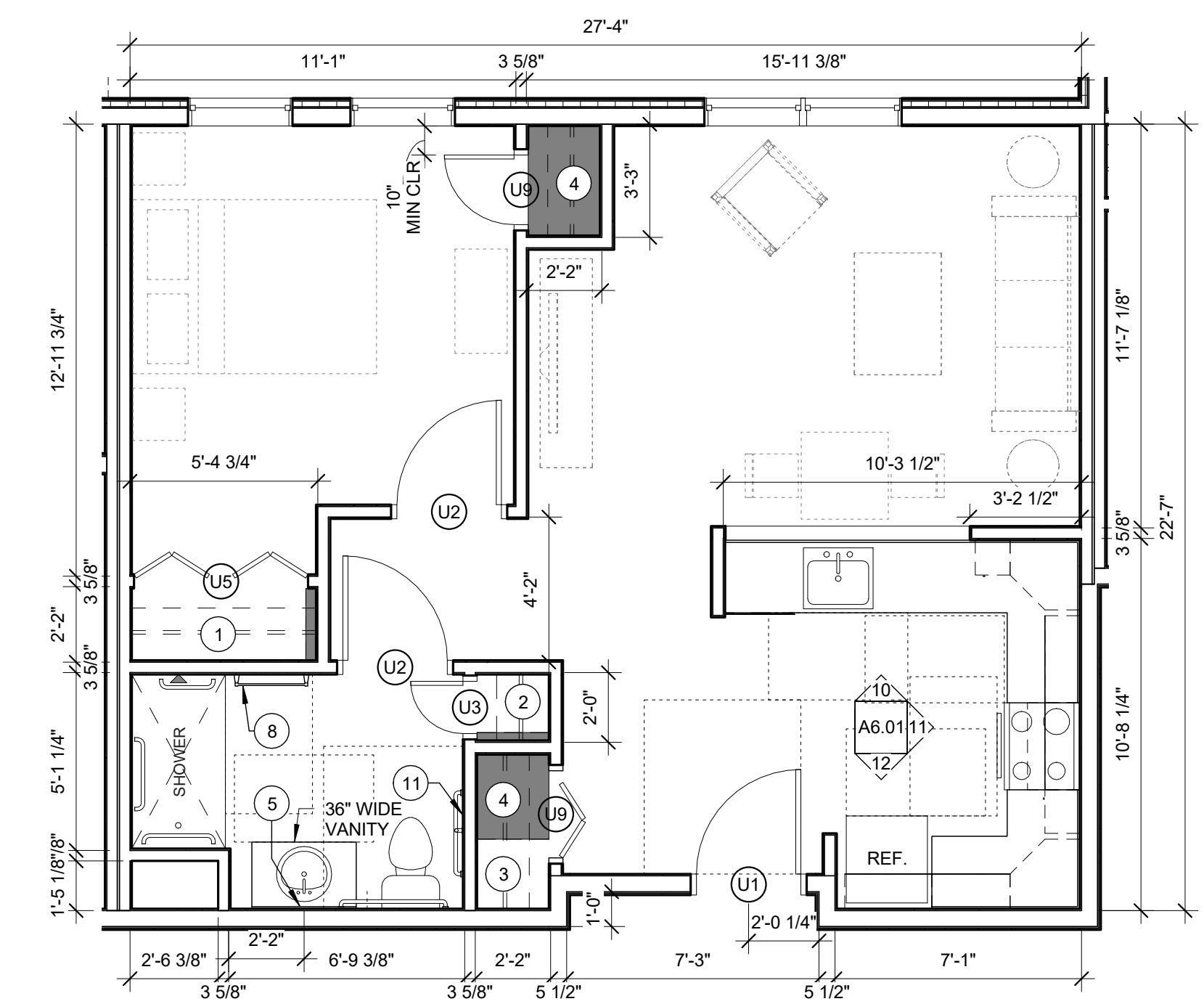


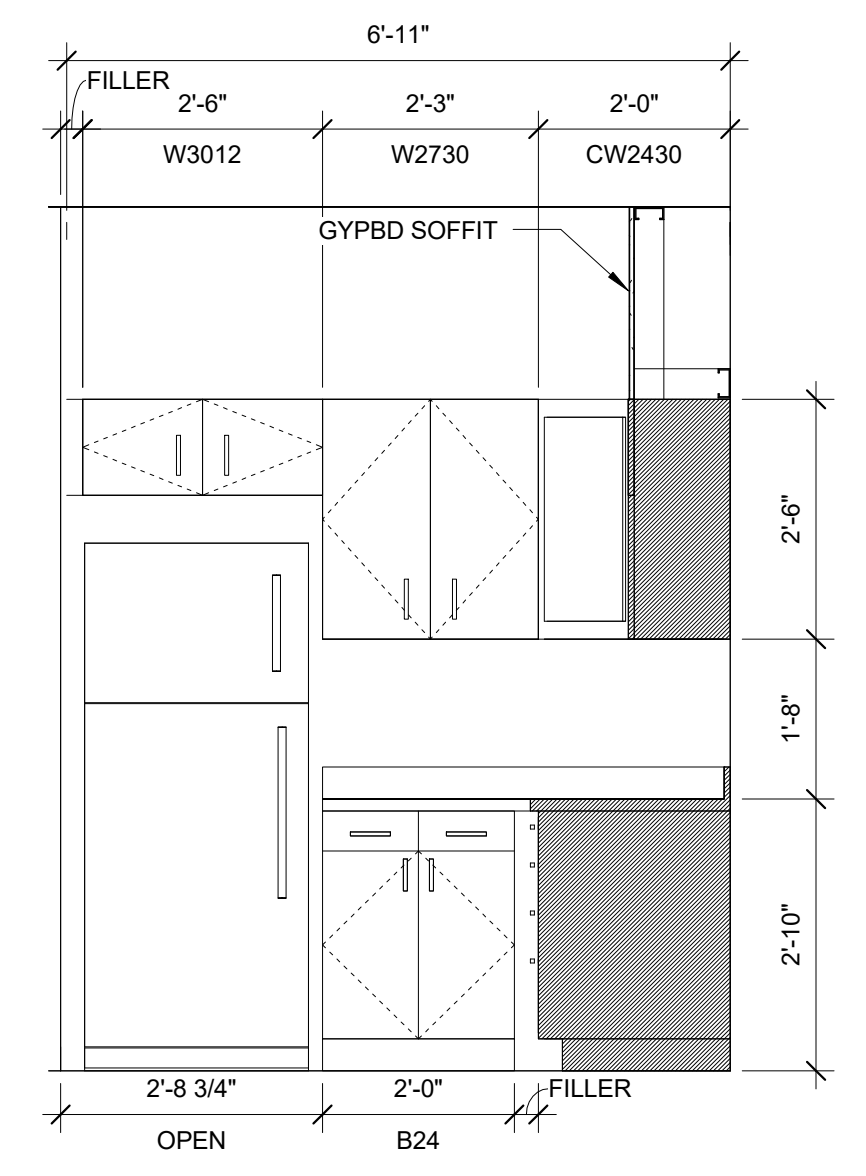
1 | UNIT TYPE 4 (UNIT 104)
 1/4" = 1'-0"
 ANSI 117.1 TYPE 'A' UNIT
 119.1 CU. FT. GENERAL STORAGE



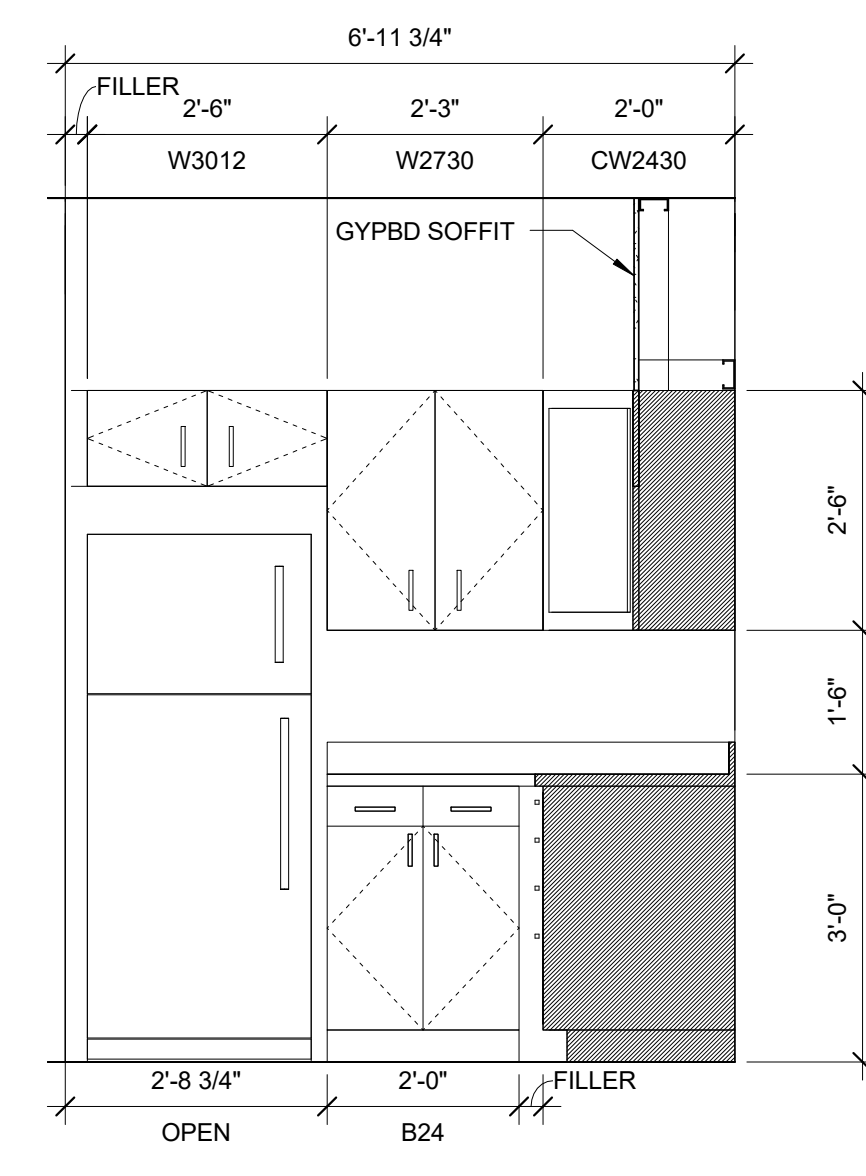
2 | UNIT TYPE 5 (UNITS 107, 207, 307, 407)
 1/4" = 1'-0"
 ANSI 117.1 TYPE 'B' UNIT
 101.9 CU. FT. GENERAL STORAGE



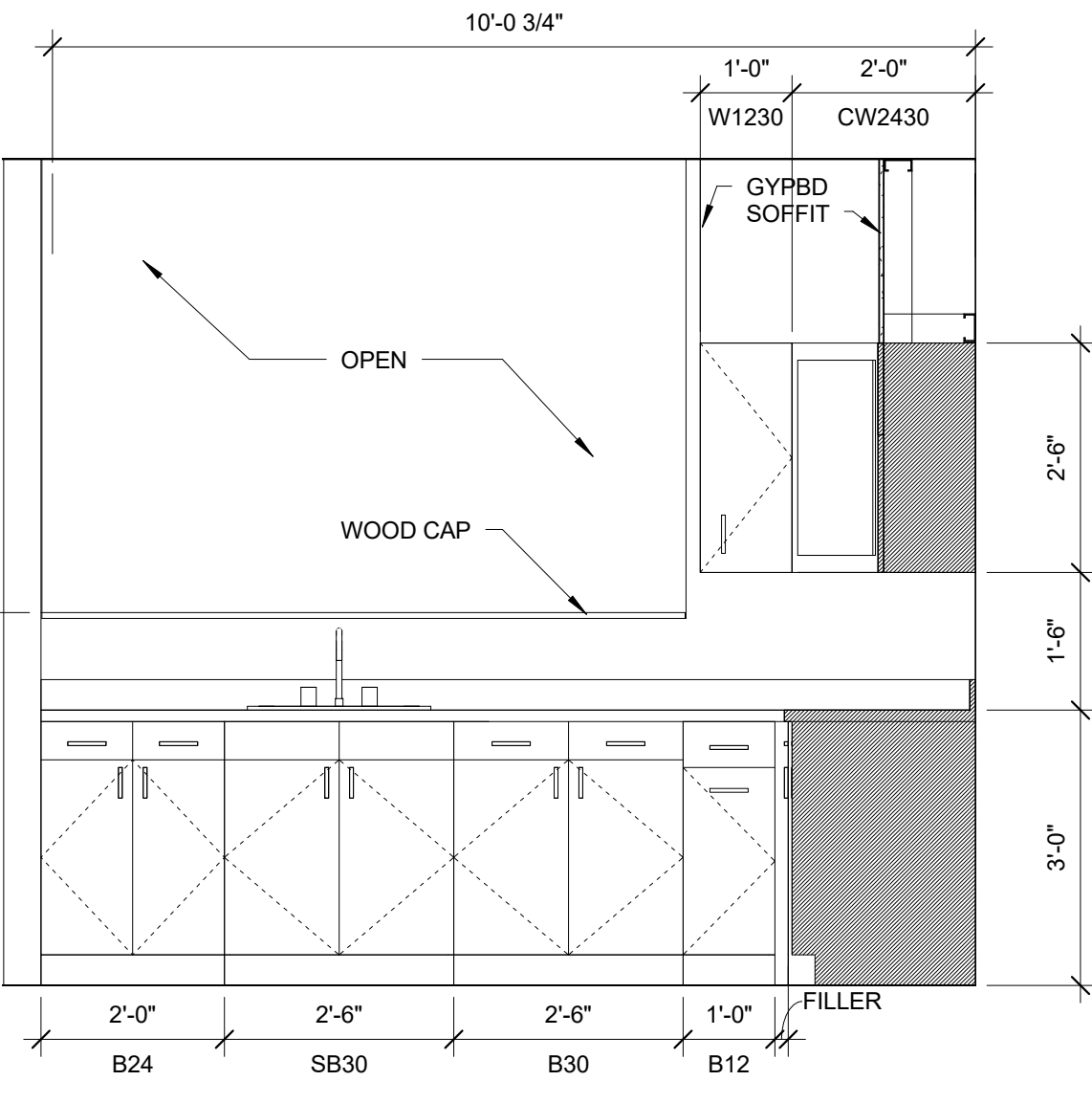
3 | UNIT TYPE 6 (UNITS 108, 208, 308, 408)
 1/4" = 1'-0"
 ANSI 117.1 TYPE 'B' UNIT
 100.6 CU. FT. GENERAL STORAGE



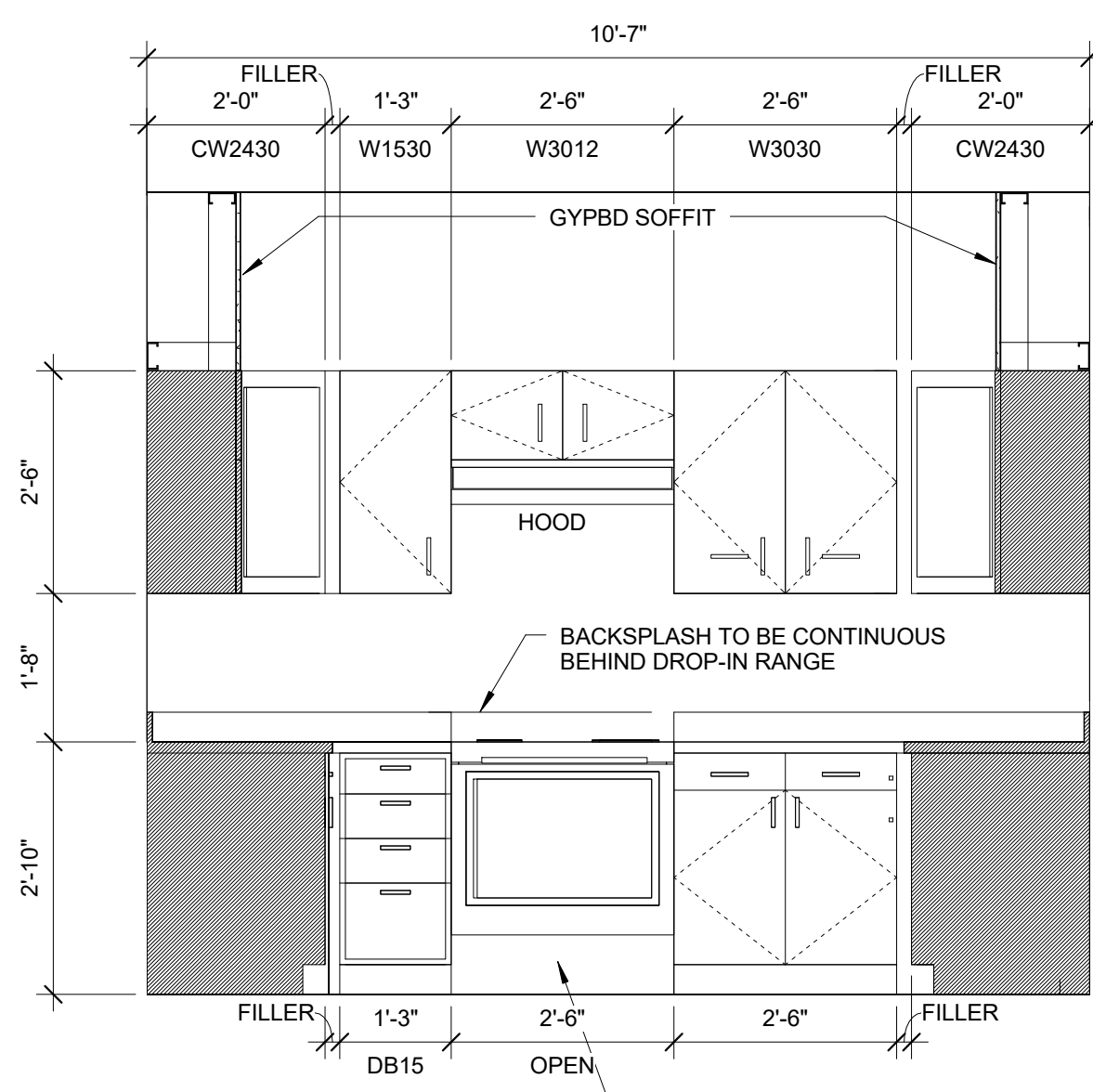
4 | UNIT TYPE 4 KITCHEN ELEV.
 1/2" = 1'-0"



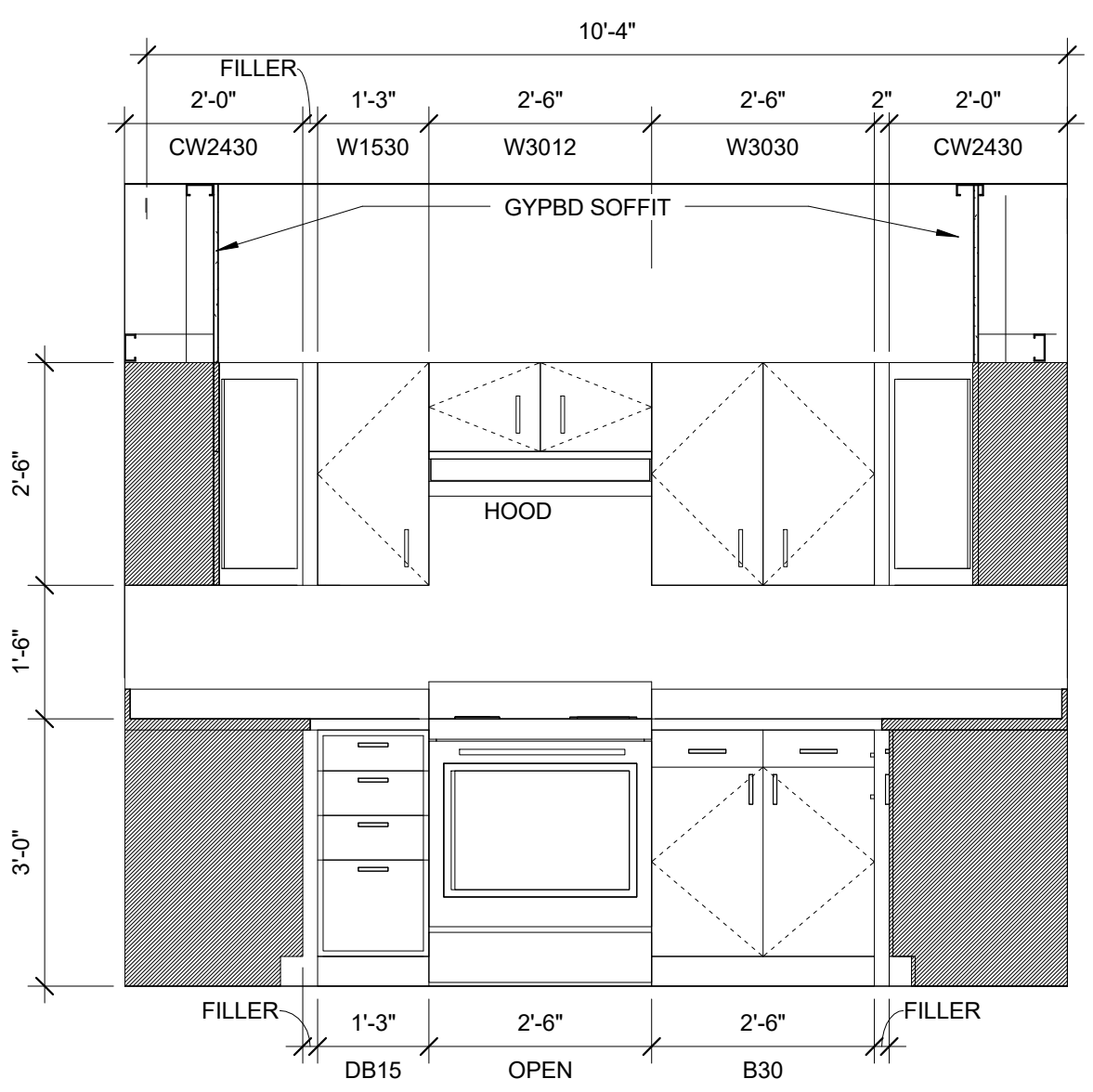
7 | UNIT TYPE 5 KITCHEN ELEV.
 1/2" = 1'-0"



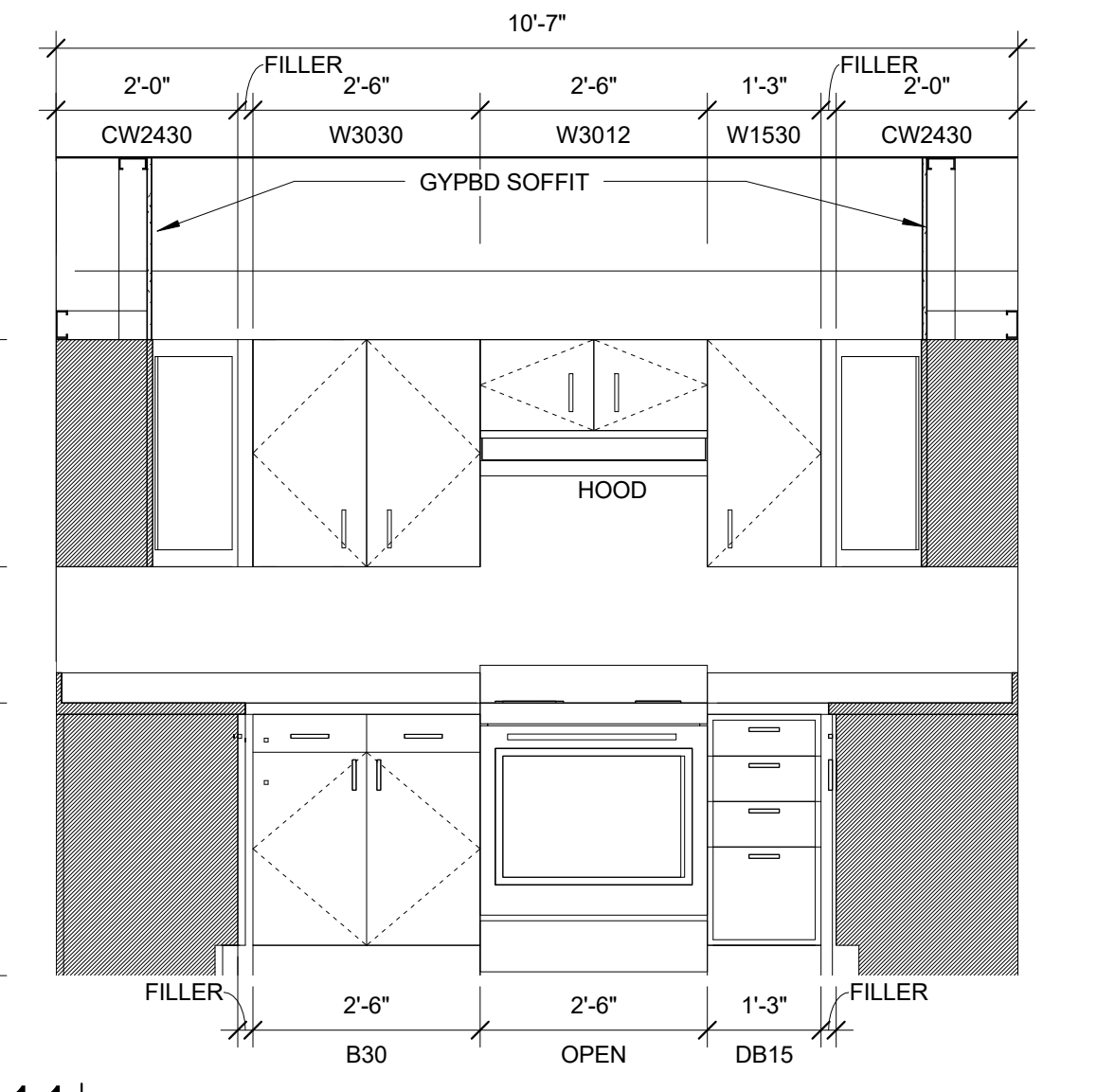
10 | UNIT TYPE 6 KITCHEN ELEV.
 1/2" = 1'-0"



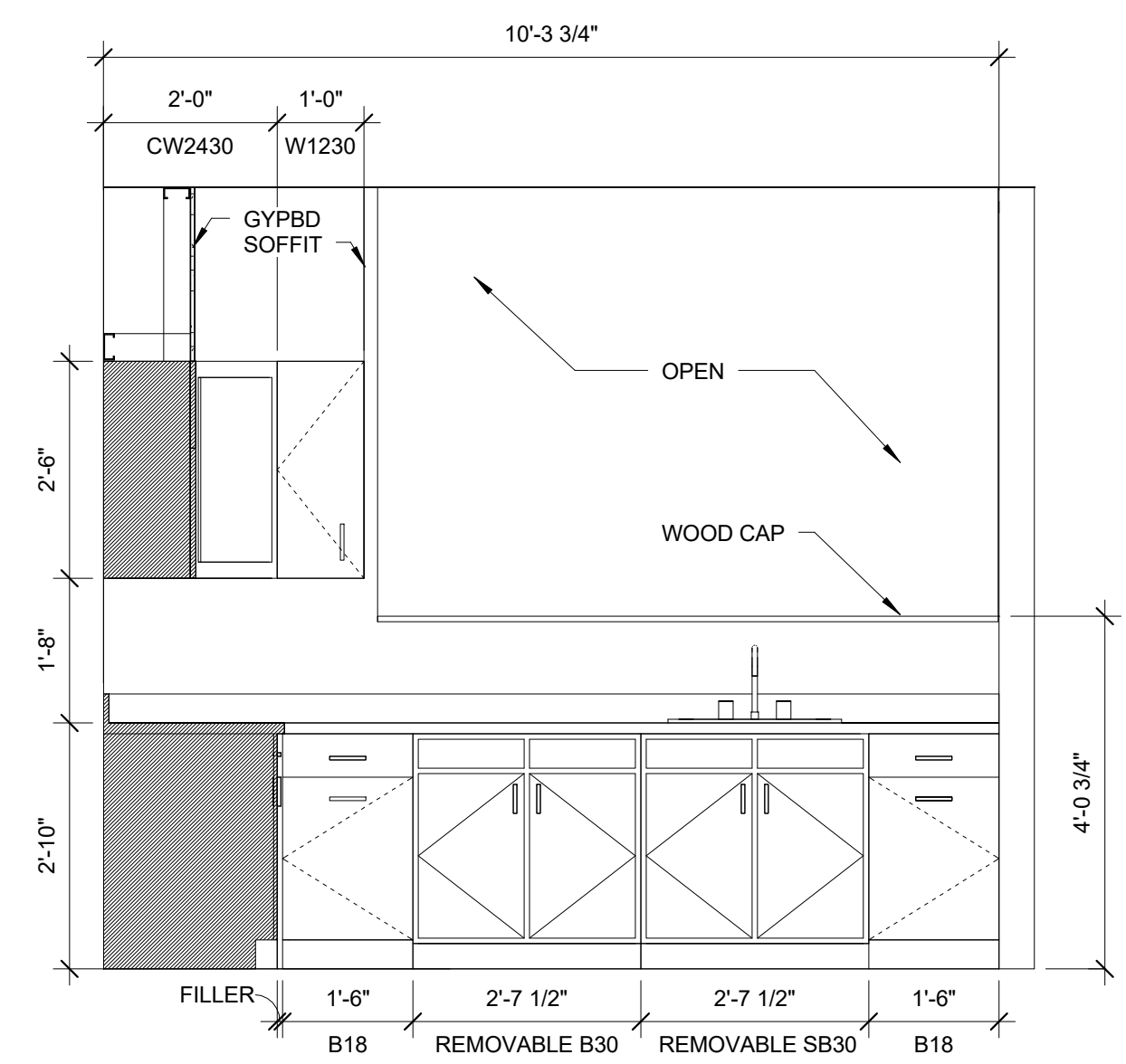
5 | UNIT TYPE 4 KITCHEN ELEV.
 1/2" = 1'-0"



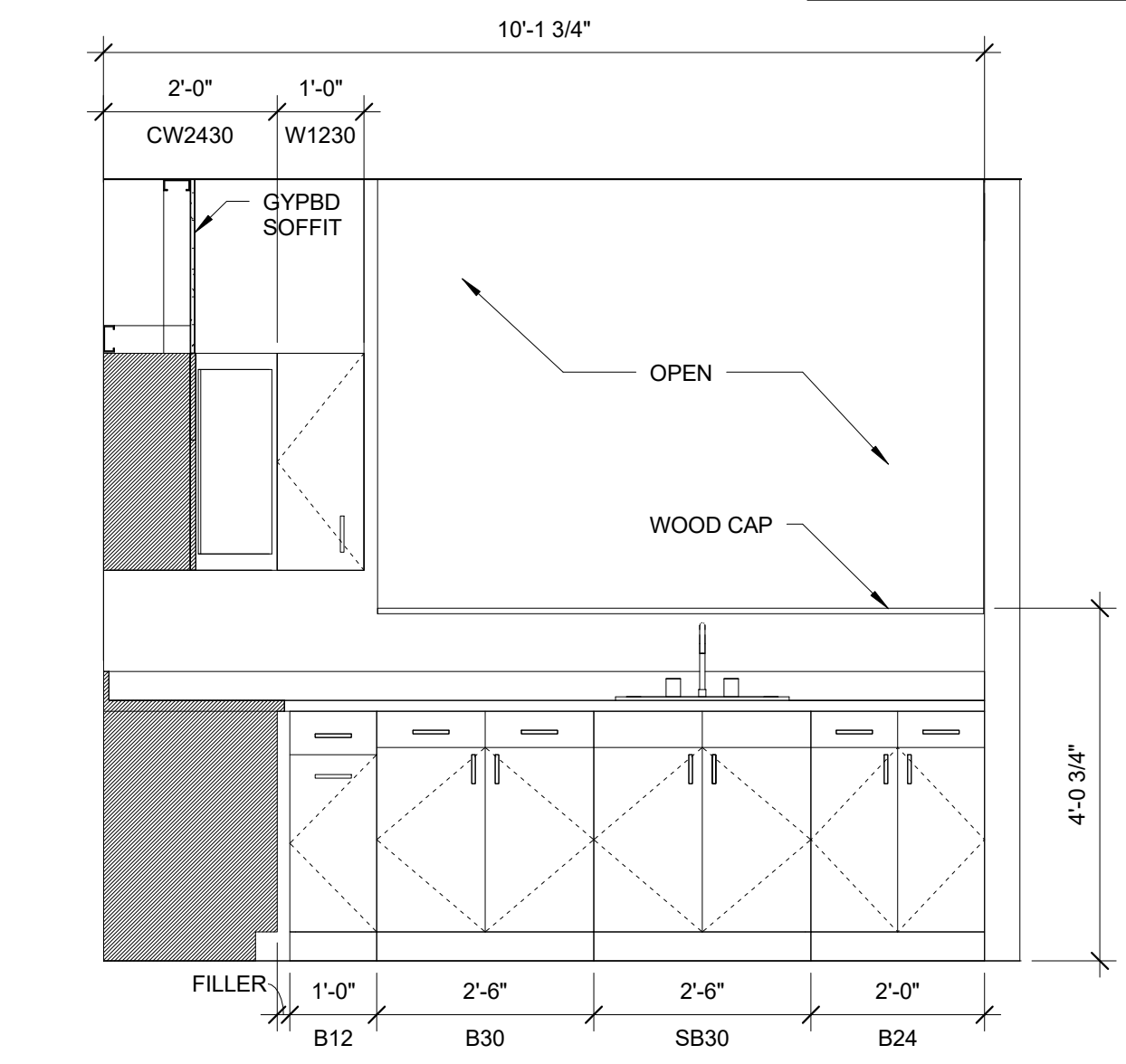
8 | UNIT TYPE 5 KITCHEN ELEV.
 1/2" = 1'-0"



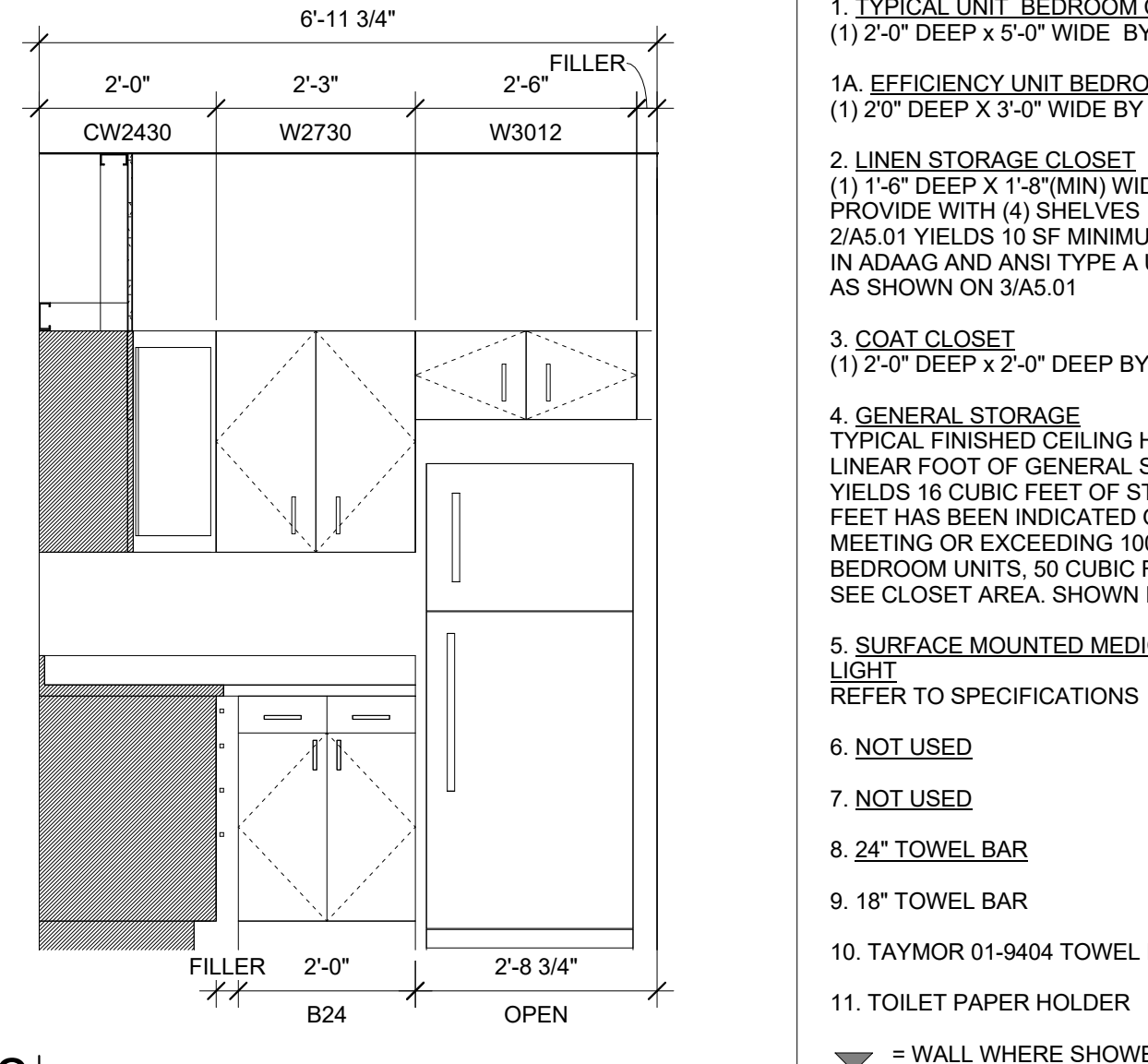
11 | UNIT TYPE 6 KITCHEN ELEV.
 1/2" = 1'-0"



6 | UNIT TYPE 4 KITCHEN ELEV.
 1/2" = 1'-0"



9 | UNIT TYPE 6 KITCHEN ELEV.
 1/2" = 1'-0"



12 | UNIT TYPE F KITCHEN ELEV.
 1/2" = 1'-0"

SEE DRAWING A6.05 FOR
 REMOVABLE FRONT DETAILS

- TYPICAL UNIT STORAGE & BATHROOM ACCESSORIES LEGEND**
- 1. TYPICAL UNIT BEDROOM CLOSET
 (1) 2'-0" DEEP X 5'-0" WIDE BY 8'-0" HIGH
 - 1A. EFFICIENCY UNIT BEDROOM CLOSET
 (1) 2'-0" DEEP X 3'-0" WIDE BY 8'-0" HIGH
 - 2. LINEN STORAGE CLOSET
 (1) 1'-6" DEEP X 1'-8" (MIN) WIDE BY 8'-0" HIGH.
 PROVIDE WITH (4) SHELVES SPACED AS SHOWN ON 2/A6.01 YIELDS 10 SF MINIMUM OF SHELVING AREA. IN ADAAG AND ANSI TYPE A UNITS SPACE SHELVES AS SHOWN ON 3/A6.01
 - 3. COAT CLOSET
 (1) 2'-0" DEEP X 2'-0" DEEP BY 8'-0" HIGH.
 - 4. GENERAL STORAGE
 TYPICAL FINISHED CEILING HEIGHT IS 8'-0". EACH LINEAR FOOT OF GENERAL STORAGE CLOSET YIELDS 16 CUBIC FEET OF STORAGE. TOTAL CUBIC FEET HAS BEEN INDICATED ON EACH UNIT AS MEETING OR EXCEEDING 100 CUBIC FEET FOR 1 BEDROOM UNITS, 50 CUBIC FEET FOR EFFICIENCIES. SEE CLOSET AREA, SHOWN IN DARK GREY.
 - 5. SURFACE MOUNTED MEDICINE CABINET WITH LIGHT
 REFER TO SPECIFICATIONS
 - 6. NOT USED
 - 7. NOT USED
 - 8. 24" TOWEL BAR
 - 9. 18" TOWEL BAR
 - 10. TAYMOR 01-9404 TOWEL RING
 - 11. TOILET PAPER HOLDER
- ▼ = WALL WHERE SHOWER CONTROLS & SHOWER HEAD MUST BE LOCATED

Prepared For:
**Westbrook Development
 Corp. & Millbrook Estates
 LLP**

Consultant:

ARCHETYPE
 architects
 48 Union Wharf Portland, Maine 04101
 (207) 772-0022 ARCHETYPE@ARCHETYPEPA.COM

Project:

MILLBROOK ESTATES
 300 East Bridge Street
 Westbrook, ME 04092

Revisions:

Date:
10 AUG 2015

Scale: As indicated
UNIT PLANS
A6.01