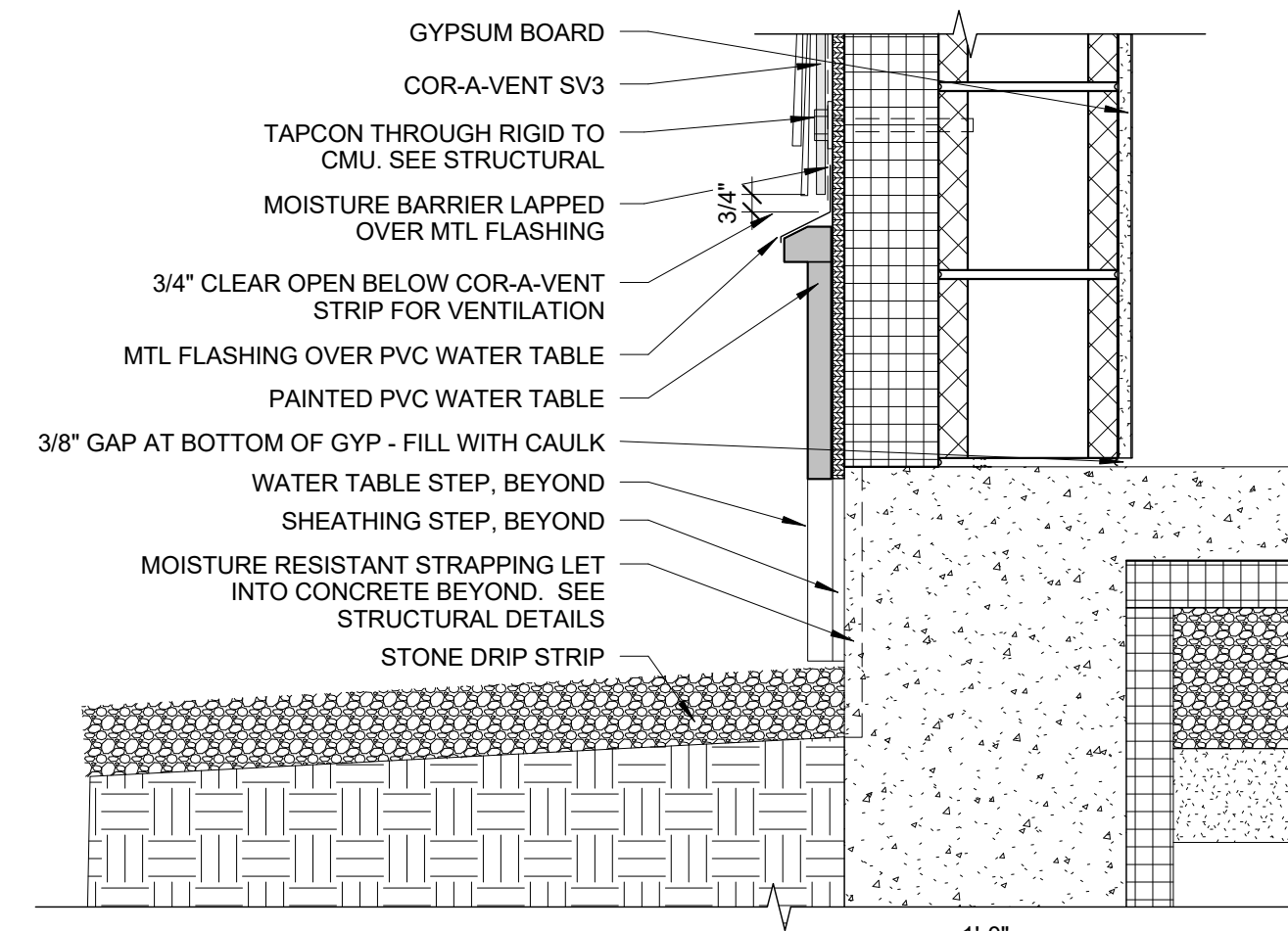
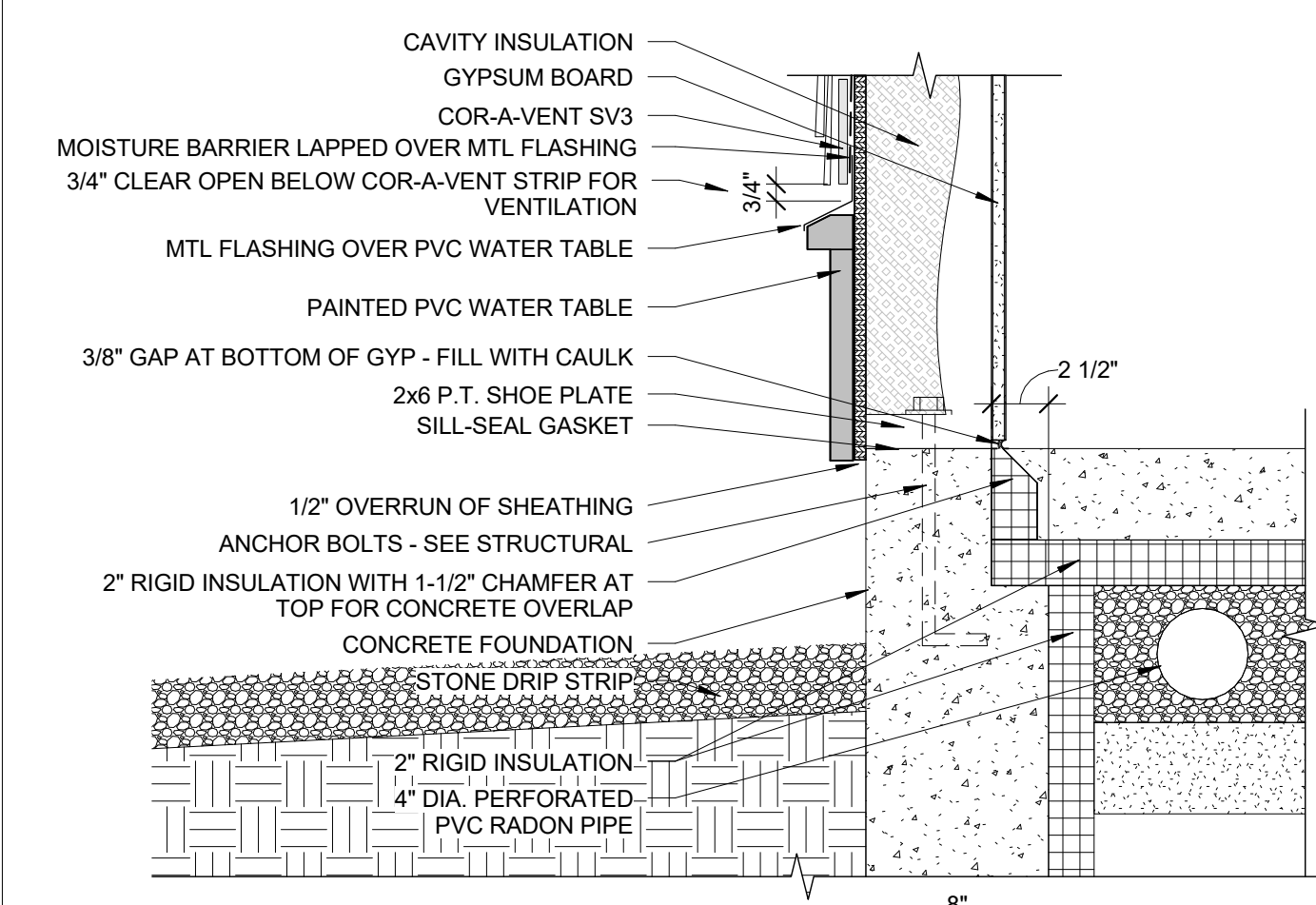


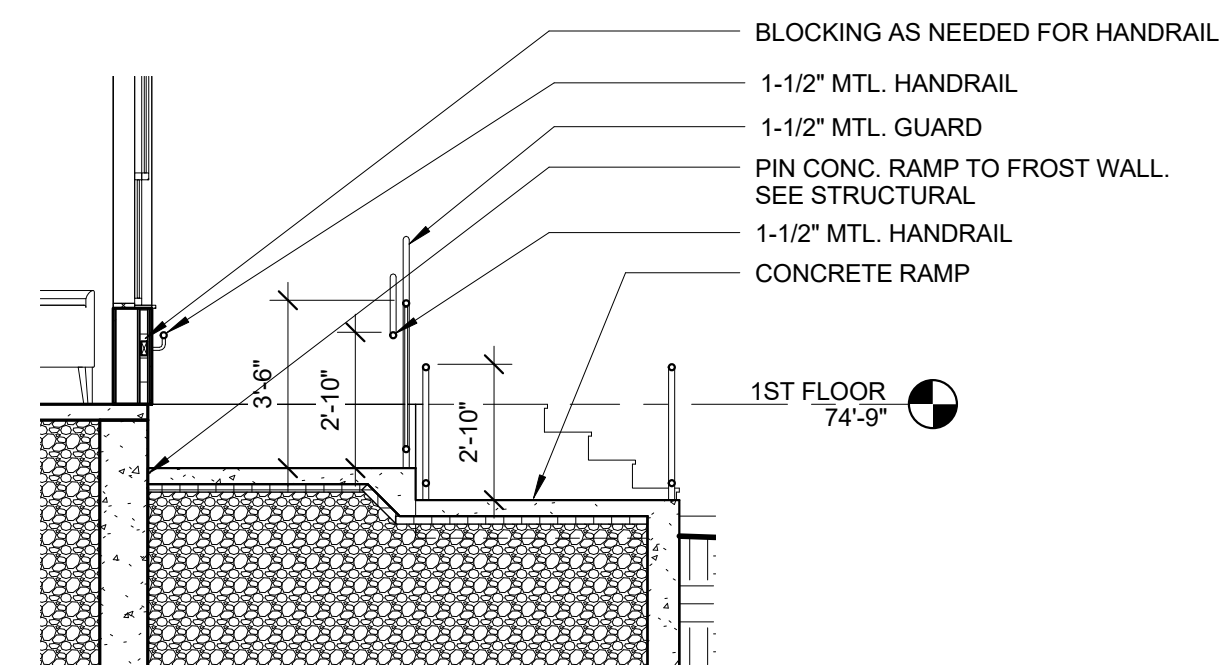
**12** ROOF CANOPY DETAIL  
 1/2" = 1'-0"



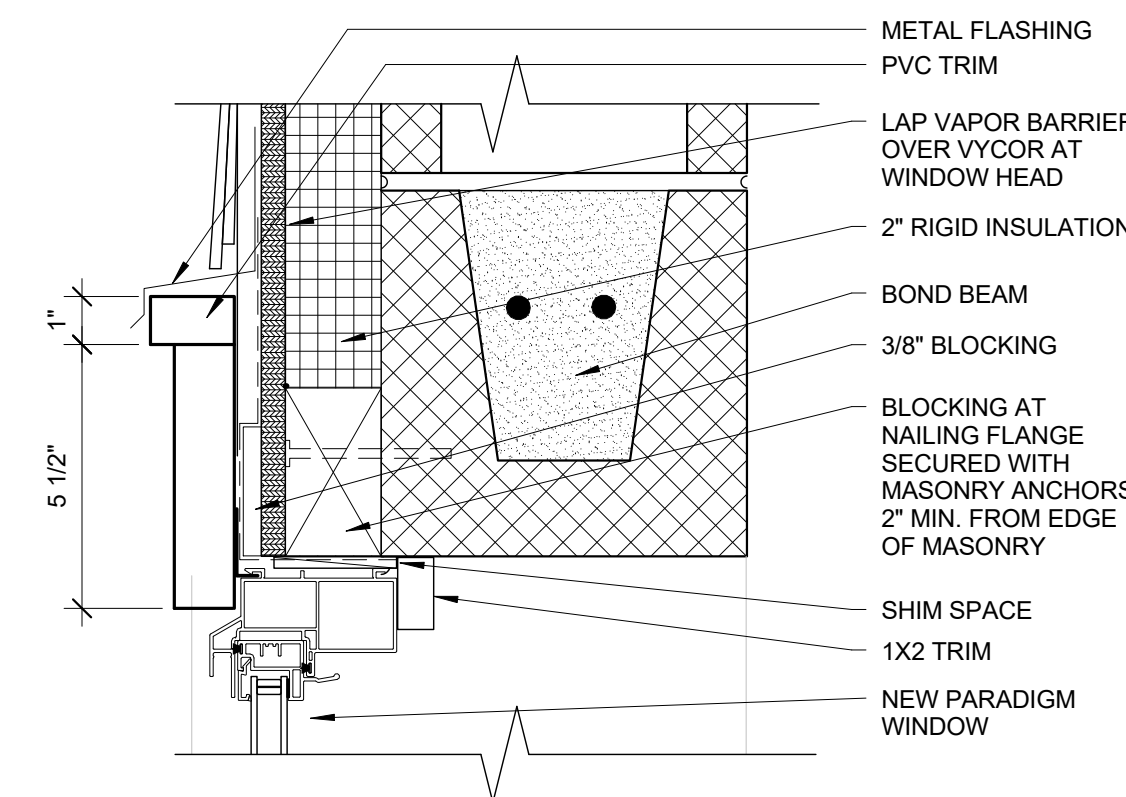
**11** BOTTOM OF WALL DETAIL AT CMU  
 1 1/2" = 1'-0"



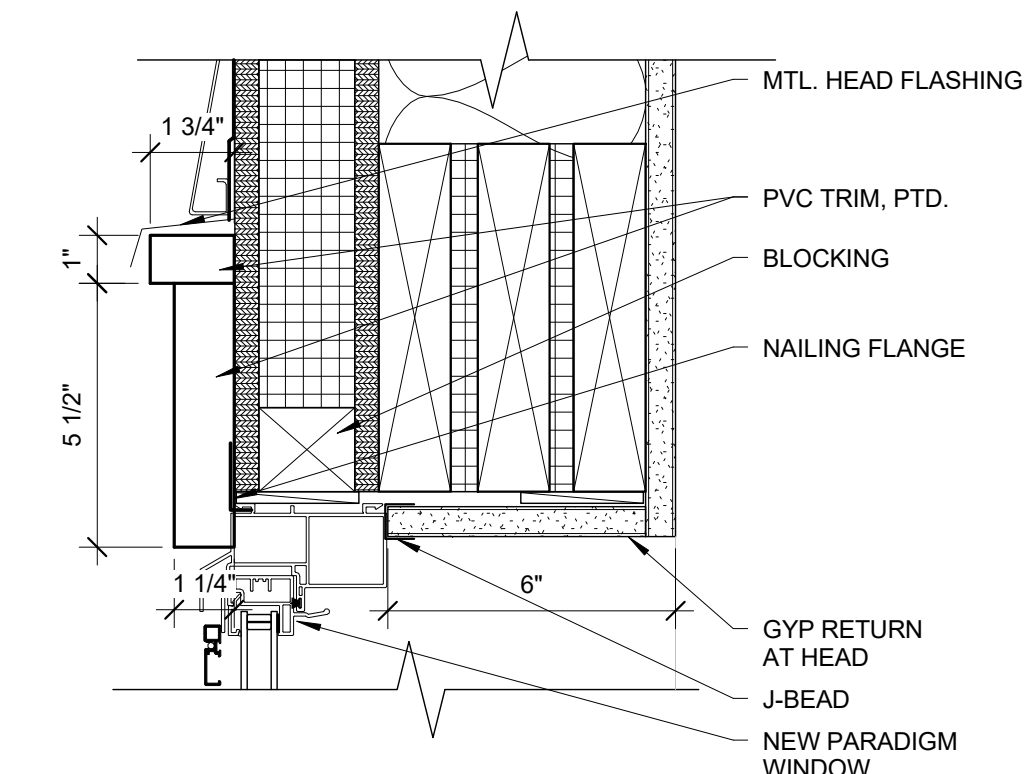
**10** TYP. BOTTOM OF WALL DETAIL  
 1 1/2" = 1'-0"



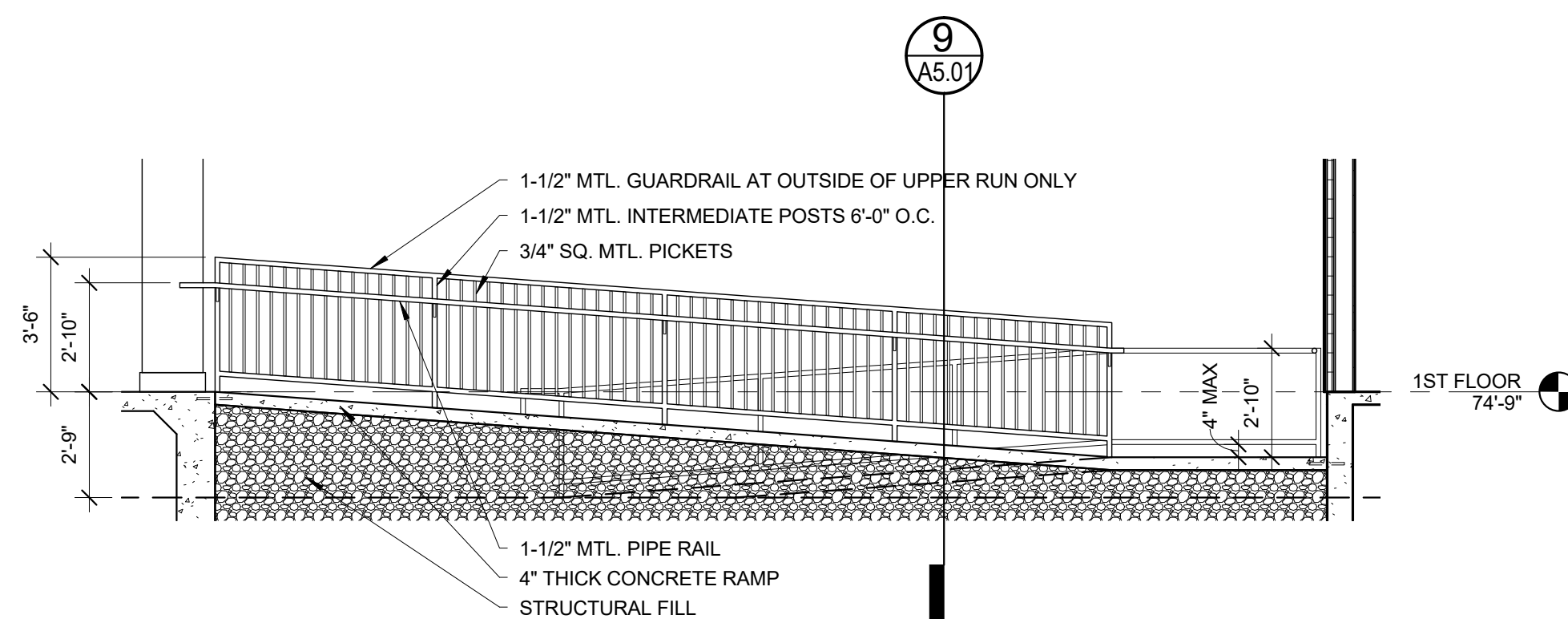
**9** RAMP SECTION  
 1/4" = 1'-0"



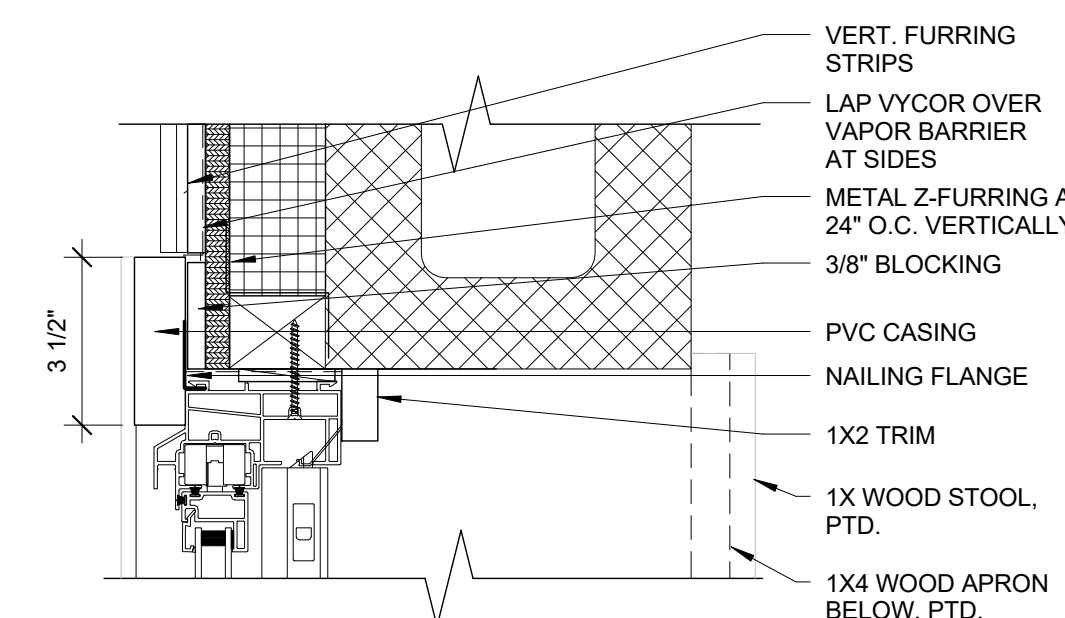
**6** WINDOW HEAD SECTION AT CMU WALL1  
 3" = 1'-0"



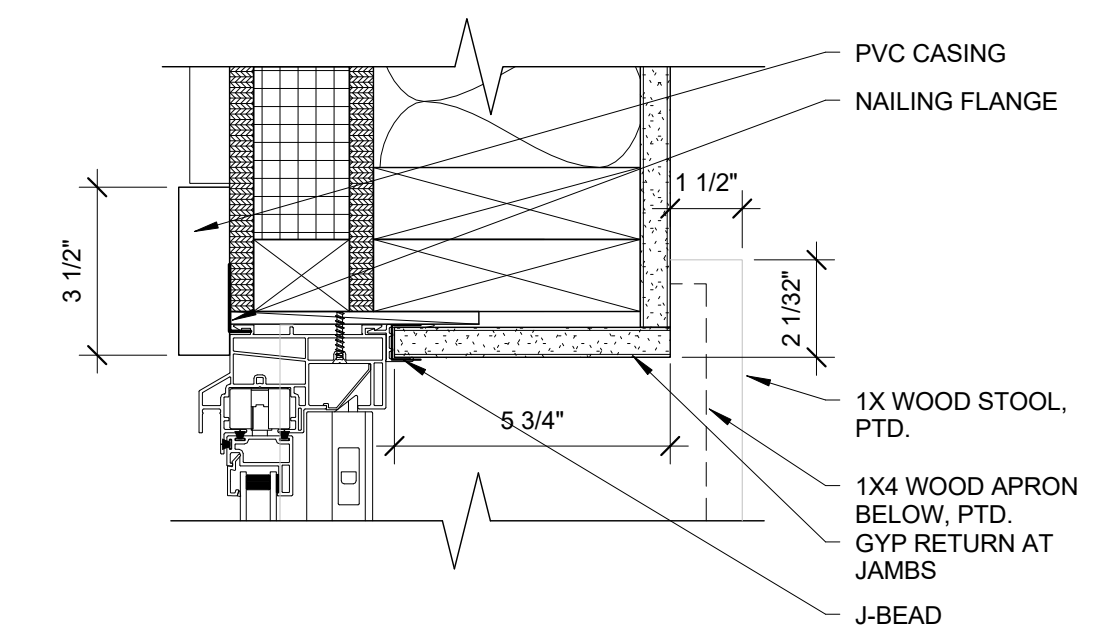
**3** TYP. WINDOW HEAD SECTION1  
 3" = 1'-0"



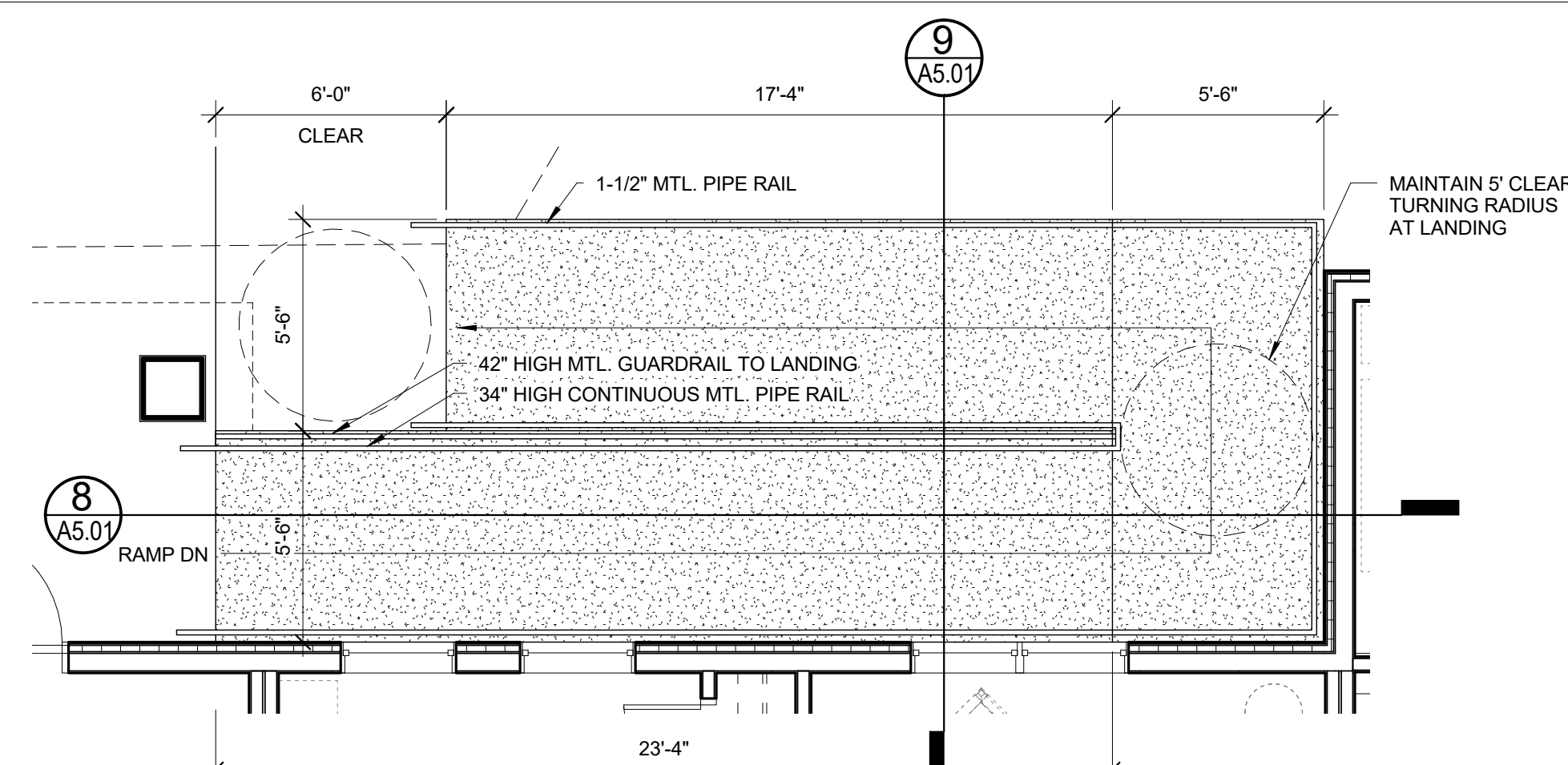
**8** RAMP SECTION  
 1/4" = 1'-0"



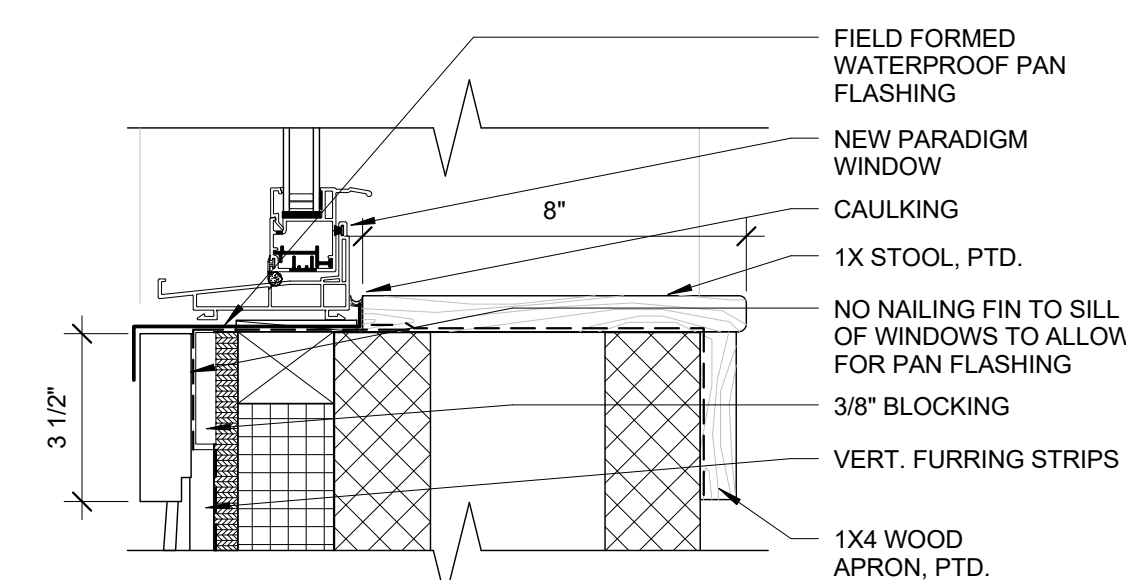
**5** WINDOW JAMB SECTION AT CMU WALL1  
 3" = 1'-0"



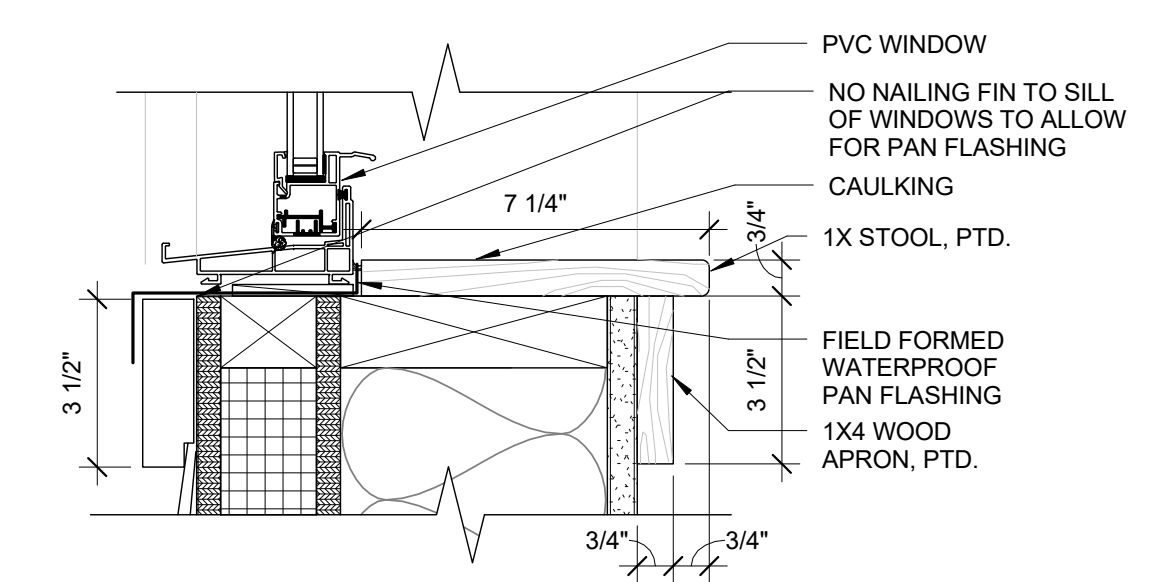
**2** TYP. WINDOW JAMB SECTION1  
 3" = 1'-0"



**7** ENLARGED RAMP PLAN  
 1/4" = 1'-0"



**4** WINDOW SILL SECTION AT CMU WALL1  
 3" = 1'-0"



**1** TYP. WINDOW SILL SECTION1  
 3" = 1'-0"

Prepared For:  
**Westbrook Development Corp. & Millbrook Estates LLP**  
 Address  
 City, State

Consultant:  
**ARCHETYPE architects**  
 48 Union Wharf Portland, Maine 04101  
 (207) 772-6022 ARCHETYPE@ARCHETYPEPA.COM

Architect:  
**MILLBROOK ESTATES**  
 300 East Bridge Street  
 Westbrook, ME 04092

Revisions:

Scale: As indicated

Date: 10 AUG 2015

**A5.01**

DETAILS