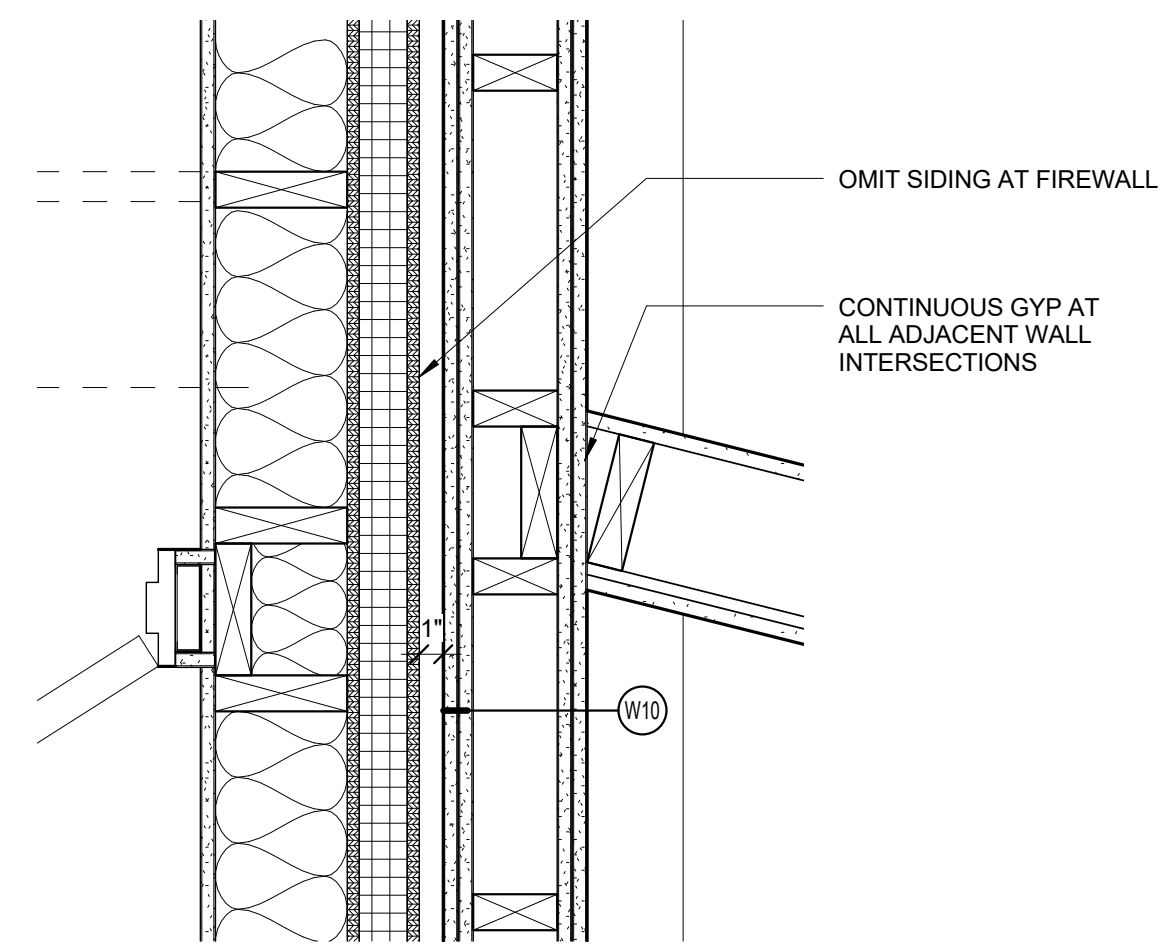
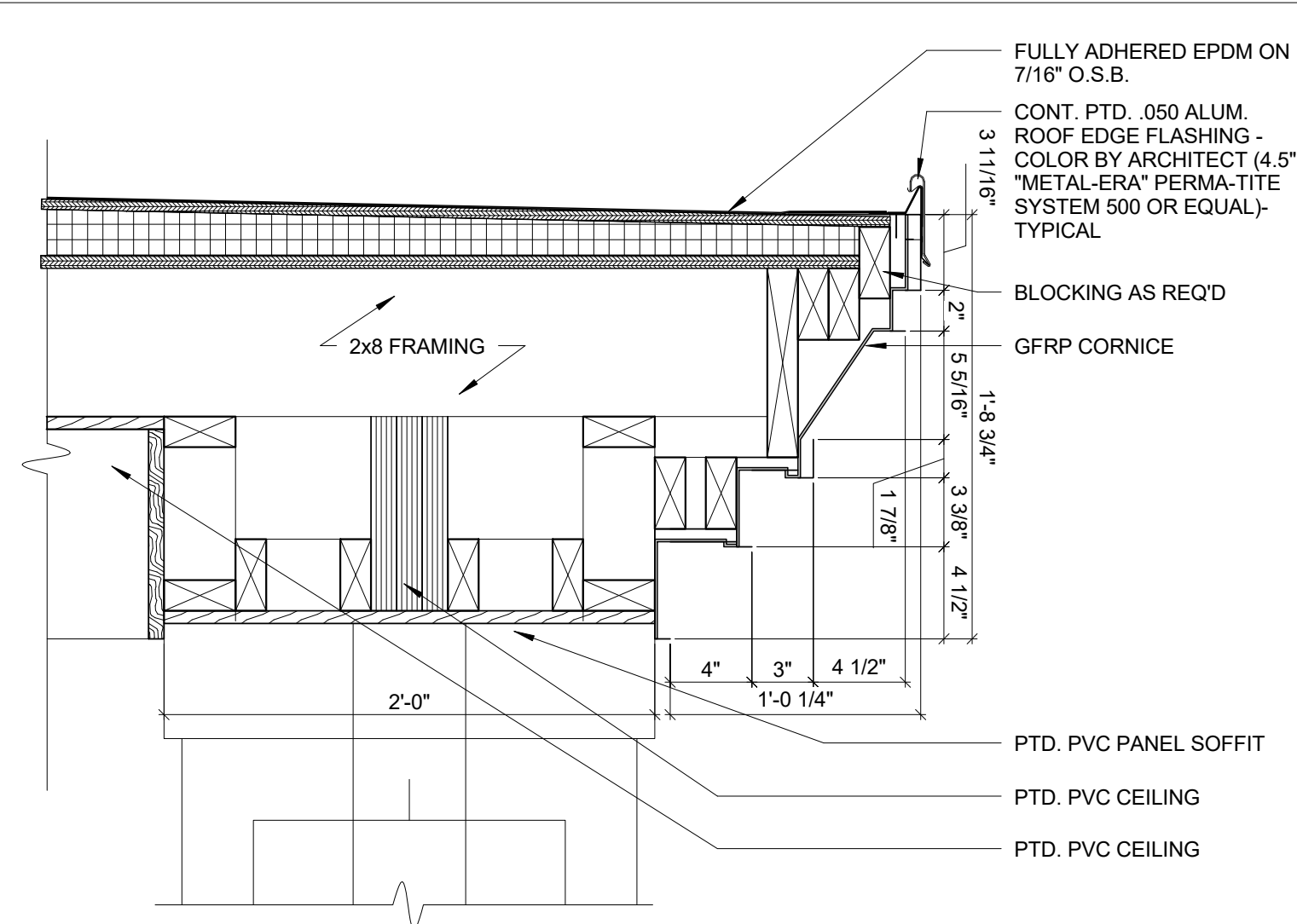


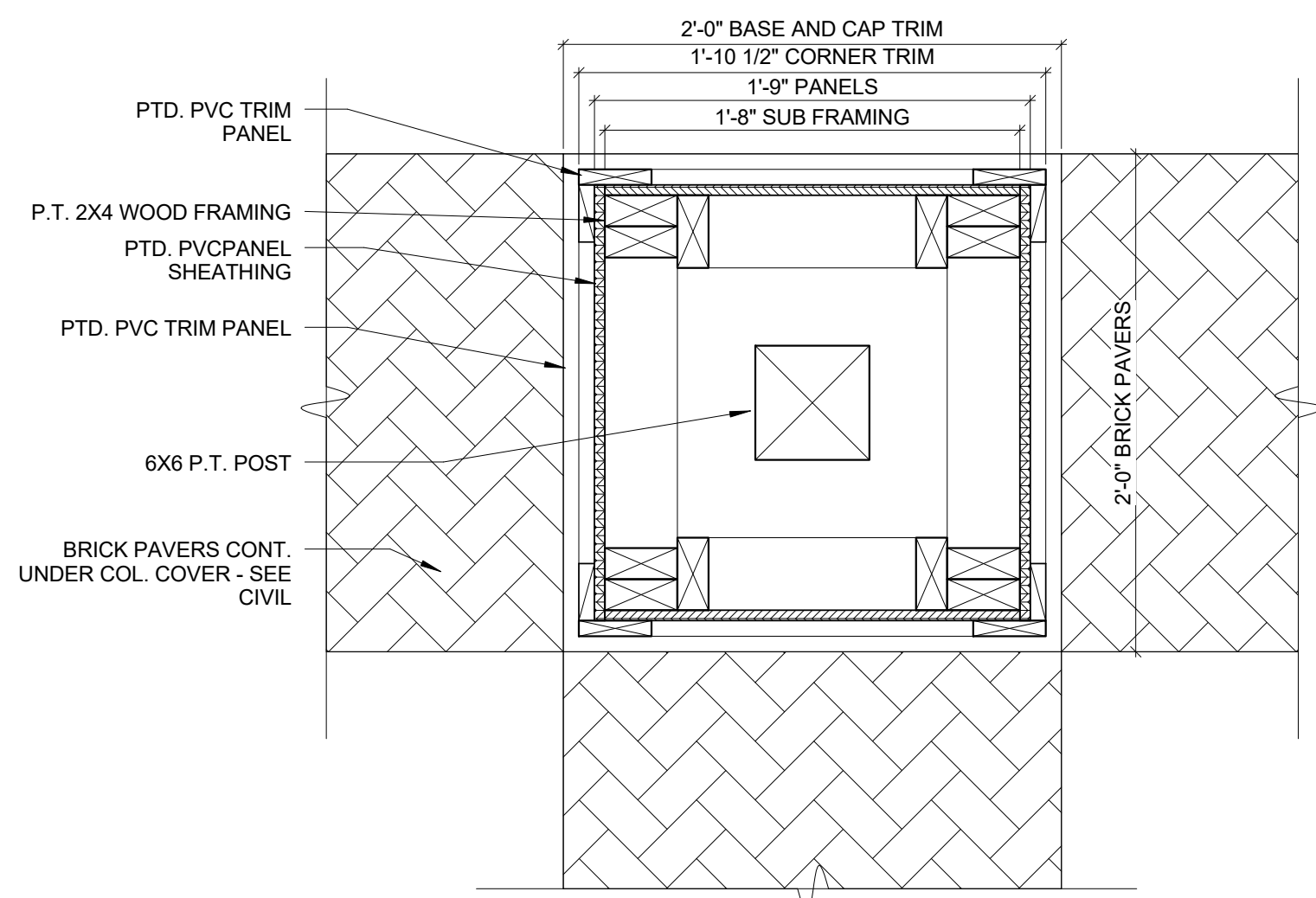
11 EXPANSION JOINT AT CONNECTOR ROOF
1 1/2" = 1'-0"



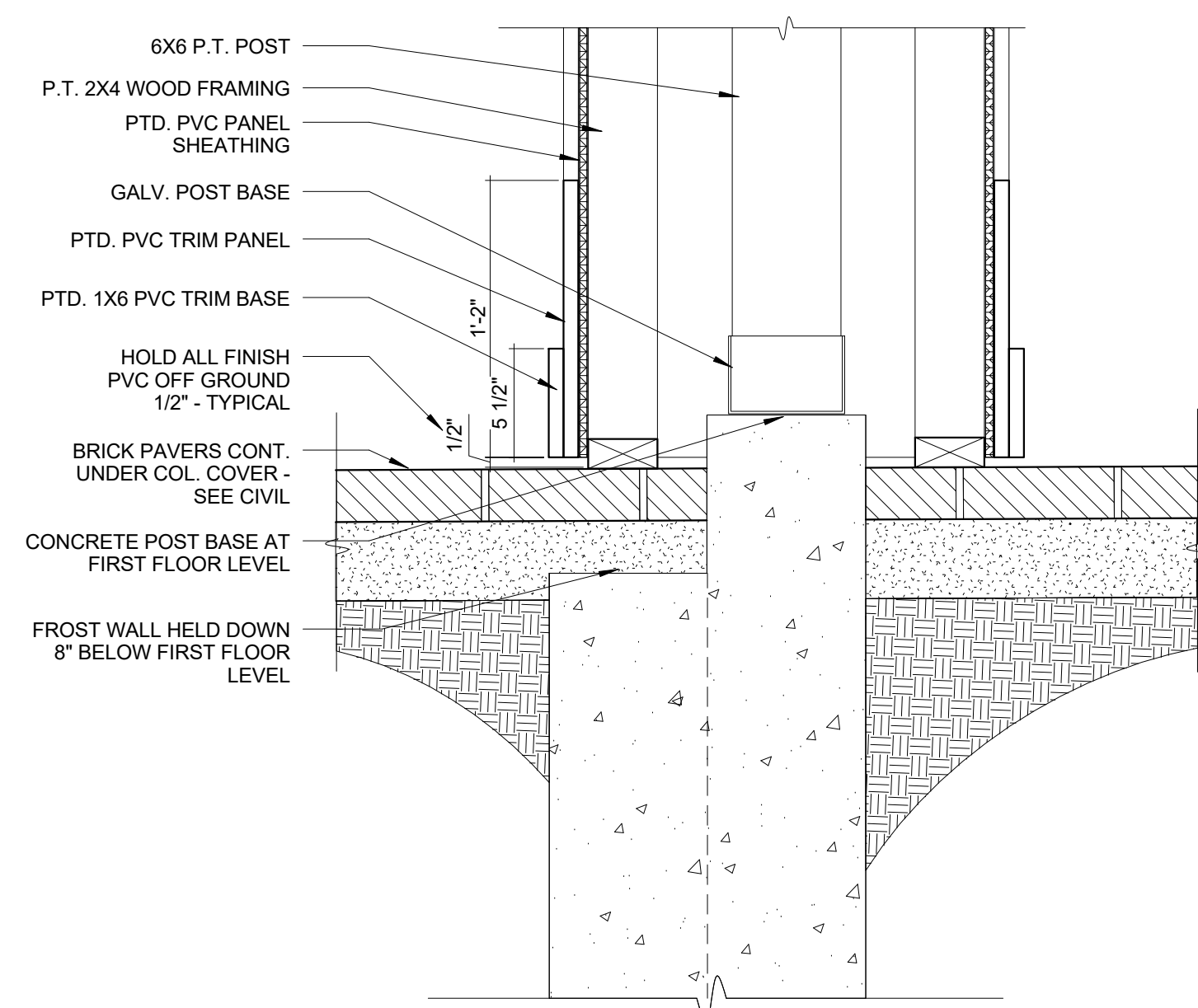
12 PLAN DETAIL AT FIREWALL
1 1/2" = 1'-0"



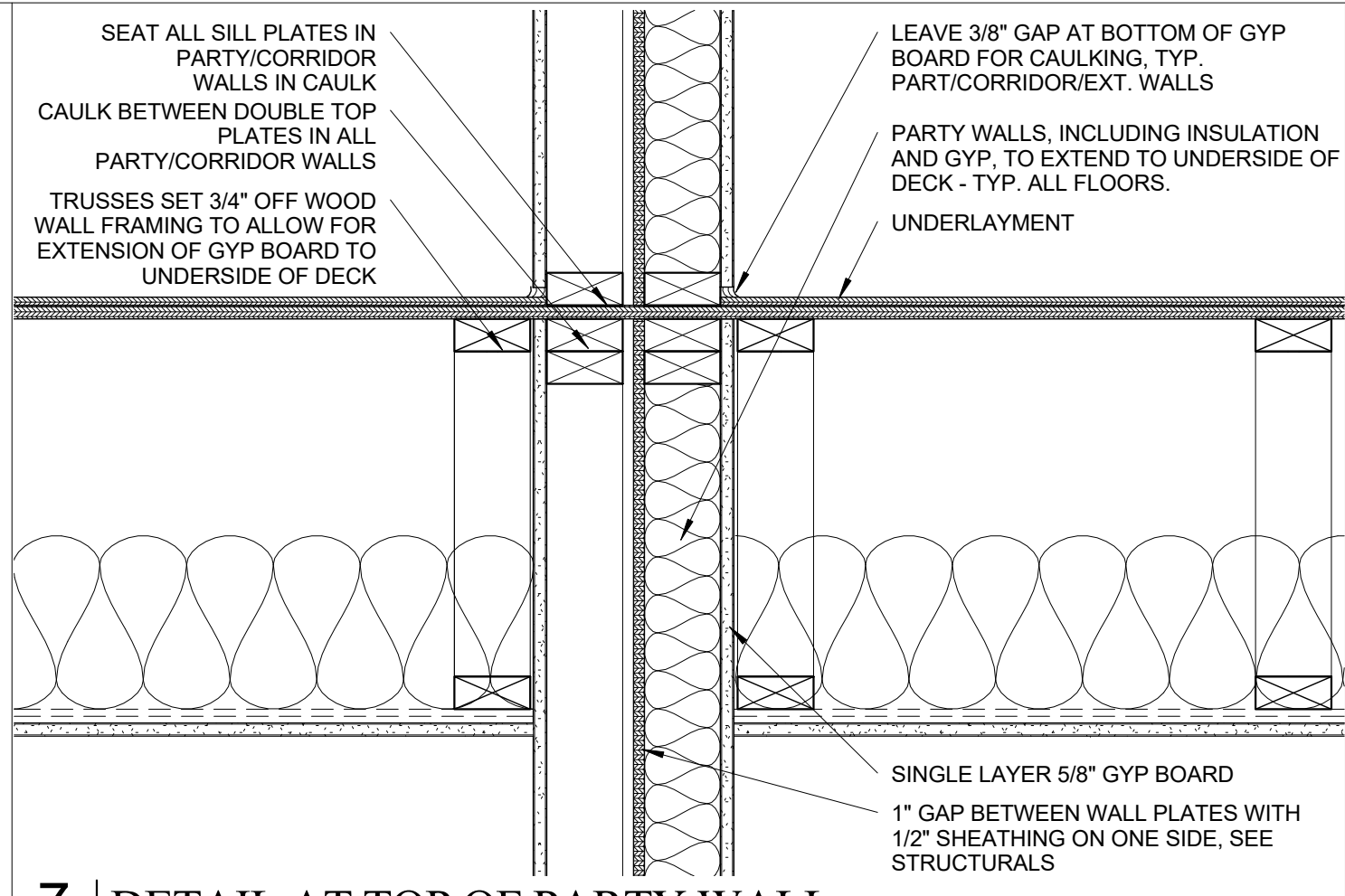
10 PORCH ROOF EAVE DETAIL
1 1/2" = 1'-0"



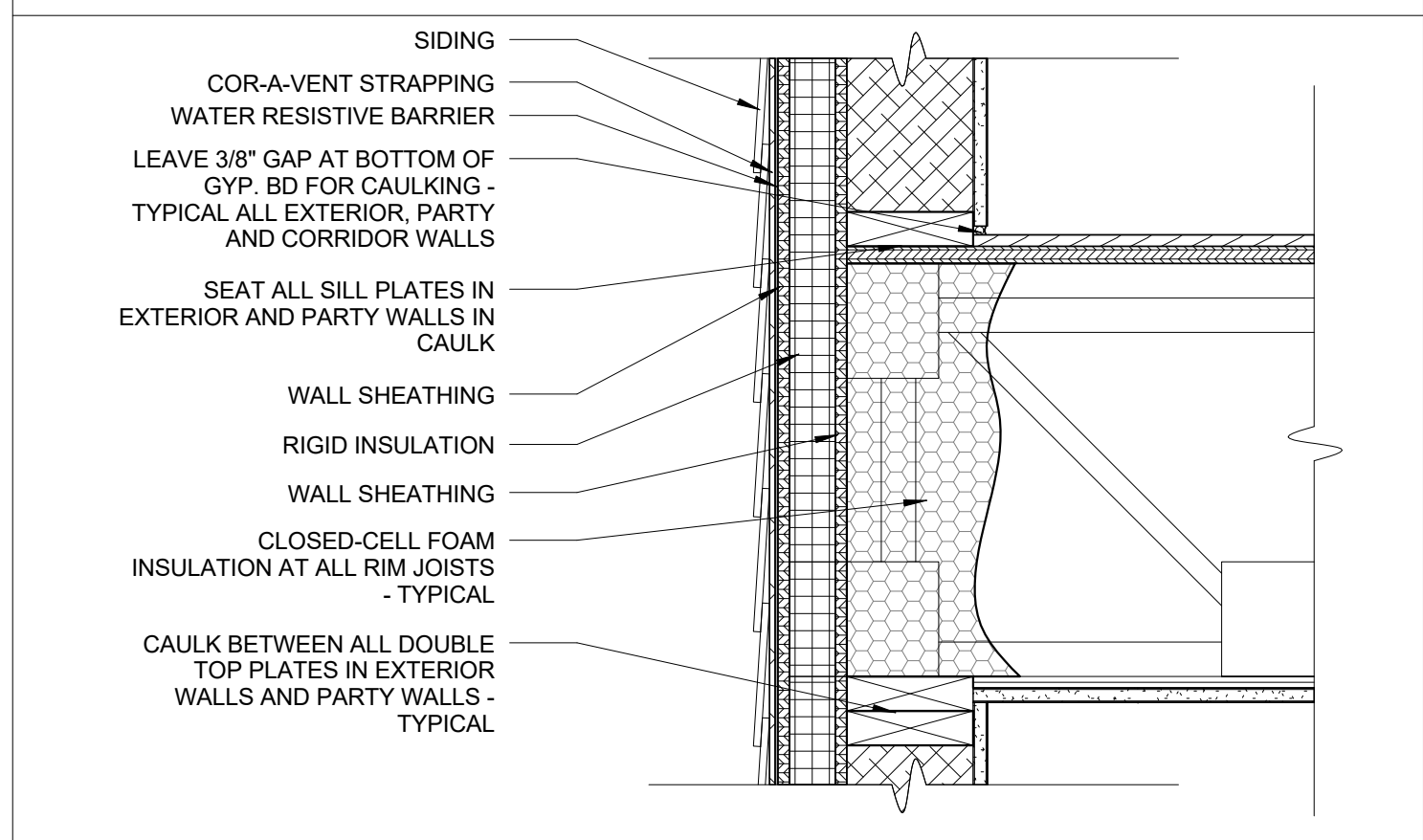
9 PORCH COLUMN COVER PLAN DETAIL
1 1/2" = 1'-0"



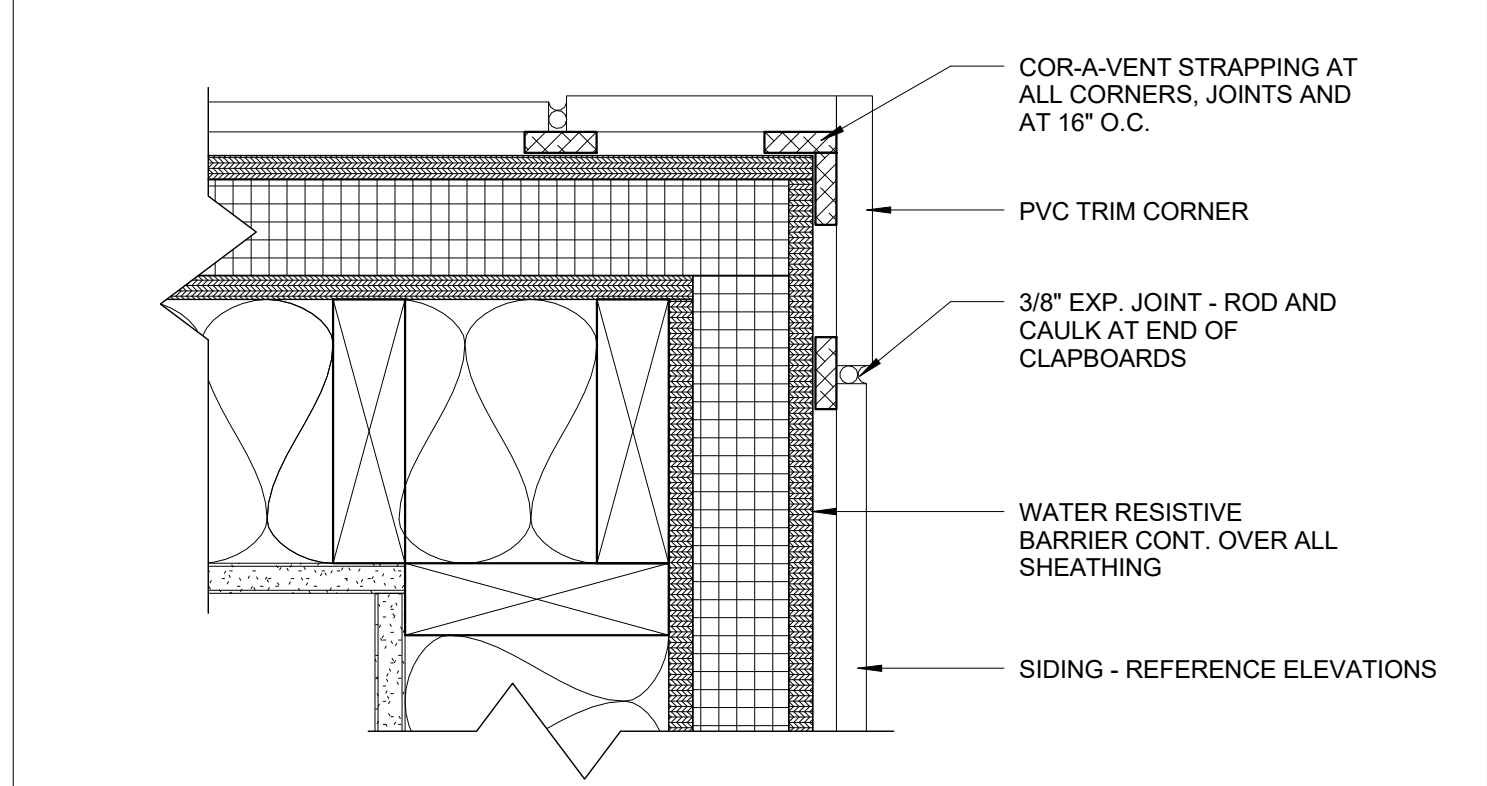
8 PORCH COLUMN COVER BASE DETAIL
1 1/2" = 1'-0"



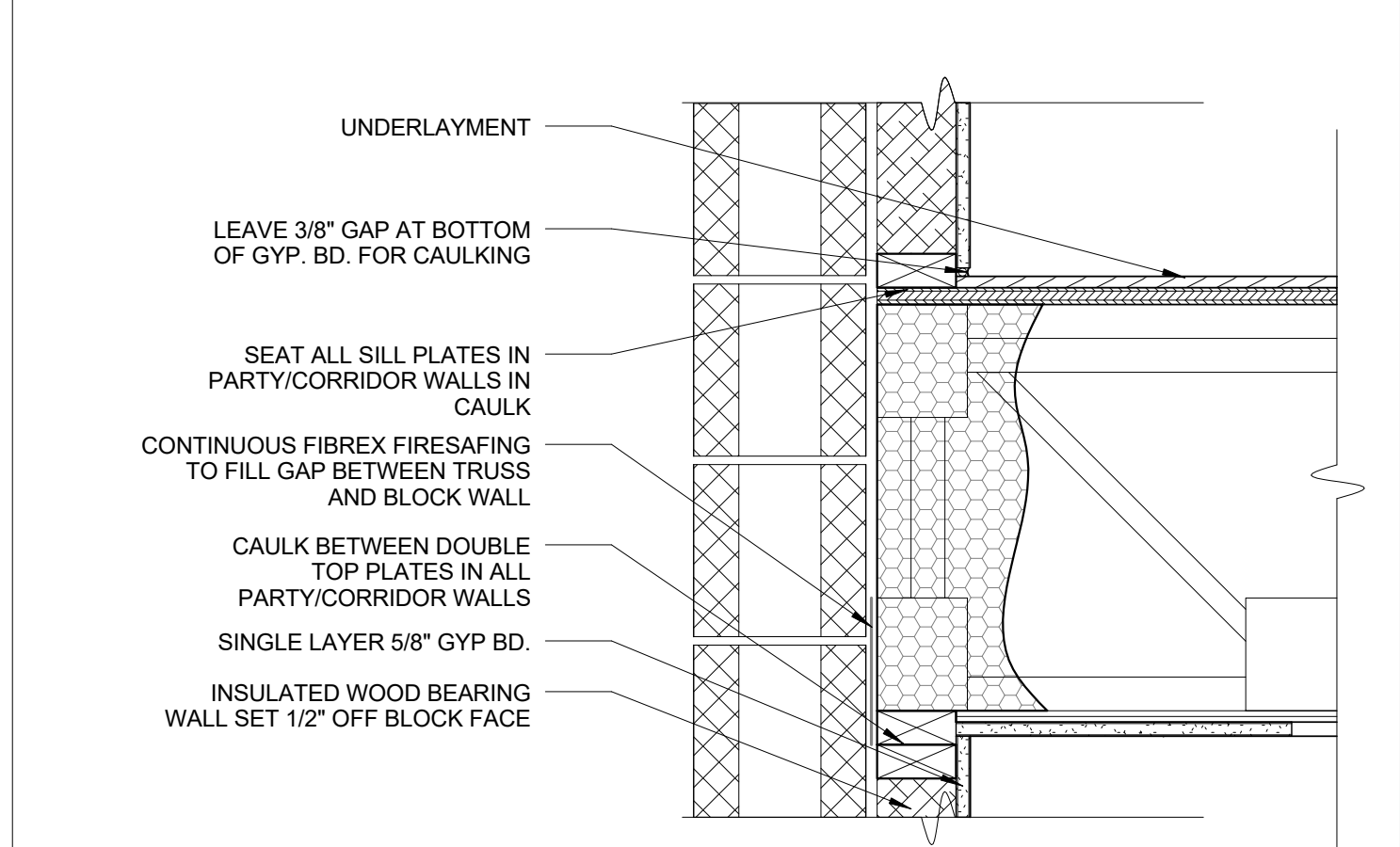
7 DETAIL AT TOP OF PARTY WALL
1 1/2" = 1'-0"



6 TYPICAL RIM JOIST DETAIL
1 1/2" = 1'-0"



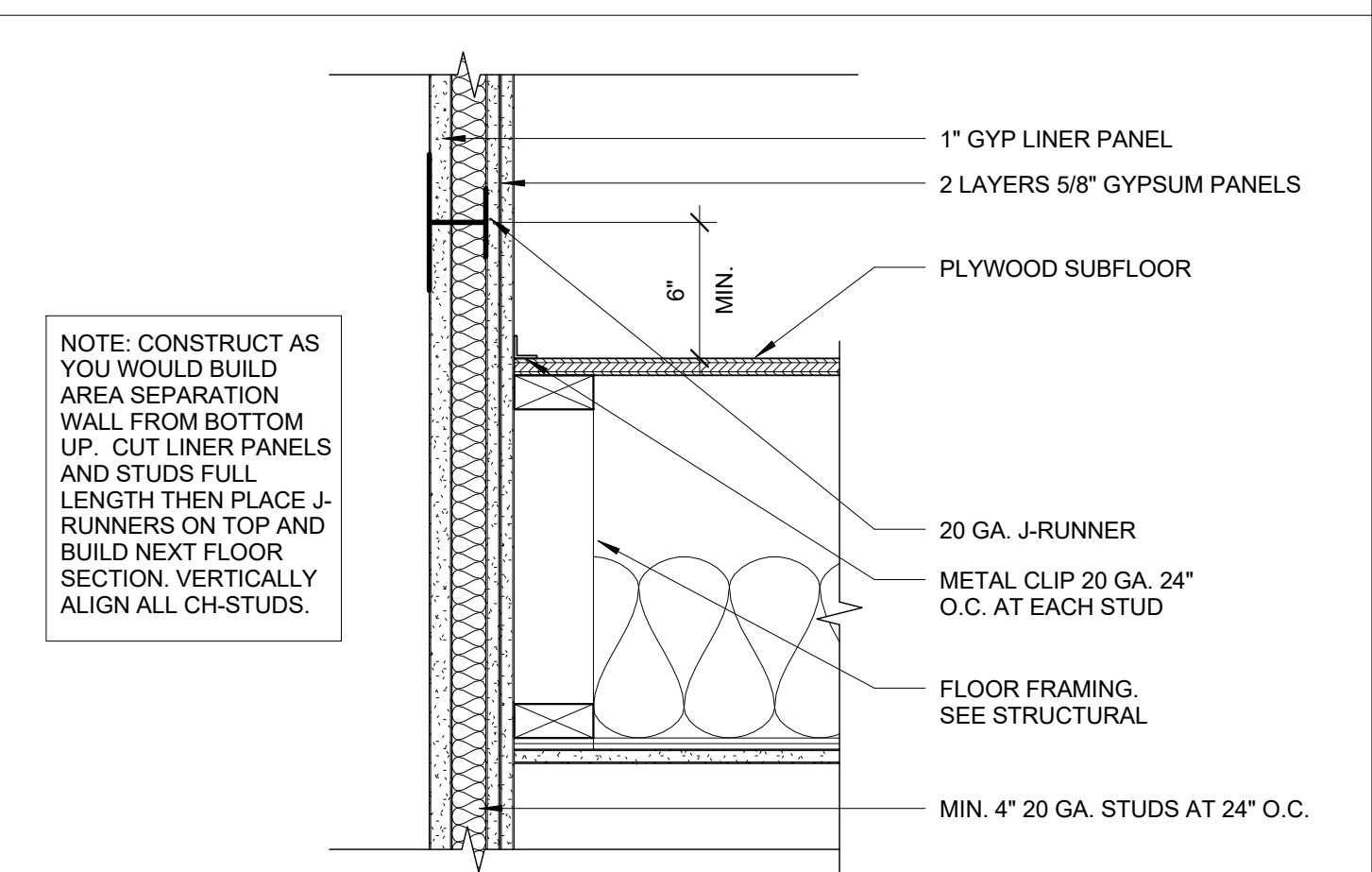
5 TYPICAL OUTSIDE CORNER DETAIL
3" = 1'-0"



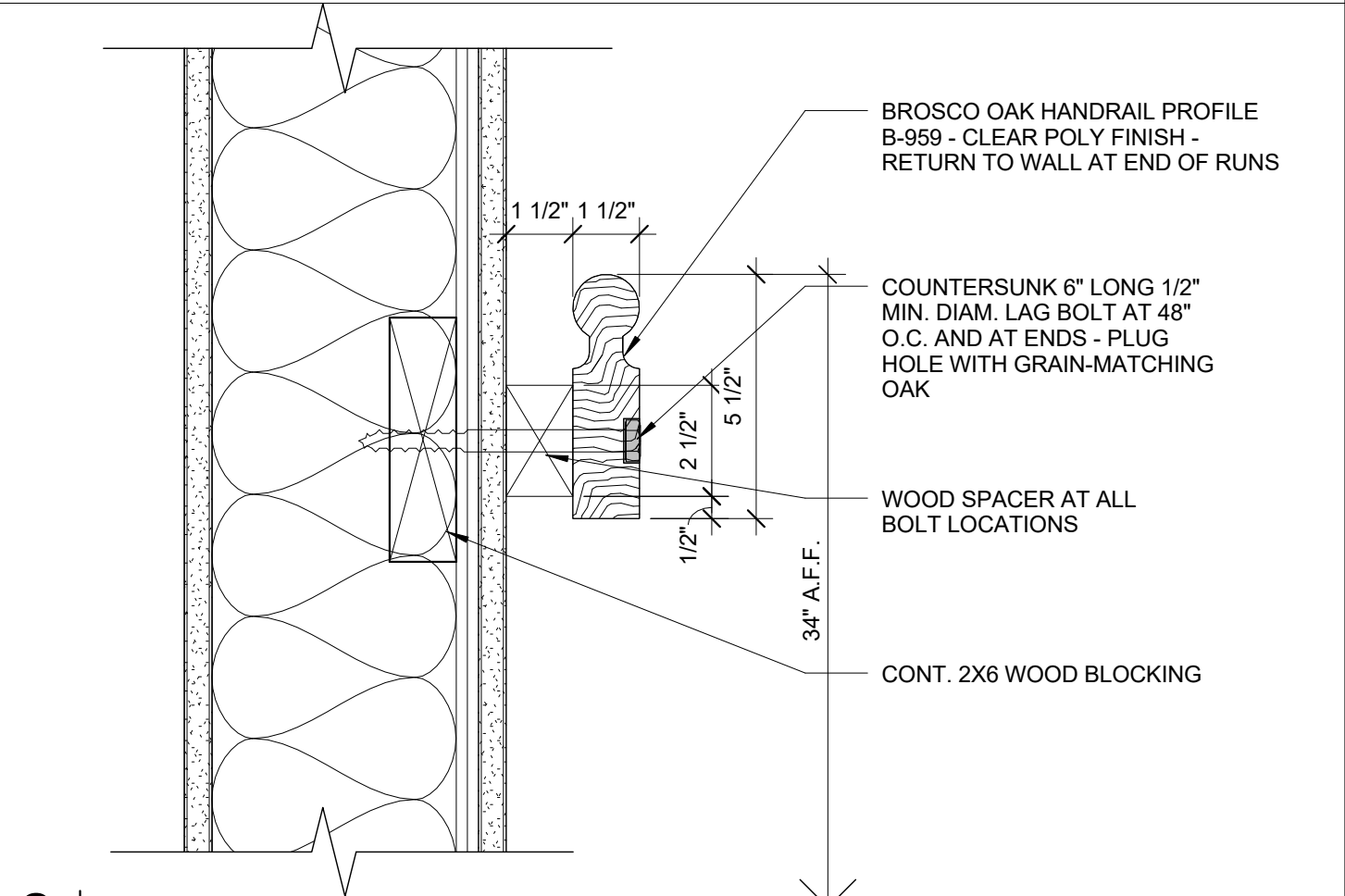
4 WOOD FRAMING FIRESTOPPING DETAIL
1 1/2" = 1'-0"



3 SHAFTWALL SECTION AT DECK
1 1/2" = 1'-0"



2 CORRIDOR HANDRAIL DETAIL
3" = 1'-0"



1 WALL SECTION - CORRIDOR
1 1/2" = 1'-0"

Prepared For:
Westbrook Development Corp. & Millbrook Estates LLP
Address
City, State

Consultant:
ARCHETYPE architects
48 Union Wharf Portland, Maine 04101
ARCHETYPE@ARCHETYPEA.COM
(207) 772-6022

Architect:
MILLBROOK ESTATES
300 East Bridge Street
Westbrook, ME 04092

Revisions:

Date: **10 AUG 2015**
Scale: **As indicated**
DETAILS

A5.00