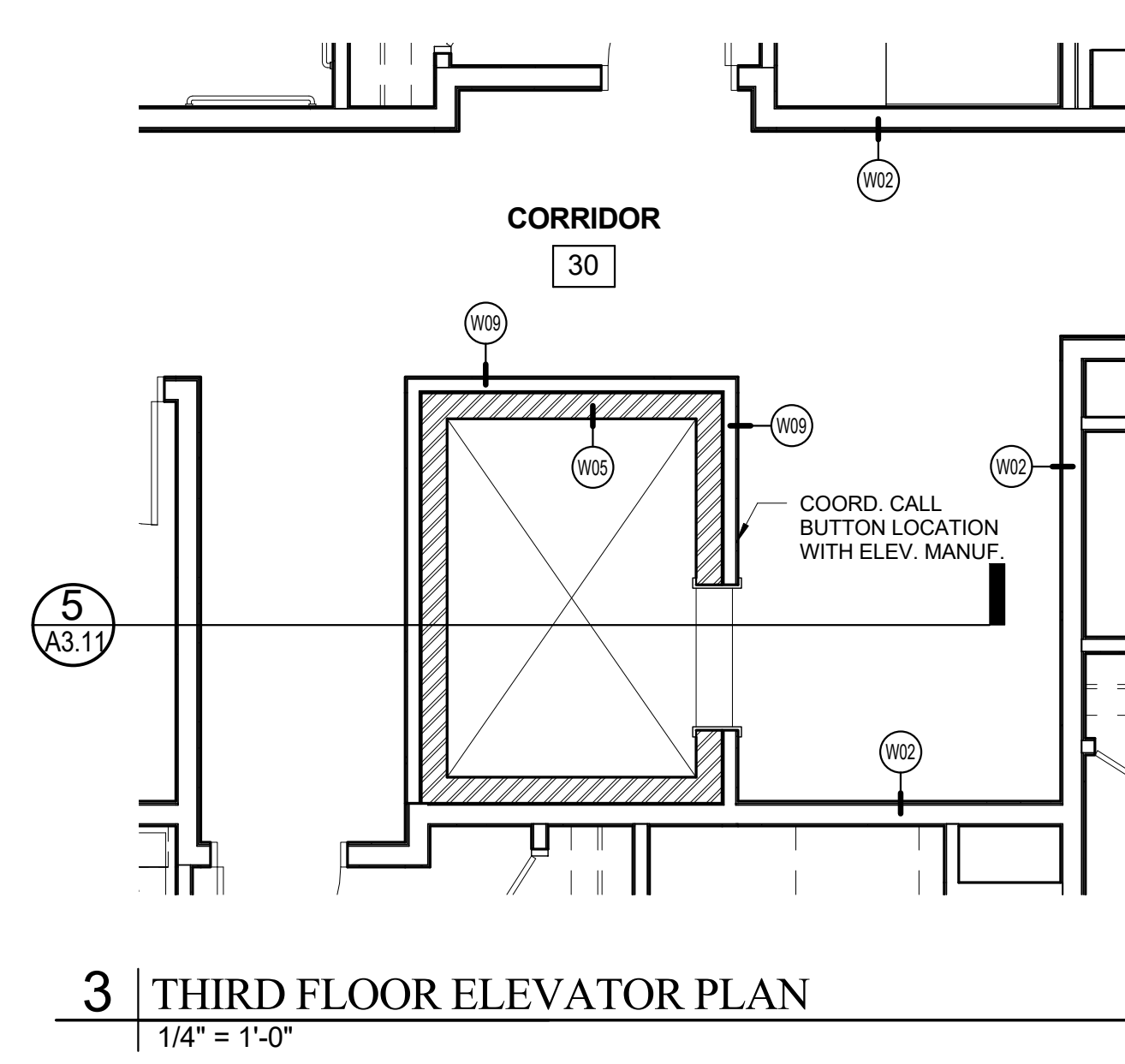
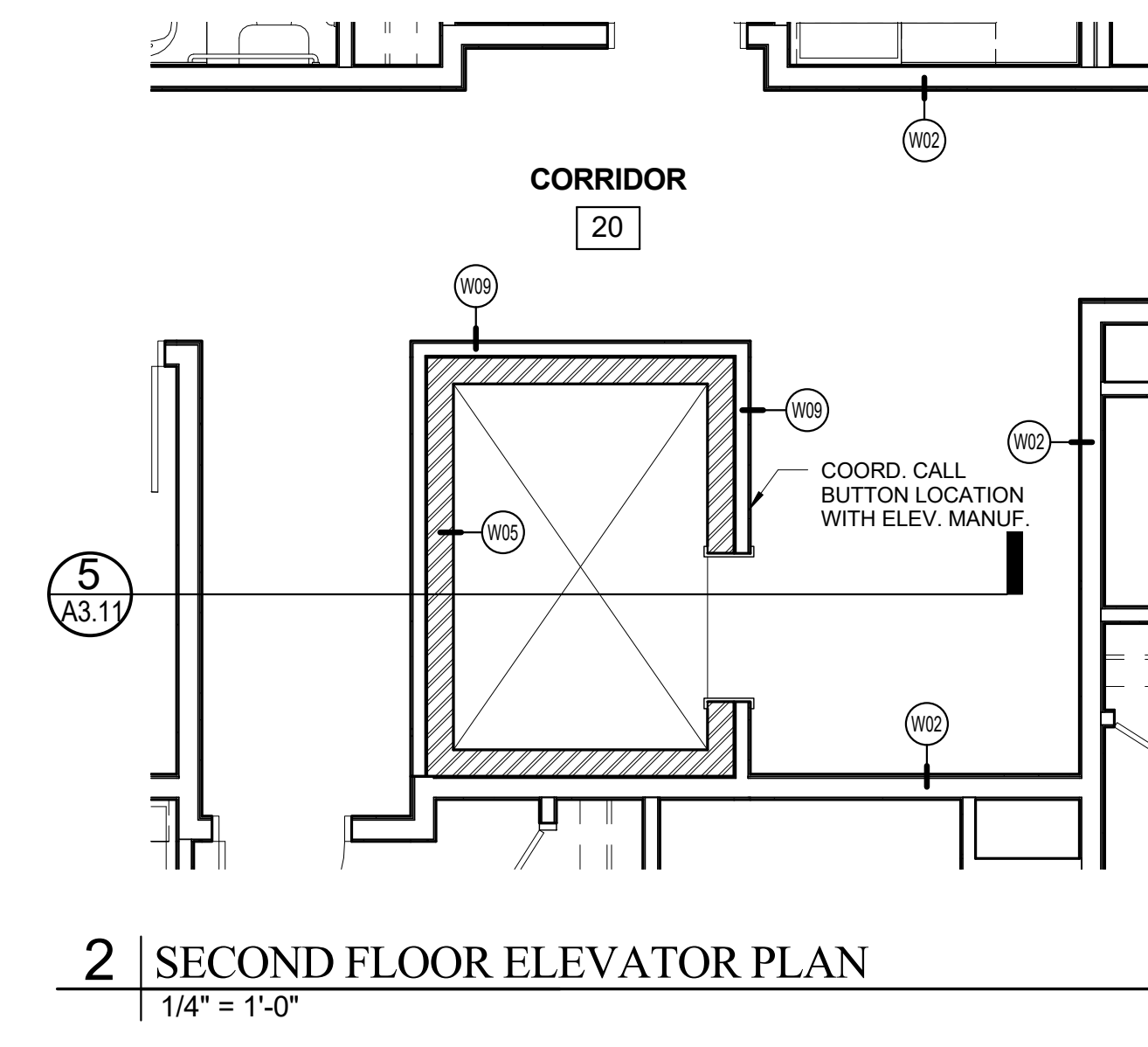


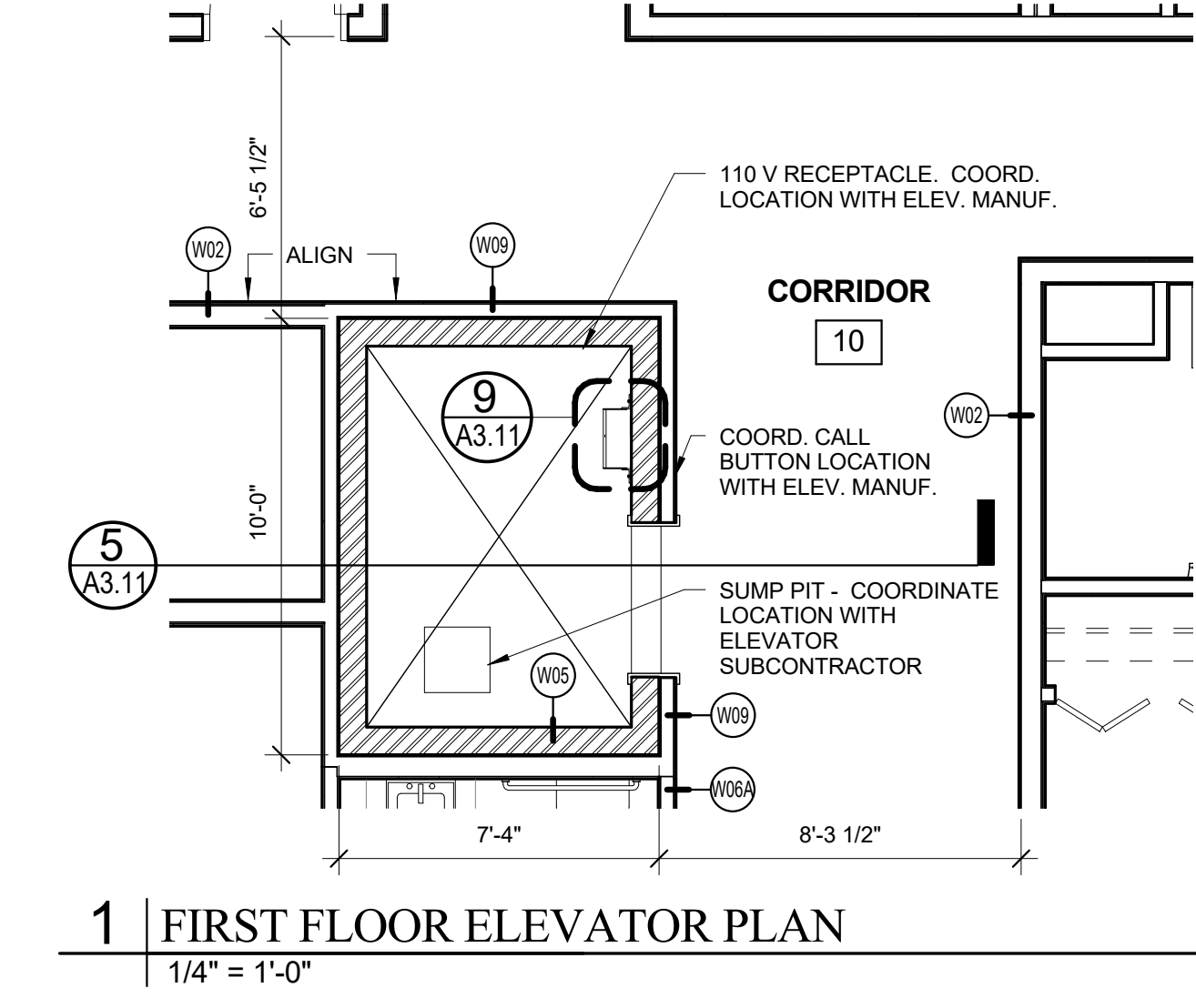
8 | ELEVATOR SHAFT DETAIL AT ROOF PENETRATION
1" = 1'-0"



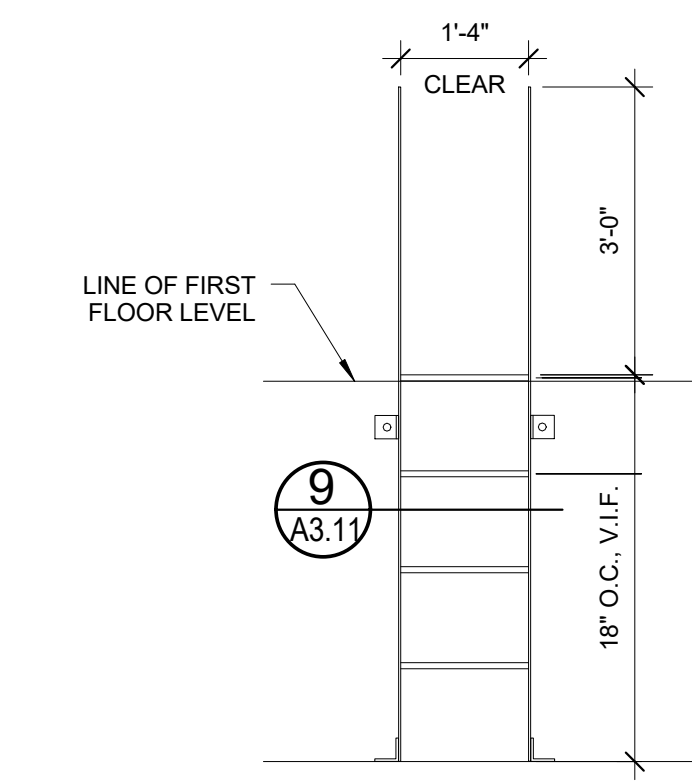
3 | THIRD FLOOR ELEVATOR PLAN
1/4" = 1'-0"



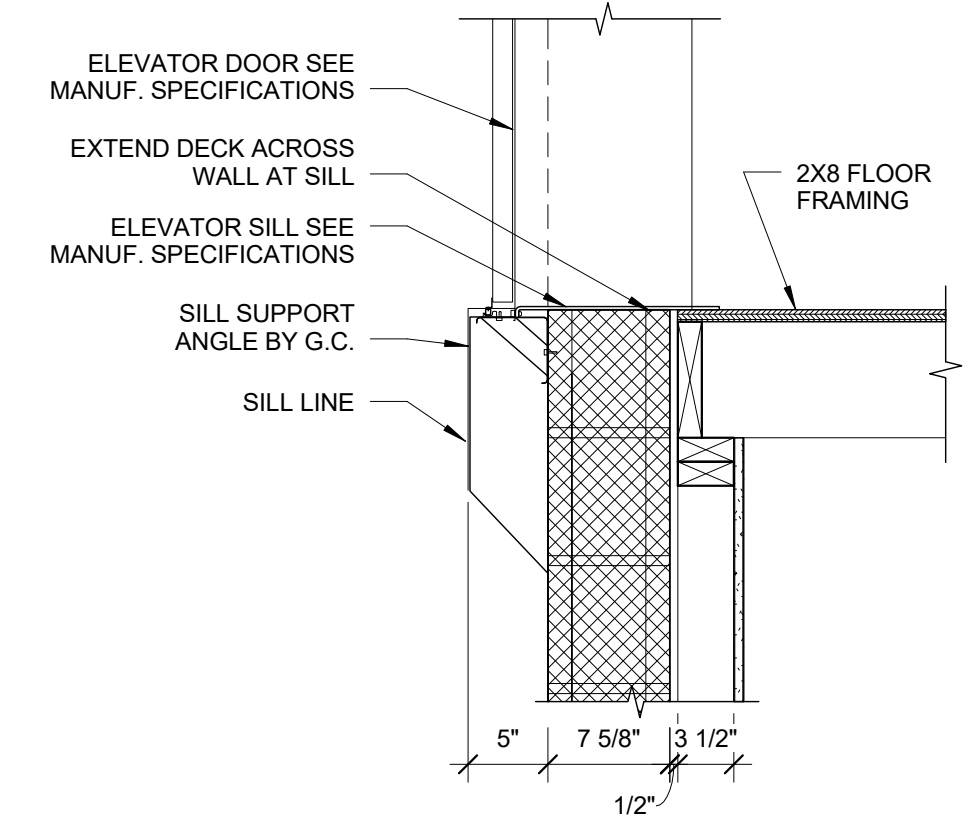
2 | SECOND FLOOR ELEVATOR PLAN
1/4" = 1'-0"



1 | FIRST FLOOR ELEVATOR PLAN
1/4" = 1'-0"

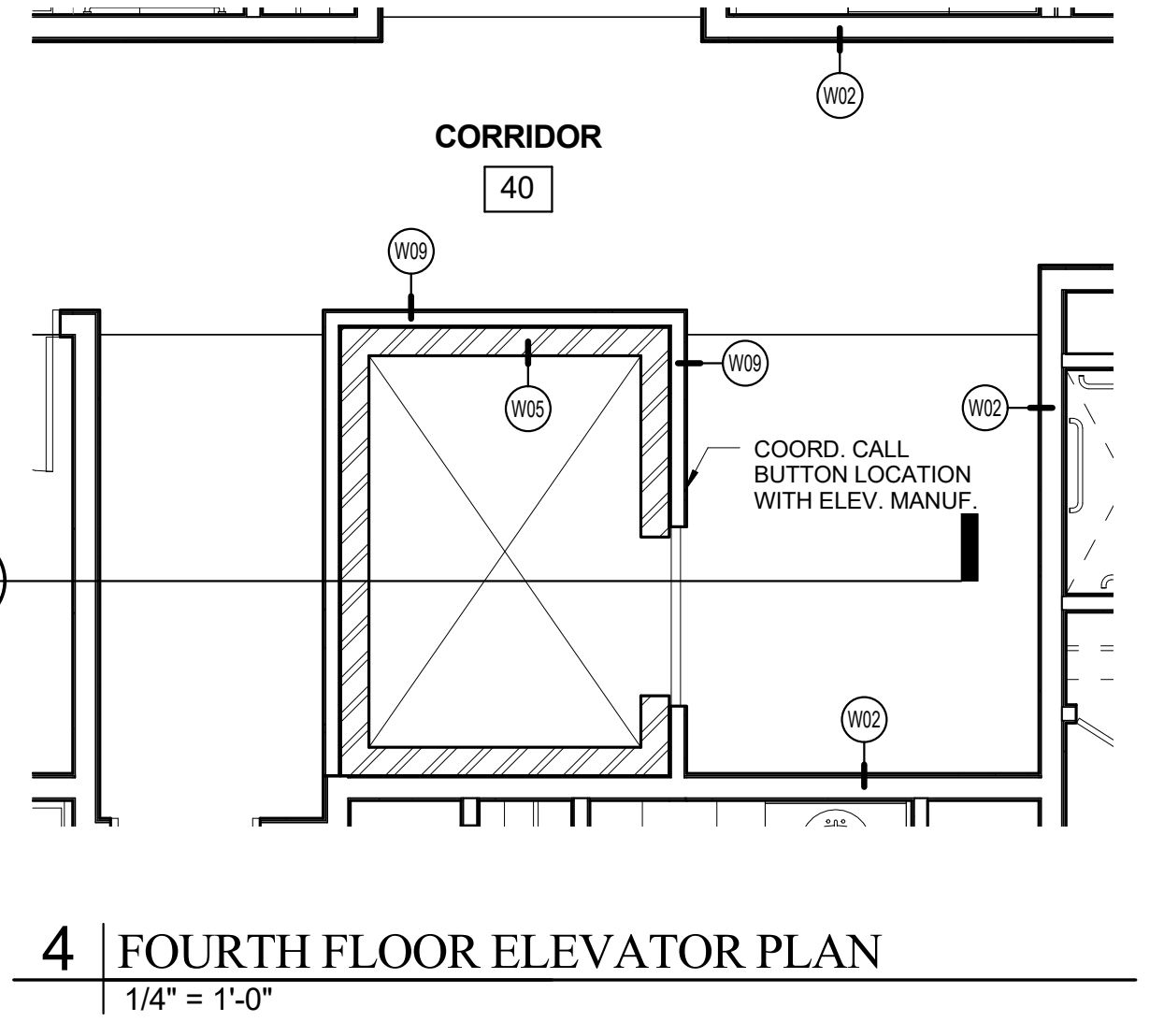


10 | ELEVATOR PIT LADDER ELEVATION
1/2" = 1'-0"

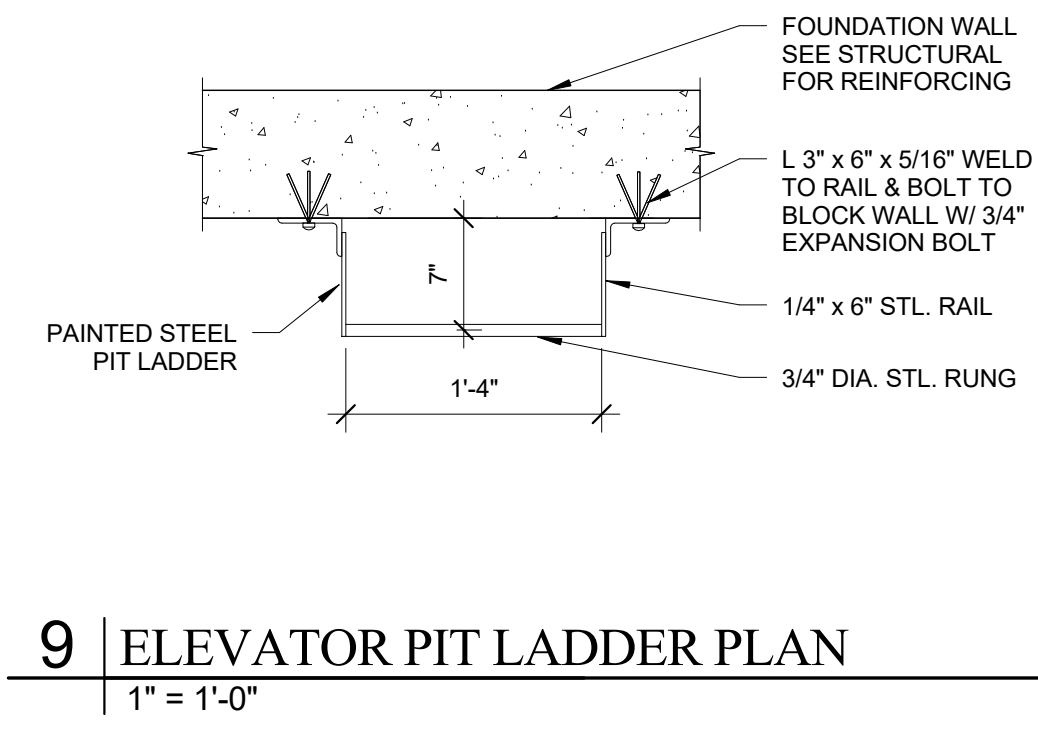


7 | ELEVATOR DOOR THRESHOLD
1" = 1'-0"

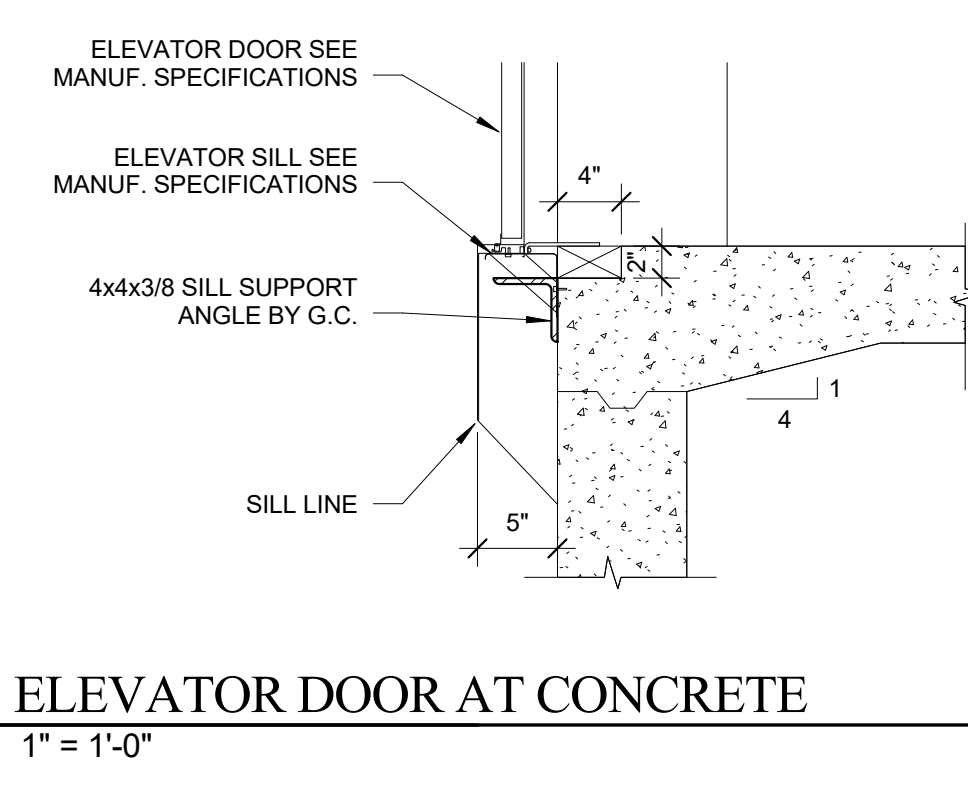
5 | ELEVATOR SECTION
1/4" = 1'-0"



4 | FOURTH FLOOR ELEVATOR PLAN
1/4" = 1'-0"



9 | ELEVATOR PIT LADDER PLAN
1" = 1'-0"



6 | ELEVATOR DOOR AT CONCRETE
1" = 1'-0"

Prepared For:
Westbrook Development
Corp. & Millbrook Estates
LLP
Address
City, State

Consultant:
ARCHETYPE
architects
48 Union Wharf Portland, Maine 04101
(207) 772-6022 ARCHETYPE@ARCHETYPEPA.COM

Architect:
MILLBROOK ESTATES
300 East Bridge Street
Westbrook, ME 04092

Revisions:
Date: 10 AUG 2015
Scale: As indicated
ELEVATOR DETAILS

A3.11