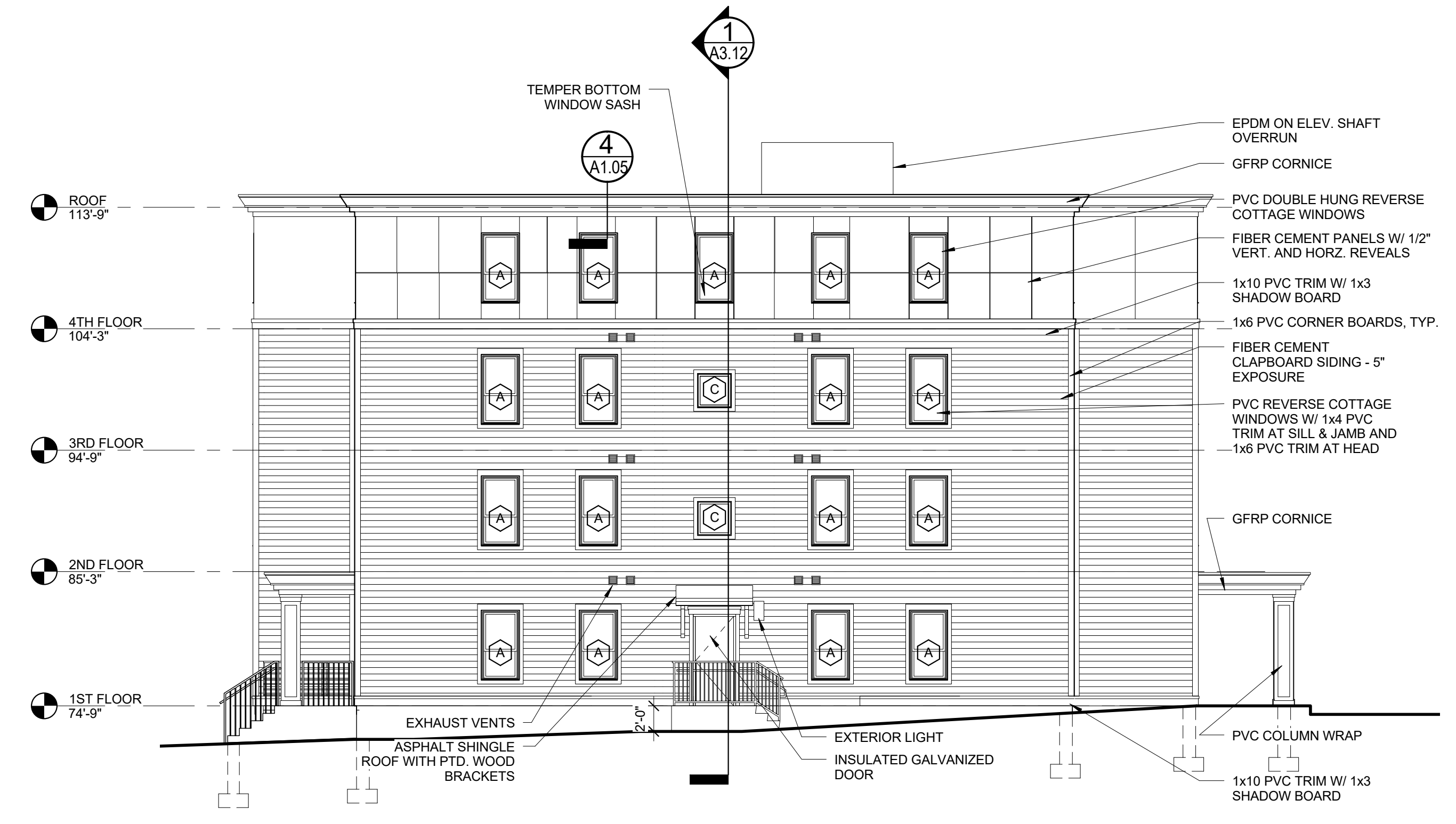




1 | SOUTH BUILDING ELEVATION
1/8" = 1'-0"



2 | WEST BUILDING ELEVATION
1/8" = 1'-0"

Prepared For:
Westbrook Development
Corp. & Millbrook Estates
LLP

Consultant:

ARCHETYPE
architects
48 Union Wharf Portland, Maine 04101
(207) 772-6022 ARCHETYPE@ARCHETYPEPA.COM

Architect:

MILLBROOK ESTATES

300 East Bridge Street
Westbrook, ME 04092

Project:

Revisions:

Date: 10 AUG 2015
Scale: 1/8" = 1'-0"

BUILDING ELEVATIONS

10 AUG 2015

A2.01