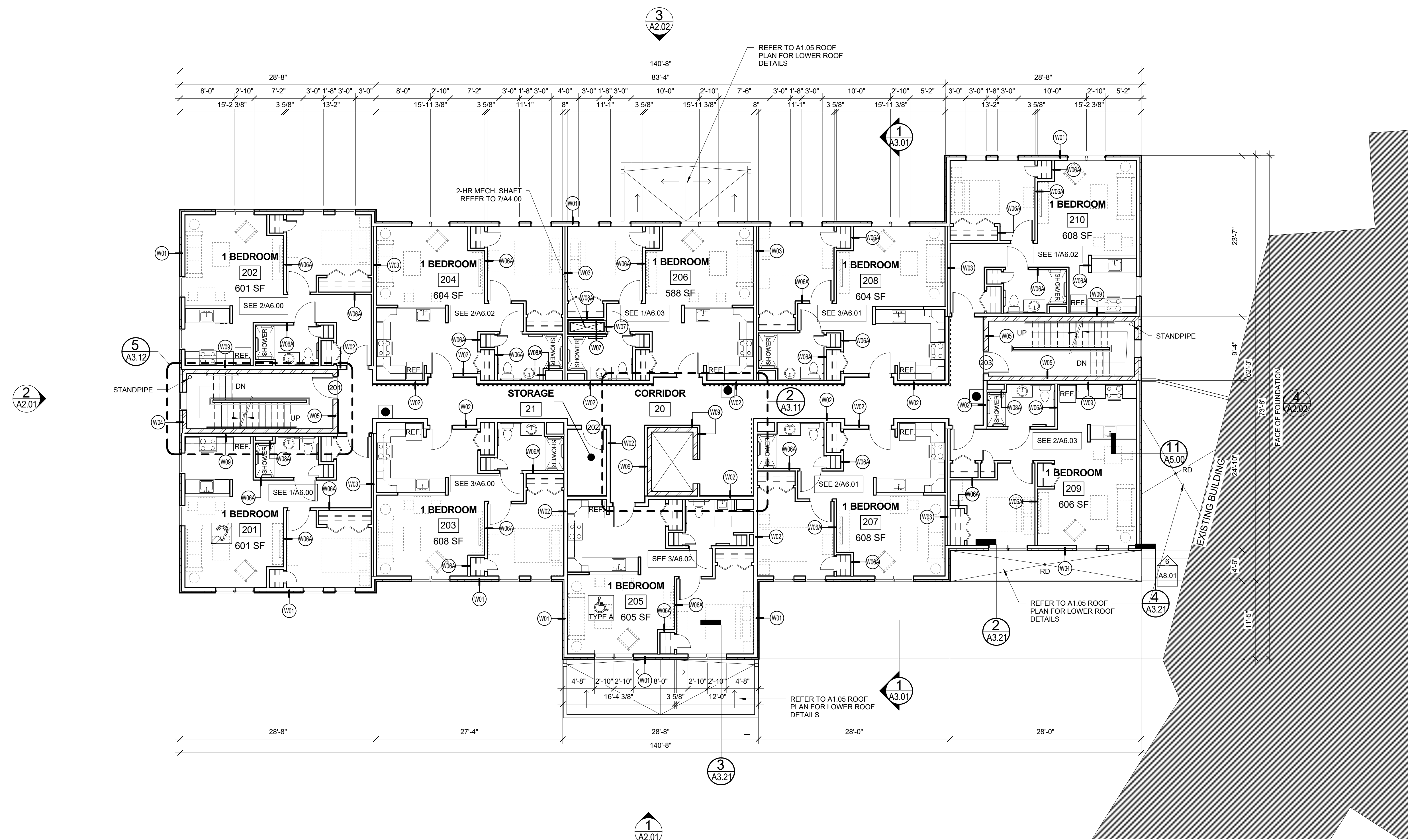


LEGEND:

| | |
|------------------|--|
| BUILDING SECTION | |
| WALL SECTION | |
| SECTION DETAIL | |
| PLAN DETAIL | |
| WALL TYPE | |
| FLOOR TYPE | |

| | |
|---|--|
| NEW WALL - STUD & GYP. BD. | |
| NEW CMU WALL | |
| SEMI RECESSED FIRE EXTINGUISHER CABINET | |
| INTERNATIONAL SYMBOL OF ACCESSIBILITY | |
| INTERNATIONAL SYMBOL OF ACCESS FOR HEARING LOSS | |
| NEW DOOR | |
| NEW FLOOR ON NEW FRAMING- SEE STRUCTURAL | |
| NEW CONCRETE FLOOR | |



1 SECOND FLOOR PLAN
1/8" = 1'-0"

Prepared For:
Westbrook Development Corp. & Millbrook Estates LLP
Address
City, State

Consultant:
ARCHETYPE architects
48 Union Wharf Portland, Maine 04101
(207) 772-6022 ARCHETYPE@ARCHETYPEA.COM

Project:
MILLBROOK ESTATES
300 East Bridge Street
Westbrook, ME 04092

Date: 10 AUG 2015
Scale: As indicated
SECOND FLOOR PLAN

A1.02