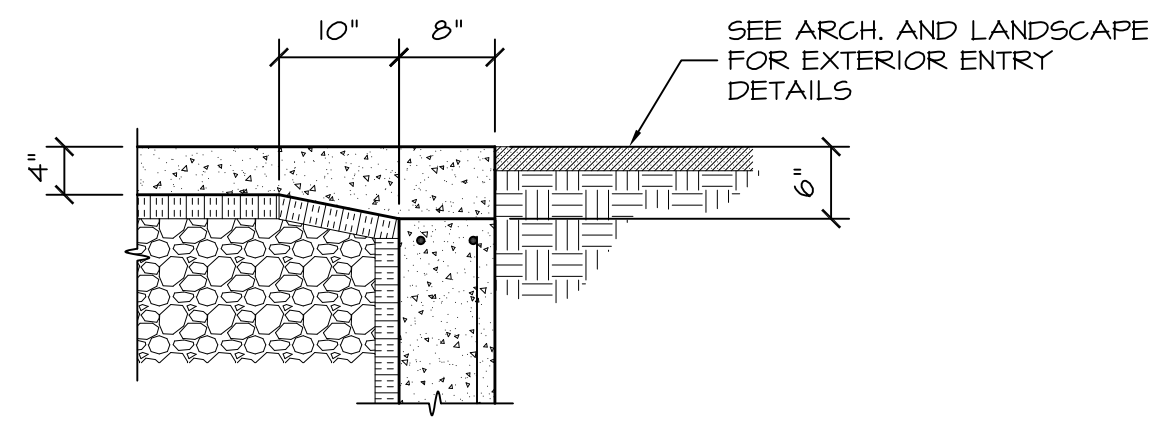
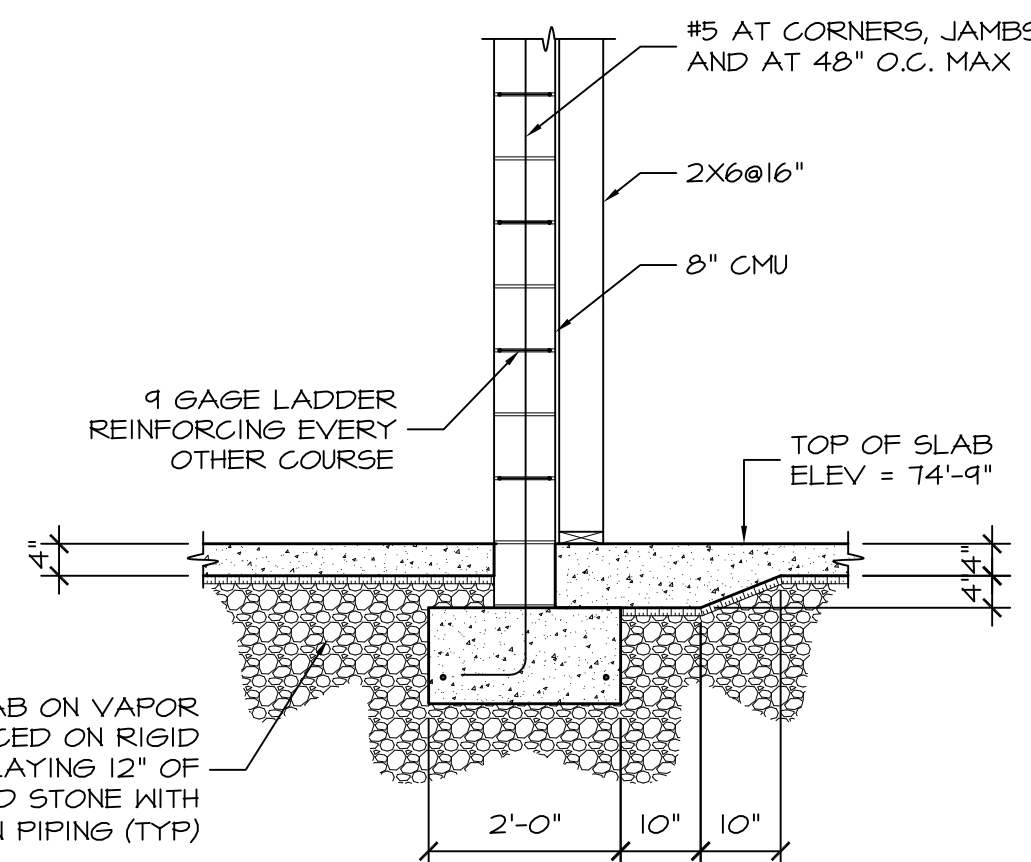


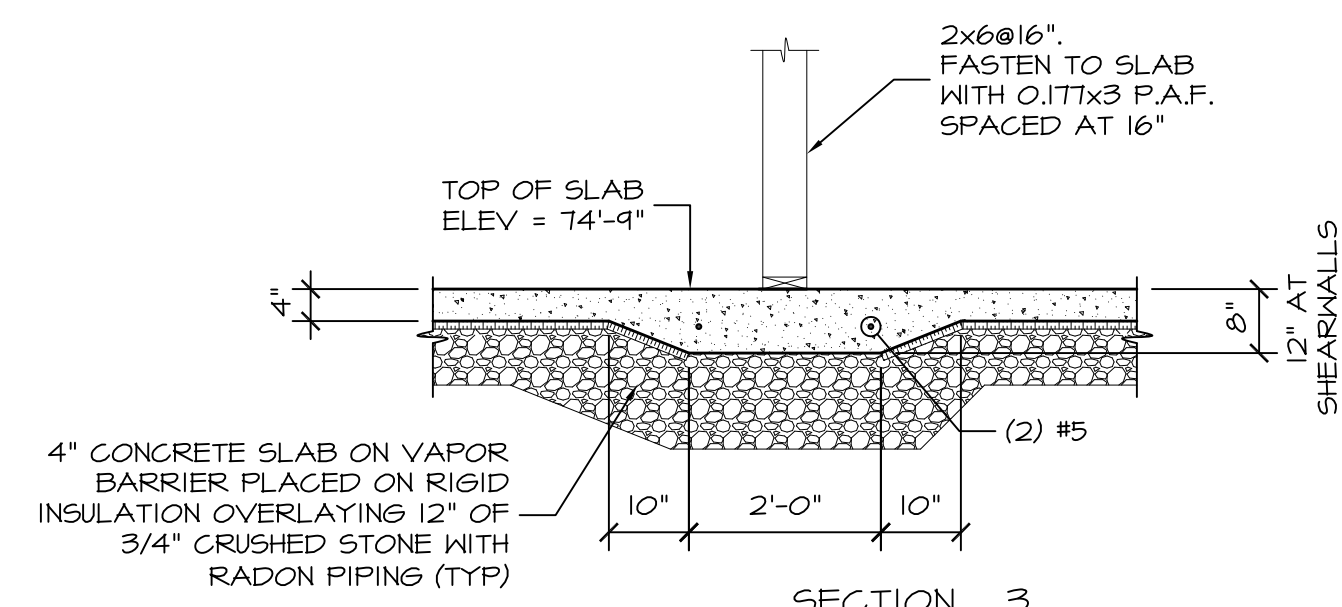
SLAB EDGE DETAIL  
1/2"=1'-0"



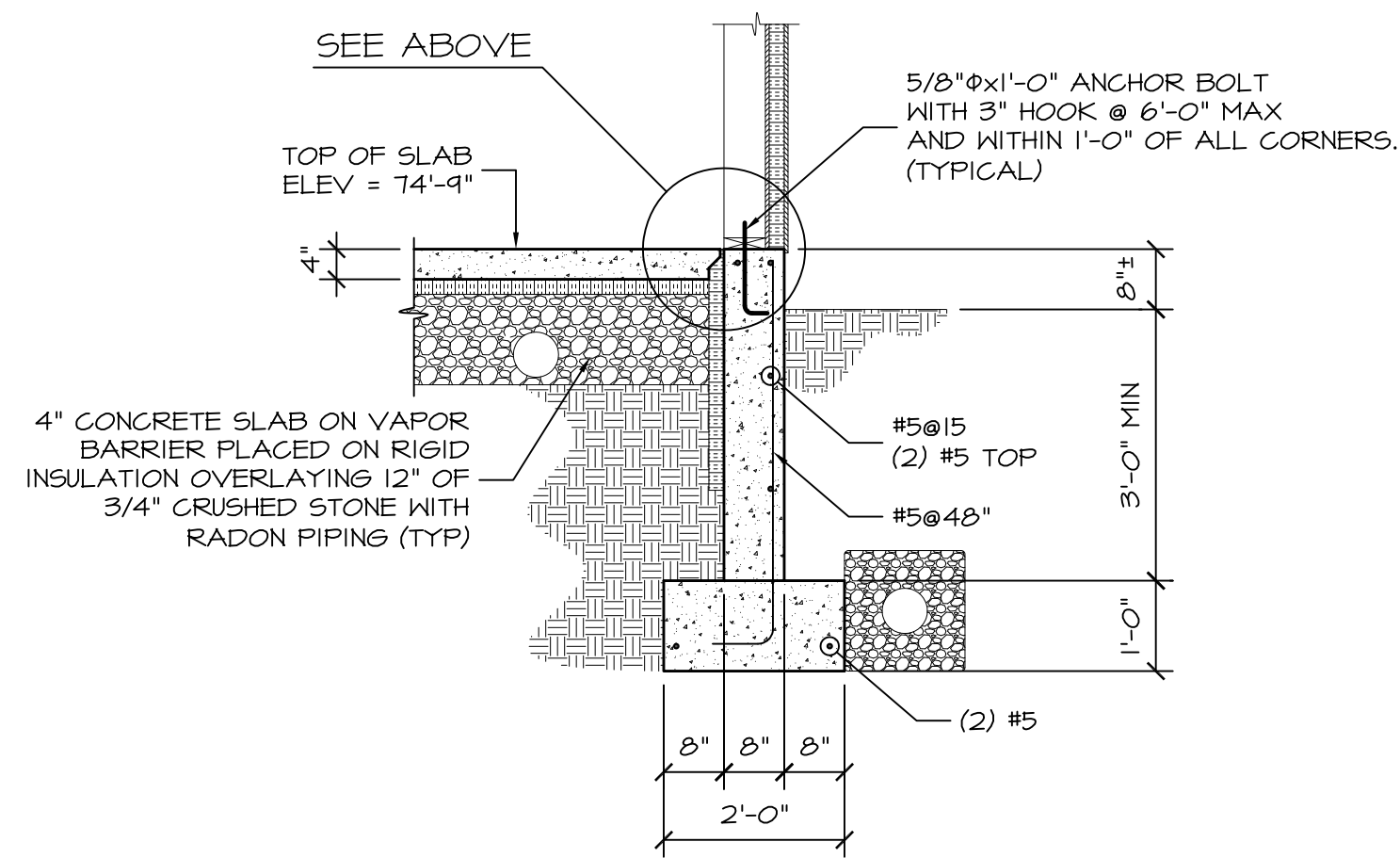
TOP OF WALL AT DOORS  
3/4"=1'-0"



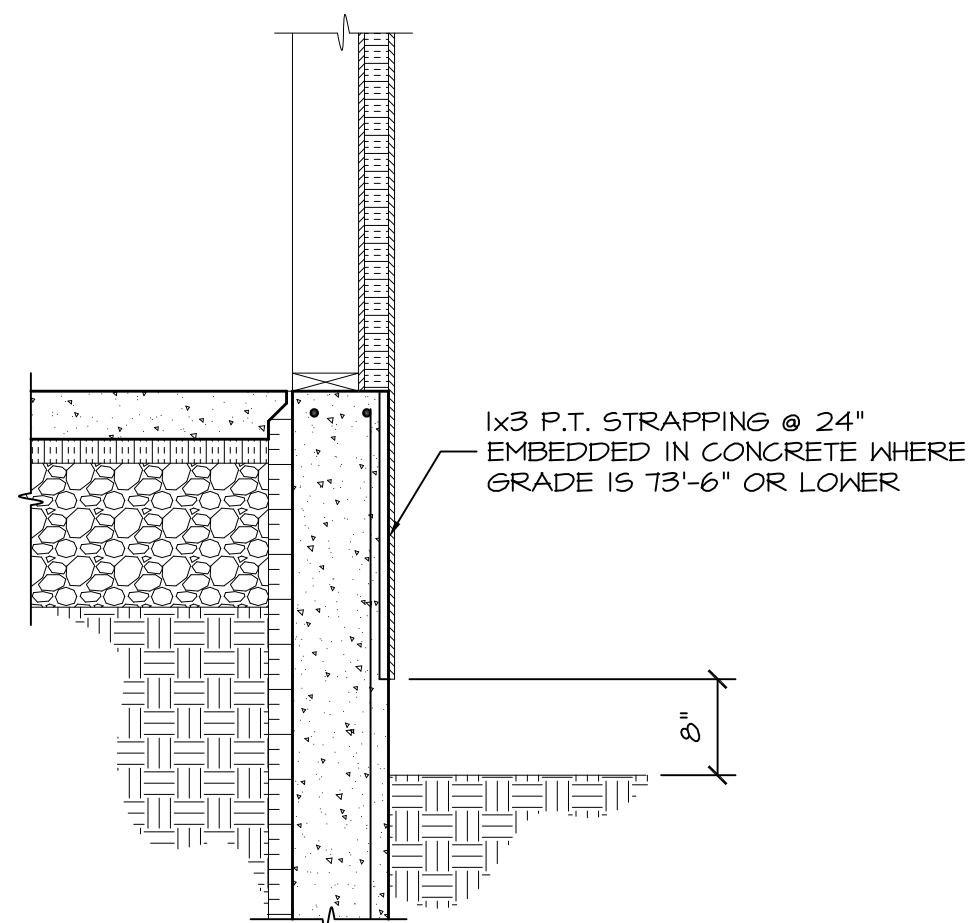
SECTION 2  
1/2"=1'-0" S1.01



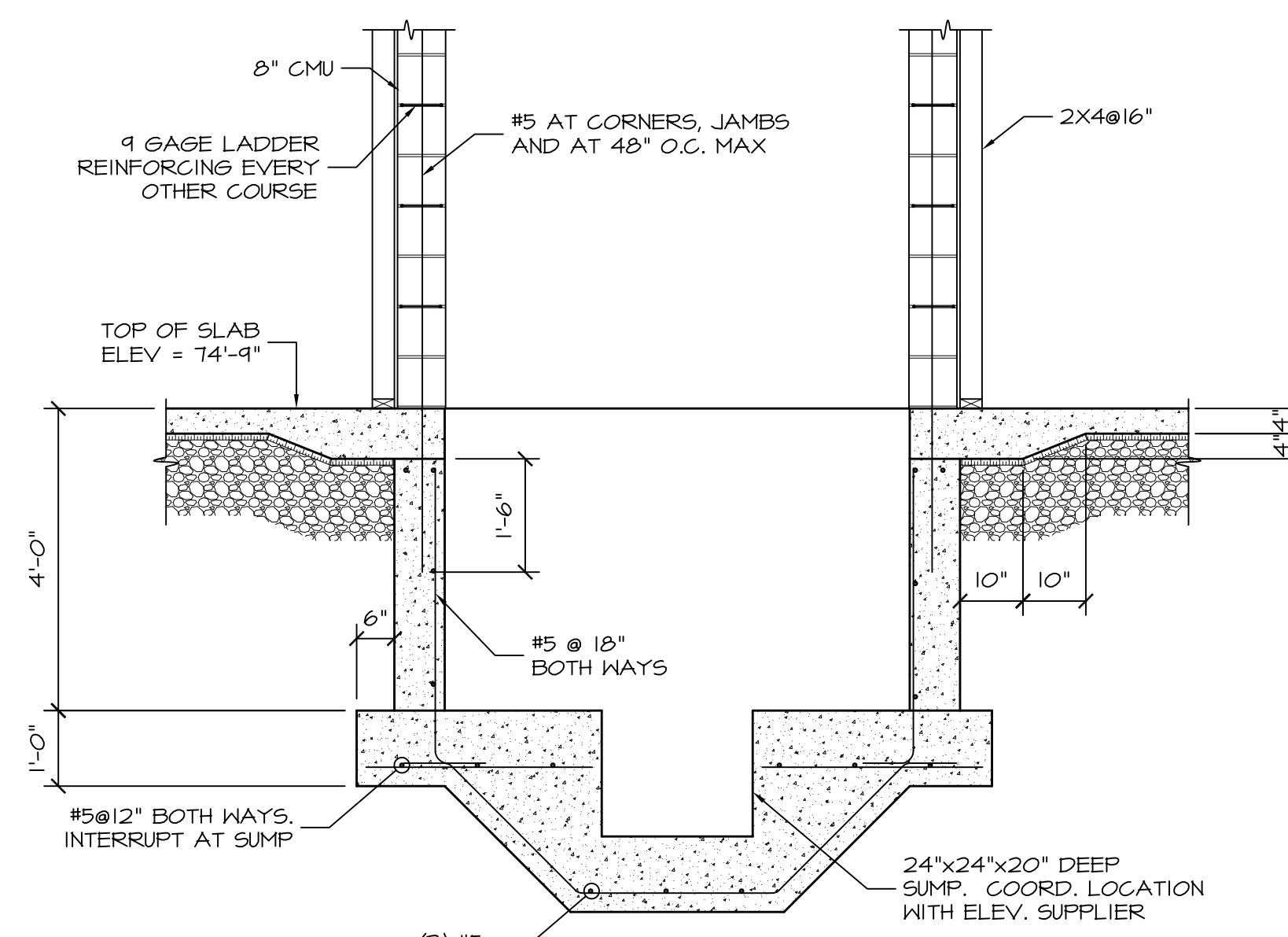
SECTION 3  
1/2"=1'-0" S1.01



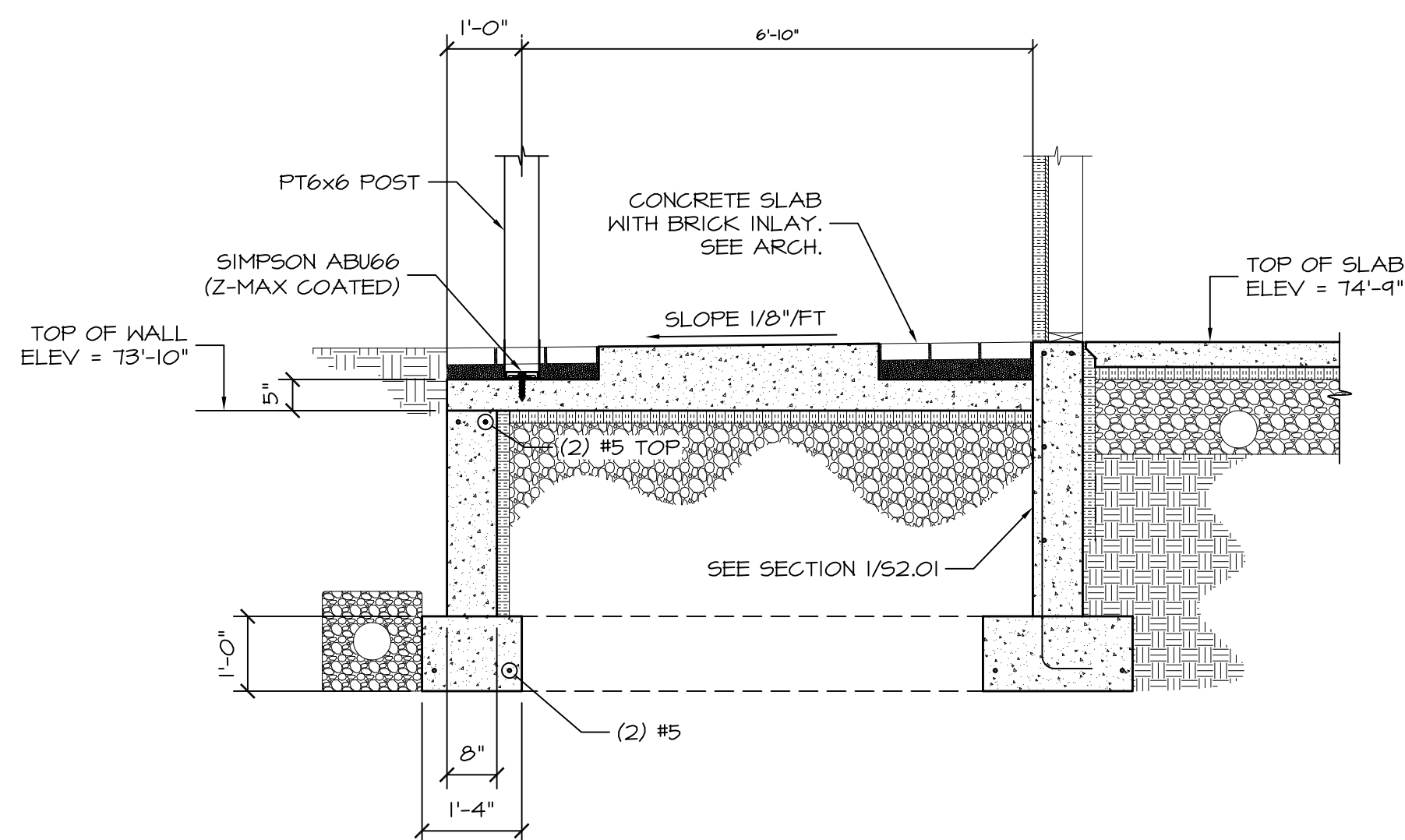
SECTION 1  
1/2"=1'-0" S1.01



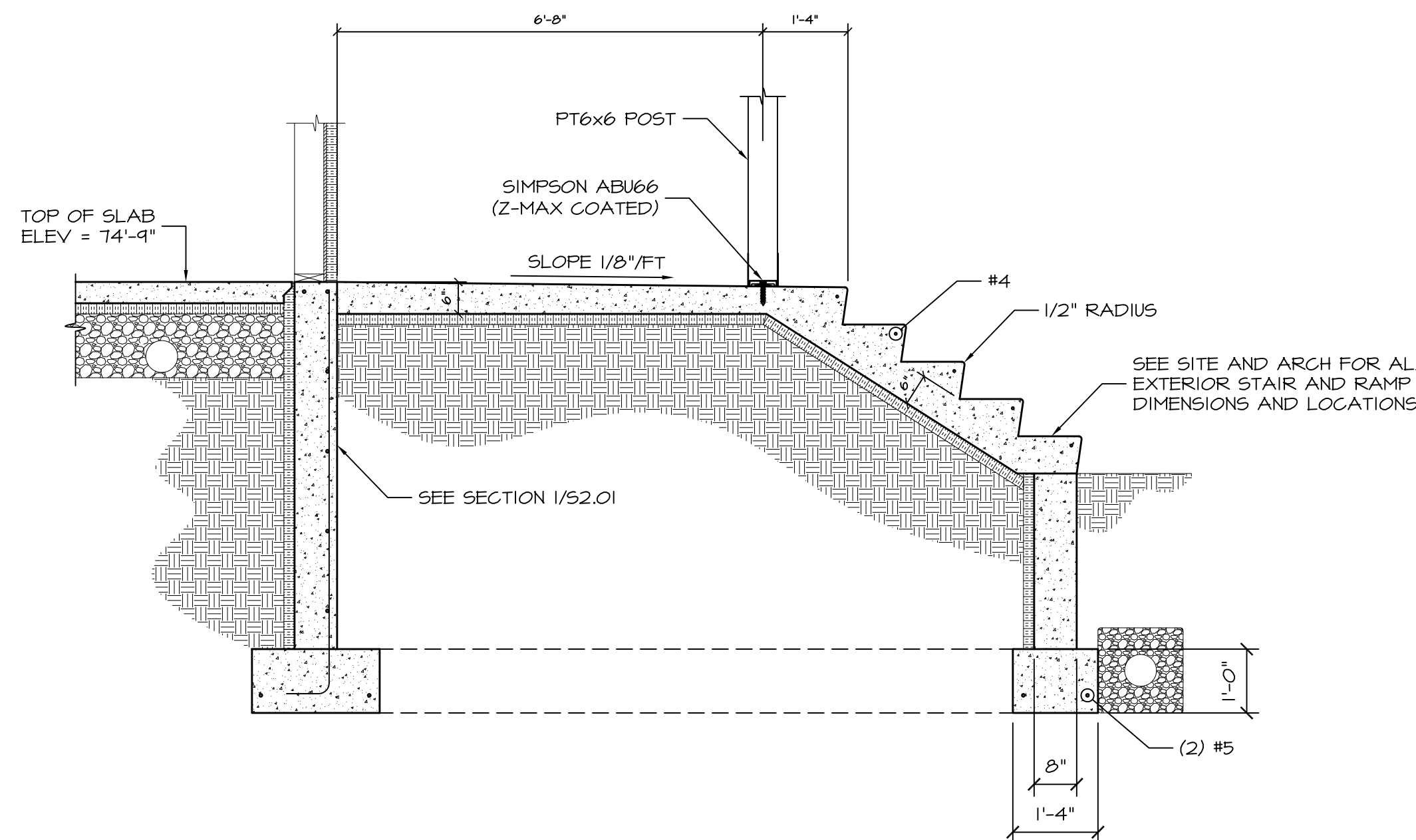
TOP OF WALL AT LOW GRADE  
3/4"=1'-0"



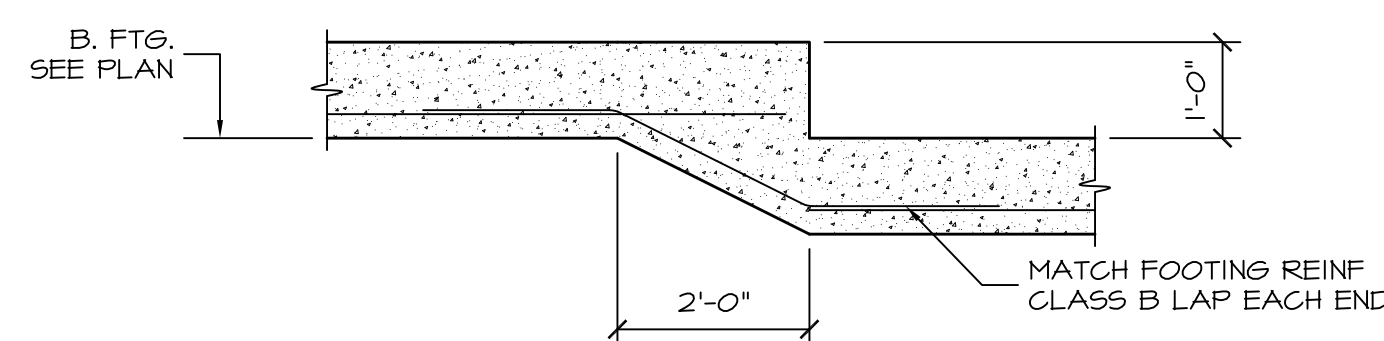
SECTION 4  
1/2"=1'-0" S1.01  
COORDINATE ALL ELEVATOR PIT DIMENSIONS WITH ELEVATOR SUPPLIER.



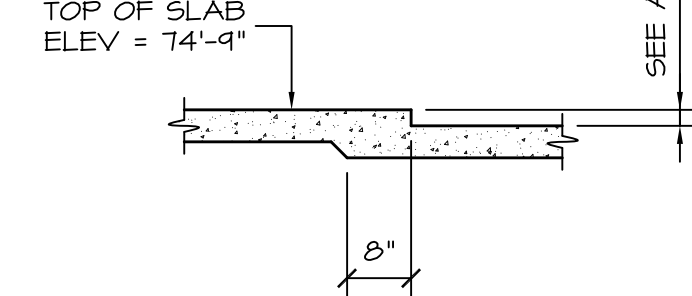
SECTION 5  
1/2"=1'-0" S1.01



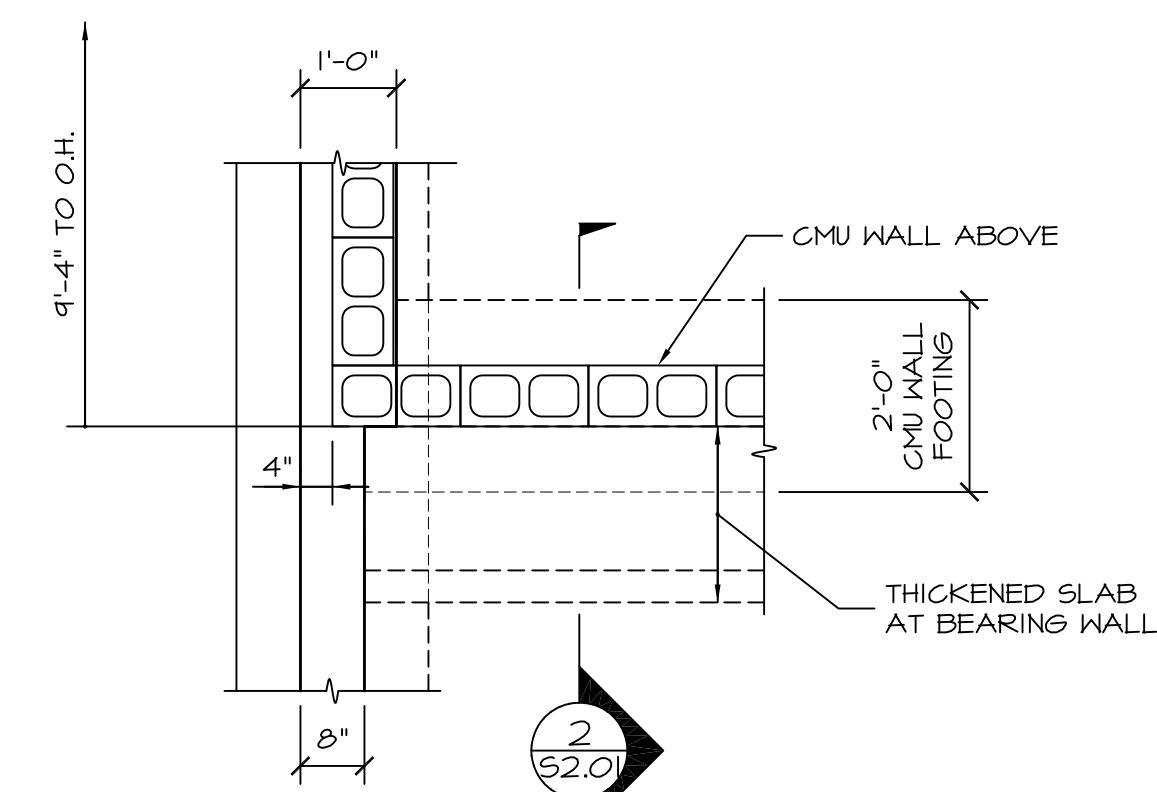
SECTION 6  
1/2"=1'-0" S1.01



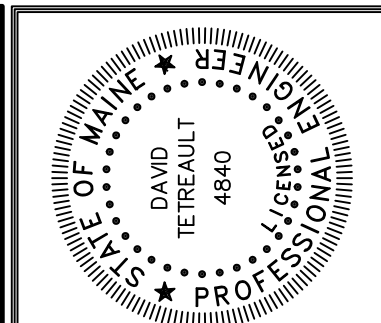
TYPICAL STEPPED FOOTING DETAIL  
1/2"=1'-0"



TYPICAL RECESSED SLAB DETAIL  
1/2"=1'-0"



DETAIL A  
1/2"=1'-0" S1.01



Prepared For:  
WESTBROOK DEVELOPMENT CORPORATION  
MILLBROOK ESTATES II, LP  
30 Liza Harmon Drive  
Westbrook, Maine 04092

Consulting Engineer:  
STRUCTURAL DESIGN CONSULTING  
2696 Lake Shore Road  
Unit 300  
Glenburn, VT 05249  
Tel 603.293.8038

Architect:  
ARCHITECTYPE architects  
48 Union Wharf Portland, Maine 04101  
(207) 772-6022 Fax (207) 772-4056

Project:  
MILLBROOK ESTATES SENIOR HOUSING  
300 East Bridge Street  
Westbrook, Maine

Revisions:	09/01/15
90% MSHA Submission	01/04/16
Issued for Bid	

Date: 04 Jan 2016  
Scale: 1/8"=1'-0"  
Date: 04 Jan 2016

FOUNDATION SECTIONS  
S2.01