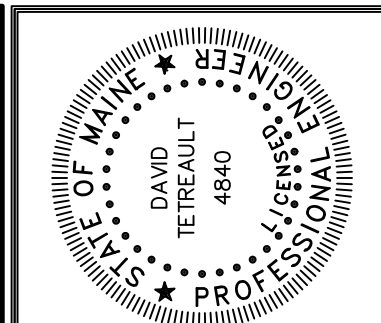
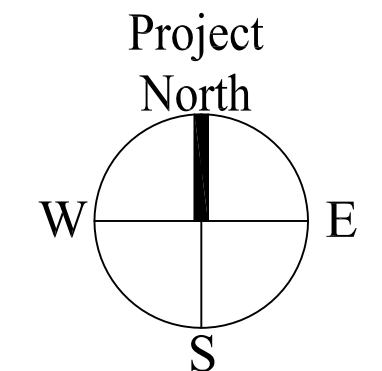


SECOND FLOOR FRAMING PLAN

1/8"=1'-0"
 ALL FLOOR FRAMING MEMBERS ARE 16" DEEP PARALLEL CHORD TRUSSES SPACED AT 24" UNLESS NOTED OTHERWISE.
 FLOOR TRUSS LOADING CRITERIA:
 TOP CHORD
 DEAD LOAD 10 PSF
 LIVE LOAD 40 PSF
 BOTTOM CHORD
 DEAD LOAD 10 PSF
 SEE SECTIONS 3/52.02 AND 4/52.04 FOR ADDITIONAL LOADING CRITERIA

FLOOR SHEATHING IS 3/4" ADVANTECH.
 ROOF SHEATHING IS 5/8" ADVANTECH.
 TOP OF SHEATHING ELEVATION = 85'-3"
 TOP OF SHEATHING AT NORTH ENTRANCE ROOF = 86'-2"
 TOP OF SHEATHING AT SOUTH ENTRANCE ROOF = 85'-4"
 TOP OF SHEATHING AT CONNECTOR ROOF = 85'-4"

BEARING WALLS ARE 2x6@16".
 BEARING WALL HEADERS ARE (3)2x8 WITH 2 JACK STUDS AT WINDOWS AND SINGLE DOORS UNLESS NOTED.
 LOOSE LINTEL AT CMU WINDOWS AND DOORS IS (2) L 4x3 1/2x5/16 LLV
 // INDICATES SHEARWALL. SEE 52.03.
 SEE S0.01 FOR FRAMING HARDWARE SCHEDULE.



Prepared For:
WESTBROOK DEVELOPMENT CORPORATION
 MILLBROOK ESTATES II, LP
 30 Liza Harmon Drive
 Westbrook, Maine 04092

Consulting Engineer:
STRUCTURAL DESIGN CONSULTING
 2696 Lake Shore Road
 Unit 130
 Glenburn, ME 04049
 Tel 603.293.8038

Architect:
ARCHETYPE architects
 48 Union Wharf Portland, Maine 04101
 (207) 772-6022 Fax (207) 772-4056

Project:
MILLBROOK ESTATES SENIOR HOUSING
 300 East Bridge Street
 Westbrook, Maine

Revisions:	09/01/15
90% MSHA Submission	01/04/16
Issued for Bid	

Date: 04 JAN 2016
 Scale: 1/8"=1'-0"
SECOND FLOOR FRAMING PLAN

S1.02