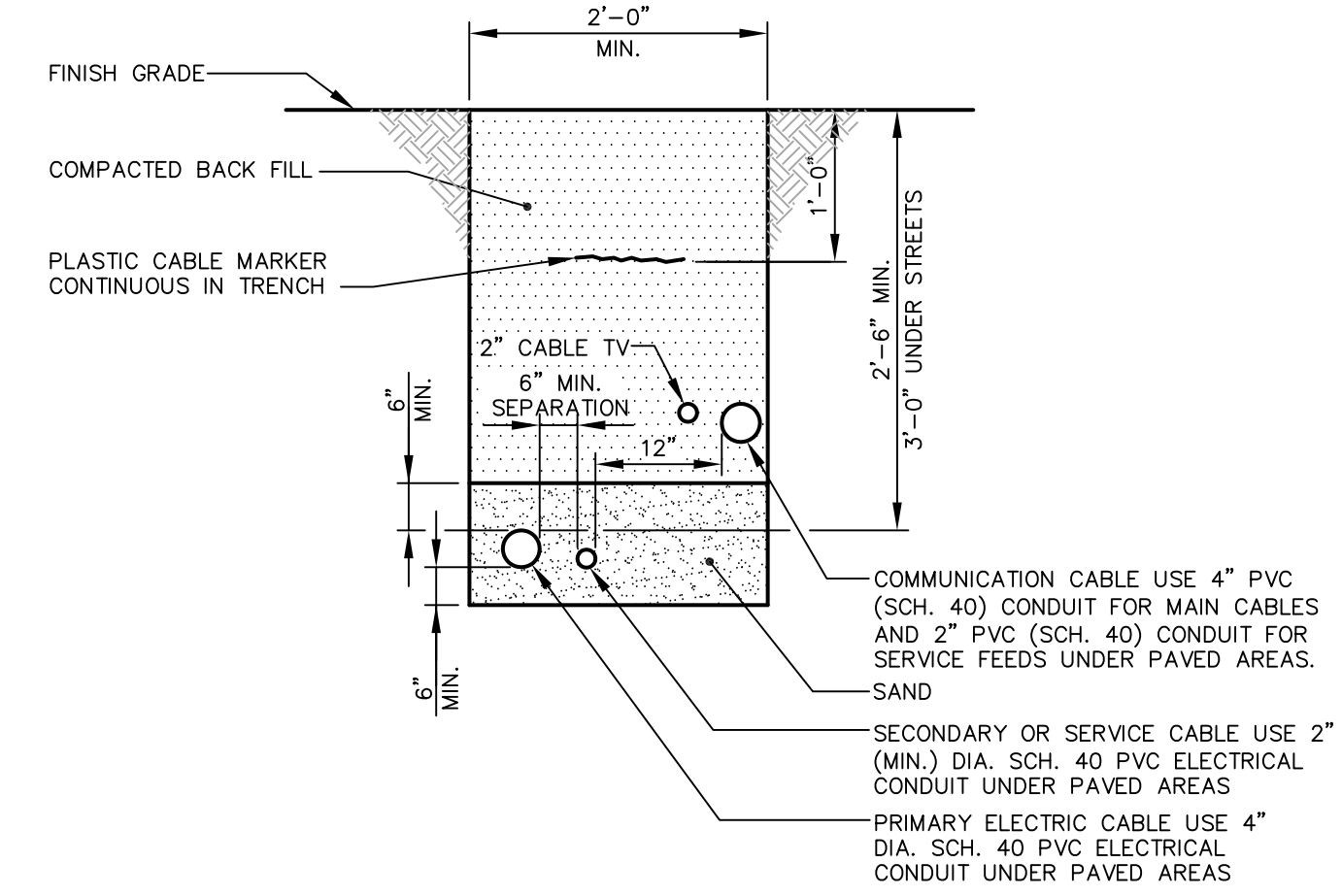
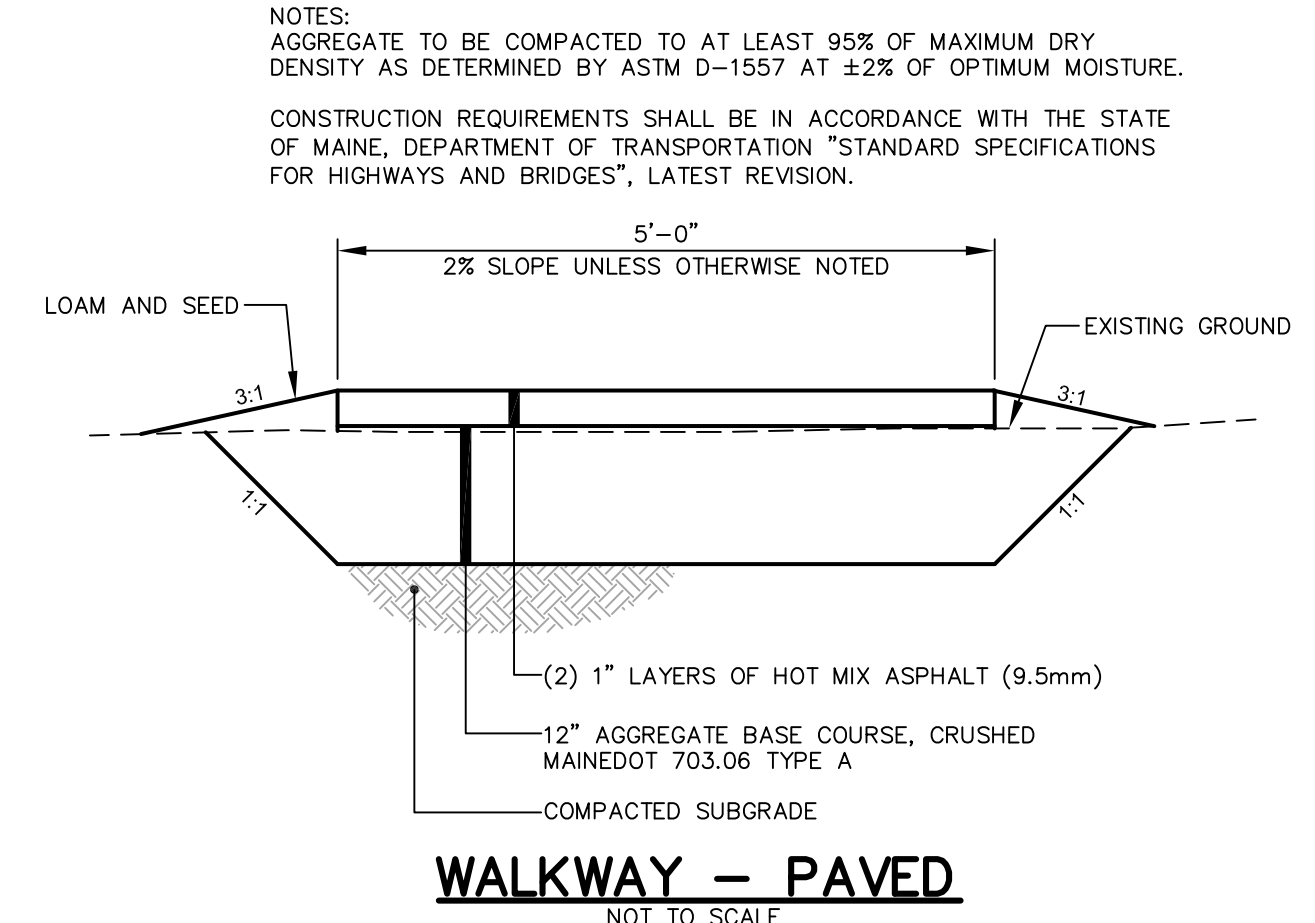


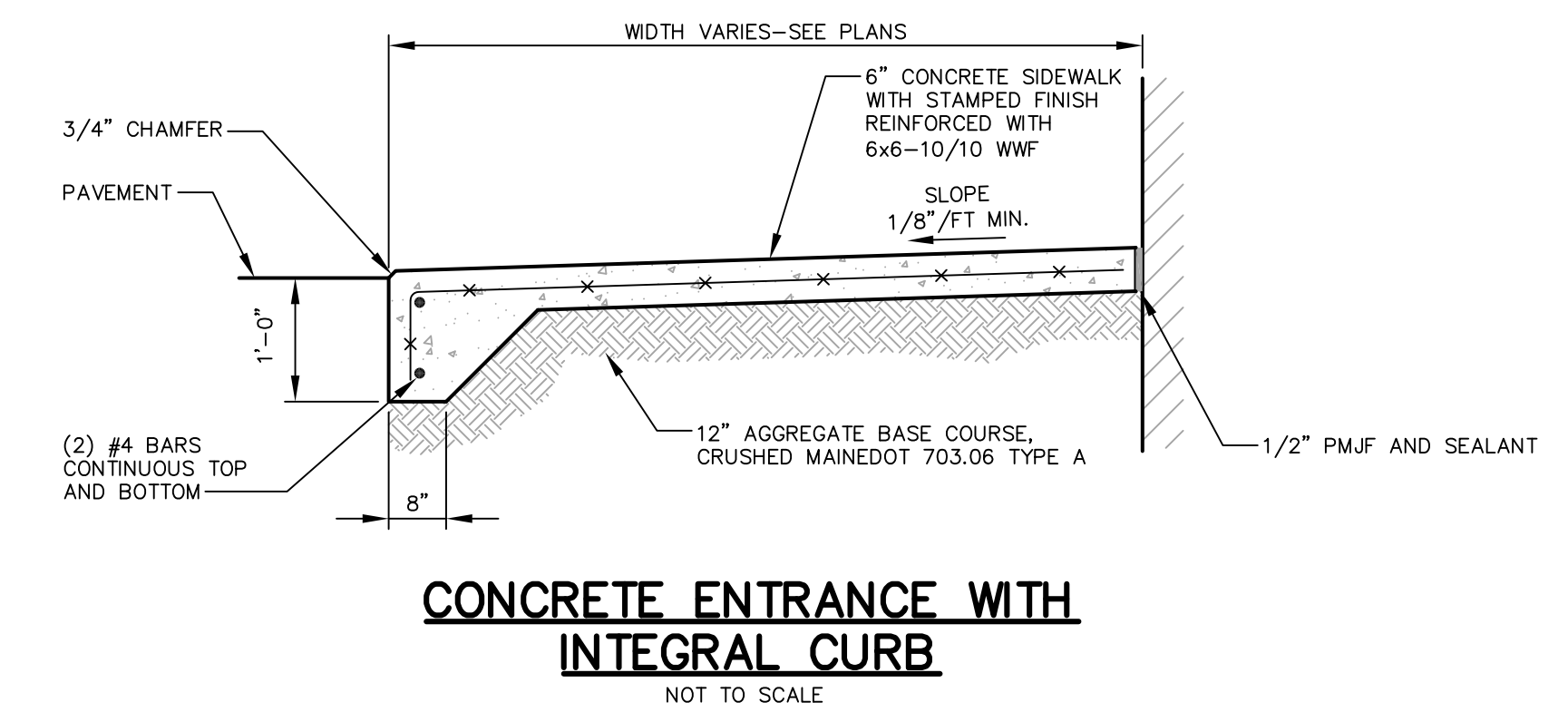
TYPICAL TRENCH SECTION
NOT TO SCALE



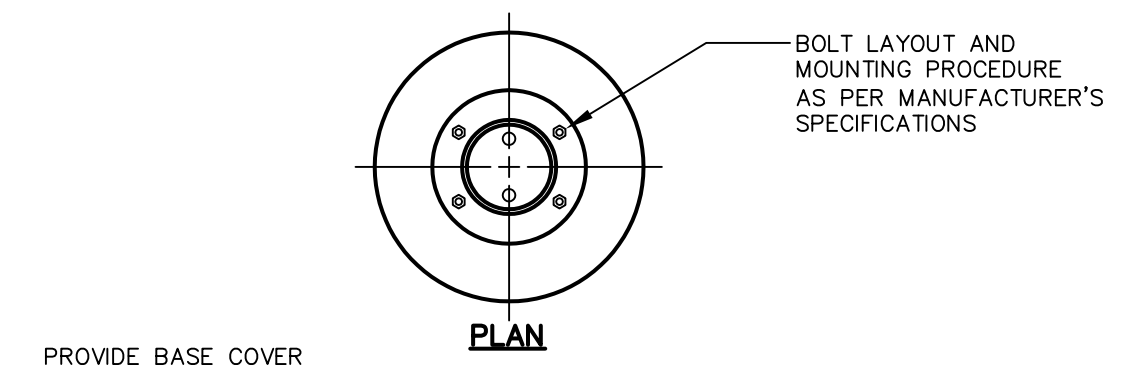
UNDERGROUND ELECTRICAL & TELEPHONE CONDUIT
NOT TO SCALE



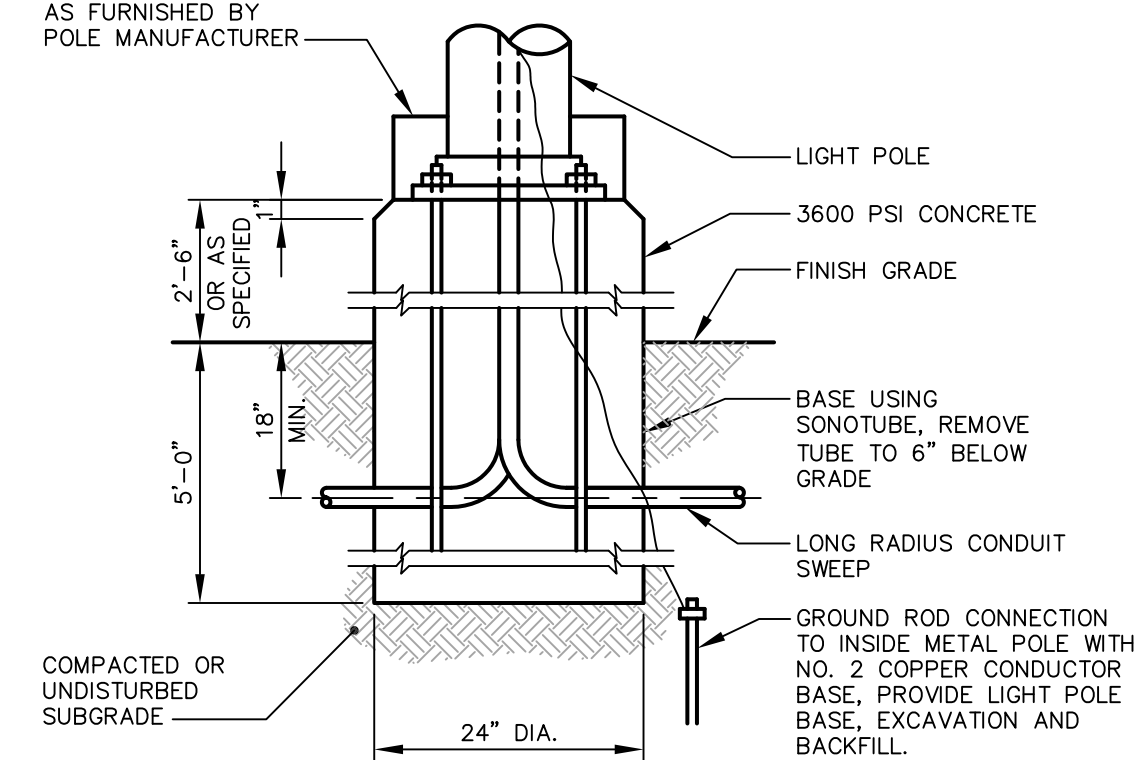
WALKWAY - PAVED
NOT TO SCALE



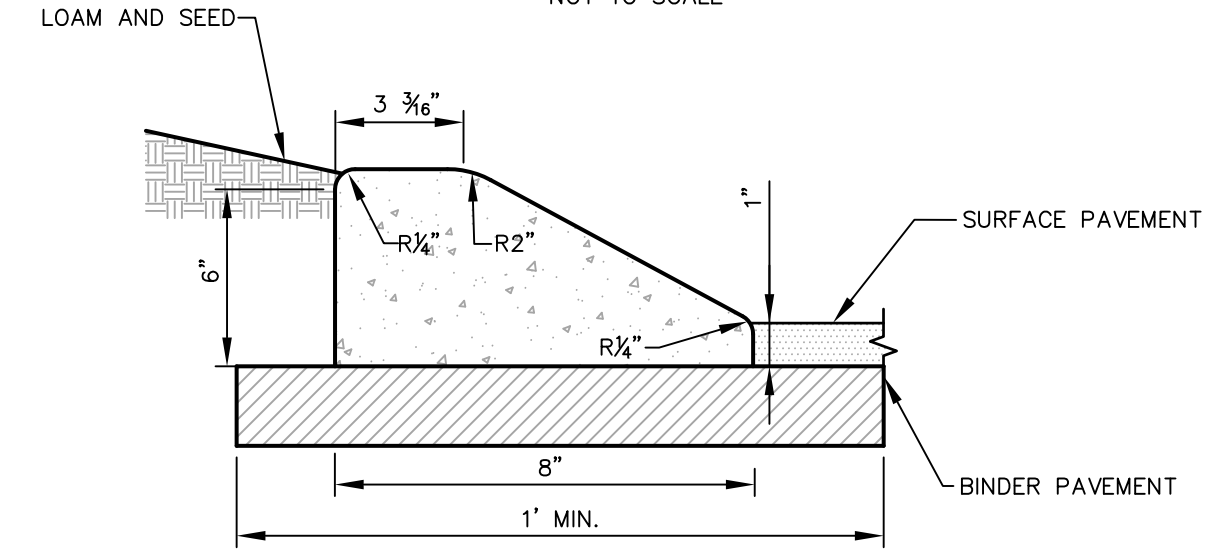
CONCRETE ENTRANCE WITH INTEGRAL CURB
NOT TO SCALE



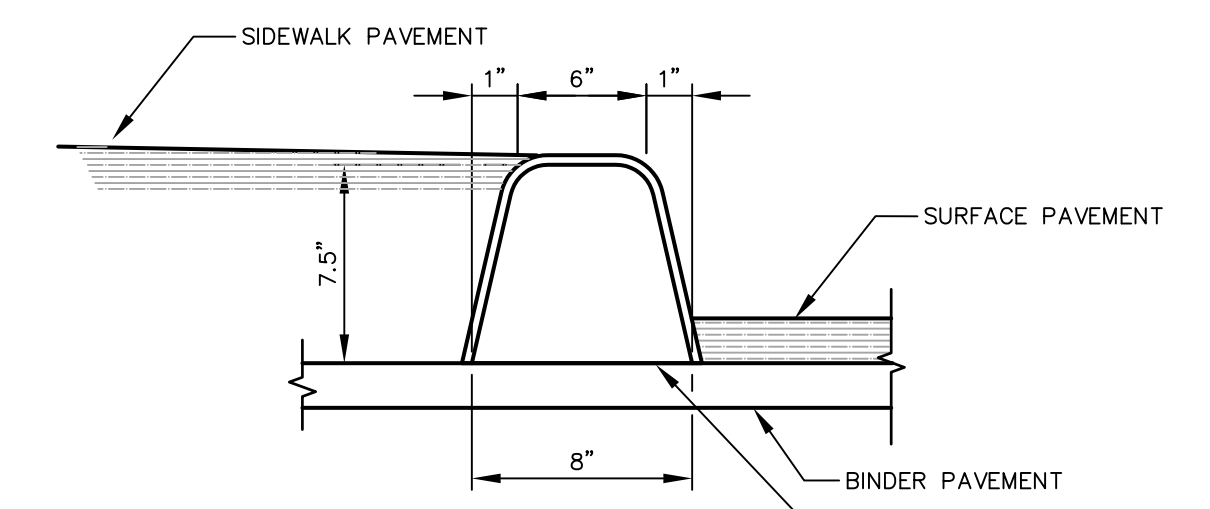
PLAN



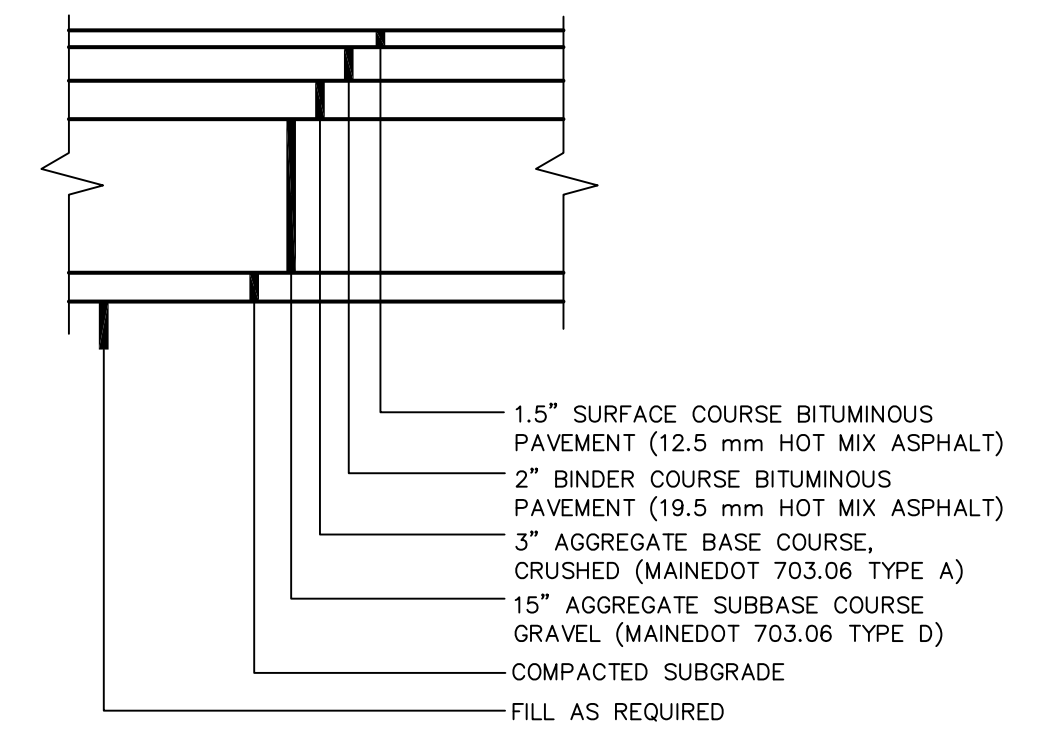
SECTION LIGHT POLE BASE
NOT TO SCALE



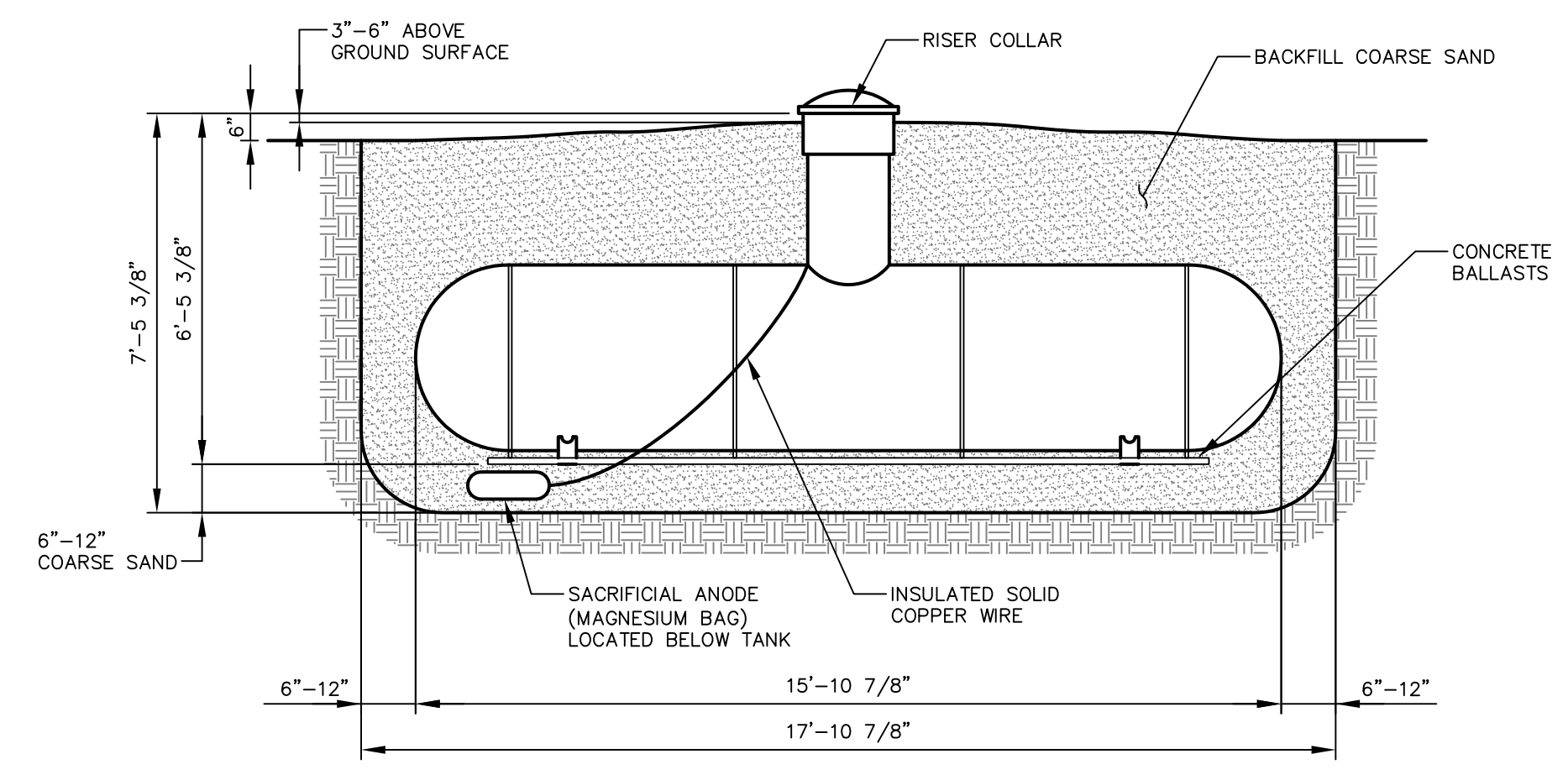
SLOPED SLIPFORM CONCRETE CURB
NOT TO SCALE



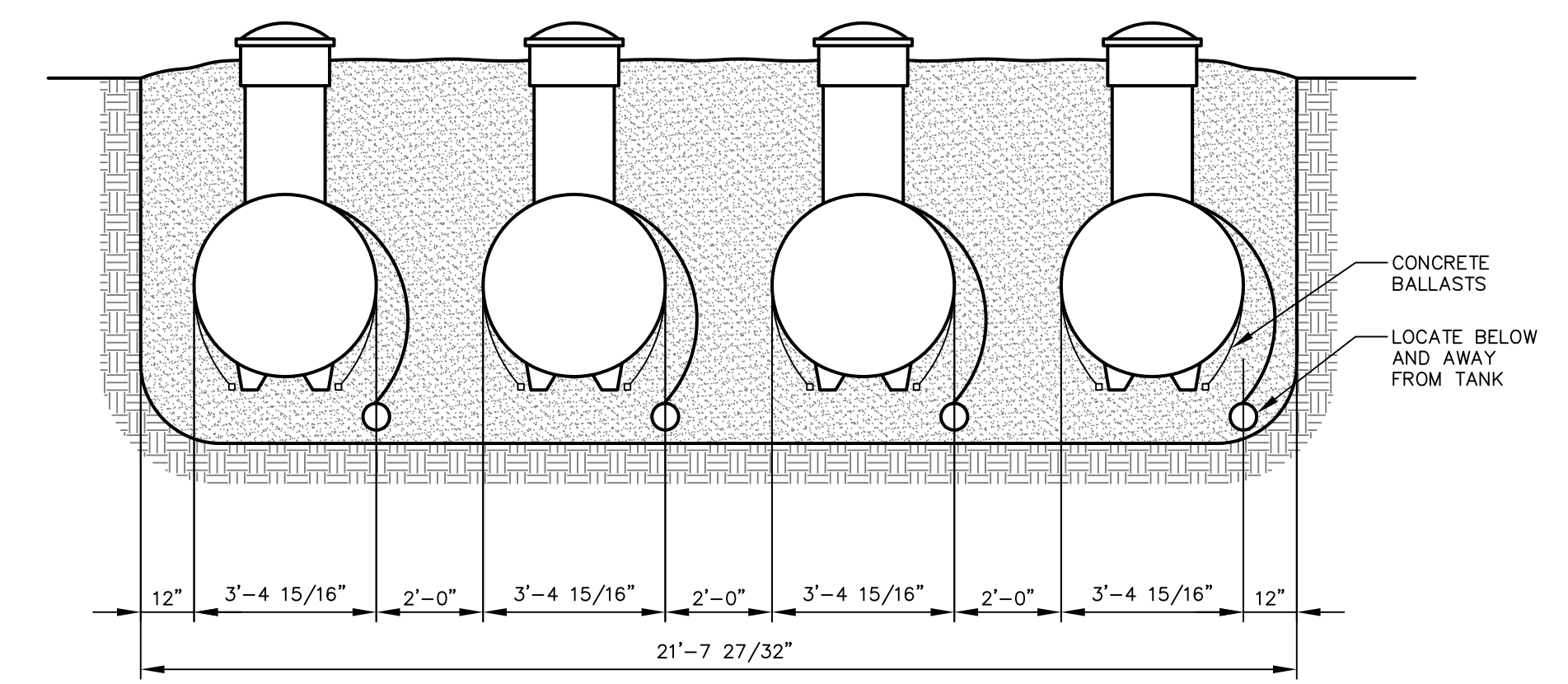
VERTICAL SLIPFORM CONCRETE CURB
NOT TO SCALE



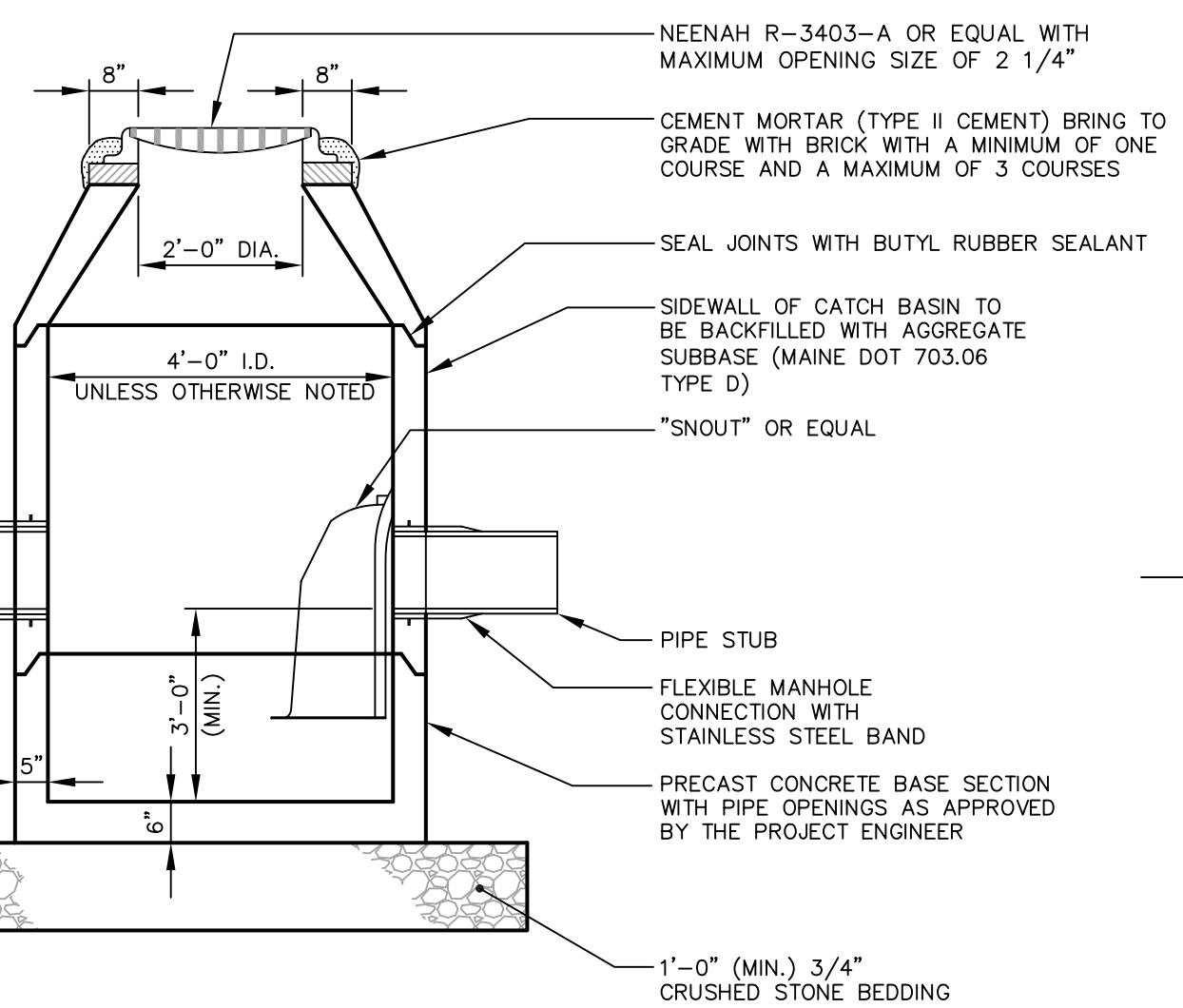
PARKING AREA PAVEMENT BUILDUP
NOT TO SCALE



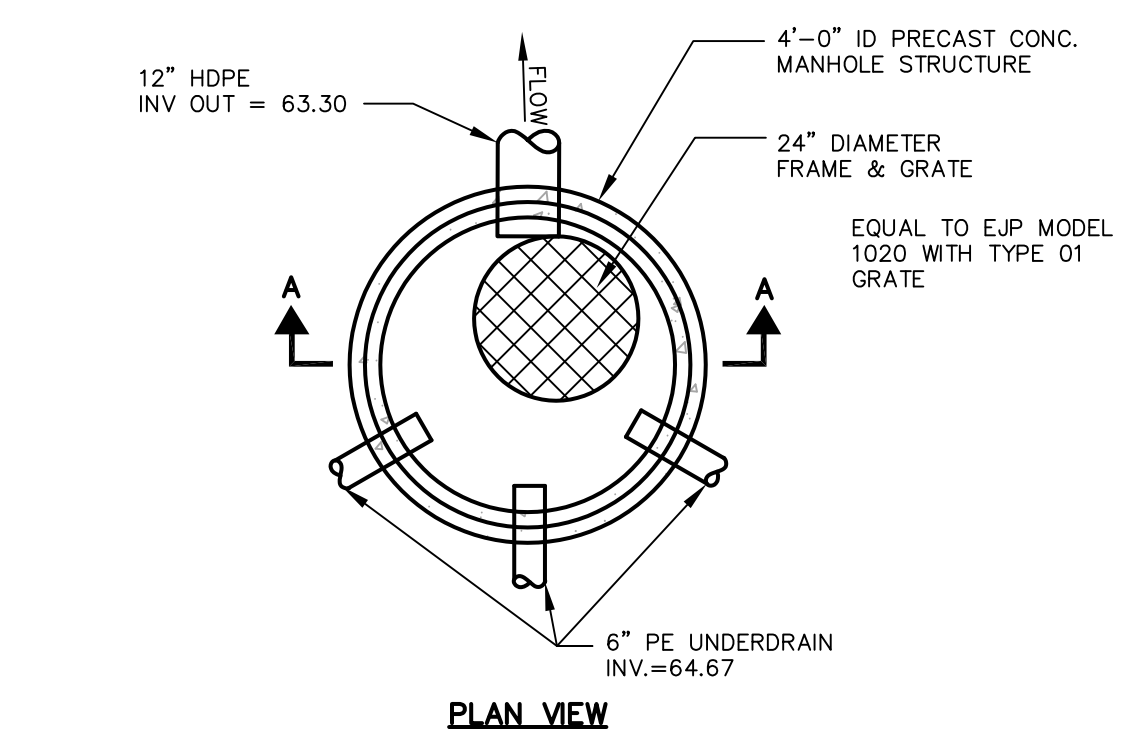
UNDERGROUND PROPANE TANK
NOT TO SCALE



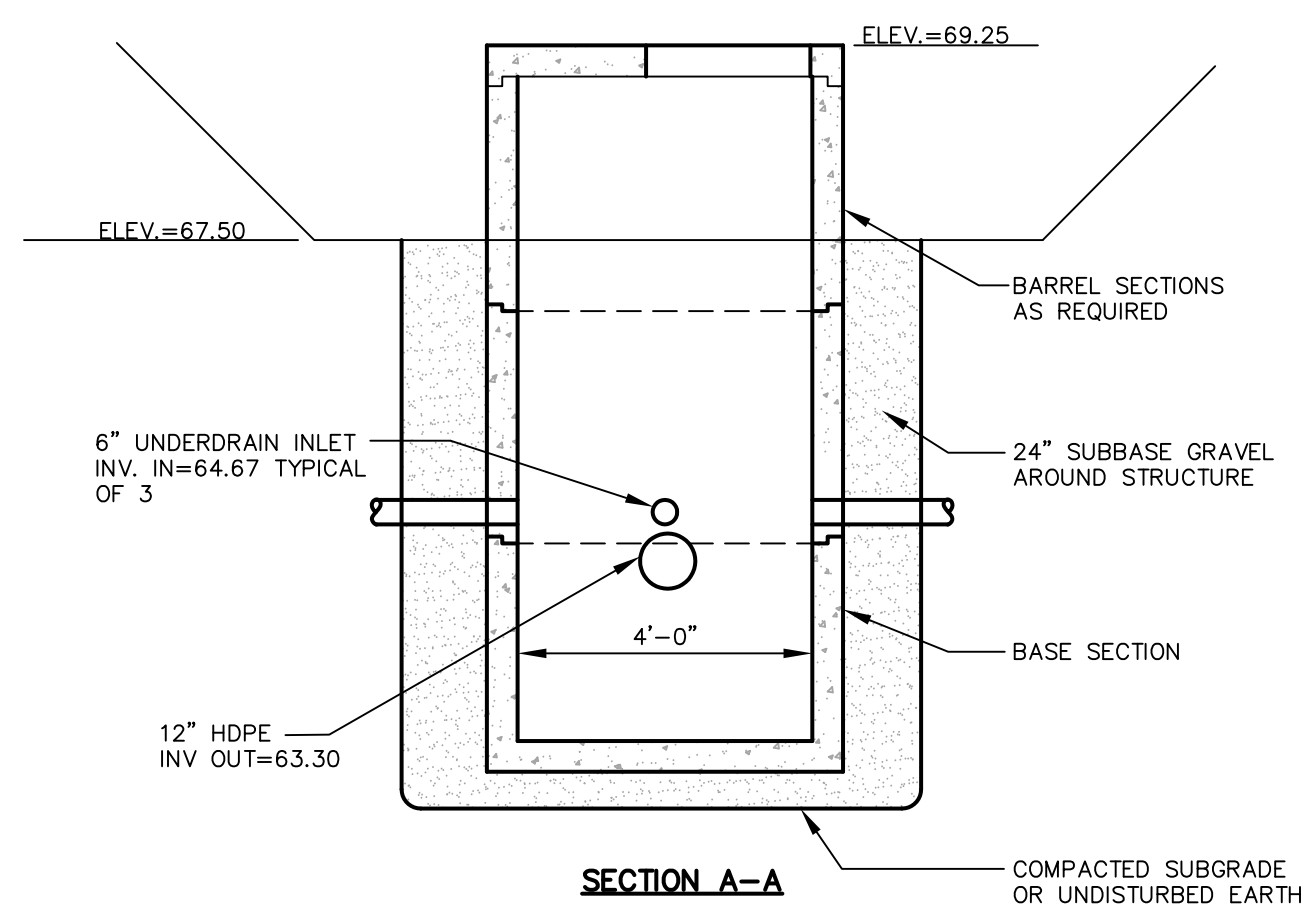
UNDERGROUND PROPANE TANK
NOT TO SCALE



CATCH BASIN - CONCENTRIC CONE
NOT TO SCALE



PLAN VIEW



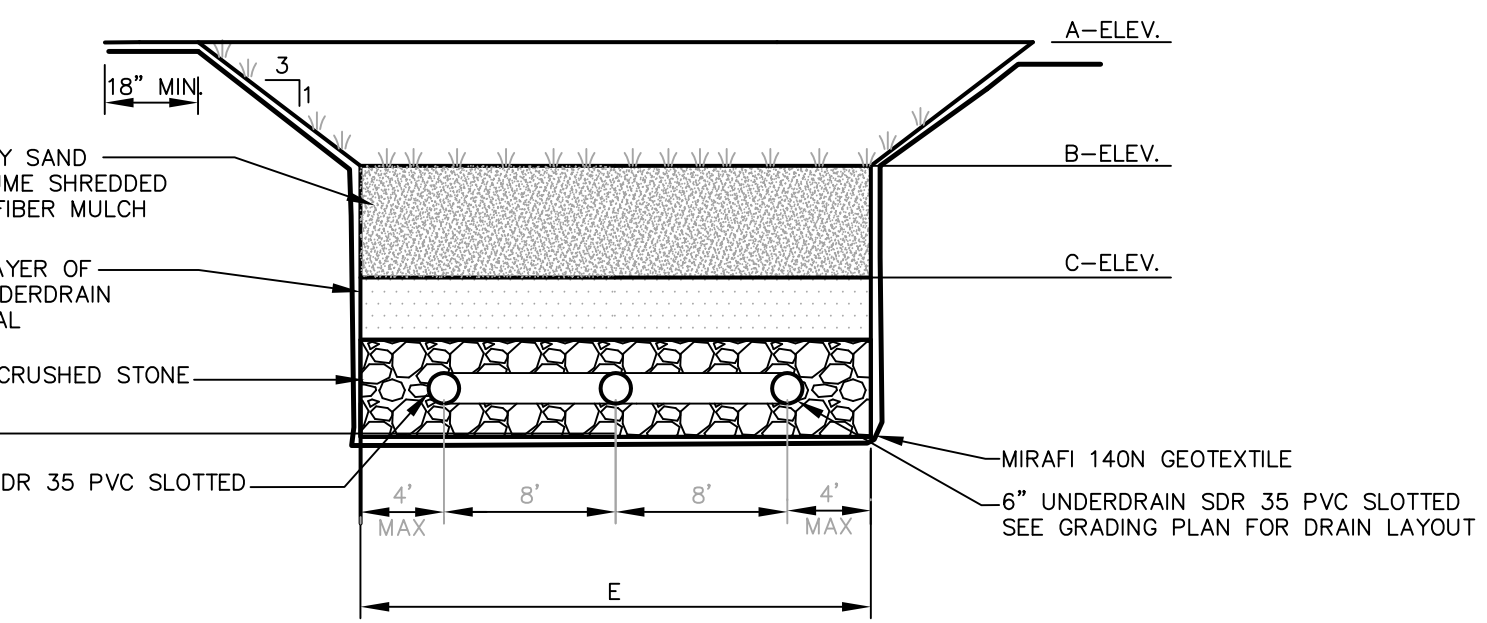
SECTION A-A

OUTLET CONTROL STRUCTURE
NOT TO SCALE

NOTE: CONSTRUCTION REQUIREMENTS SHALL BE IN ACCORDANCE WITH SPECIAL PROVISIONS SECTION 401 AND 403, AS PER THE STATE OF MAINE, DEPARTMENT OF TRANSPORTATION "STANDARD SPECIFICATIONS FOR HIGHWAYS AND BRIDGES", LATEST REVISION.

PARKING AREA PAVEMENT BUILDUP
NOT TO SCALE

ELEVATION TABLE				
A	B	C	D	E
VARIES	67.5	66.0	64.33	VARIES



NOTE: FILTER MEDIA INSTALLATION AND TESTING SPECIFICATIONS:
 • INSTALL FILTER MEDIA IN 2 LIGHTLY COMPACTED LIFTS. TARGET DENSITY IS 90 TO 92% STANDARD PROCTOR
 • THE HYDRAULIC CONDUCTIVITY OF THE FILTER MEDIA SHALL BE VERIFIED.
 • THE TARGET CONDUCTIVITY SHALL BE 1.7 TO 2.8 X 10⁻³ CM/SEC.

CONSTRUCTION OVERSIGHT:
 INSPECTION OF THE FILTER BASIN SHALL BE PROVIDED FOR EACH PHASE OF CONSTRUCTION BY THE DESIGN ENGINEER.
 AT A MINIMUM, INSPECTIONS WILL OCCUR:
 • AFTER PRELIMINARY CONSTRUCTION OF THE FILTER GRADES AND ONCE THE UNDERDRAIN PIPES ARE INSTALLED BUT NOT BACKFILLED;
 • AFTER THE DRAINAGE LAYER IS CONSTRUCTED AND PRIOR TO THE INSTALLATION OF THE FILTER MEDIA;
 • AFTER THE FILTER MEDIA HAS BEEN INSTALLED AND SEEDED;
 • AFTER ONE YEAR TO INSPECT THE HEALTH OF THE VEGETATION AND MAKE CORRECTIONS; AND
 • ALL MATERIAL USED FOR THE CONSTRUCTION OF THE FILTER BASIN WILL BE APPROVED BY THE DESIGN ENGINEER AFTER TESTS BY A CERTIFIED LABORATORY SHOW THAT THEY ARE PASSING DEP SPECIFICATIONS.

VEGETATED UNDERDRAIN SOIL FILTER, TYPICAL
NOT TO SCALE

REV.	DATE	REVISION DESCRIPTION	DRAWN	CHK'D
4	01/04/2016	ISSUED FOR BID		
3	12/14/2015	BIDDING DOCUMENTS		
2	09/01/2015	REVISED - MAINE STATE HOUSING 90% SUBMITTAL		
1	06/09/2014	SUBMITTED TO CITY FOR SUBDIVISION & SITE PLAN REVIEW		
DATE:	06/09/2014	SCALE: NTS	PROJECT NO.: 3509.1	FILE: 3509-1_DETAILS

SITE DETAILS

MILLBROOK ESTATES - PHASE II
 300 EAST BRIDGE STREET
 WESTBROOK, MAINE 04092

WESTBROOK DEVELOPMENT CORPORATION &
 MILLBROOK ESTATES II, LP
 30 LIZA HARMON DRIVE
 WESTBROOK, MAINE 04092

St. Germain Collins

C-301

846 MAIN ST., WESTBROOK, ME 04092 TEL:207-591-7000 WWW.STGERMAINCOLLINS.COM

C:\Users\CADD\Desktop\DCS-Projects\St. Germain\3509.1_Millbrook\3509-1_DETAILS.dwg 12/30/2015 10:50:42 AM