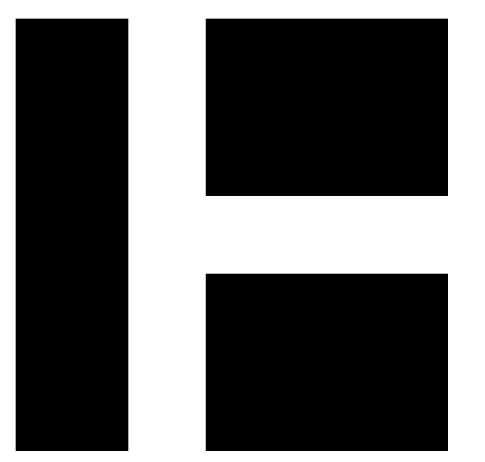
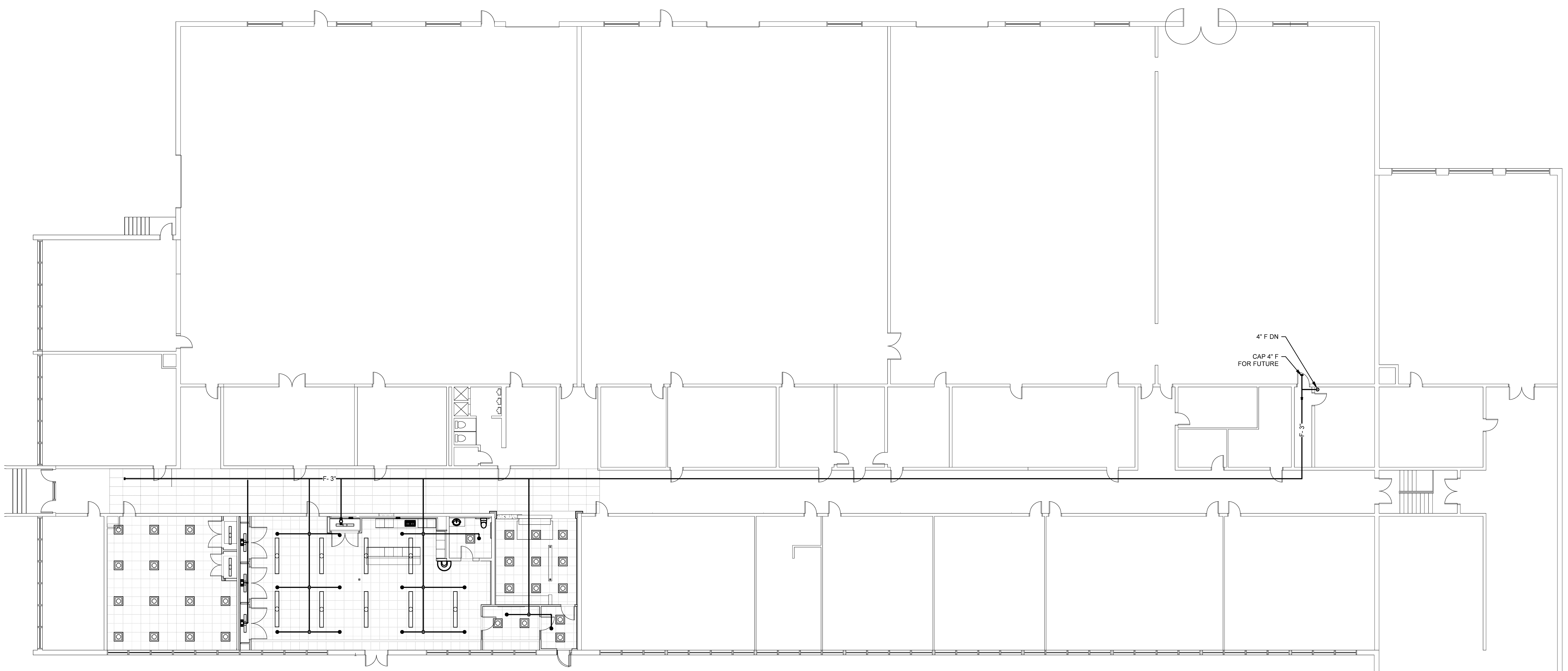
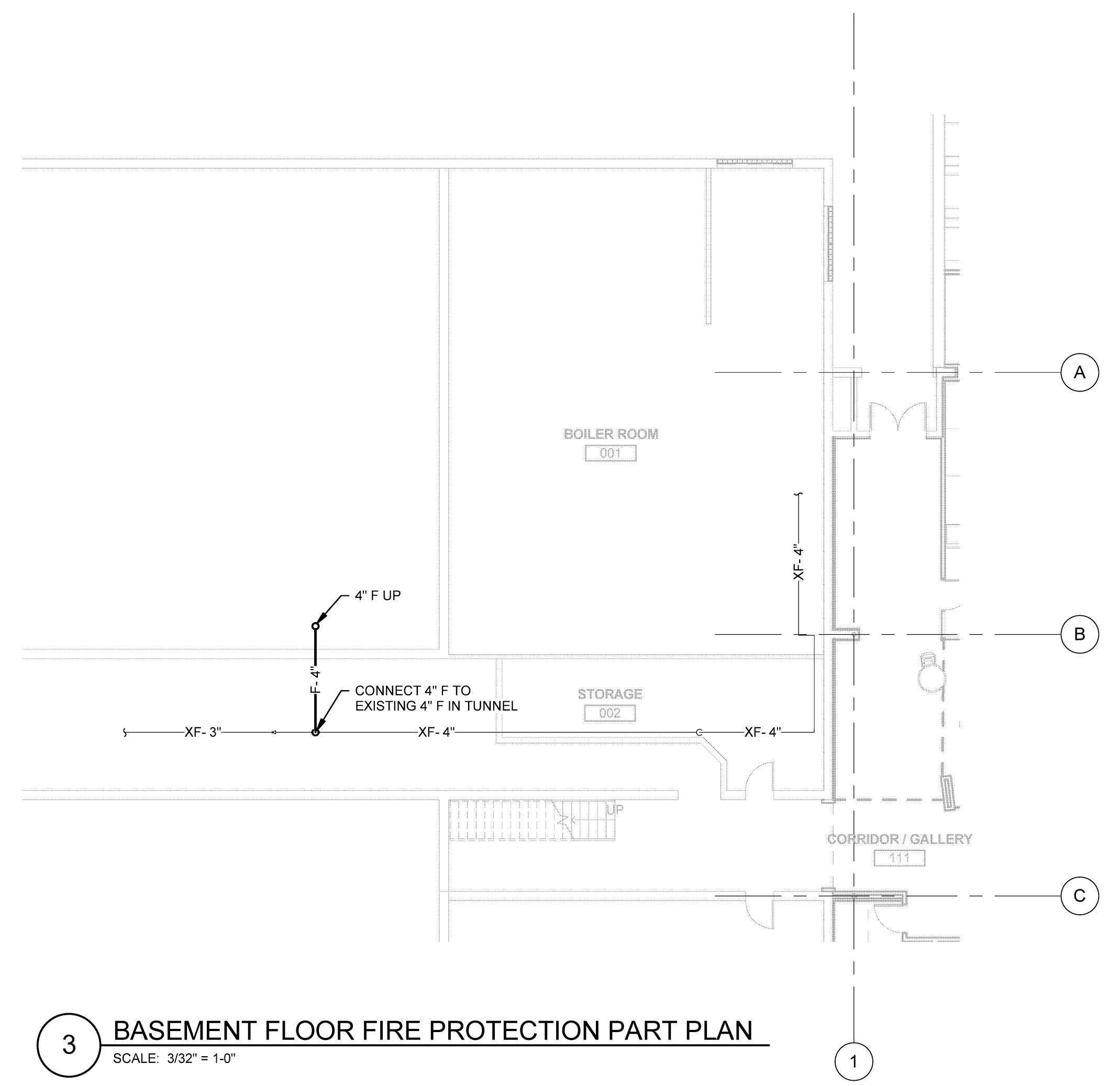


**LEGEND**

- |     |                                       |      |                         |
|-----|---------------------------------------|------|-------------------------|
| — F | SPRINKLER PIPING ABOVE FINISHED FLOOR | —    | SHUT-OFF VALVE          |
| •   | CONCEALED PENDANT WET SPRINKLER       | —    | CHECK VALVE             |
| □   | BRASS UPRIGHT WET SPRINKLER           | —    | PRESSURE REDUCING VALVE |
|     |                                       | —    | TRANSITION              |
|     |                                       | □    | CAP                     |
|     |                                       | DN   | DOWN                    |
|     |                                       | AFF  | ABOVE FINISHED FLOOR    |
|     |                                       | BFF  | BELOW FINISHED FLOOR    |
|     |                                       | TYP. | TYPICAL                 |

**FIRE PROTECTION NOTES**

1. SPRINKLERS & PIPING SHALL BE PROVIDED WITHIN THE BUILDING IN ACCORDANCE WITH NFPA 13.
2. PROVIDE SPRINKLER PROTECTION BELOW DUCTS OR OTHER OBSTRUCTIONS 48" WIDE OR WIDER PER NFPA 13, OR AT ANY OTHER LOCATION WHERE SPRINKLER DISCHARGE IS OBSTRUCTED.
3. THE FIRE SPRINKLER CONTRACTOR SHALL THOROUGHLY REVIEW ALL CONTRACT DRAWINGS AND SPECIFICATIONS THAT IMPACT THE FIRE SPRINKLER SYSTEMS PRIOR TO BID. ANY QUESTIONS THAT AFFECT THE DESIGN AND INSTALLATION OF THE FIRE SPRINKLER SYSTEM SHALL BE RESOLVED BEFORE CONTRACT IS AWARDED.
4. SPRINKLER CONTRACTOR SHALL PREPARE AND SUBMIT SHOP DRAWINGS AS REQUIRED BY THE SPECIFICATIONS.



**HARRIMAN**

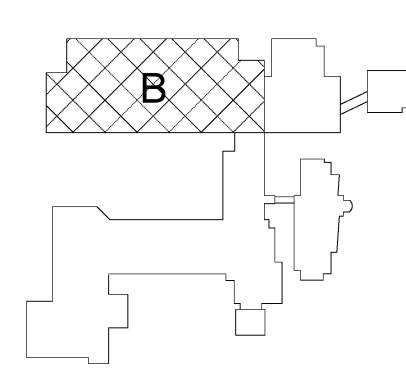
AUBURN PORTLAND PORTSMOUTH BOSTON

**CENTRAL MAINE  
COMMUNITY COLLEGE  
ECE AREA RENOVATION**

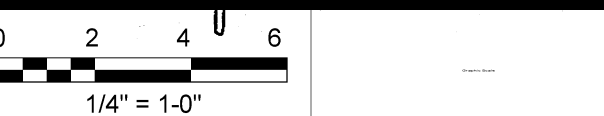
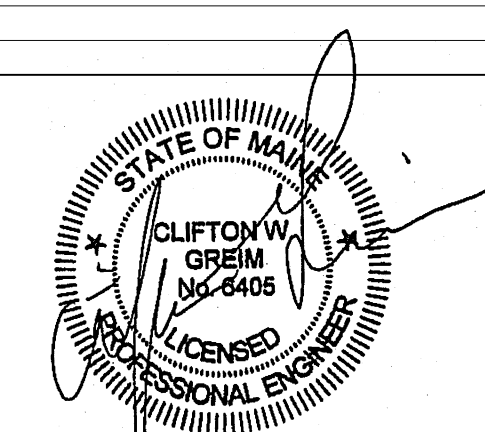
AUBURN, MAINE

Harriman Project No. 16611

Key Plan Proj North



Issues and Revisions	
Date	Description
03-29-17	CONSTRUCTION DOCUMENTS



PA/PE: CG  
 Drawn By: MAM  
 © 2017  
 Harriman Associates

**FIRST FLOOR FIRE PROTECTION**

**F10.1**