



HARRIMAN

AUBURN PORTLAND PORTSMOUTH BOSTON

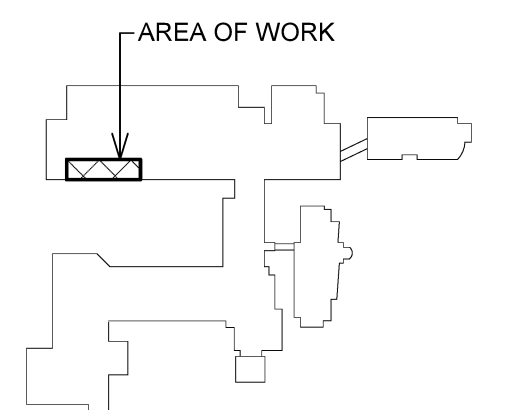
CENTRAL MAINE  
COMMUNITY COLLEGE  
ECE AREA RENOVATION

AUBURN, MAINE

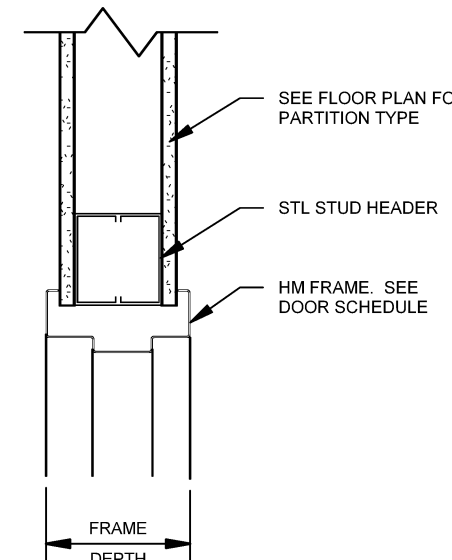
Harriman Project No. 16611

Key Plan

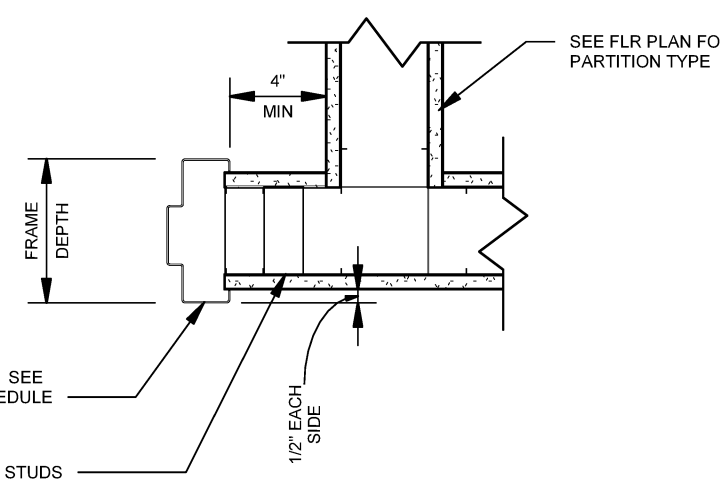
Proj North



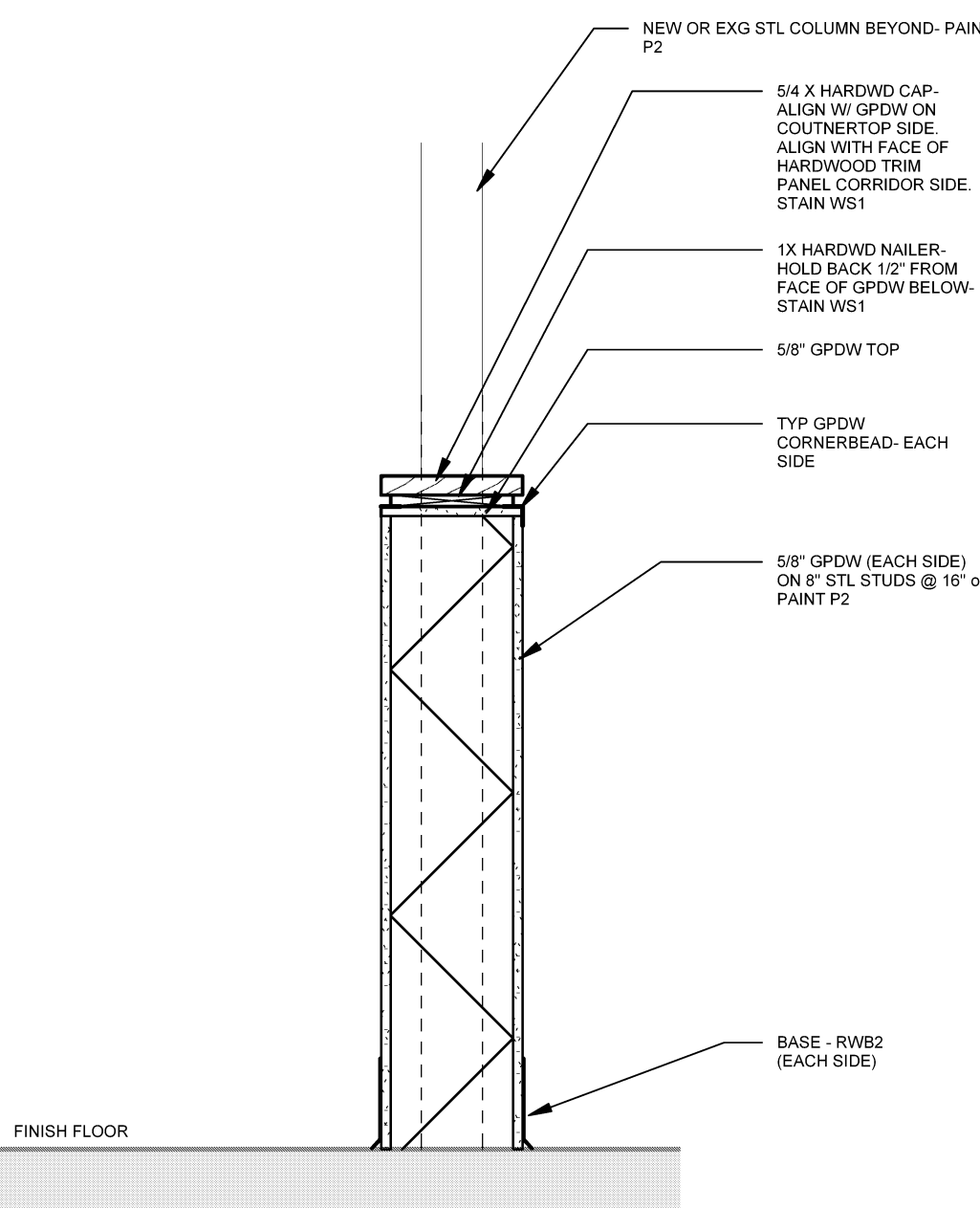
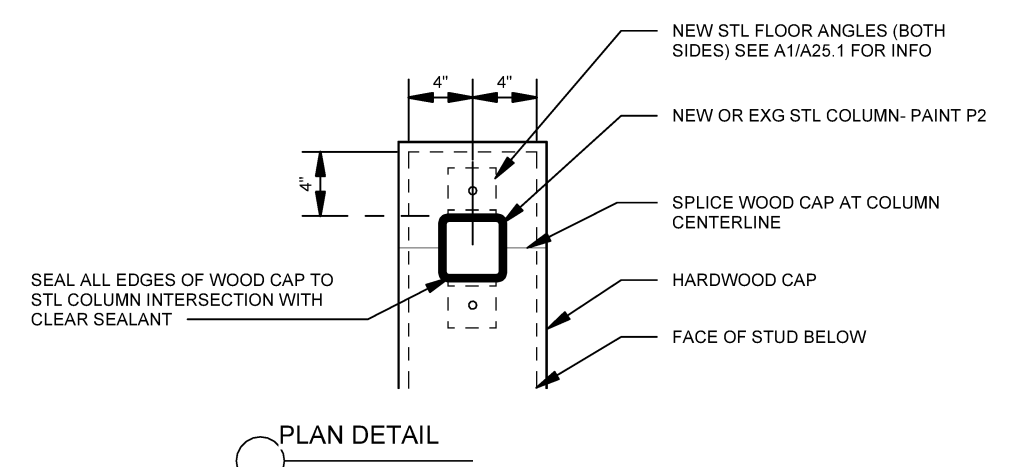
AREA OF WORK



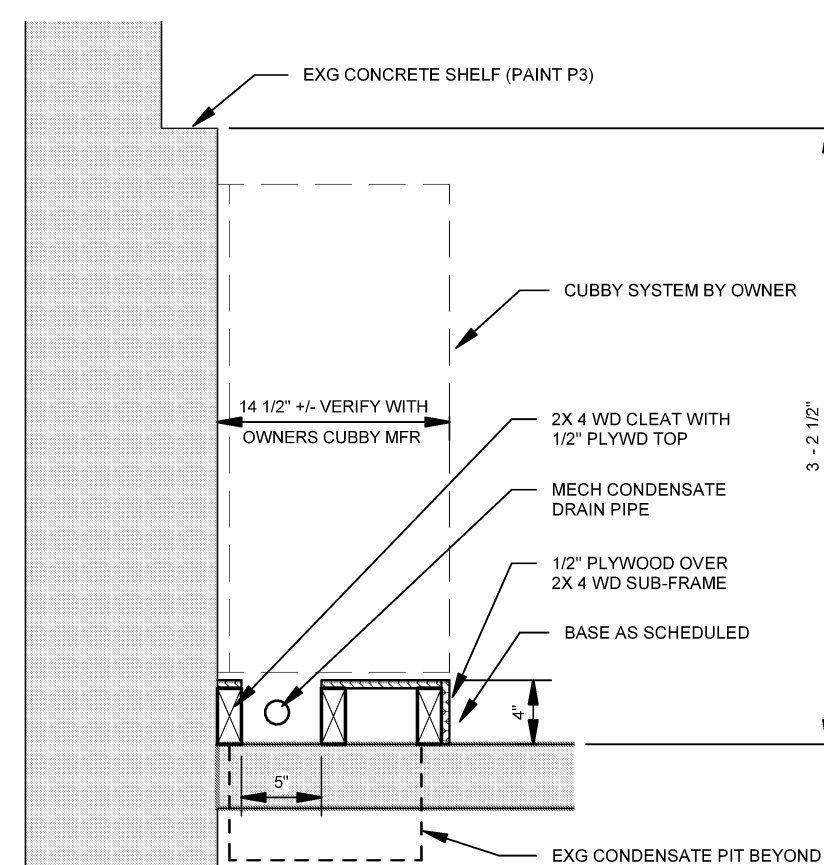
E6 DOOR HEAD DETAIL- GYP BD  
SCALE: 1 1/2" = 1'-0"



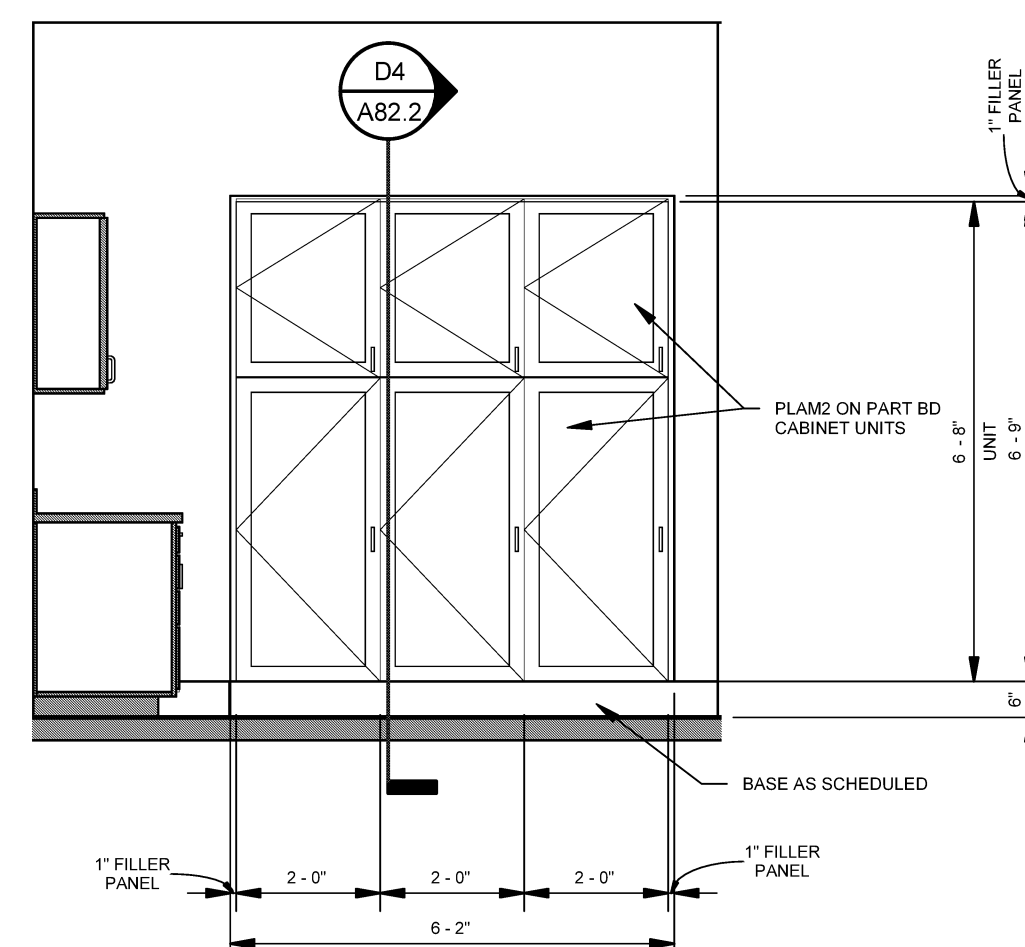
D6 DOOR JAMB DETAIL- GYP BD  
SCALE: 1 1/2" = 1'-0"



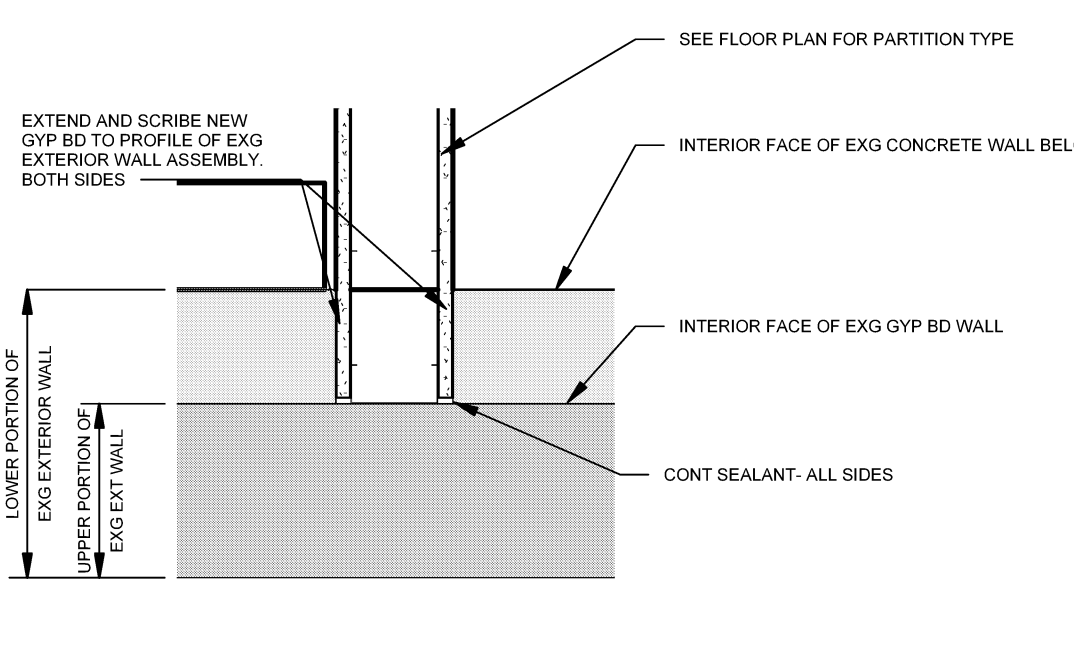
B6 EXIT HALL HALF WALL  
SCALE: 1" = 1'-0"



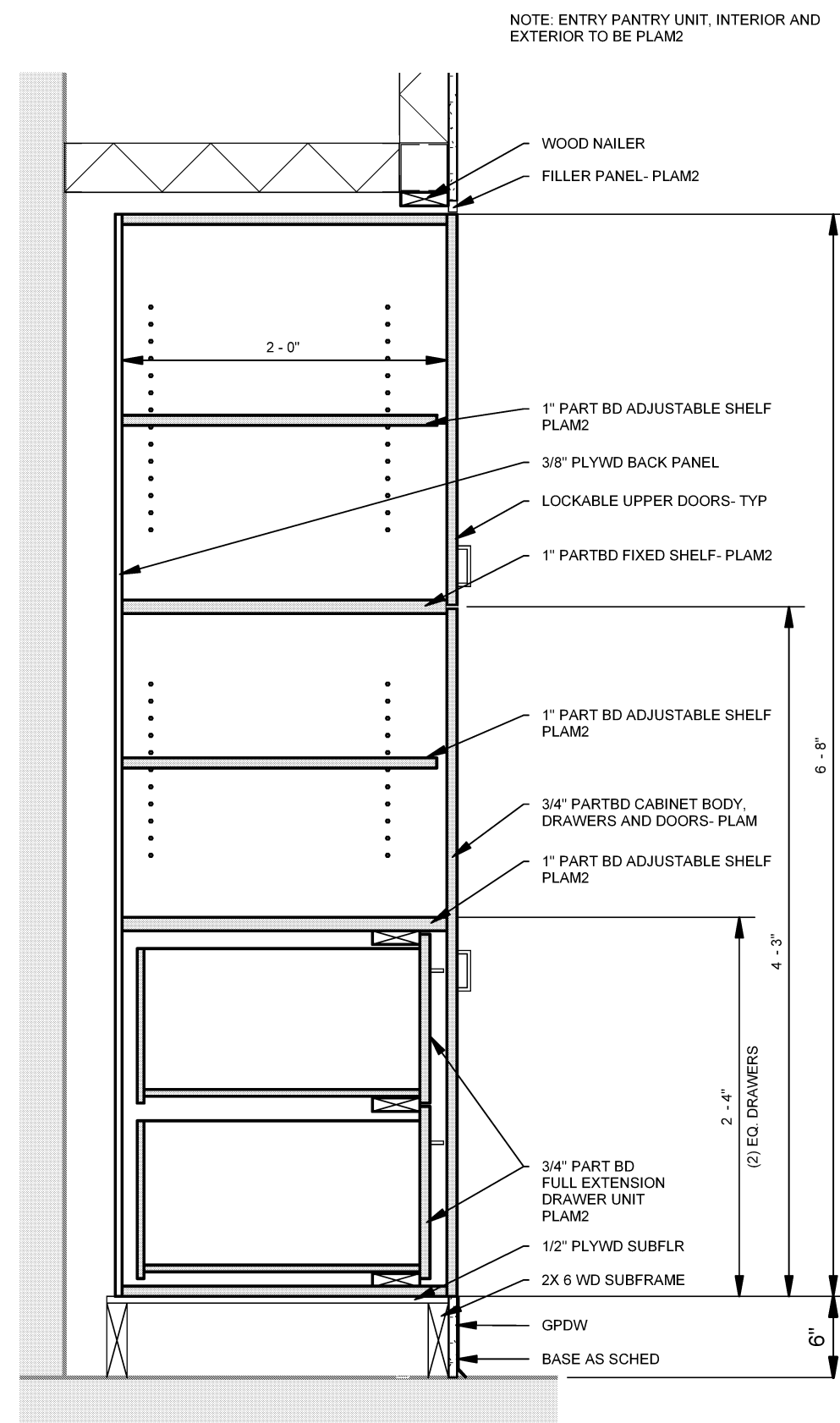
A6 RAISED FLOOR AT CUBBIES  
SCALE: 1" = 1'-0"



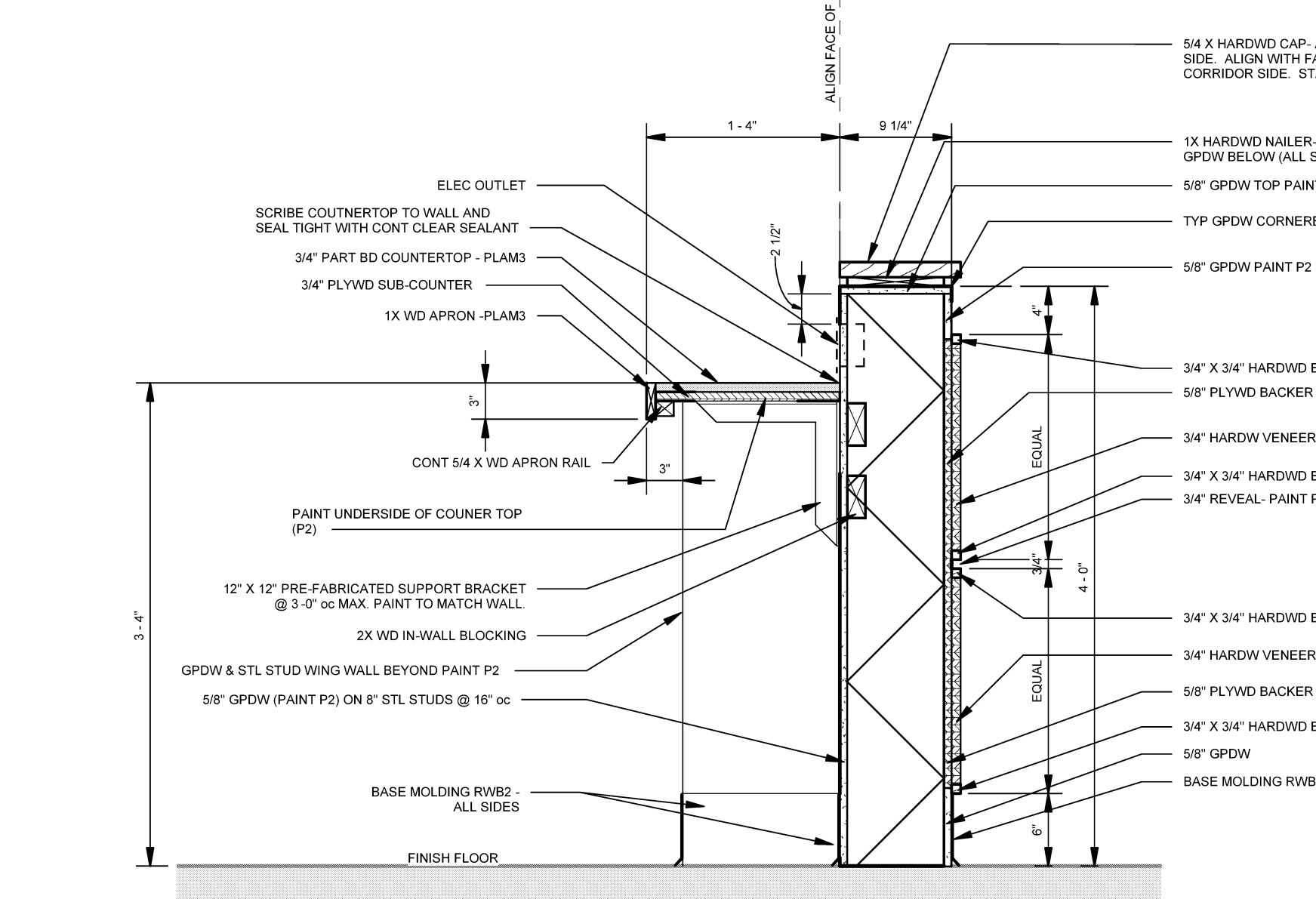
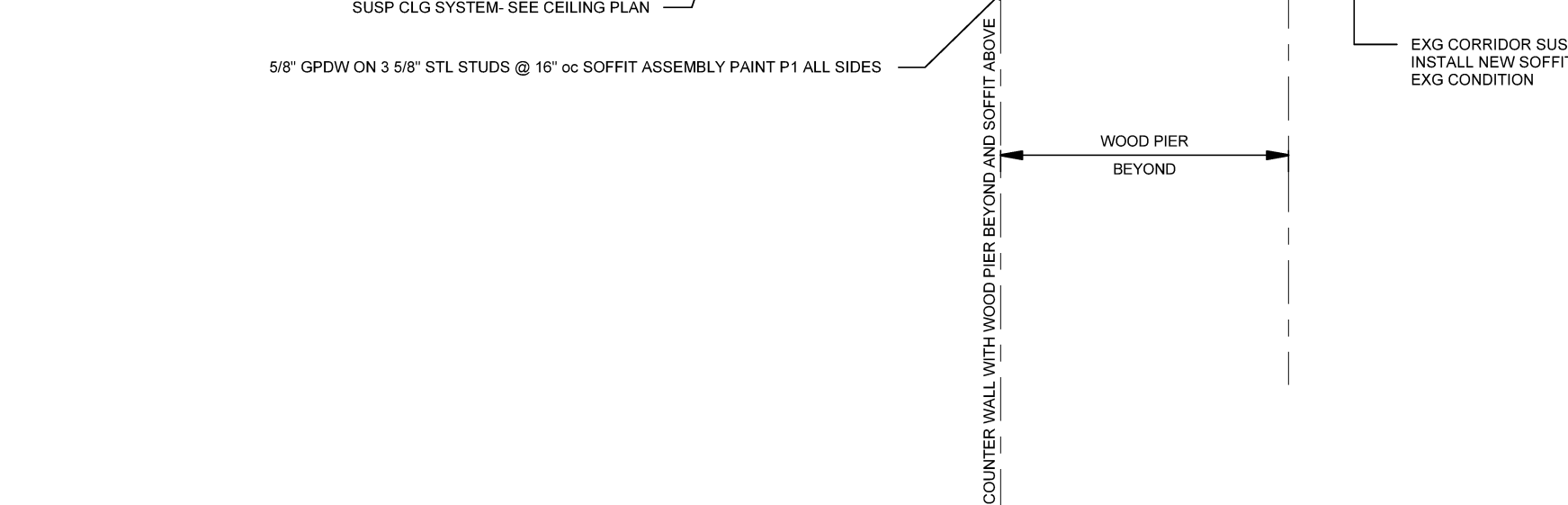
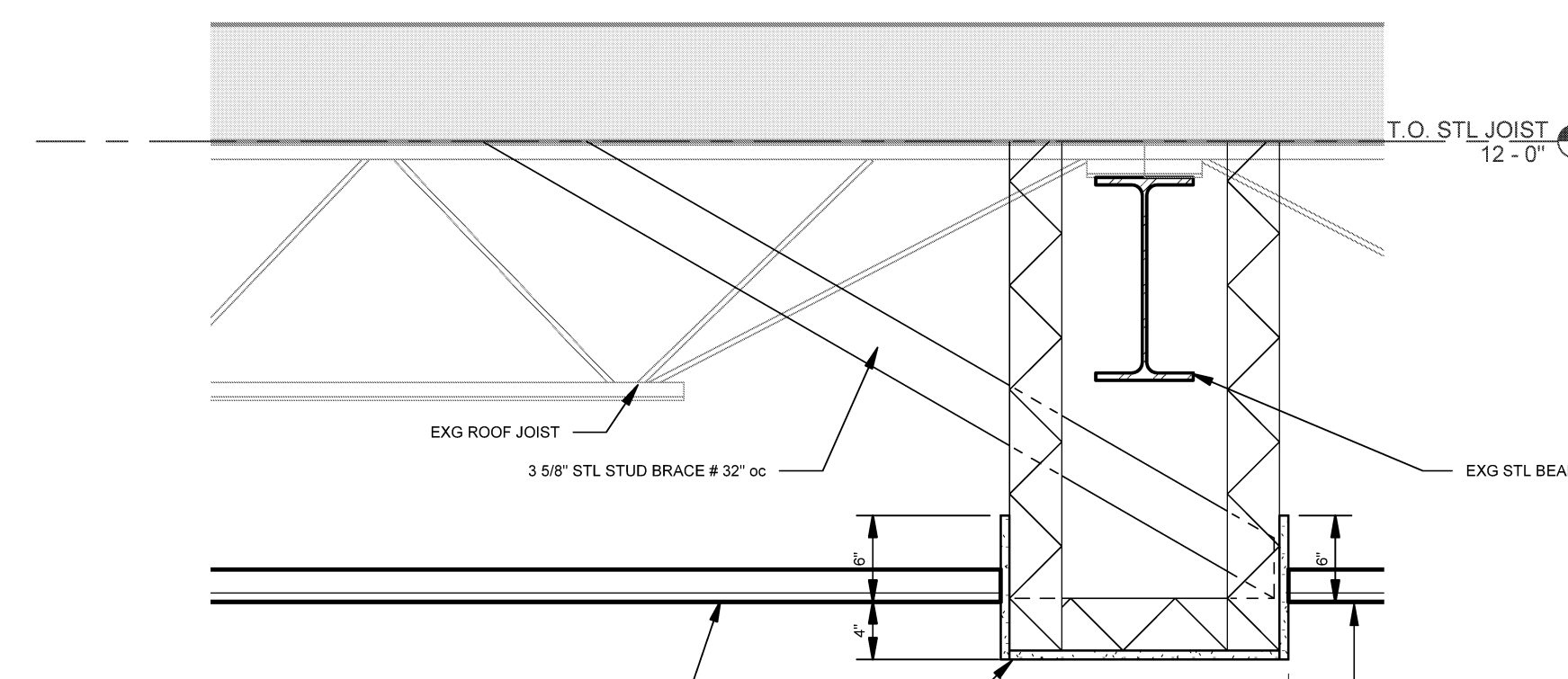
E5 KITCHEN PANTRY ELEVATION  
SCALE: 3/8" = 1'-0"



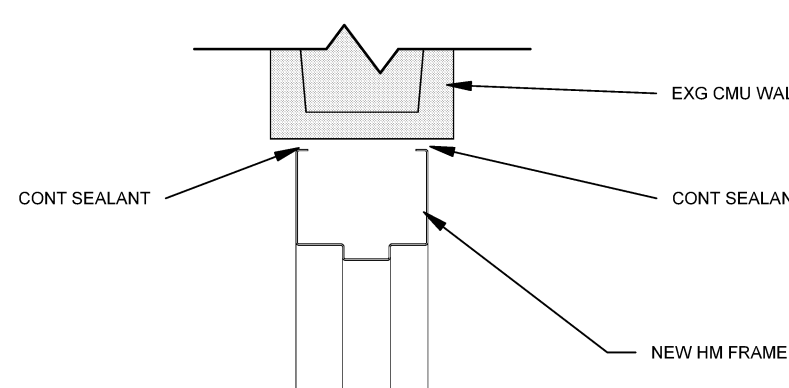
D5 NEW WALL TO EXG WALL PLAN DTL  
SCALE: 1 1/2" = 1'-0"



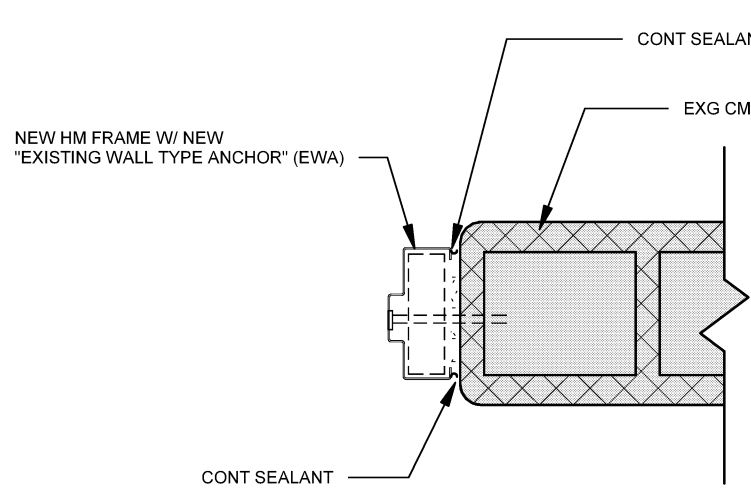
D4 PANTRY SECTION  
SCALE: 1" = 1'-0"



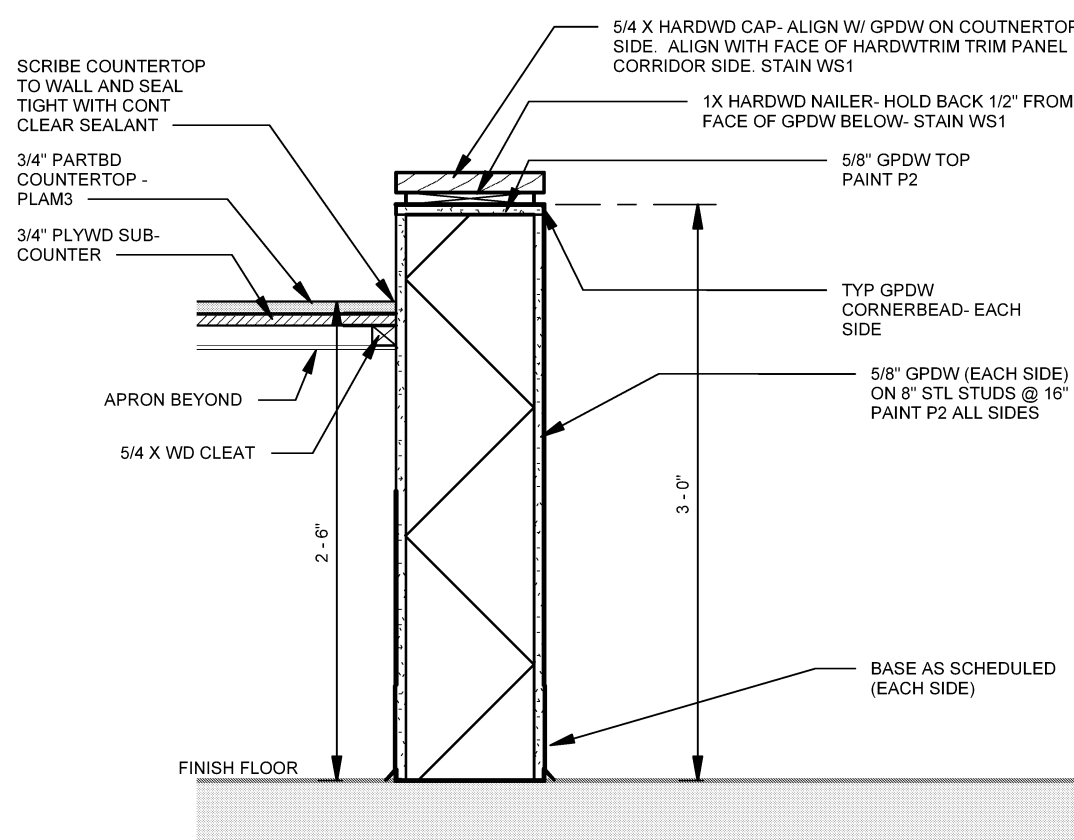
A4 CORRIDOR HALF WALL  
SCALE: 1" = 1'-0"



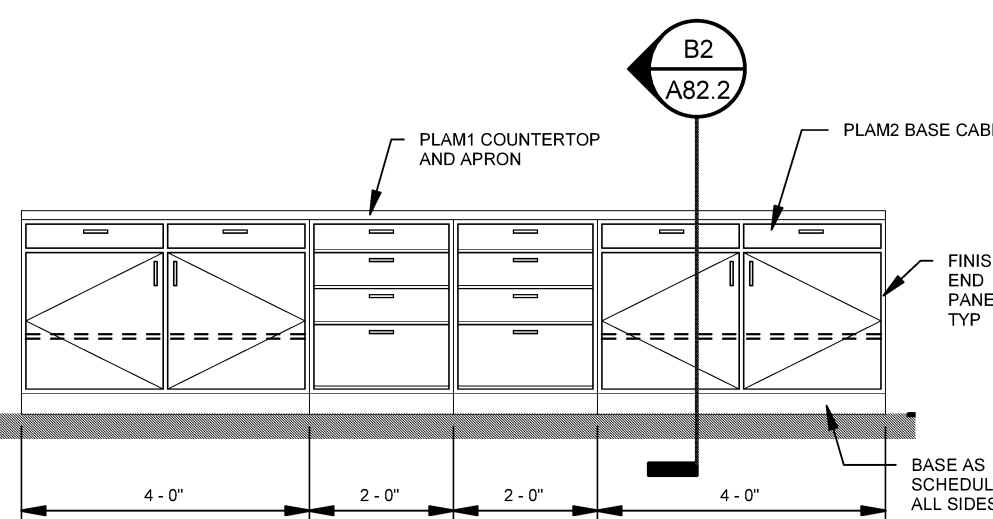
E3 DOOR HEAD DETAIL - CMU  
SCALE: 1 1/2" = 1'-0"



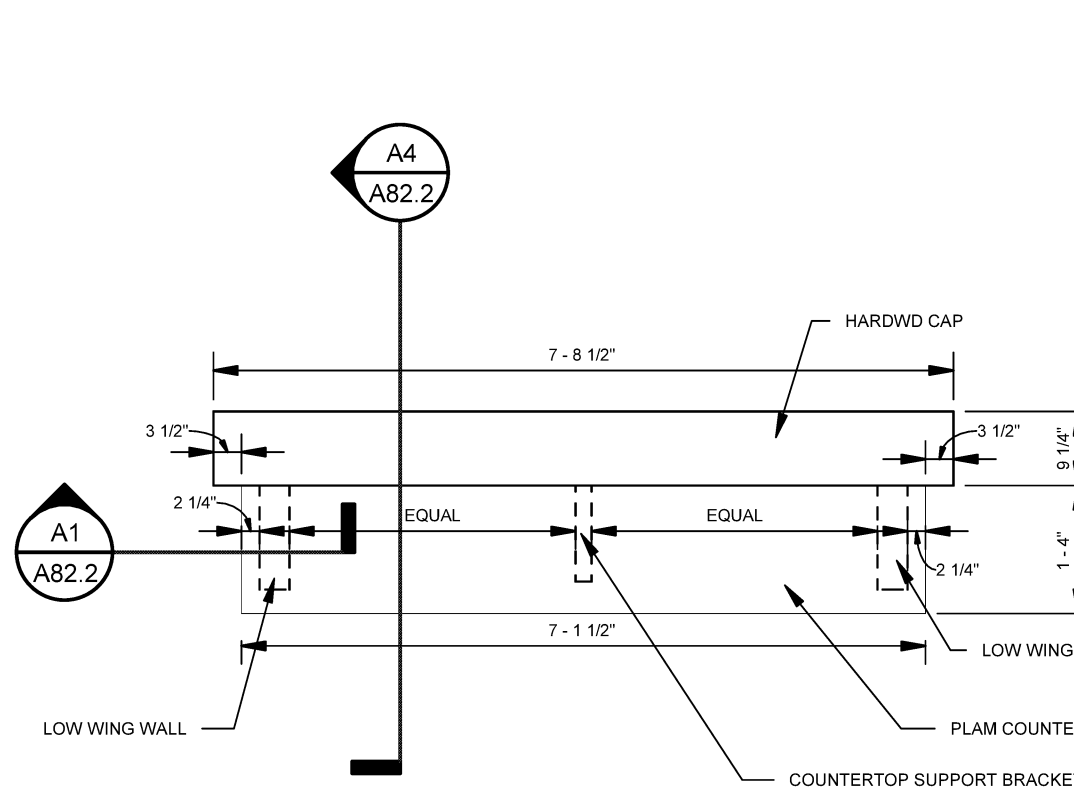
D3 DOOR JAMB DETAIL - CMU  
SCALE: 1 1/2" = 1'-0"



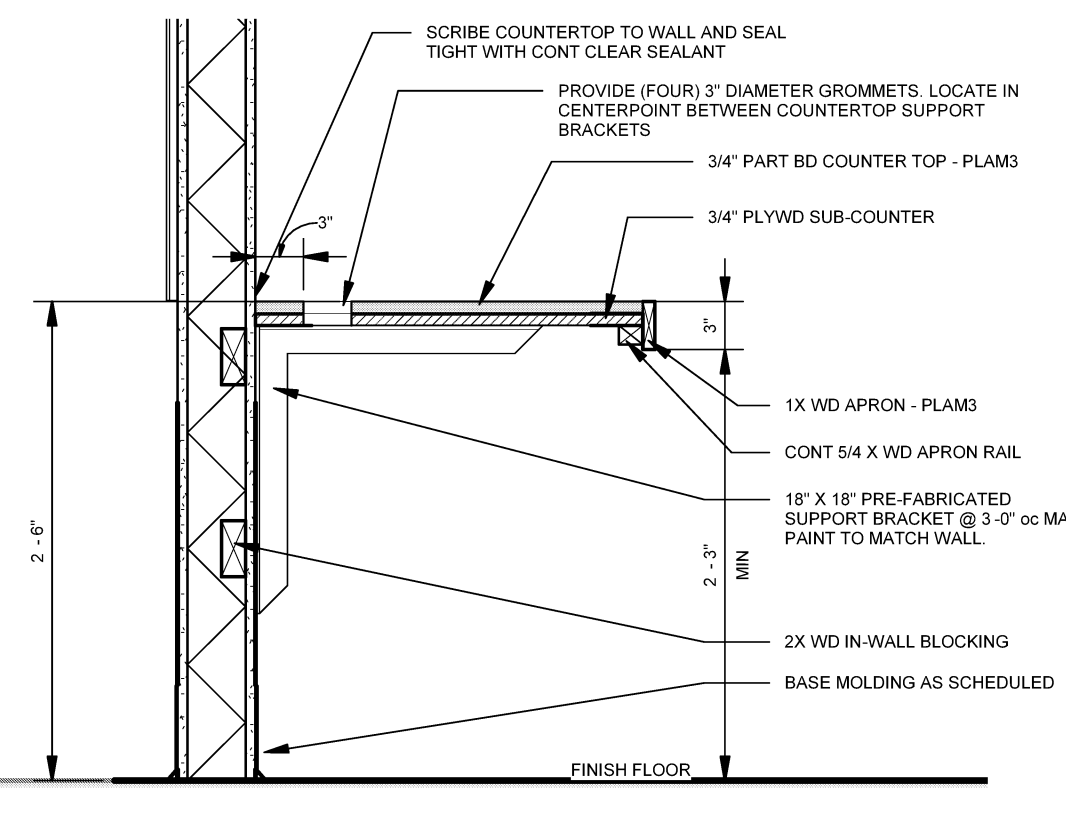
C3 COMPUTER TABLE HALF WALL-  
SCALE: 1" = 1'-0"



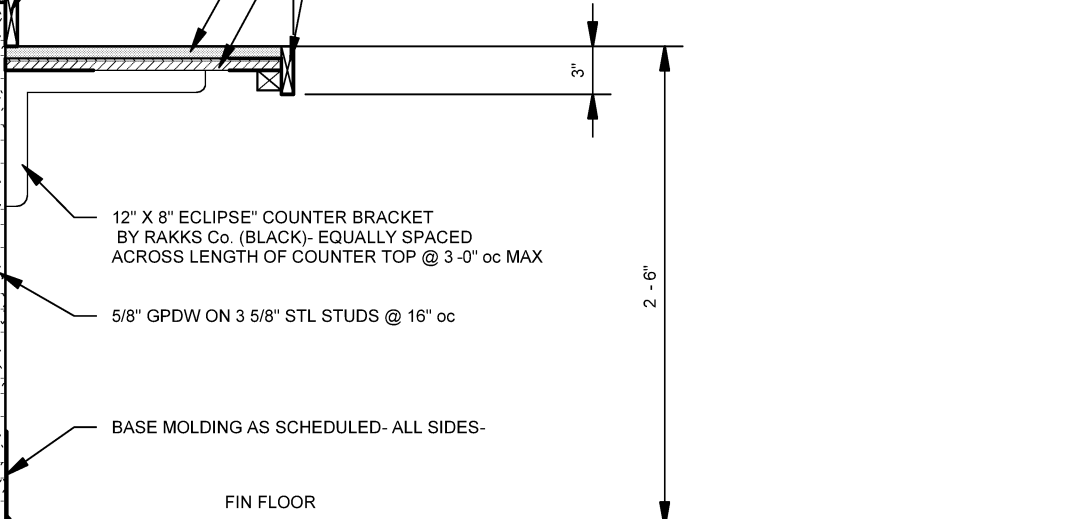
B3 ISLAND ELEVATION - KITCHEN SIDE  
SCALE: 3/8" = 1'-0"



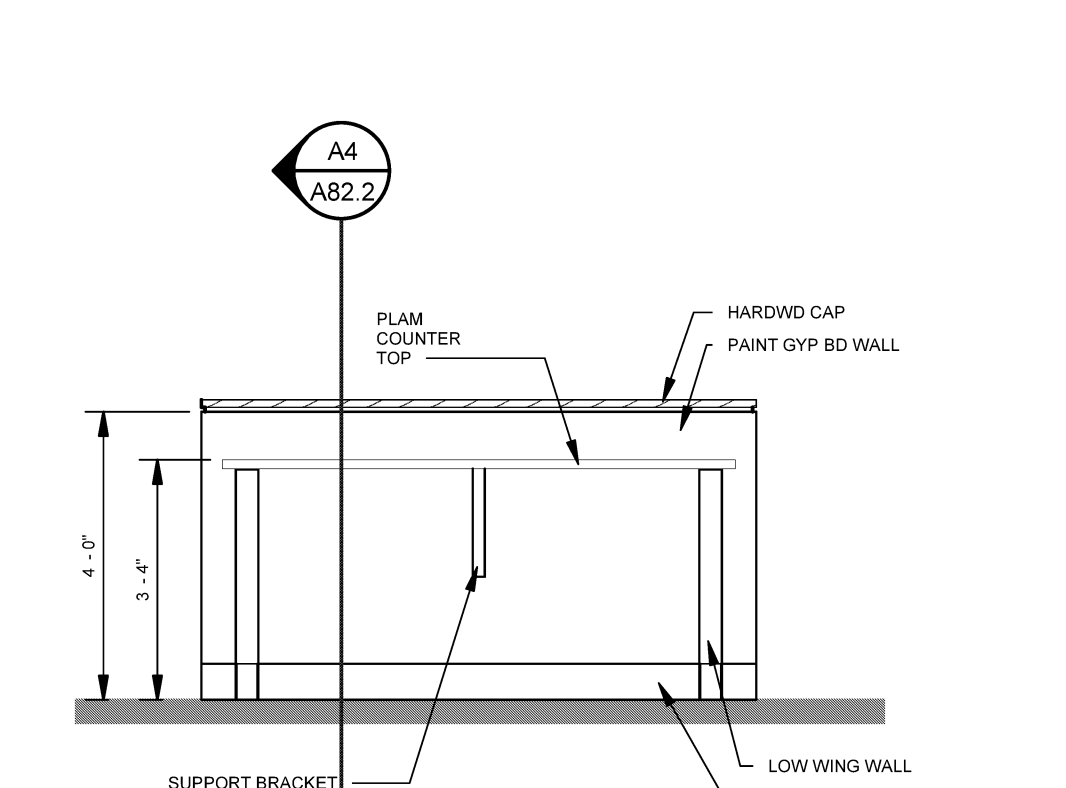
A3 CORRIDOR HALF WALL/COUNTER PLAN  
SCALE: 1/2" = 1'-0"



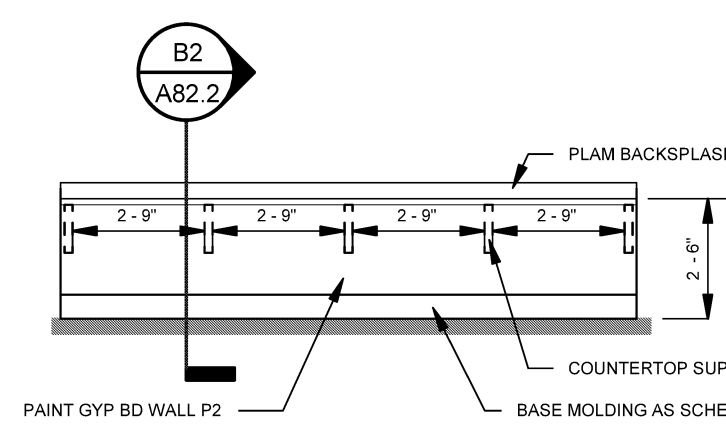
C2 COMPUTER COUNTER DETAIL  
SCALE: 1" = 1'-0"



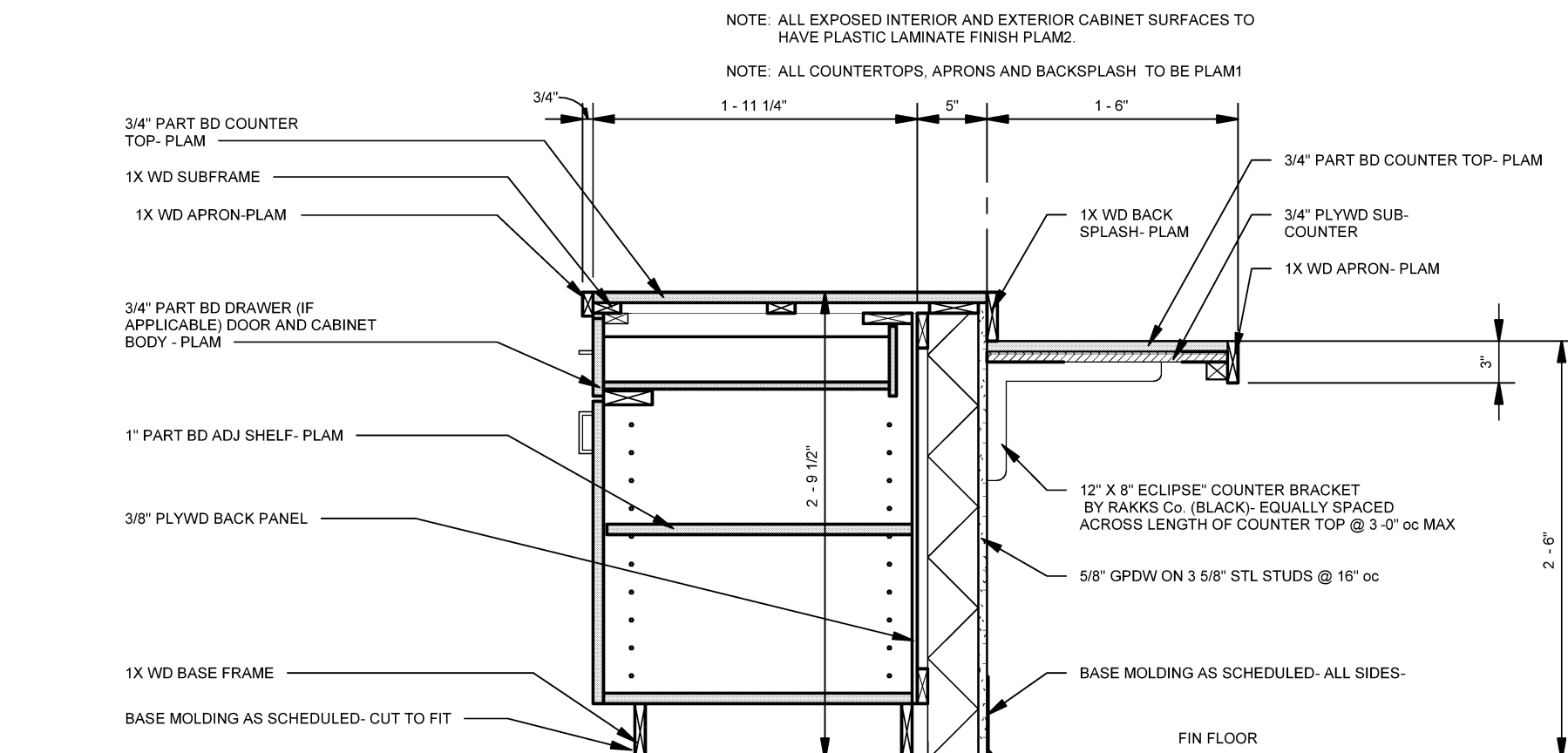
B2 ISLAND SECTION  
SCALE: 1" = 1'-0"



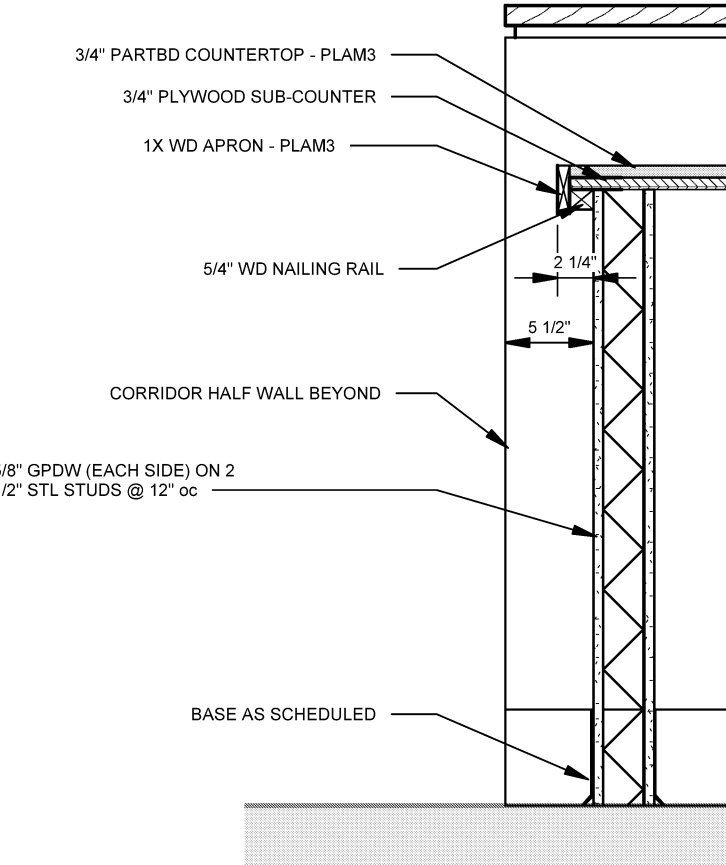
A2 CORRIDOR HALF WALL /CTR ELEVATION  
SCALE: 3/8" = 1'-0"



C1 ISLAND ELEVATION- CLASSROOM SIDE  
SCALE: 1/4" = 1'-0"

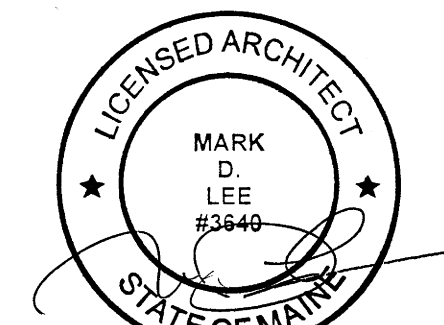


B2 ISLAND SECTION  
SCALE: 1" = 1'-0"



A1 CORRIDOR HALF WALL / COUNTER  
SCALE: 1" = 1'-0"

| Issues and Revisions |                        |
|----------------------|------------------------|
| Date                 | Description            |
| 03-29-17             | CONSTRUCTION DOCUMENTS |



PA / PE: MDL  
Drawn By: MCM

© 2017  
Harriman Associates

INTERIOR DETAILS

A82.2