



HARRIMAN

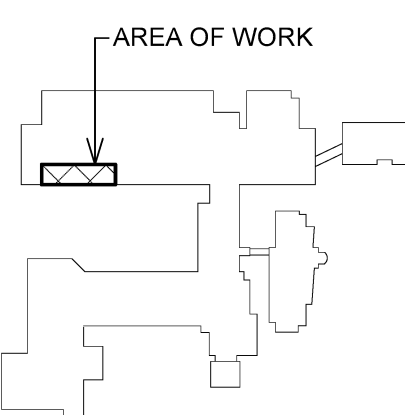
AUBURN PORTLAND PORTSMOUTH BOSTON

CENTRAL MAINE COMMUNITY COLLEGE ECE AREA RENOVATION

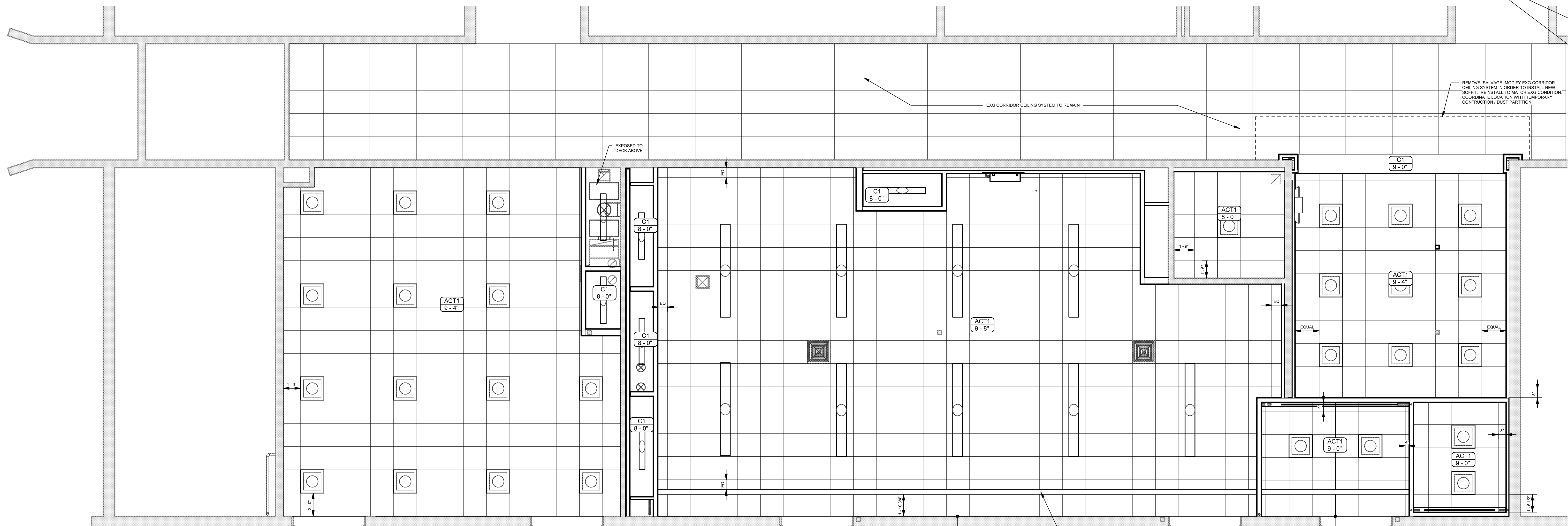
AUBURN, MAINE

Harriman Project No. 16611

Key Plan Proj North



GC NOTE: SEE PLUMBING DRAWINGS FOR ADDITIONAL CEILING WORK TO INSTALL NEW SPRINKLER LINES. REMOVE, SALVAGE AND REINSTALL EXG CEILING SYSTEM TO MATCH EXG CONDITION. COORDINATE ALL WORK WITH PLUMBING SUB-CONTRACTOR.



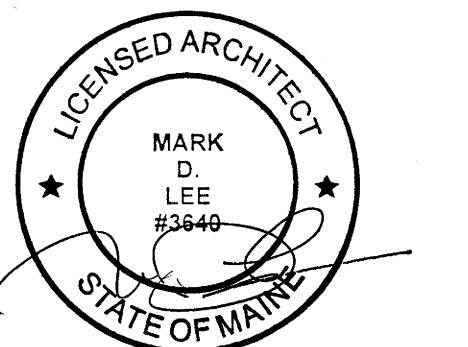
**LEGEND**

ACT1	SUSPENDED ACOUSTICAL TILE CEILING SYSTEM- SEE A71.1 FOR INFO
C1	5/8" GYP BD ON 3 5/8" STL STUDS @ 16" oc CEILING SYSTEM

A1 FIRST FLOOR CEILING PLAN  
SCALE: 1/4" = 1'-0"

**Issues and**

Date	Description
03-29-17	CONSTRUCTION DOCUMENTS



PA / PE: MDL © 2017  
Drawn By: MCM Harriman Associates

FIRST FLOOR CEILING PLAN

A70.1