



HARRIMAN

AUBURN PORTLAND PORTSMOUTH BOSTON

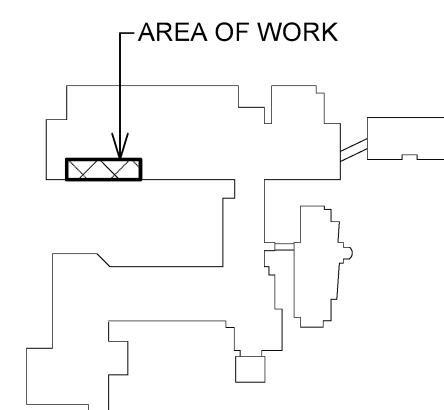
CENTRAL MAINE  
COMMUNITY COLLEGE  
ECE AREA RENOVATION

AUBURN, MAINE

Harriman Project No. 16611

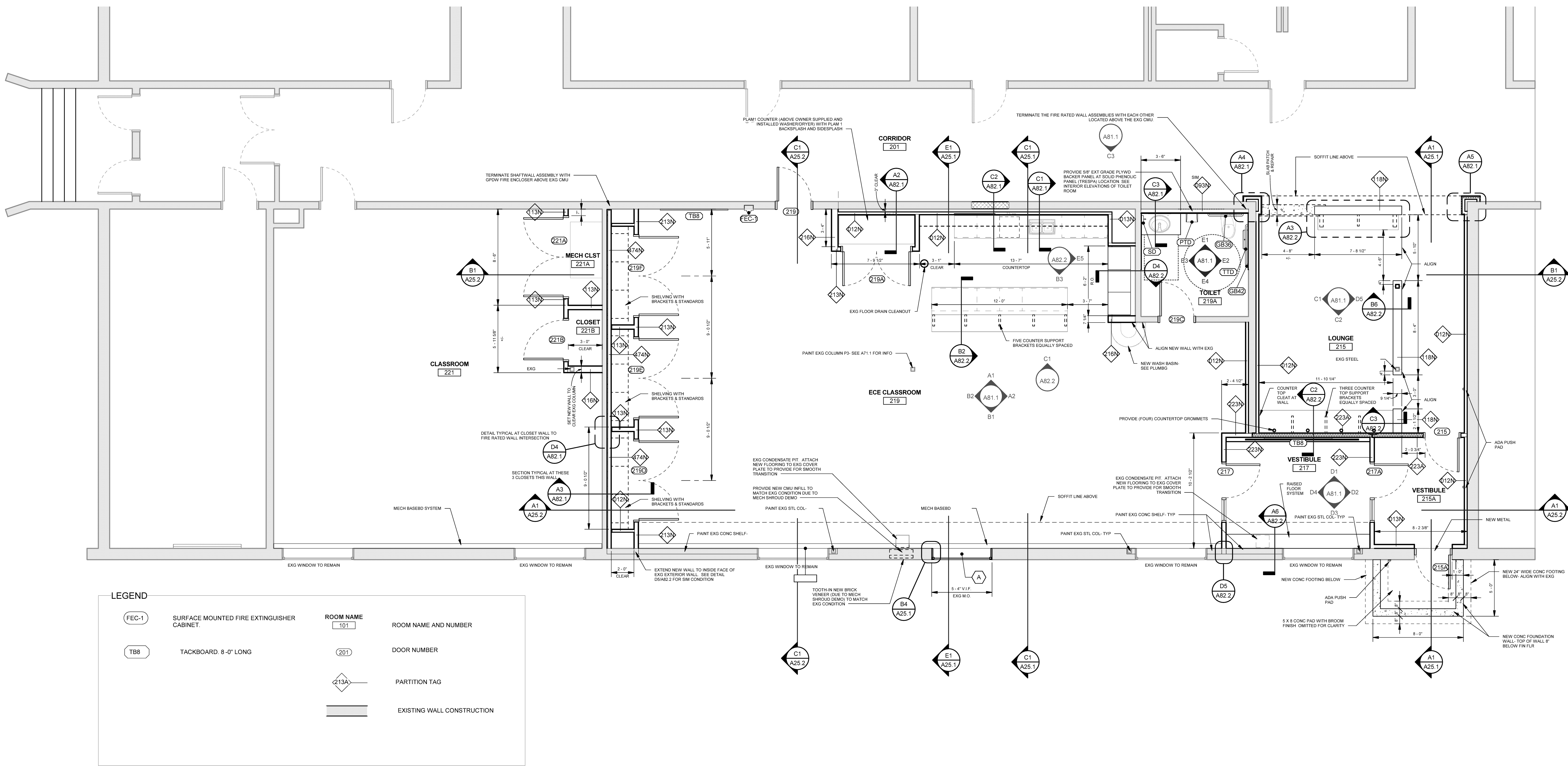
Key Plan

Proj North



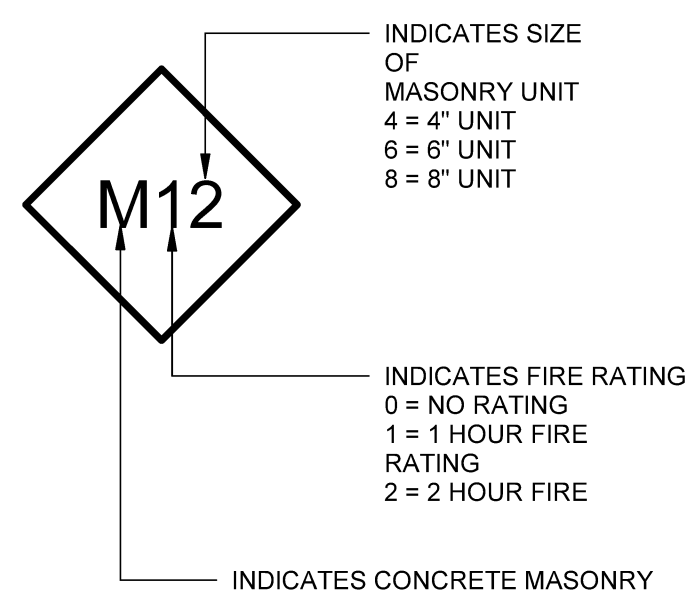
GENERAL NOTES

- ALL DIMENSIONS ARE TAKEN FROM FACE OF MASONRY OR FACE OF GPDW U.N.O.
- SEE MECHANICAL, ELECTRICAL, AND PLUMBING DRAWINGS FOR EQUIPMENT PLACEMENT.
- FILL ALL VOIDS IN MASONRY BLOCK WALLS AT REMOVALS.
- PROVIDE CONTROL JOINTS IN GPDW PARTITIONS AT A MAX SPACING OF 30'-0" U.N.O. MAX SPACING AT ABUSE GPDW IS 28'-0" U.N.O. LOCATE AT EDGE OF DOOR FRAME UP TO CEILING WHERE PRACTICAL. REVIEW LOCATIONS WITH THE ARCHITECT.
- INTERIOR SIGNAGE TO BE SUPPLIED BY THE OWNER AND INSTALLED BY THE GC.
- FURNITURE TO BE PROVIDED BY AND INSTALLED BY THE OWNER, UNLESS NOTED OTHERWISE.

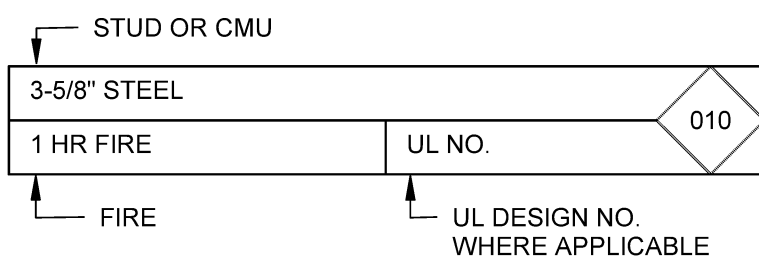
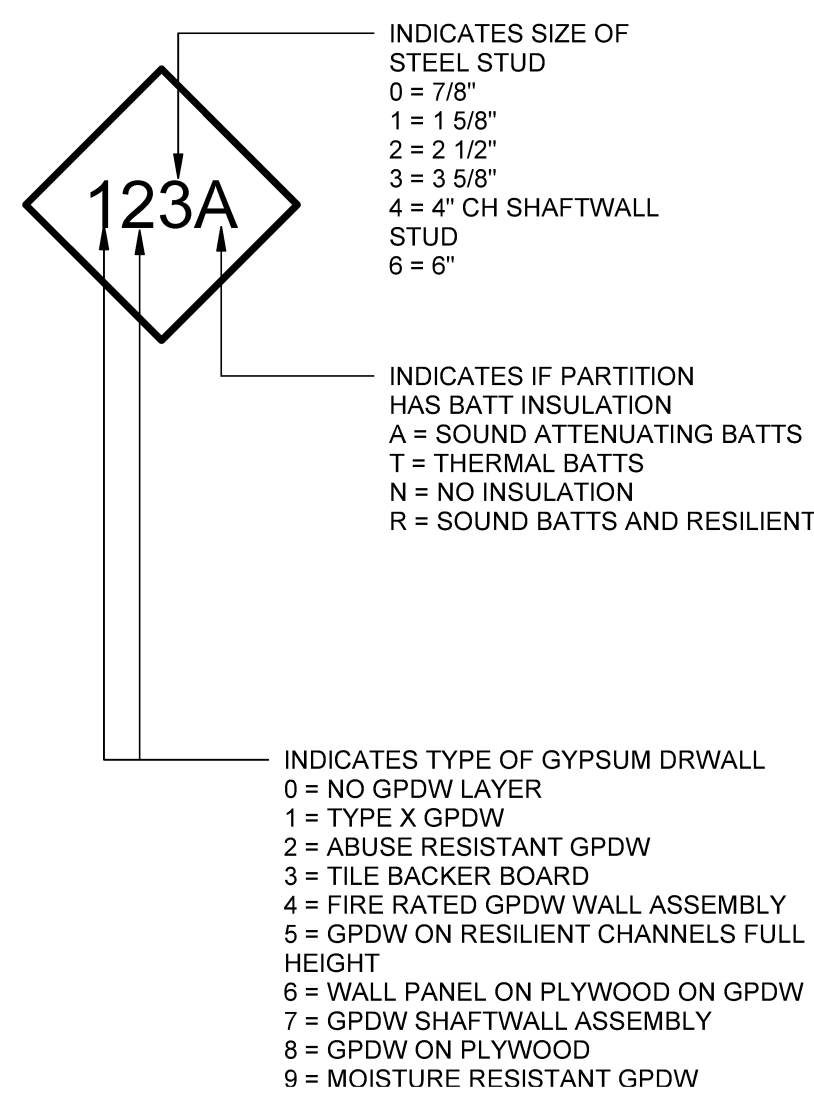


B1 FIRST FLOOR PLAN  
SCALE: 1/4" = 1'-0"

MASONRY  
PARTITION TAG  
KEY



STEEL STUD  
PARTITION TAG  
KEY



A1 PARTITION KEY  
SCALE: 1 1/2" = 1'-0"

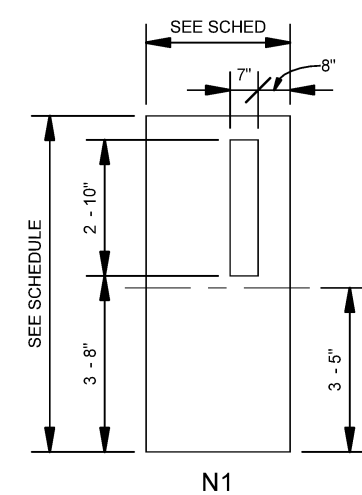
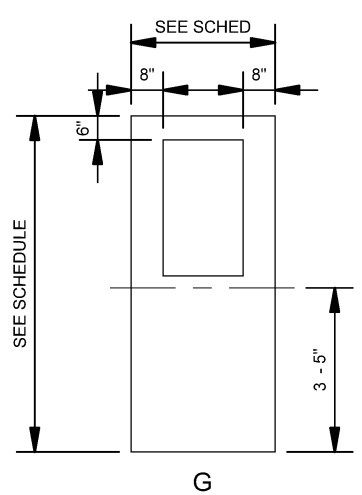
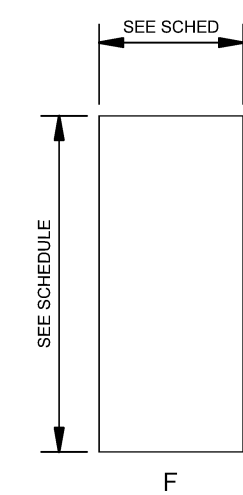
GENERAL PARTITION TYPE NOTES

- IN TOILET ROOMS WITH GPDW WALLS, PROVIDE 5/8" MOISTURE RESISTANT GPDW IN LIEU OF GPDW ON ALL STUD PARTITIONS WITHIN THE ROOM. WHERE THE GPDW EXTENDS ABOVE THE TOILET ROOM CEILING, PROVIDE MOISTURE RESISTANT TO A MIN 6" ABOVE THE CEILING AND USE 5/8" GPDW TO THE TOP OF THE PARTITION.
- ALL GPDW TO BE TYPE-X GPDW. ALL GPDW EXPOSED TO THE ROOM SIDE WITHIN THE ECE CLASSROOM #219 IS TO BE ABUSE RESISTANT GPDW.
- USE 20 ga STEEL STUDS IN PARTITIONS WITH ABUSE RESISTANT GPDW, TILE BACKER BOARD AND STC RATED WALLS.
- ALL FIRE-RATED PARTITIONS SHALL BE STENCILED ON THE WALL SURFACE JUST ABOVE THE CEILING LINE INDICATING THE PARTITIONS FIRE-RATING: "1 HR", "2 HR", ETC IN RED OR ORANGE PAINT ON EACH SIDE OF THE PARTITION. SMOKE PARTITIONS "SMOKE" IN GREEN PAINT.
- ALL PARTITIONS EXTEND TO UNDERSIDE OF ROOF DECK. SEAL ALL PARTITIONS TO DECK FOR SMOKE & SOUND CONTROL. FILL ALL VOIDS BETWEEN TOP OF PARTITION AND DECK.
- WHERE GPDW & STUD PARTITIONS INTERSECT BEAMS OR JOIST, FRAME AROUND BOTH SIDES OF BEAMS & JOIST WITH METAL STUDS AND GPDW TO MAINTAIN CONTINUITY OF PARTITION TO UNDERSIDE OF DECK.
- WHERE CMU WALLS, RATED AND NON-RATED, INTERSECT BEAMS OR JOISTS, FRAME AROUND BOTH SIDES OF BEAMS OR JOIST WITH METAL STUDS AND GPDW TO MAINTAIN CONTINUITY OF PARTITION TO UNDERSIDE OF DECK.
- CONTRACTOR IS RESPONSIBLE FOR FIELD VERIFYING ACTUAL CONDITIONS AND MODIFYING CLOSURE DETAILS TO MEET ACTUAL CONDITIONS AND MAINTAINING CONTINUITY OF PARTITIONS FROM FLOOR TO DECK ABOVE.
- WHERE 5/8" ABUSE RESISTANT GPDW IS NOTED, EXTEND UP TO 8" ABOVE CEILING THEN USE 5/8" GPDW UP TO DECK AND SEAL TIGHT.
- PROVIDE 3/8" ACOUSTICAL SEALANT JOINT WITH CASING BEAD AROUND PERIMETER OF GPDW ASSEMBLIES WHEN ABUTTING DISSIMILAR MATERIALS, UNLESS NOTED OR DETAILED ELSEWHERE IN THIS SET.

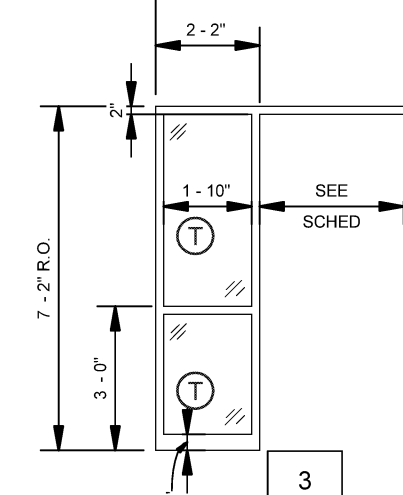
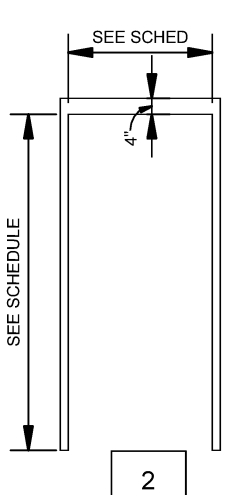
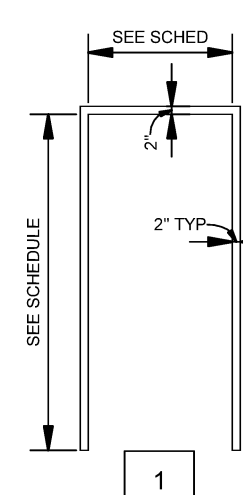
A2 PARTITION NOTES  
SCALE: 1 1/2" = 1'-0"

DOOR AND FRAME SCHEDULE

DOOR MARK	DOOR PANELS						FRAME						FIRE RATING	REMARKS
	PANEL SIZE				MAT	TYPE	FIN / MAT	TYPE	DETAILS					
	No.	W	H	T					HEAD	JAMB	SILL			
1ST FLOOR														
215	(1)	3'-0"	7'-0"	1 3/4"	WD	F	HM	1	E6/A82.2	D6/A 82.2	--	--	SMOKE SEAL, ADA OPERATOR, STAIN WS1	
215A	(1)	3'-0"	7'-0"	1 3/4"	HM	G	EXG	EXG	EXG	EXG	--	--	INSULATED, WEATHERSTRIPPING, ADA OPERATOR	
217	(1)	3'-0"	7'-0"	1 3/4"	VD	G	HM	3	E6/A82.2	D6/A82.2	--	--	STAIN DOOR WS-1	
217A	(1)	3'-0"	7'-0"	1 3/4"	VD	G	HM	3	E6/A82.2	D6/A82.2	--	45 MIN	STAIN DOOR WS-1	
219	(1)	3'-0"	7'-0"	1 3/4"	VD	N1	HM	2	E3/A82.2	D3/A82.2	--	45 MIN	STAIN DOOR WS-1	
219A	(2)	3'-0"	7'-0"	1 3/4"	VD	F	HM	1	E6/A82.2	D6/A82.2	--	--	STAIN DOOR WS-1	
219C	(1)	3'-0"	7'-0"	1 3/4"	VD	N1	EXG	EXG	EXG	EXG	EXG	--	STAIN DOOR WS-1	
219D	(2)	3'-6"	7'-0"	1 3/4"	VD	F	HM	1	E6/A82.2	D6/A 82.2	--	--	PAINT DOOR AND FRAME TO MATCH WALL	
219E	(2)	3'-6"	7'-0"	1 3/4"	VD	F	HM	1	E6/A82.2	D6/A 82.2	--	--	PAINT DOOR AND FRAME TO MATCH WALL	
219F	(2)	3'-6"	7'-0"	1 3/4"	VD	F	HM	1	E6/A82.2	D6/A 82.2	--	--	PAINT DOOR AND FRAME TO MATCH WALL	
221A	(2)	3'-6"	7'-0"	1 3/4"	VD	F	HM	1	E6/A82.2	D6/A 82.2	--	--	PAINT DOOR AND FRAME TO MATCH WALL	
221B	(1)	3'-6"	7'-0"	1 3/4"	VD	F	HM	1	E6/A82.2	D6/A 82.2	--	--	PAINT DOOR AND FRAME TO MATCH WALL	

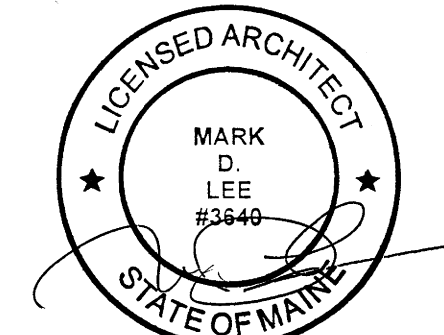


A3 DOOR TYPES  
SCALE: 1/4" = 1'-0"



A4 FRAME TYPES  
SCALE: 1/4" = 1'-0"

Issues and	
Date	Description
03-29-17	CONSTRUCTION DOCUMENTS



PA / PE: MDL  
Drawn By: MCM

© 2017  
Harriman Associates

FIRST FLOOR PLAN

A10.1