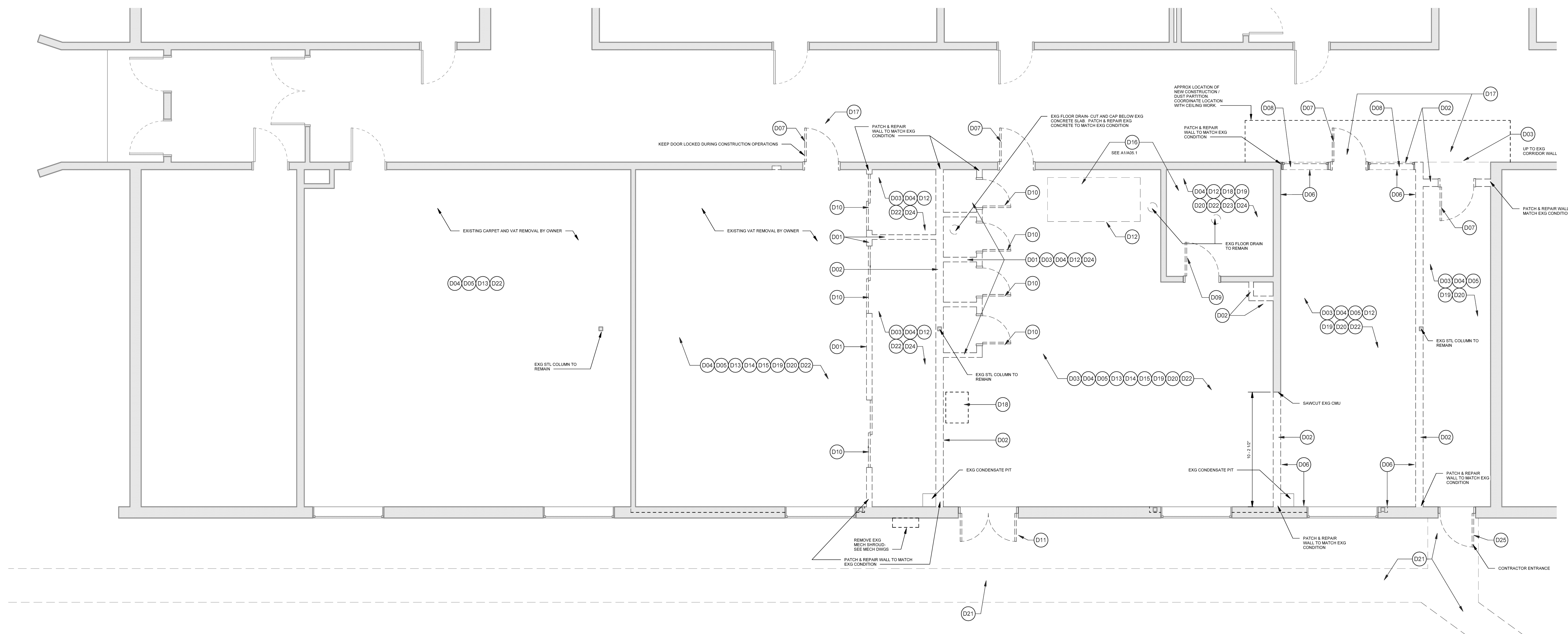




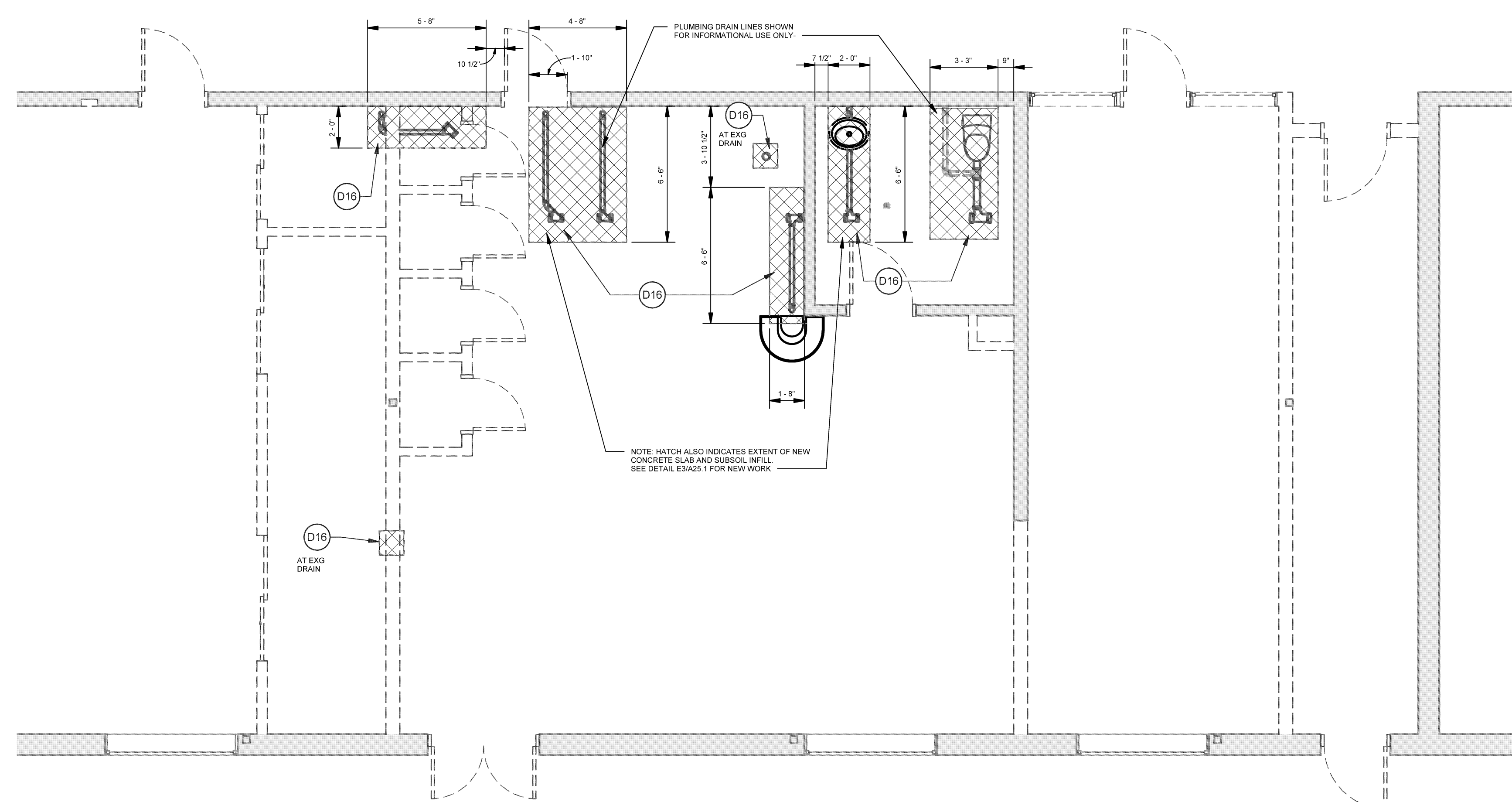
CENTRAL MAINE
COMMUNITY COLLEGE
ECE AREA RENOVATION

A schematic diagram of a building layout. A specific room is highlighted with a cross-hatched pattern. An arrow points from the text 'AREA OF WORK' to this highlighted room.

1. ALL DASHED LINES INDICATE EXISTING CONSTRUCTION TO BE REMOVED U.N.O.
2. COORDINATE WITH MECHANICAL, ELECTRICAL PLUMBING AND STRUCTURAL DRAWINGS FOR ALL ADDITIONAL REMOVALS. COORDINATE WITH M.E.P. CONTRACTOR.
3. COORDINATE WITH NEW FLOOR PLANS TO DETERMINE EXISTING REMOVALS IN REFERENCE TO NEW WORK.
5. FIELD VERIFY ALL CONDITIONS AND NOTIFY ARCHITECT OF ANY DEVIATION FROM THE DRAWINGS.
6. AT EXISTING MASONRY OPENINGS INFILL, REMOVE MASONRY BLOCK TO EXTENT REQUIRED FOR TOOTHING-IN NEW MASONRY BLOCK.
7. SAND AND PREP ALL EXISTING WALLS TO REMAIN THAT ARE INTENDED TO RECEIVE NEW PAINT FINISH.



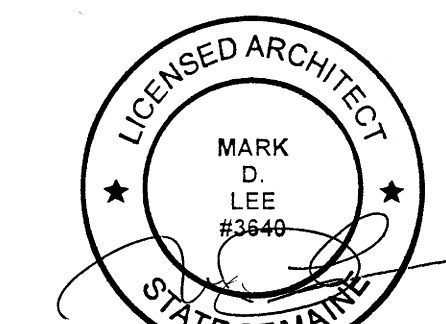
B1 **FIRST FLOOR DEMOLITION PLAN**
SCALE: 1/4" = 1'-0"



A1 ENLARGED SLAB CUT PLAN
SCALE: 1/4" = 1'-0"

CODE	DESCRIPTION
D01	REMOVE EXISTING GYP BD AND WOOD STUD WALL AS INDICATED. FULL HEIGHT UNLESS NOTED OTHERWISE.
D02	REMOVE EXISTING CMU WALL AS INDICATED. FULL HEIGHT UNLESS NOTED OTHERWISE. PATCH EX-GY CONCRETE SLAB TO PROVIDE SMOOTH FINISH FOR NEW WORK.
D03	REMOVE EXISTING VCT FLOORING AND ADHESIVE DOWN TO SUITABLE SUBSTRATE.
D04	REMOVE EXISTING RUBBER BASE MOLDING.
D05	REMOVE EXISTING SUSPENDED ACOUSTICAL TILE CEILING SYSTEM IN ITS ENTIRETY.
D06	REMOVE EXISTING WOOD PANEL DOWEL WALL PANELING DOWN TO SUITABLE SUBSTRATE, WHERE APPLICABLE.
D07	REMOVE EXISTING WOOD DOOR AND HOLLOW METAL FRAME SYSTEM IN ITS ENTIRETY.
D08	REMOVE EXISTING HOLLOW METAL BORROWED LIGHT SYSTEM.
D09	REMOVE EXISTING WOOD OR HOLLOW METAL DOOR. EXISTING HOLLOW METAL FRAME TO REMAIN.
D10	REMOVE EXISTING WOOD DOOR, WOOD FRAME AND WOOD TRIM IN ITS ENTIRETY.
D11	REMOVE EXISTING HOLLOW METAL DOOR, HOLLOW METAL FRAME AND METAL THRESHOLD IN ITS ENTIRETY.
D12	REMOVE EXISTING WOOD BUILT-IN OR WOOD SHELVING.
D13	REMOVE AND SALVAGE EXISTING MARKER BOARD OR TACK BOARD TO OWNER. PATCH AND REPAIR ANY HOLES IN WALL TO REMAINING IN THE EXISTING WALL TO MATCH EXISTING CONDITION.
D14	REMOVE AND SALVAGE EXISTING CEILING MOUNTED PROJECTOR TO OWNER.
D15	REMOVE AND SALVAGE EXISTING WALL MOUNTED PROJECTION SCREEN TO OWNER.
D16	REMOVE PORTION OF EX-GY CONCRETE SLAB AND SUBSOIL SYSTEM. COORDINATE WORK WITH PLUMBING DRAWINGS.
D17	REMOVE, SALVAGE AND MODIFY EXISTING SUSPENDED ACOUSTICAL CEILING SYSTEM IN ORDER TO INSTALL NEW WORK. RE-INSTALL TO MATCH EXISTING CONDITION. SEE NEW CEILING PLANS.
D18	REMOVE EXISTING PLUMBING ITEMS. SEE PLUMBING DRAWINGS FOR EXTENT.
D19	REMOVE EXISTING ELECTRICAL ITEMS. SEE ELECTRICAL DRAWINGS FOR EXTENT.
D20	REMOVE EXISTING MECHANICAL ITEMS. SEE MECHANICAL DRAWINGS FOR EXTENT.
D21	REMOVE EXISTING EXTERIOR SITE ITEMS. SEE CIVIL DRAWINGS FOR EXTENT.
D22	OWNER TO REMOVE, BUT NOT LIMIT, ANY LOOSE EQUIPMENT, FURNITURE, CLOCKS OR STORAGE ITEMS PRIOR TO DEMOLITION.
D23	REMOVE EXISTING PAINT FROM CONCRETE SLAB ON GRADE. PREP FOR NEW WORK.
D24	REMOVE EXISTING GYP BD CLG SYSTEM IN ITS ENTIRETY.
D25	REMOVE EXISTING HOLLOW METAL DOOR AND METAL THRESHOLD. HOLLOW METAL FRAME TO REMAIN.

Issues and Revisions	
Date	Description
03-29-17	CONSTRUCTION DOCUMENTS



PA / PE: MDL	© 2017 Harriman Associates
Drawn By: MCM	

FIRST FLOOR
DEMOLITION PLAN

A05.1